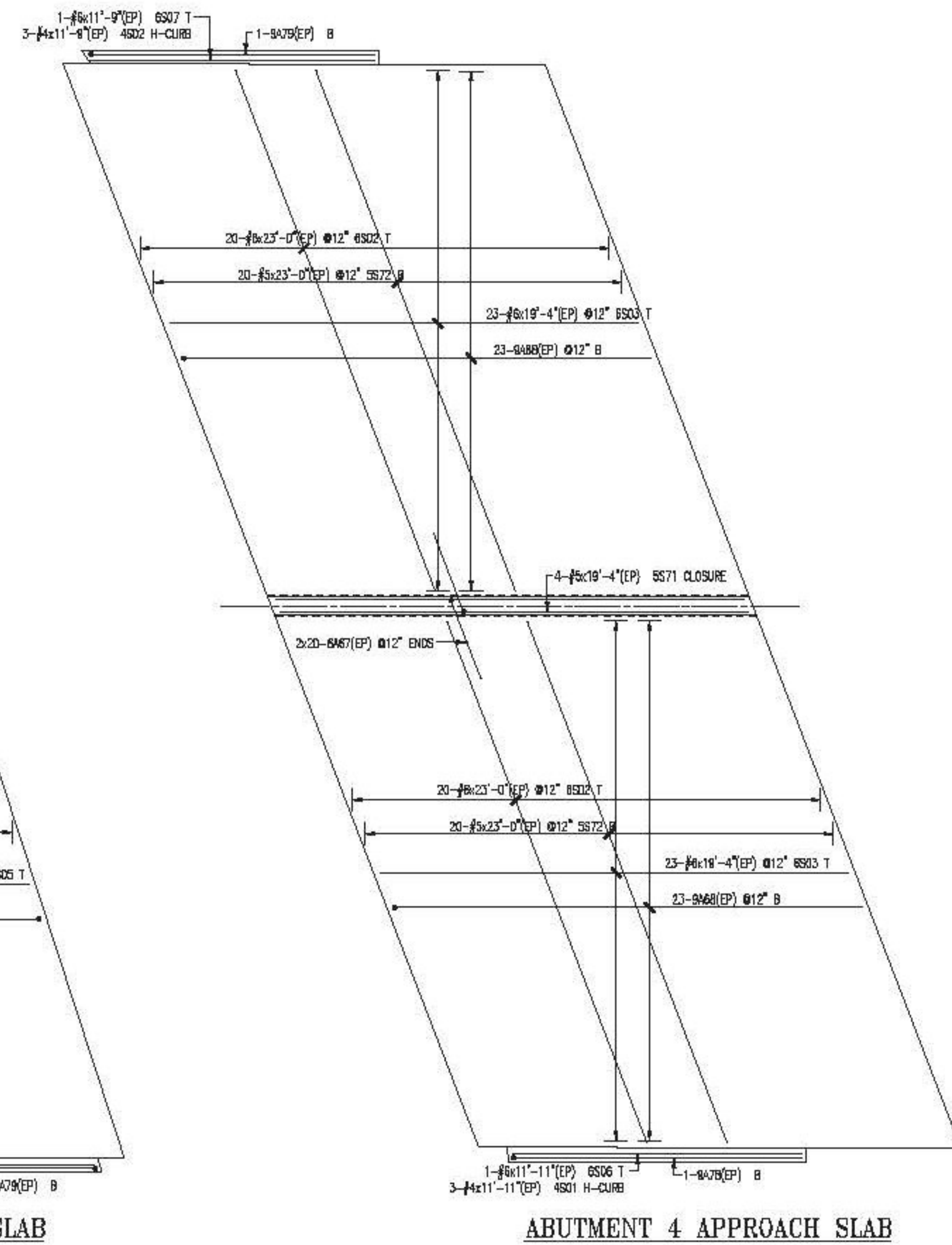
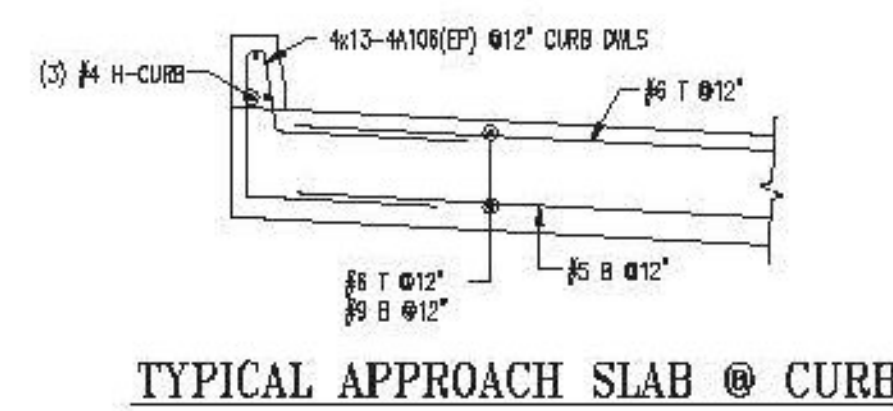


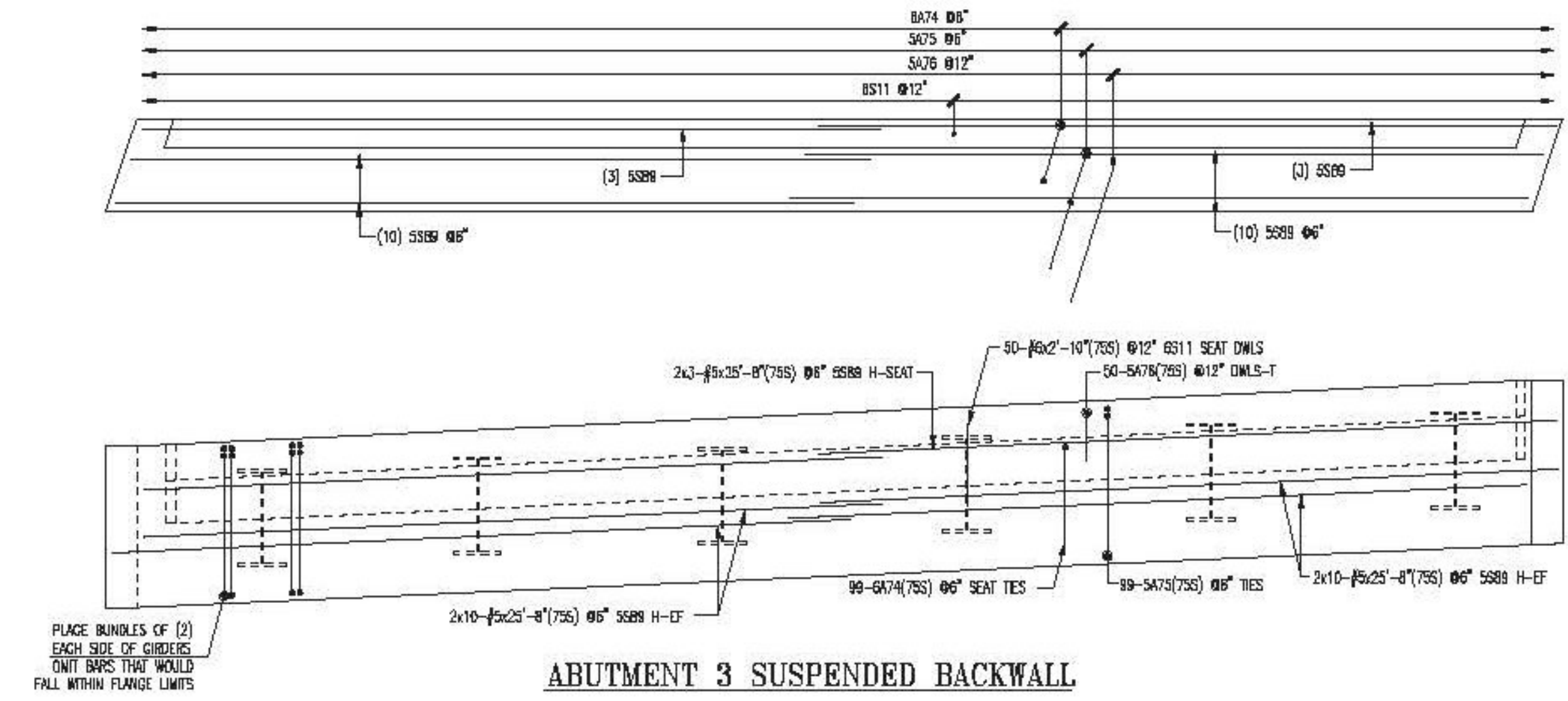
ABUTMENT 3 APPROACH SLAB



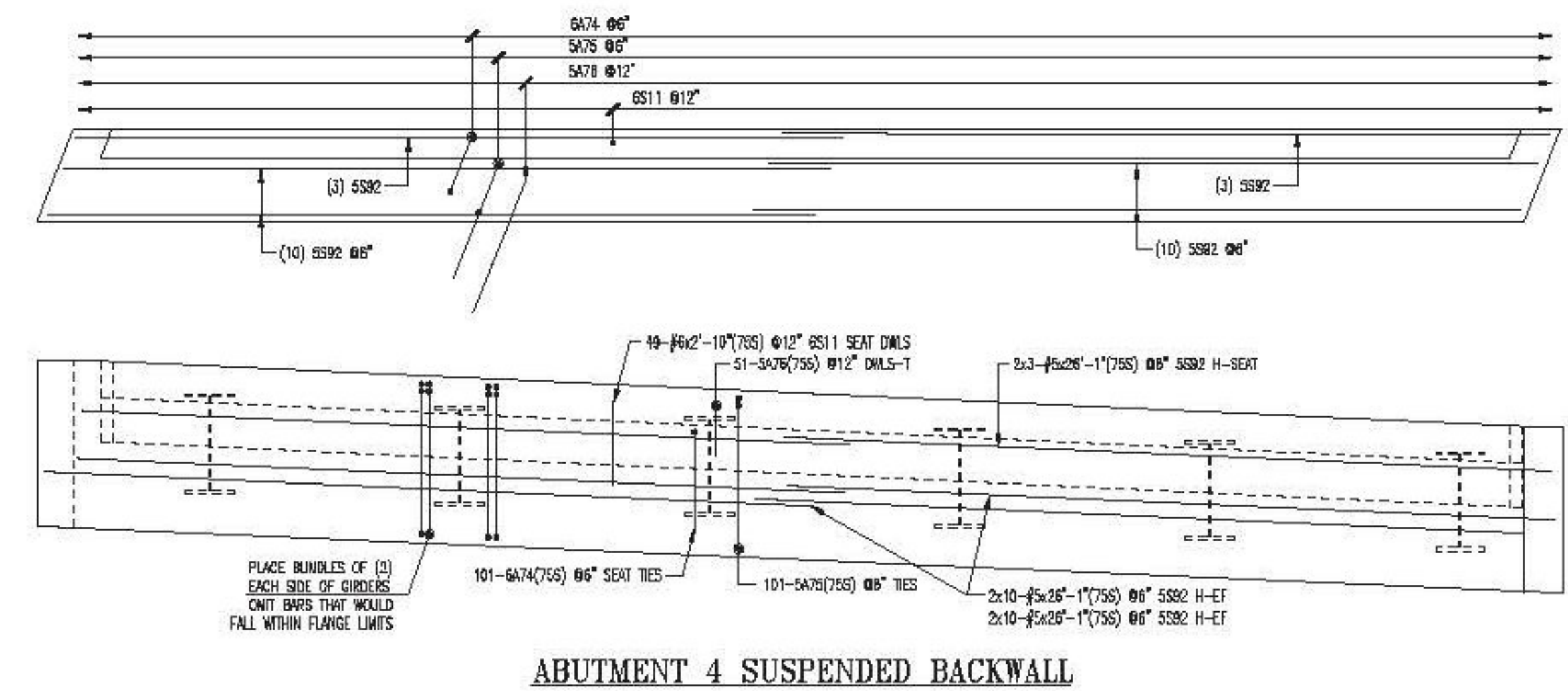
ABUTMENT 4 APPROACH SLAB



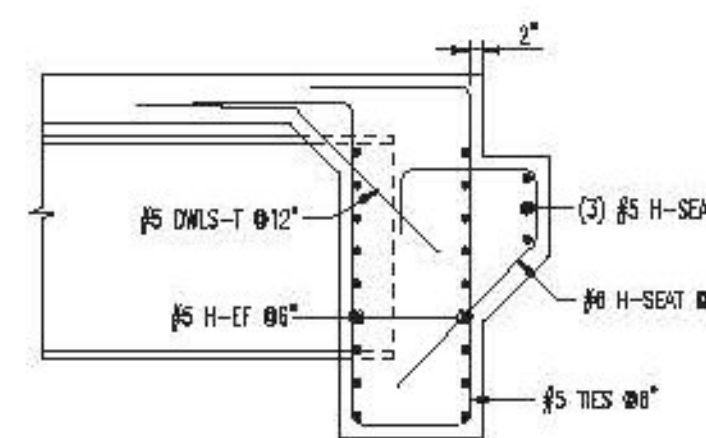
TYPICAL APPROACH SLAB @ CURB



ABUTMENT 3 SUSPENDED BACKWALL



ABUTMENT 4 SUSPENDED BACKWALL



TYPICAL SUSPENDED BACKWALL SECTION

SEE SHEET P015 FOR BAR LISTS
3" CUR CORNER LUGS.

LAP CHART-U.N.O.	
SIZE	OTHER BARS
#11	
#10	
#9	
#8	
#7	
#6	
#5	
#4	
#3	

* Top bars are bolted base with max
than 12" on concrete cast below the base

Vermont Agency of Transportation
RECEIVED
CK'D BY RK/GL OK'D BY WL
March 9, 2015
RESUBMIT NO Approved
BY KH DATE 3-12-2015

ALL MATERIAL ON THIS DRAWING NOTED AS (75S) SHALL BE ASTM A955 STAINLESS STEEL

ALL MATERIAL ON THIS DRAWING NOTED AS (EP) SHALL BE ASTM A1065 GR60 "DUAL COATED" REINF.

No.	Description	Date	By
2	FINAL APPROVAL PRINT	03/06/15	DPS
1	APPROVAL PRINT	02/16/15	CPS

Revisions and Issue Record

The full intent and purpose of this drawing is the placing of reinforcing steel bars ONLY. It is NOT to be used as a means of communication between the Architect, Engineer, Contractor or any other Sub-trades.

THIS DRAWING IS NOT TO BE SCALED.

HarrisRebar CANAAN, NEW HAMPSHIRE
National Strength. Local Service.

Project: HARTFORD LATERAL BRIDGE I-91 NORTHBOUND
Drawing: APPROACH SLABS AND BACKWALLS REINF.
Customer: PCL CIVIL CONSTRUCTORS
Engineer: G. LAROCHE

Refer to Release:

Date	Drawn	Chkd.	JOB No.	Dwg. No.
02/10/15	CPS		33505535	R05N

W:\esomple\Projects\33505535\Placing Drawings\DWGs\ROUTN.dwg