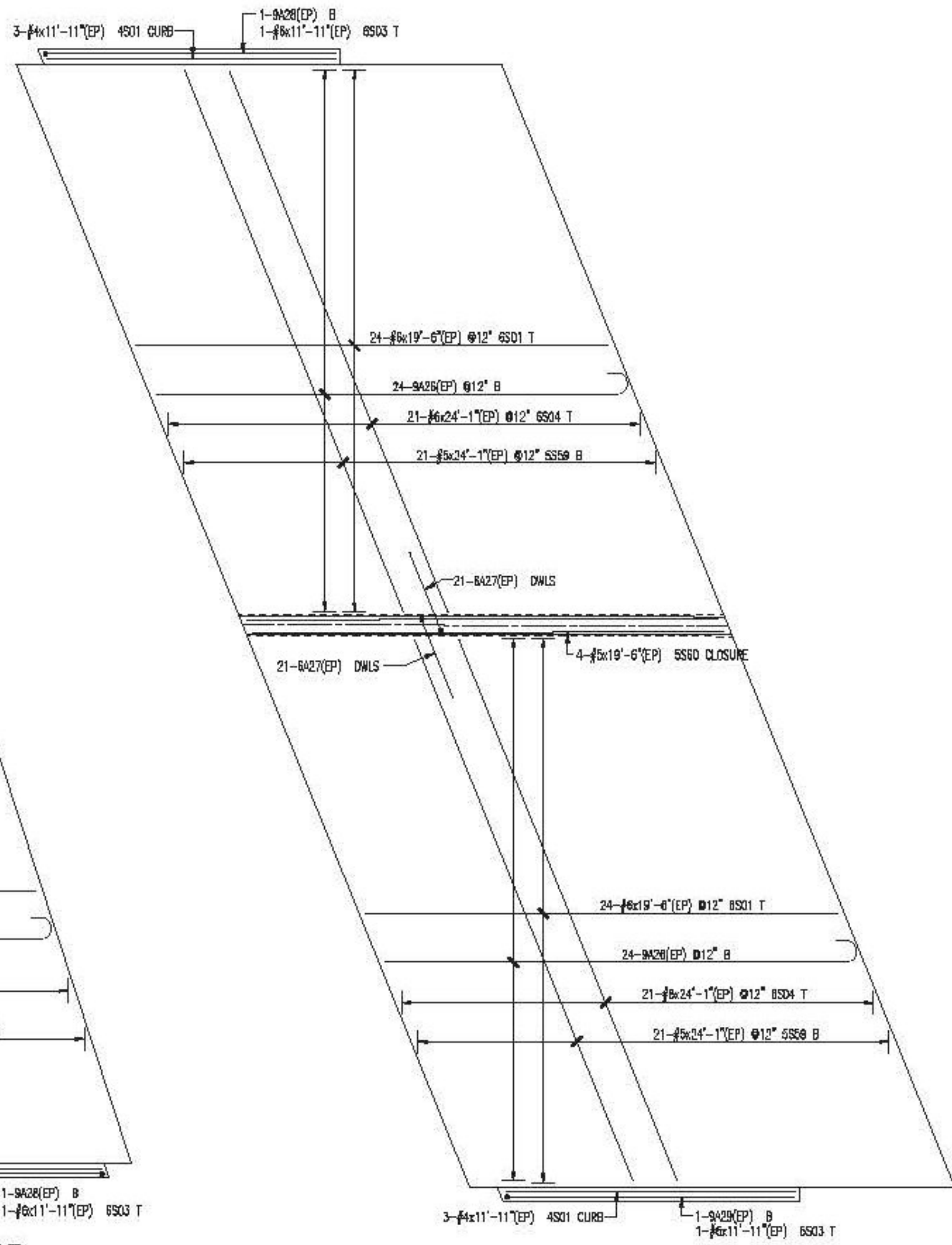
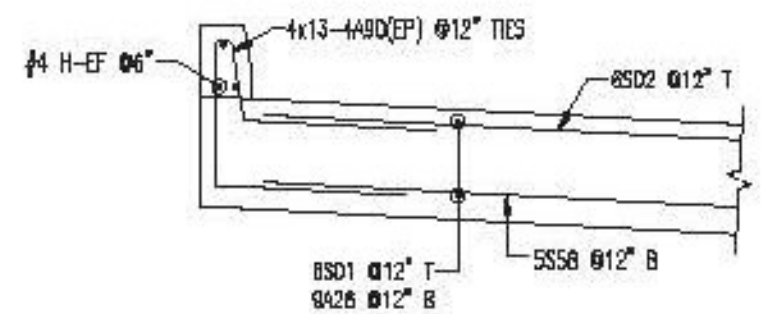


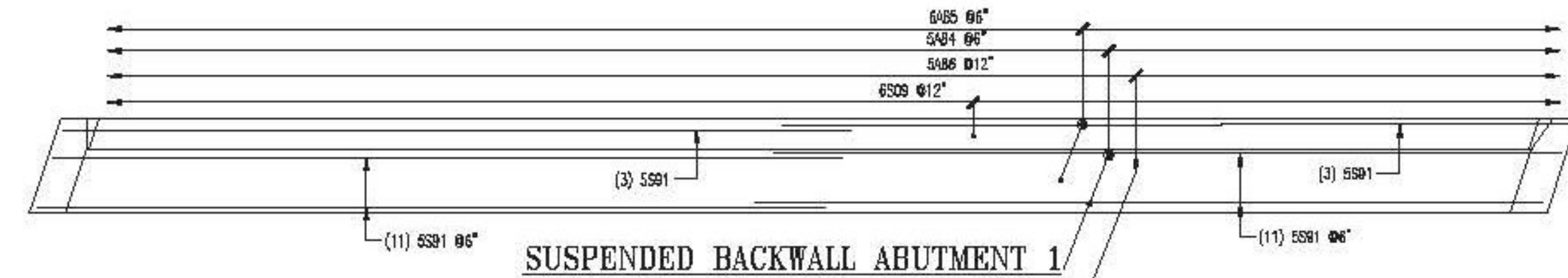
ABUTMENT 1 APPROACH SLAB



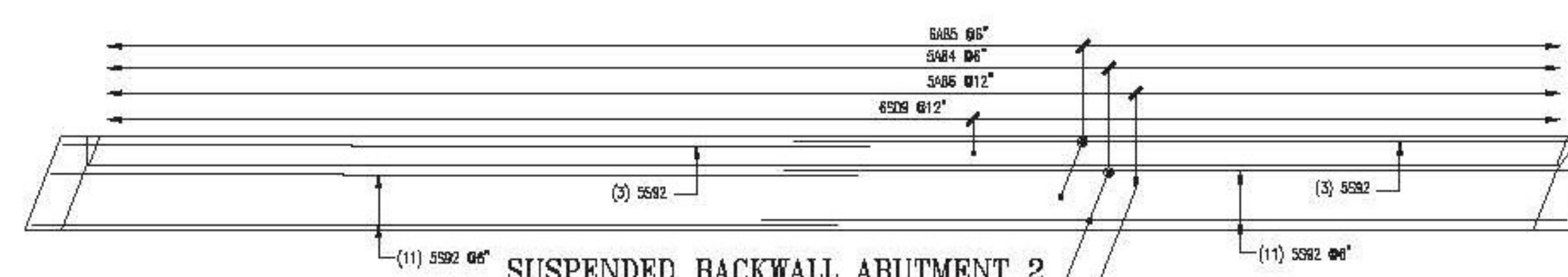
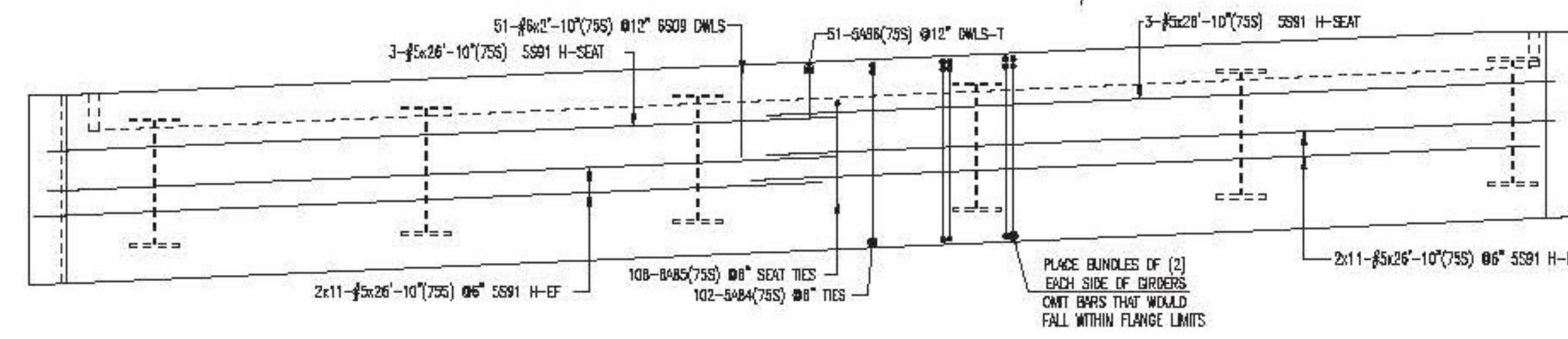
ABUTMENT 2 APPROACH SLAB



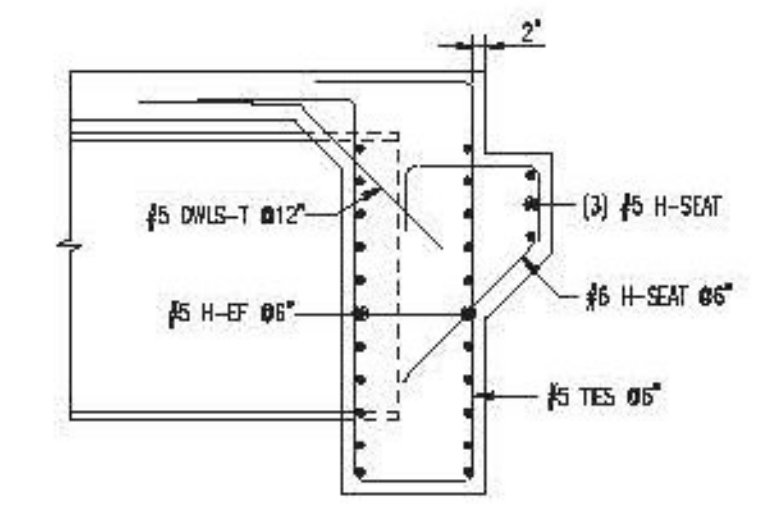
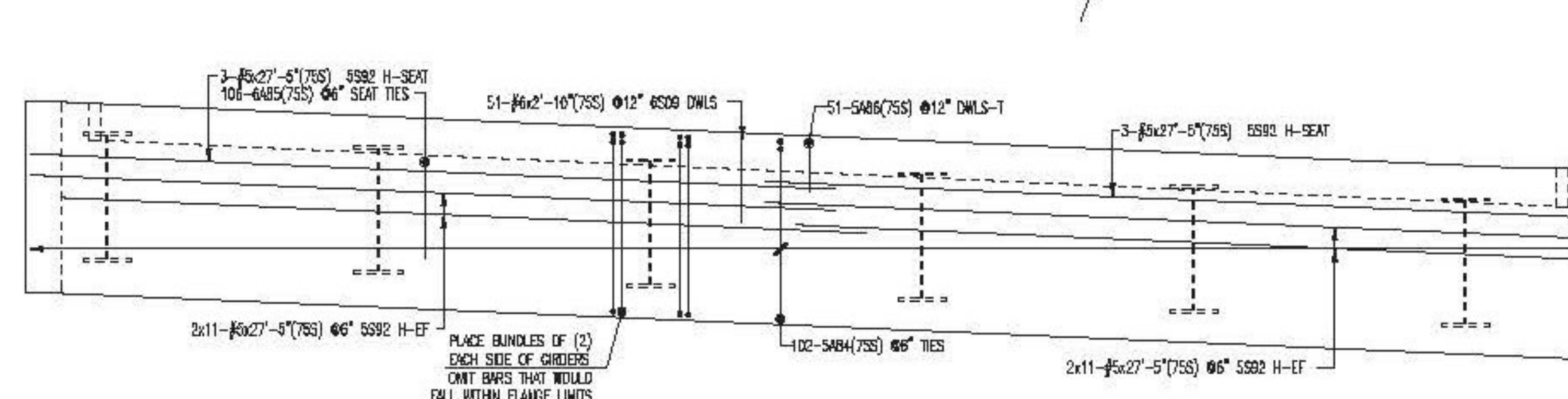
TYPICAL APPROACH SLAB @ CURB



SUSPENDED BACKWALL ABUTMENT 1



SUSPENDED BACKWALL ABUTMENT 2



TYPICAL SUSPENDED BACKWALL SECTION

ALL MATERIAL NOTED AS (75S) SHALL BE "ASTM A955" STAINLESS STEEL

ALL MATERIAL NOTED AS "EP" SHALL BE ASTM A1055 GRADE 60 "DUAL COATED"

SEE SHEET REFS FOR BAR LISTS
3" CLR COVER U.N.O.

| SIZE | TOP BARS | OTHER BARS |
|------|----------|------------|
| #11 | | |
| #10 | | |
| #9 | | |
| #8 | 3" | 3" |
| #7 | 3" | 3" |
| #6 | 3" | 3" |
| #5 | 3" | 3" |
| #4 | 3" | 3" |
| #3 | | |

* Top bars are 10" to bars with more than 12" in concrete cast below the bars.

Vermont Agency of Transportation
RECEIVED
CK'D BY RKGL OK'D BY WL
March 9, 2015
RESUBMIT NO Approved
BY KH DATE 3-12-2015

| No. | Description | Date | By |
|-----|----------------------|----------|-----|
| 2 | FINAL APPROVAL PRINT | 03/06/15 | DPS |
| 1 | APPROVAL PRINT | 02/13/15 | DPS |

Revisions and Issue Record

The full intent and purpose of this drawing is the placing of reinforcing steel bars ONLY. It is NOT to be used as a means of communication between the Architect, Engineer, Contractor or any other Sub-trades.

THIS DRAWING IS NOT TO BE SCALED.

HarrisRebar
Rebar Steel
National Strength. Local Service.

DETAILED AT:
CANAN
NEW HAMPSHIRE

Project: BRIDGE 43 S REPLACEMENT
I-91 HARTFORD VT

Drawing: I-91 SOUTHBOUND APPROACH SLABS
AND SUSPENDED BACKWALLS

Customer: PCL CIVIL CONSTRUCTORS
Engineer: G LAROCHE

Refer to Release:

| Date | Drawn | Chkd. | JOB No. | Dwg. No. |
|----------|-------|-------|----------|----------|
| 02/09/15 | CPS | | 33505535 | R055 |

W:\esomple\Projects\33505535\Placing Drawings\DWGs\R015.dwg