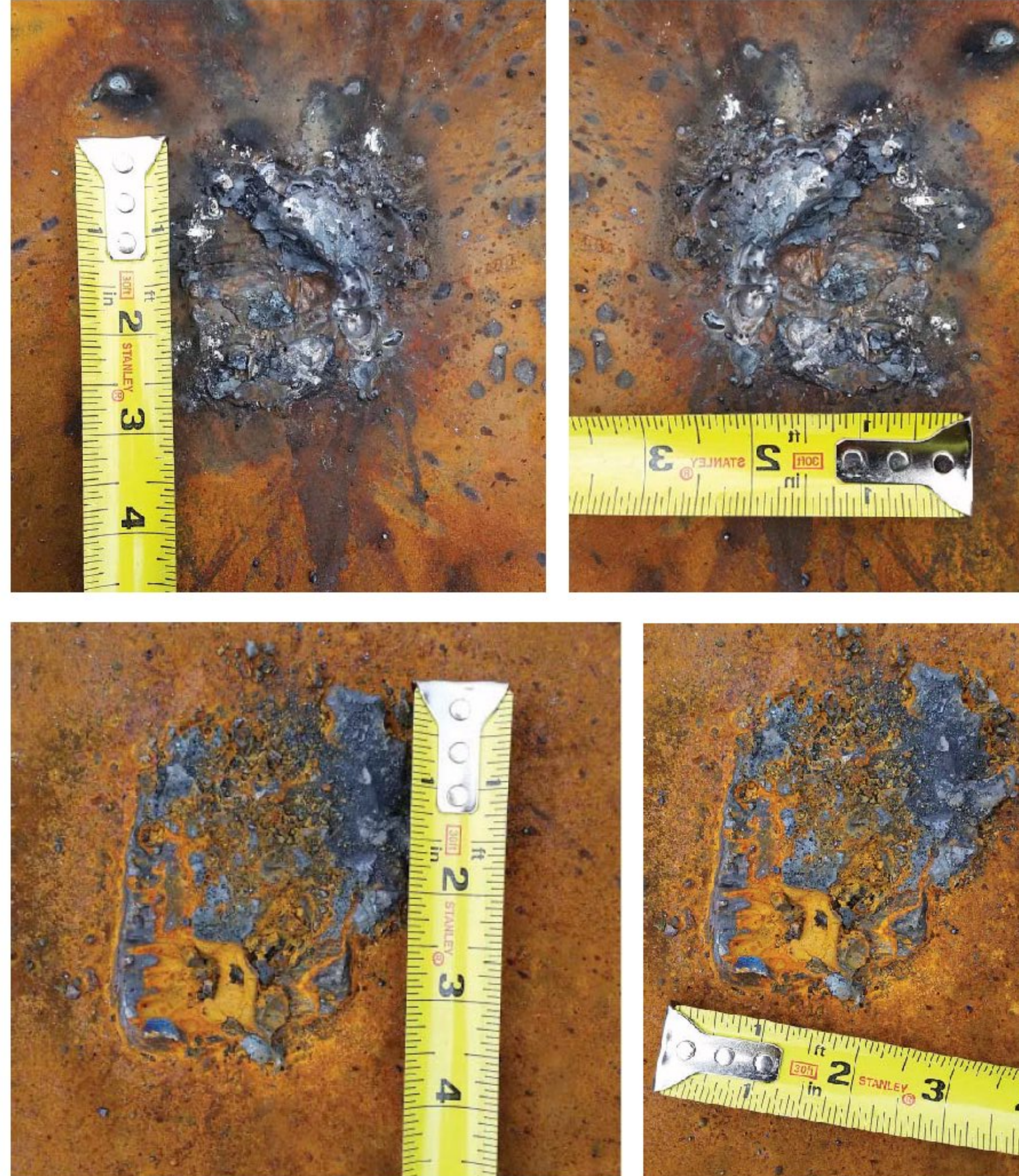


Structural Steel Repair Procedure

During inspection it was discovered that (2) small areas on I-91NB girder #6 were cut into with a torch. See pictures below for reference:



This happened when the welder cut and moved one of the legs for the fall protection. The welder has since been talked to as has the crew. If cutting of any temporary members is required grinders (not torches) are to be used. In no situation shall the permanent girders be damaged.

PCL proposes the following repair procedure:

1. Grind off all latent materials
2. Fill divots with weld (E70XX)
3. Grind area to be flush with flange

Vermont Agency of Transportation
RECEIVED
CK'D BY JC OK'D BY JS
June 24, 2015
RESUBMIT NO Approved
BY JS DATE 6-25-2015