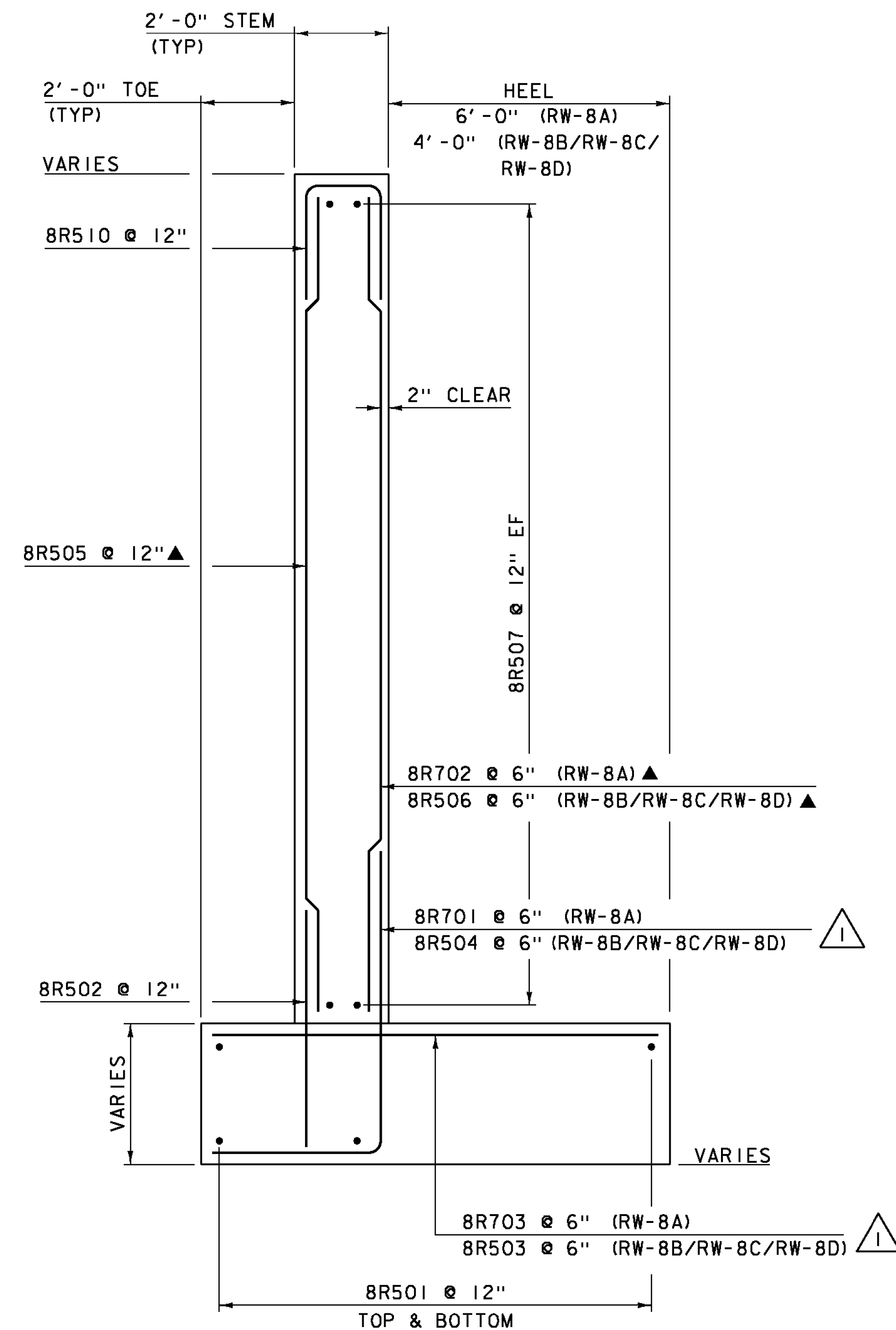


RETAINING WALL #8 ELEVATION

SCALE 1/2" = 1'-0"



RETAINING WALL #8 TYPICAL

SCALE 1/2" = 1'-0"

NOTE:

- NF = NEAR FACE
- FF = FAR FACE
- EF = EACH FACE
- ▲ = CUT TO FIT IN FIELD
- 3" CLEAR, UNLESS OTHERWISE SPECIFIED ON THE PLANS.
- 2'-2" LAP FOR #5 BAR
- 2'-7" LAP FOR #6 BAR
- 3'-5" LAP FOR #7 BAR
- 4'-6" LAP FOR #8 BAR

REVISION	DATE	DESCRIPTION	BY
1	03-05-2015	BAR CHANGES PER DESIGN	JS

PROJECT NAME: HARTFORD	PLOT DATE: 05-MAR-2015
PROJECT NUMBER: IM 091-2(79)	DRAWN BY: J. SALVATORI
FILE NAME: s120132retwall.dgn	CHECKED BY: J. GRIGAS
DESIGNED BY: G. LAROCHE	SHEET 124R OF 166
RETAINING WALL #8	