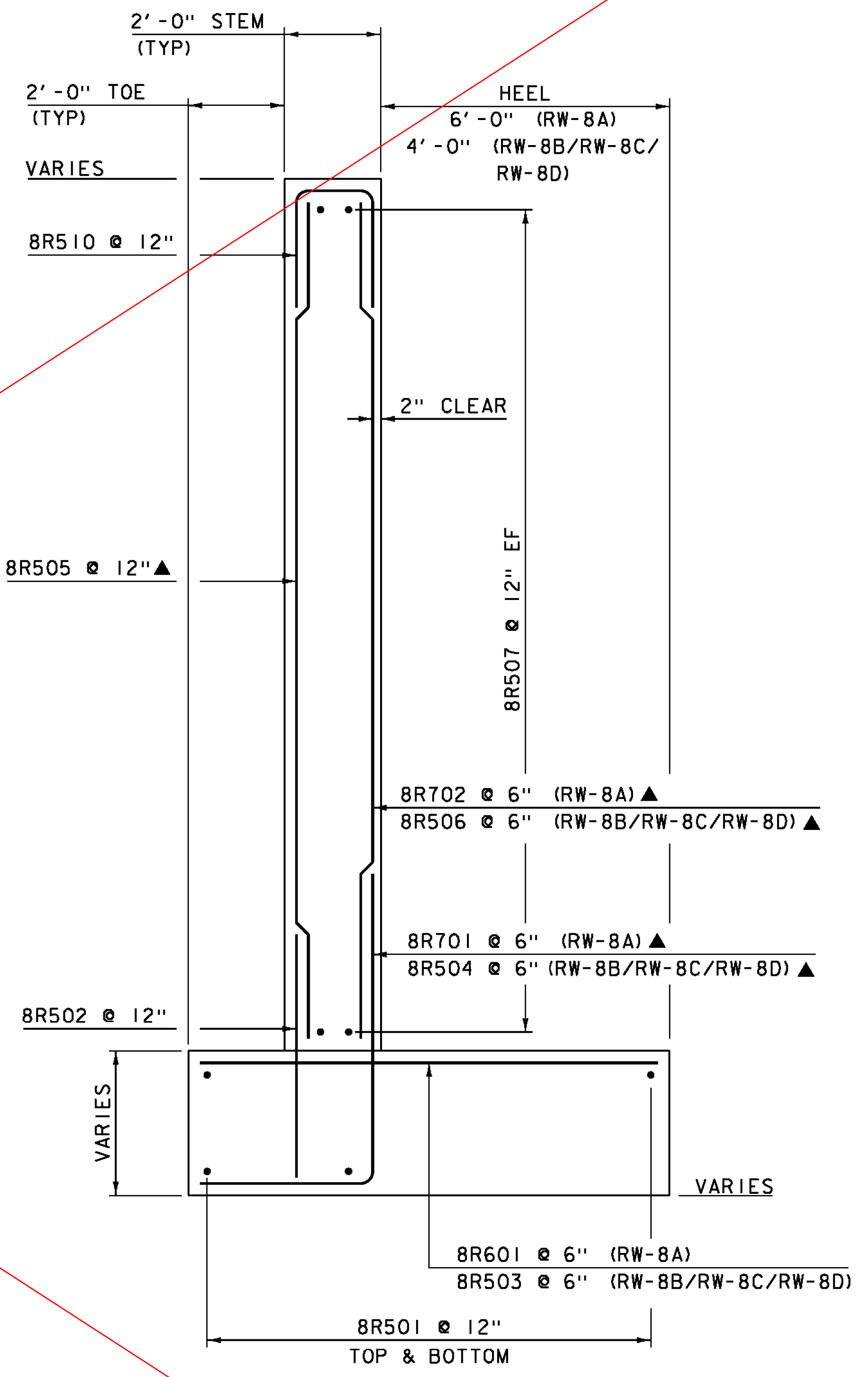


RETAINING WALL #8 ELEVATION
SCALE 1/2" = 1'-0"



RETAINING WALL #8 TYPICAL
SCALE 1/2" = 1'-0"

SEE SHEET 124-R

NOTE:
 NF = NEAR FACE
 FF = FAR FACE
 EF = EACH FACE
 ▲ = CUT TO FIT IN FIELD
 3" CLEAR, UNLESS OTHERWISE SPECIFIED ON THE PLANS.
 2'-2" LAP FOR #5 BAR
 2'-7" LAP FOR #6 BAR
 3'-5" LAP FOR #7 BAR
 4'-6" LAP FOR #8 BAR

PROJECT NAME: HARTFORD	PLOT DATE: 15-DEC-2014
PROJECT NUMBER: IM 091-2(79)	DRAWN BY: J. SALVATORI
FILE NAME: s120132retwall.dgn	CHECKED BY: J. GRIGAS
PROJECT LEADER: K. HIGGINS	SHEET 124 OF 166
DESIGNED BY: G. LAROCHE	
RETAINING WALL #8	