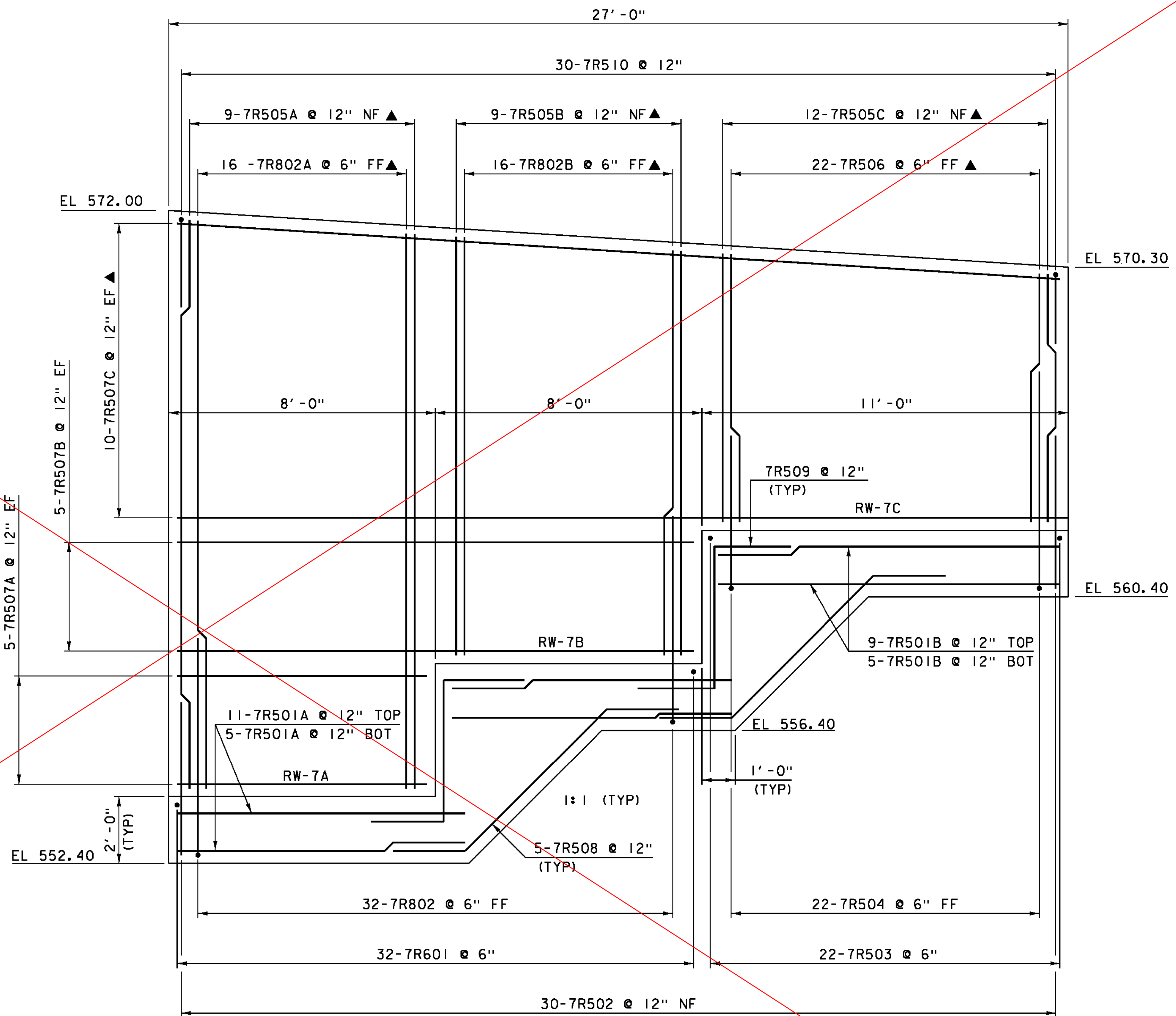


**RETAINING WALL #7 TYPICAL**

SCALE 1/2" = 1'-0"



**RETAINING WALL #7 ELEVATION**

SCALE 1/2" = 1'-0"

**NOTE:**

- NF = NEAR FACE
- FF = FAR FACE
- EF = EACH FACE
- ▲ = CUT TO FIT IN FIELD
- 3" CLEAR, UNLESS OTHERWISE SPECIFIED ON THE PLANS.
- 2'-2" LAP FOR #5 BAR
- 2'-7" LAP FOR #6 BAR
- 3'-5" LAP FOR #7 BAR
- 4'-6" LAP FOR #8 BAR

SEE SHEET 123-R

PROJECT NAME: HARTFORD	PLOT DATE: 15-DEC-2014
PROJECT NUMBER: IM 091-2(79)	DRAWN BY: J. SALVATORI
FILE NAME: s120132retwall.dgn	CHECKED BY: J. GRIGAS
PROJECT LEADER: K. HIGGINS	SHEET 123 OF 166
DESIGNED BY: G. LAROCHE	
RETAINING WALL #7	