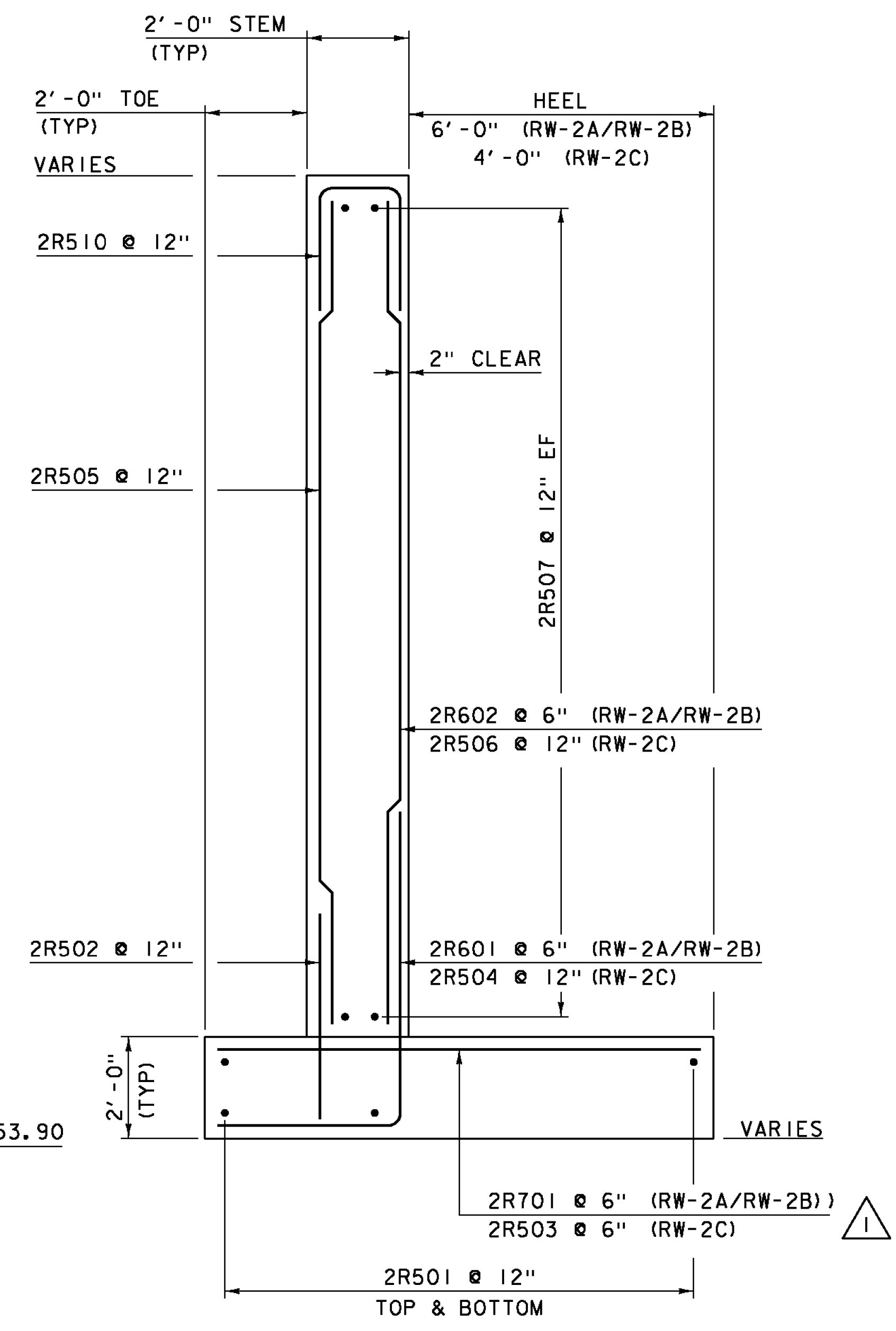


RETAINING WALL #2 ELEVATION
SCALE 1/2" = 1'-0"



RETAINING WALL #2 TYPICAL
SCALE 1/2" = 1'-0"

NOTE:
 NF = NEAR FACE
 FF = FAR FACE
 EF = EACH FACE
 ▲ = CUT TO FIT IN FIELD
 3" CLEAR, UNLESS OTHERWISE SPECIFIED ON THE PLANS.
 2'-2" LAP FOR #5 BAR
 2'-7" LAP FOR #6 BAR
 3'-5" LAP FOR #7 BAR
 4'-6" LAP FOR #8 BAR

| REVISION | DATE | DESCRIPTION | BY |
|----------|------------|--|----|
| 1 | 03-02-2015 | UPDATED SPACING AND NUMBER OF 2R503 BARS | JS |
| 2 | 04-28-2015 | REVISED END ELEVATION | JS |

| | |
|-------------------------------|-------------------------|
| PROJECT NAME: HARTFORD | PLOT DATE: 28-APR-2015 |
| PROJECT NUMBER: IM 091-2(79) | DRAWN BY: J. SALVATORI |
| FILE NAME: s120132retwall.dgn | DESIGNED BY: G. LAROCHE |
| RETAINING WALL #2 | CHECKED BY: J. GRIGAS |
| | SHEET 118 OF 166 |