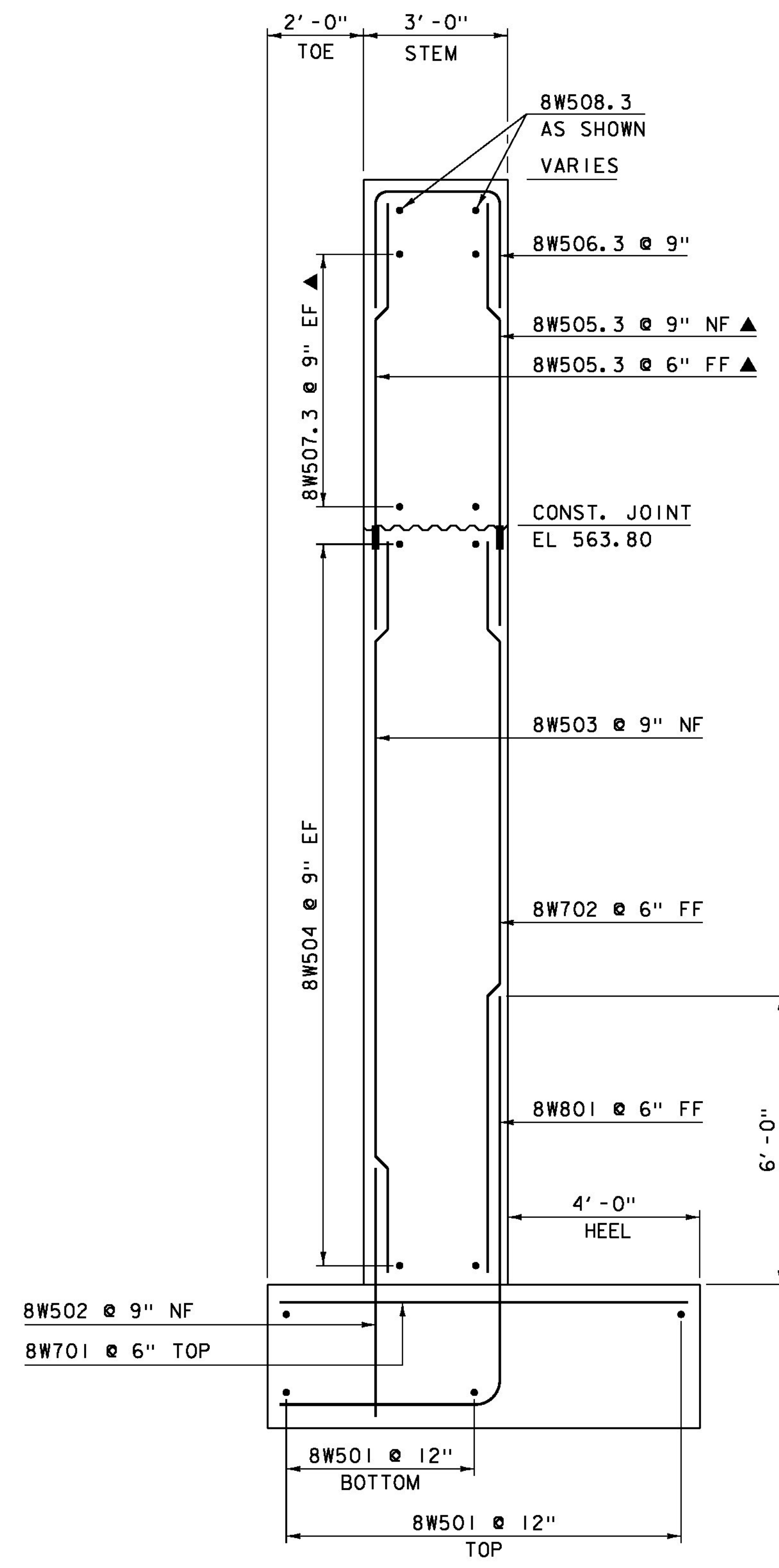


WINGWALL 8 ELEVATION
 SCALE: 1/2" = 1'-0"



WINGWALL 8 TYPICAL
 SCALE: 1/2" = 1'-0"

NOTE:
 NF = NEAR FACE
 FF = FAR FACE
 EF = EACH FACE
 ▲ = CUT TO FIT IN FIELD
 ■ = MECHANICAL CONNECTOR
 3" CLEAR, UNLESS OTHERWISE
 SPECIFIED ON THE PLANS.
 2'-2" LAP FOR #5 BAR
 2'-7" LAP FOR #6 BAR
 3'-5" LAP FOR #7 BAR
 4'-6" LAP FOR #8 BAR

PROJECT NAME:	HARTFORD	PLOT DATE:	15-DEC-2014
PROJECT NUMBER:	IM 091-2(79)	DRAWN BY:	J. SALVATORI
FILE NAME:	sl2a132sub_ab4	CHECKED BY:	G. LAROCHE
PROJECT LEADER:	K. HIGGINS	SHEET	116 OF 166
DESIGNED BY:	G. LAROCHE	WINGWALL 8 DETAILS	