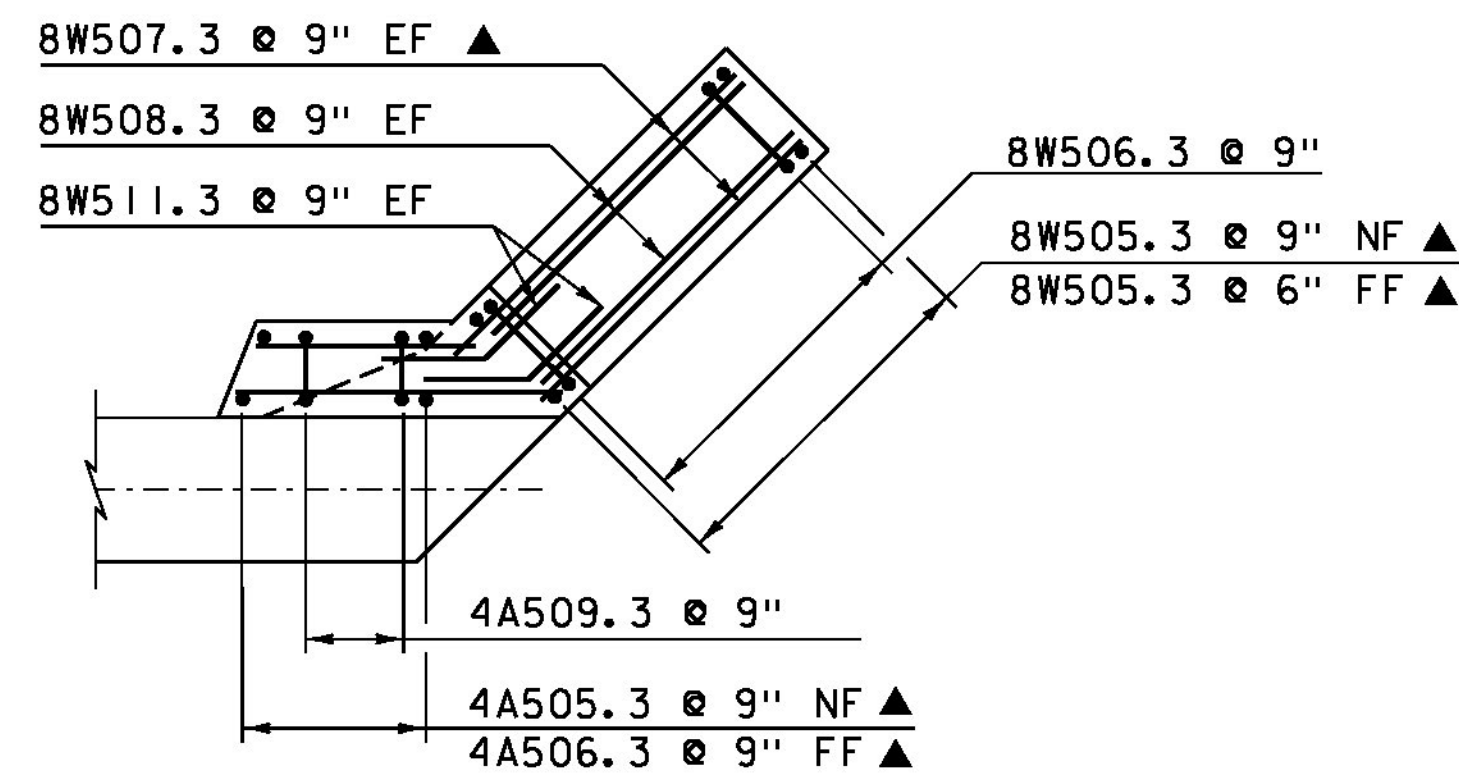


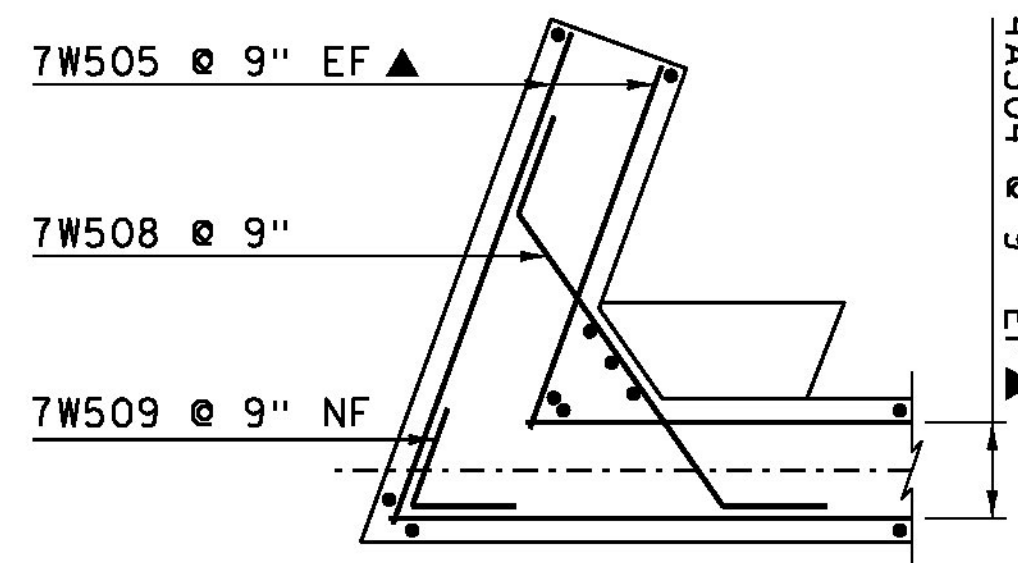
**WINGWALL 7 CORNER DETAIL  
ABOVE BRIDGE SEAT**

SCALE: 1/4" = 1'-0"



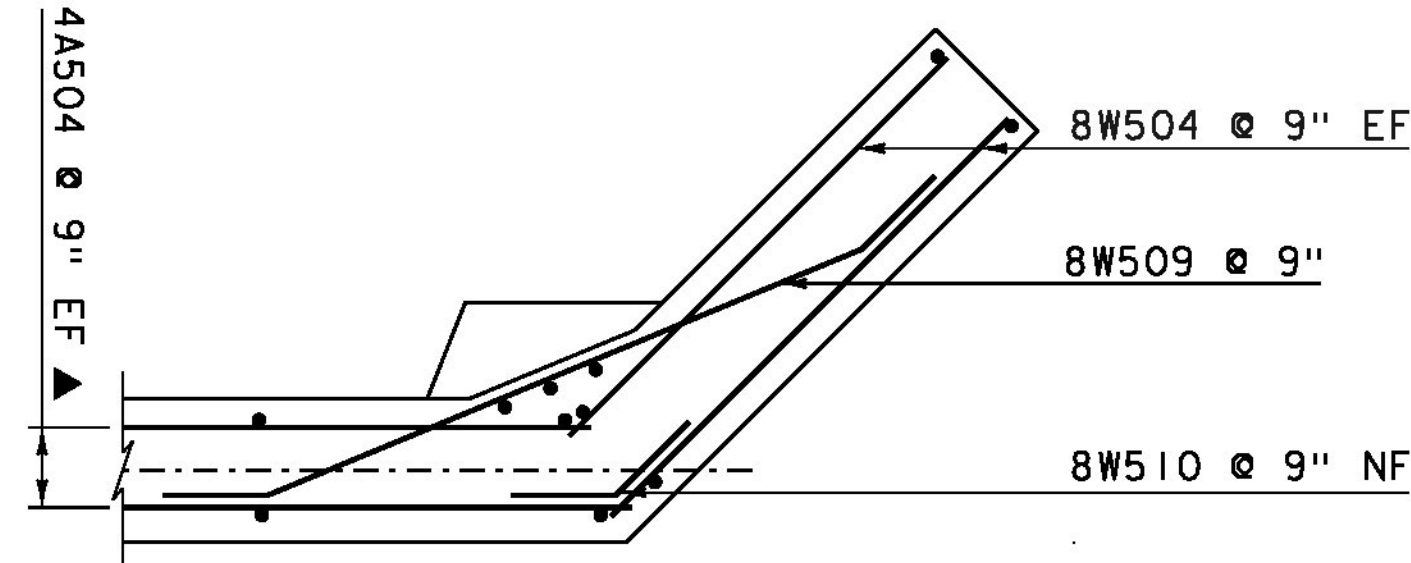
**WINGWALL 8 CORNER DETAIL  
ABOVE BRIDGE SEAT**

SCALE: 1/4" = 1'-0"



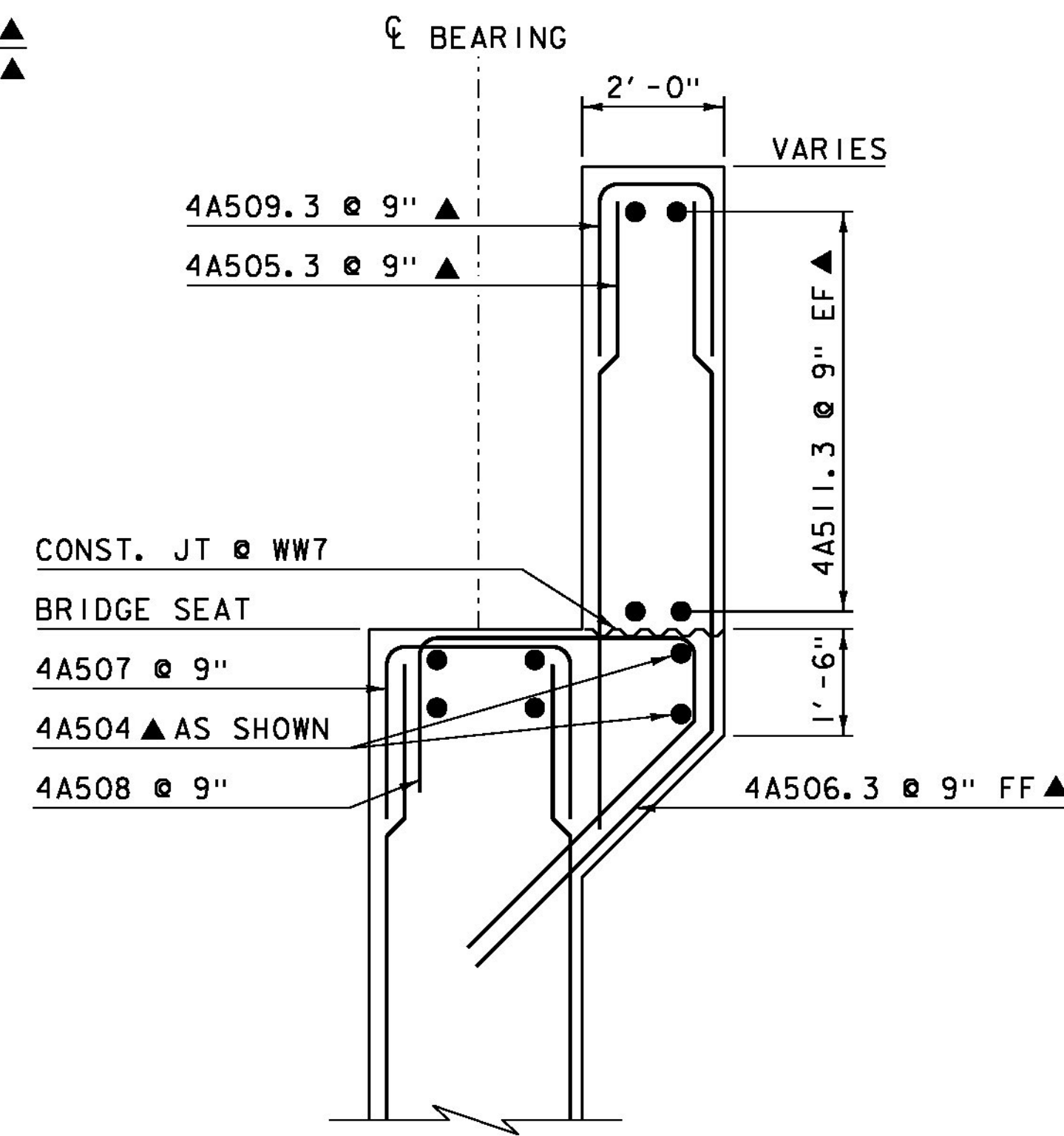
**WINGWALL 7 CORNER DETAIL  
BELOW BRIDGE SEAT**

SCALE: 1/4" = 1'-0"



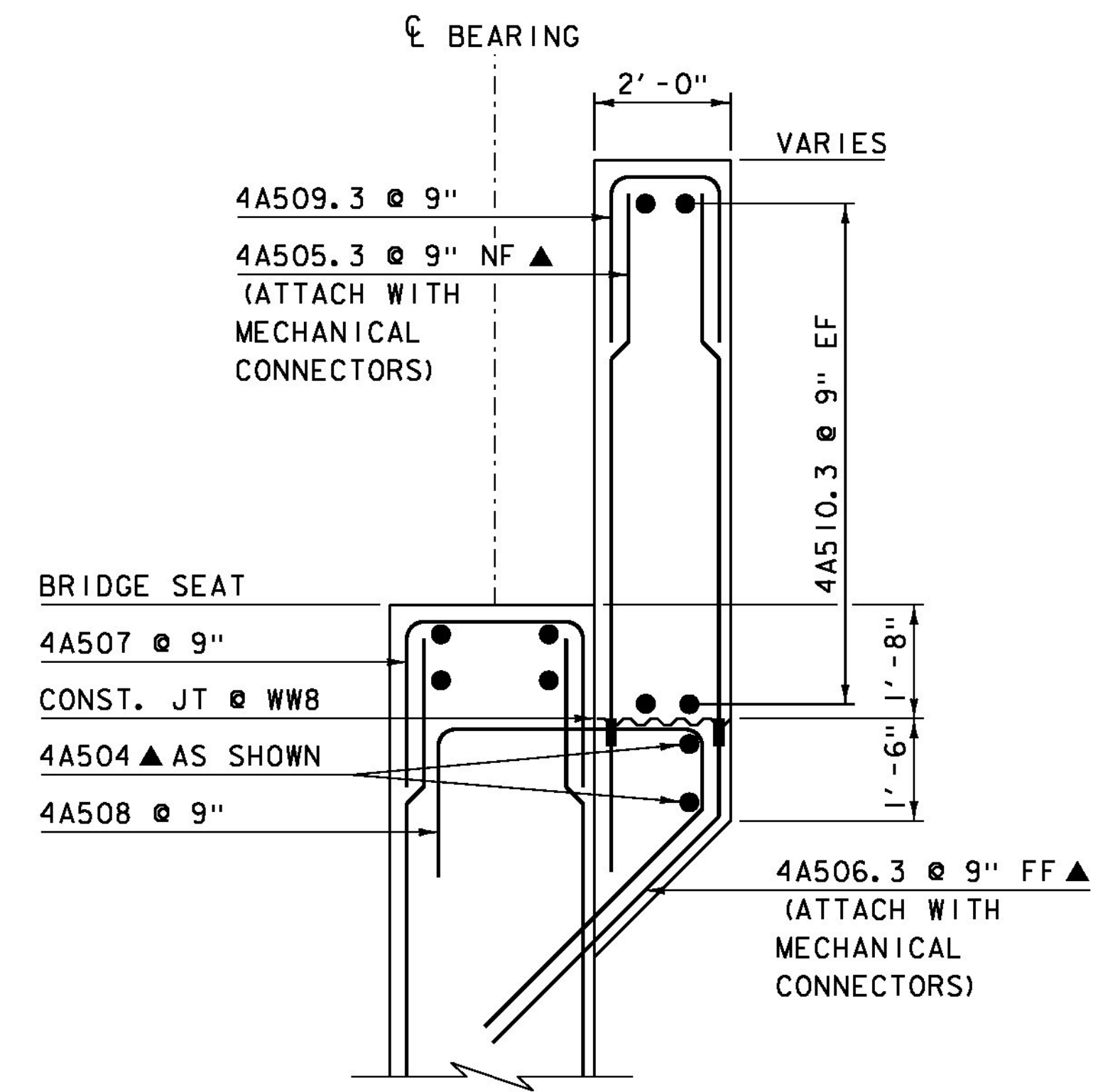
**WINGWALL 8 CORNER DETAIL  
BELOW BRIDGE SEAT**

SCALE: 1/4" = 1'-0"



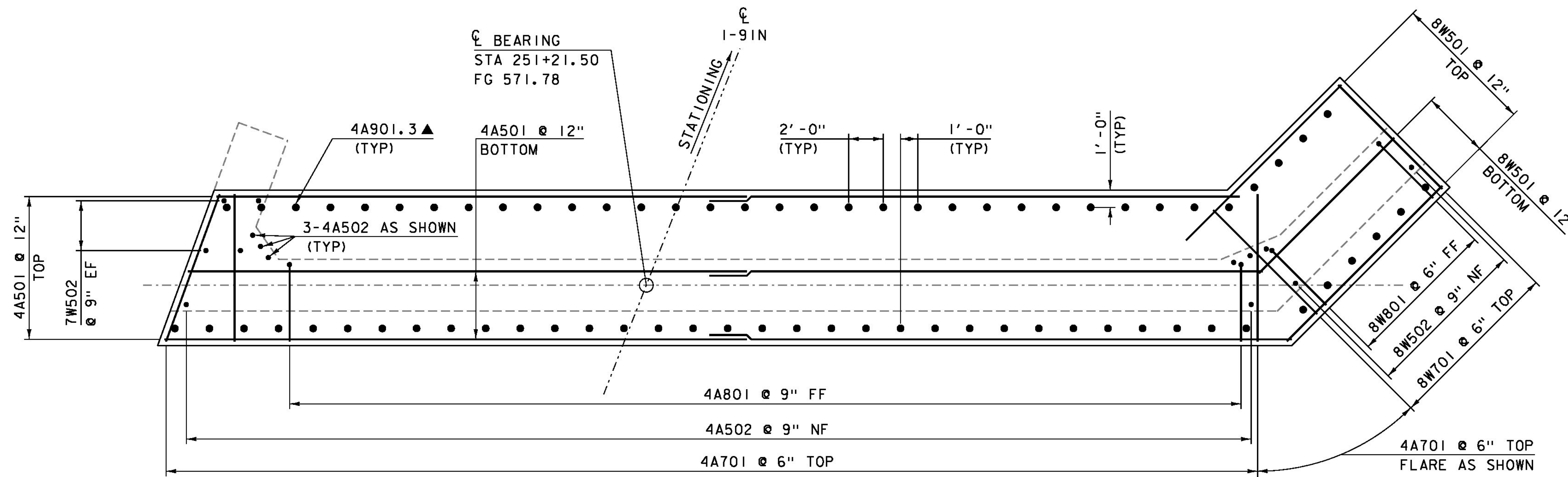
**ABUTMENT 4 CHEEK WALL  
REINFORCING @ WW 7**

SCALE: 1/4" = 1'-0"



**ABUTMENT 4 CHEEK WALL  
REINFORCING @ WW 8**

SCALE: 1/4" = 1'-0"



**ABUTMENT 4  
FOOTING PLAN**

SCALE: 1/4" = 1'-0"

**NOTE:**

- NF = NEAR FACE
- FF = FAR FACE
- EF = EACH FACE
- ▲ = CUT TO FIT IN FIELD
- = MECHANICAL CONNECTOR
- 3" CLEAR, UNLESS OTHERWISE SPECIFIED ON THE PLANS.
- 2'-2" LAP FOR #5 BAR
- 2'-7" LAP FOR #6 BAR
- 3'-5" LAP FOR #7 BAR
- 4'-6" LAP FOR #8 BAR

PROJECT NAME: HARTFORD  
PROJECT NUMBER: IM 091-2(79)

FILE NAME: s12a132sub\_ab4  
PROJECT LEADER: K. HIGGINS  
DESIGNED BY: G. LAROCHE  
ABUTMENT 4 FOOTING

PLOT DATE: 15-DEC-2014  
DRAWN BY: J. SALVATORI  
CHECKED BY: G. LAROCHE  
SHEET 114 OF 166