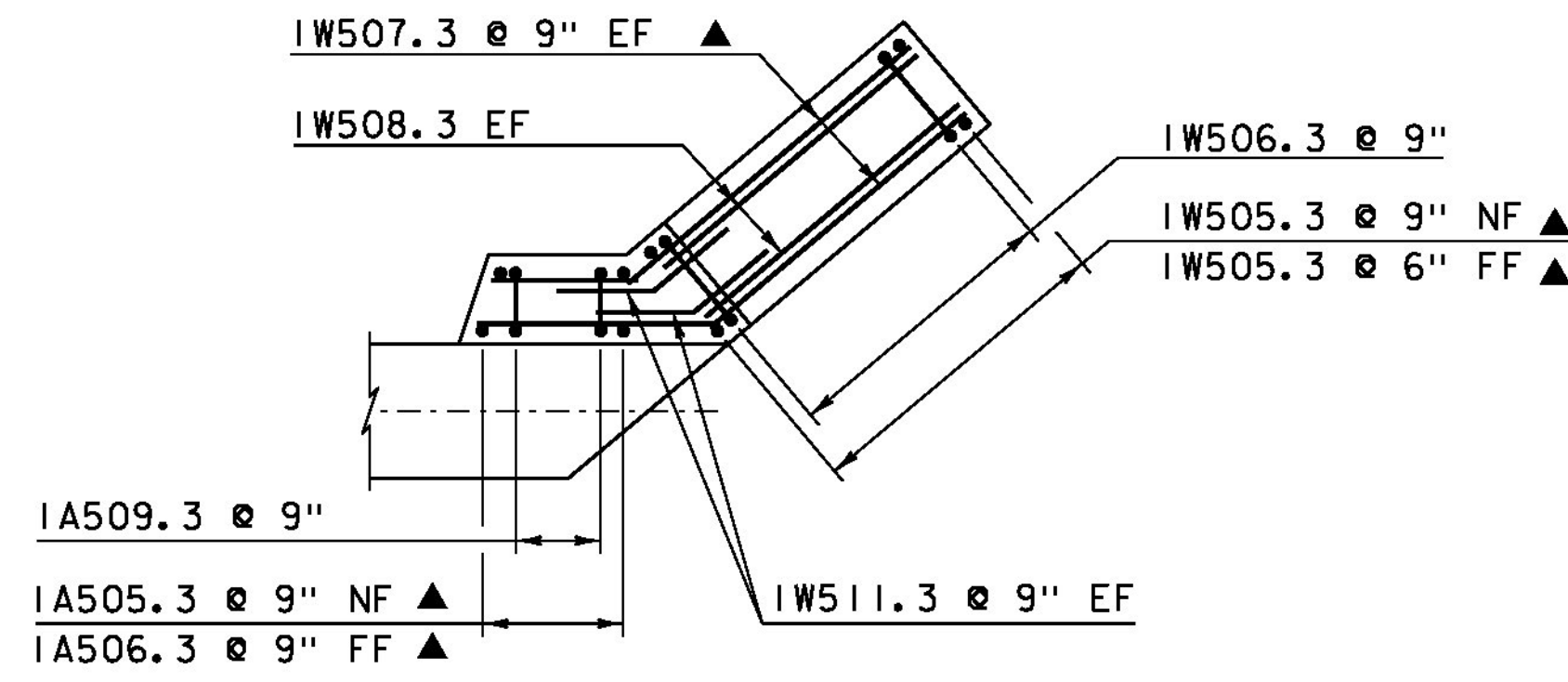


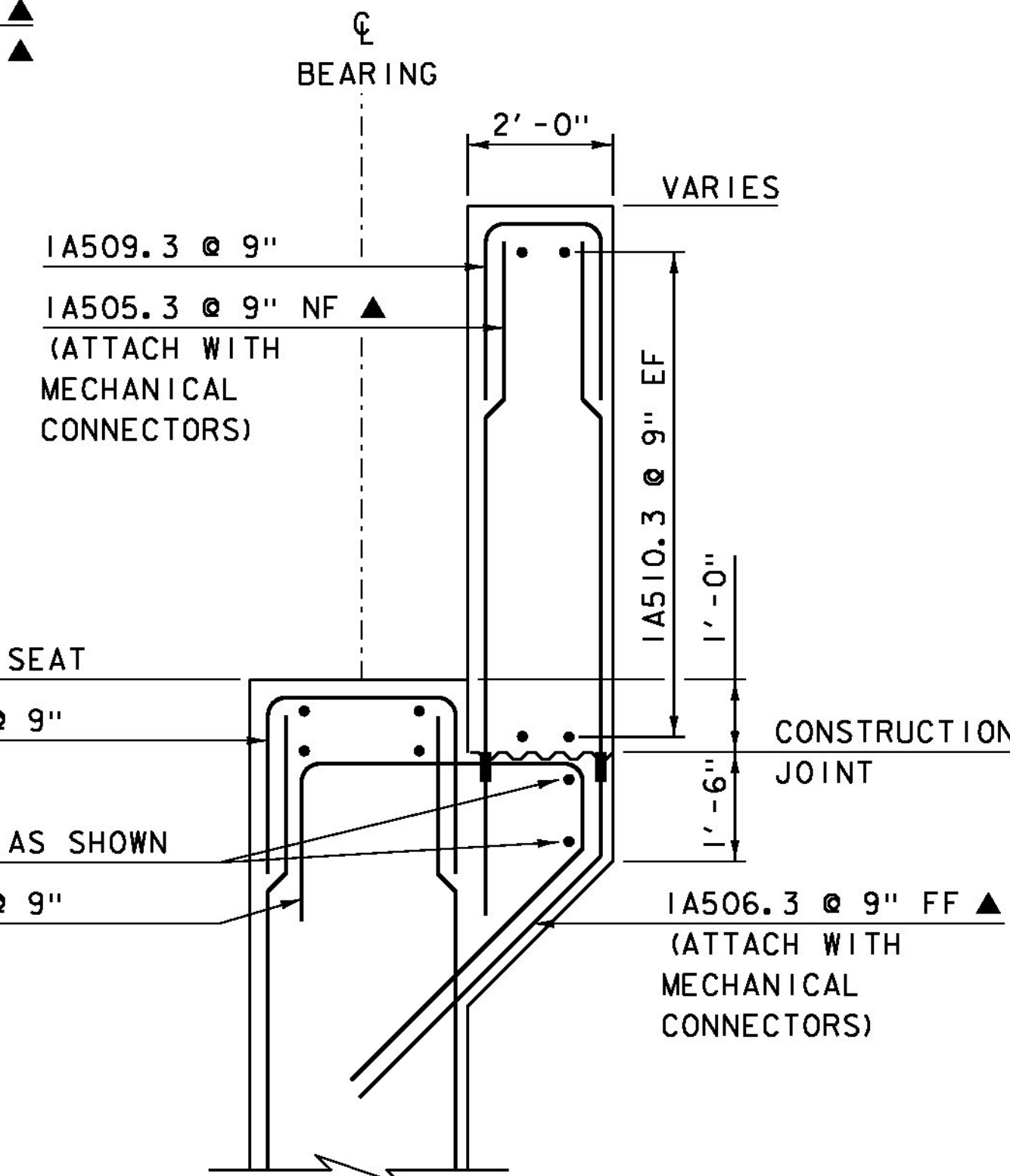
**WINGWALL 2 CORNER DETAIL
ABOVE BRIDGE SEAT**

SCALE: 1/4" = 1'-0"



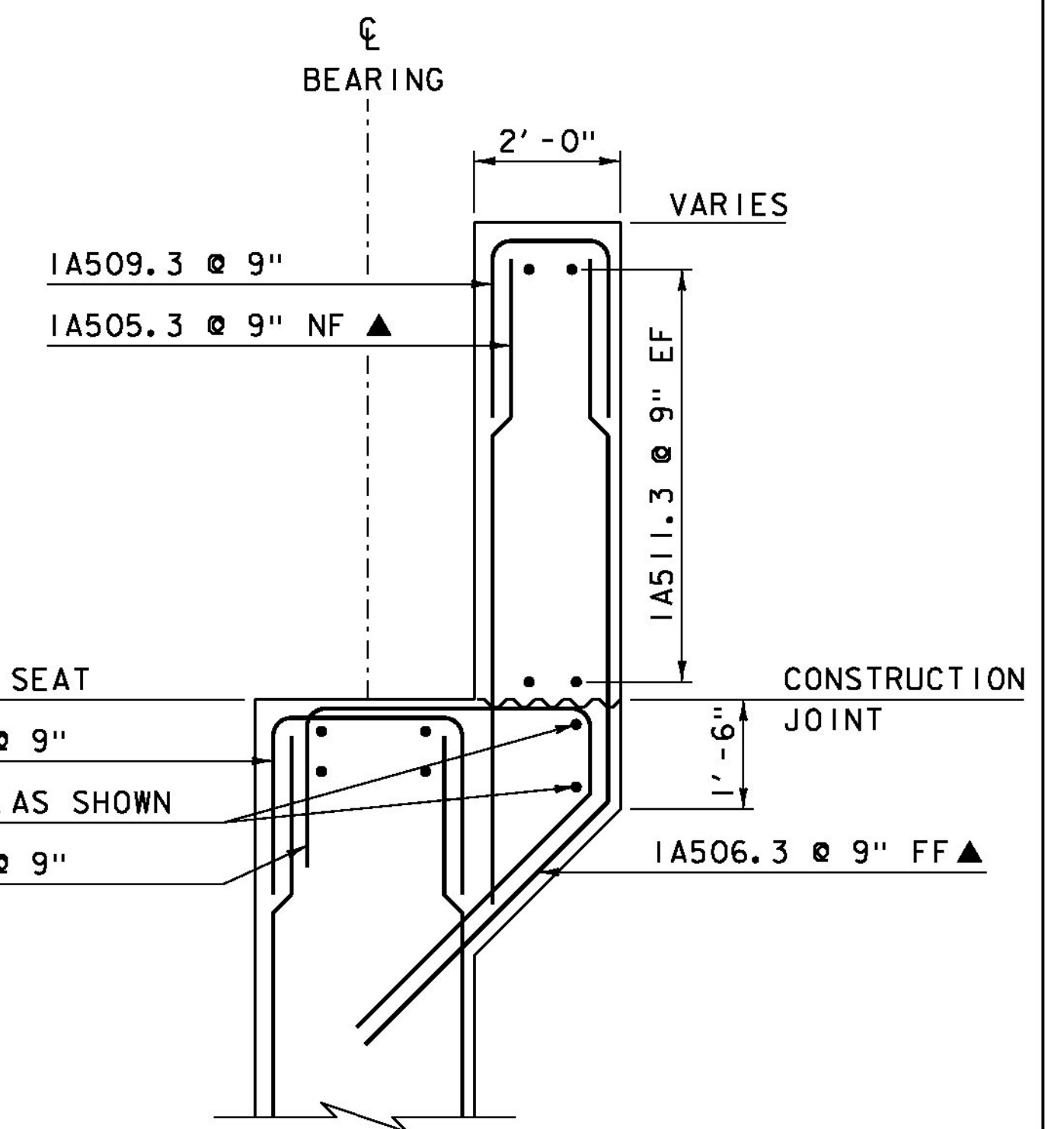
**WINGWALL 1 CORNER DETAIL
ABOVE BRIDGE SEAT**

SCALE: 1/4" = 1'-0"



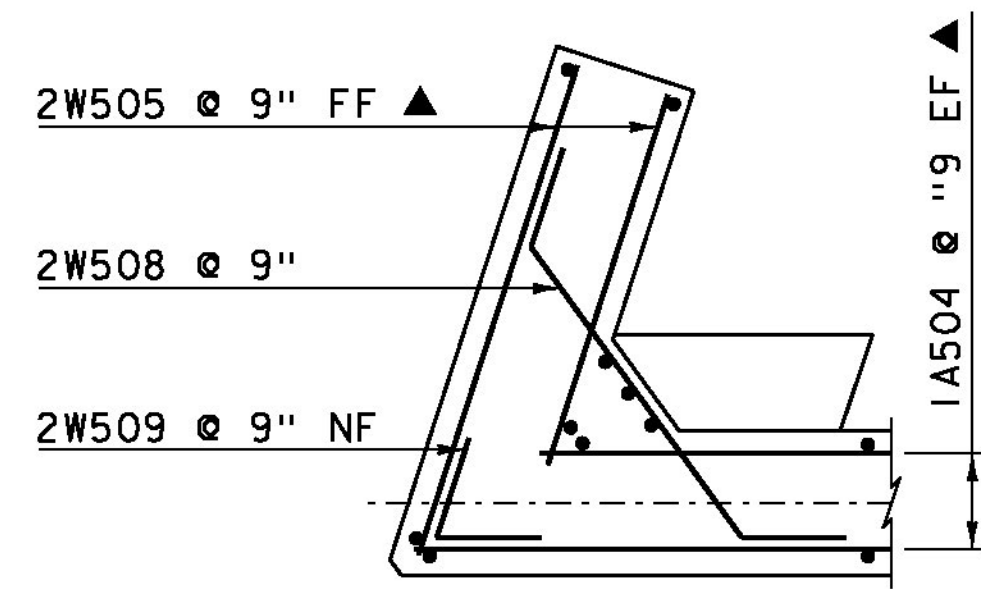
**ABUTMENT 1 CHEEK WALL
REINFORCING @ WW 1**

SCALE: 1/2" = 1'-0"



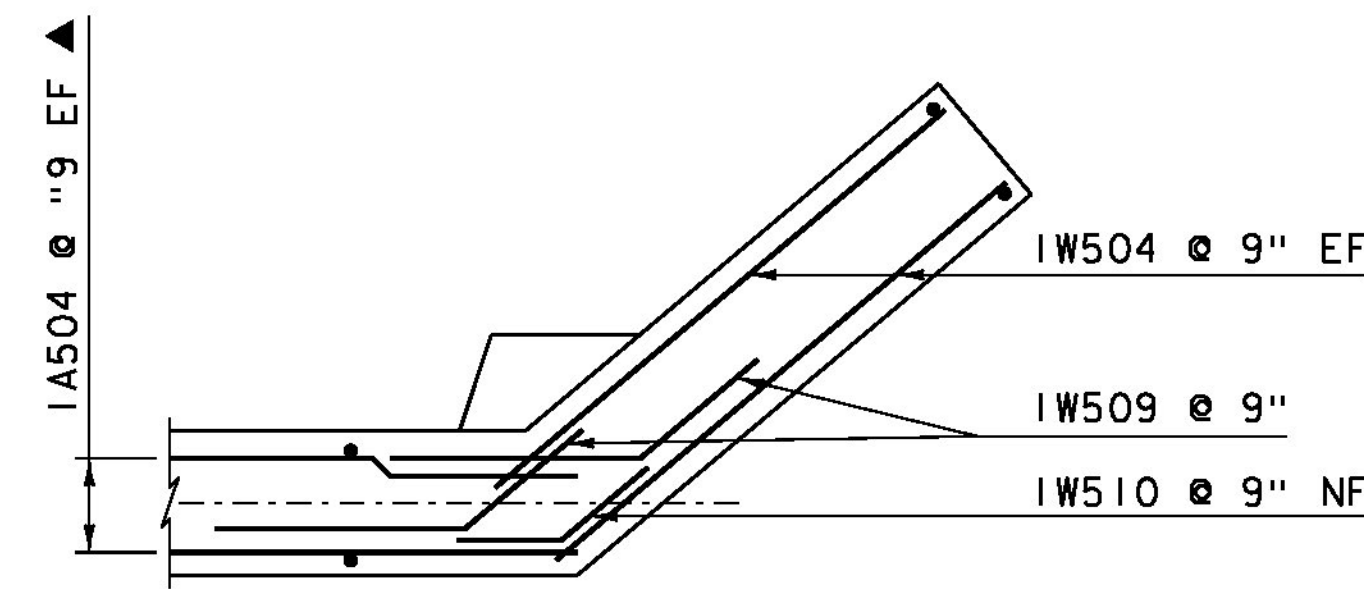
**ABUTMENT 1 CHEEK WALL
REINFORCING @ WW 2**

SCALE: 1/4" = 1'-0"



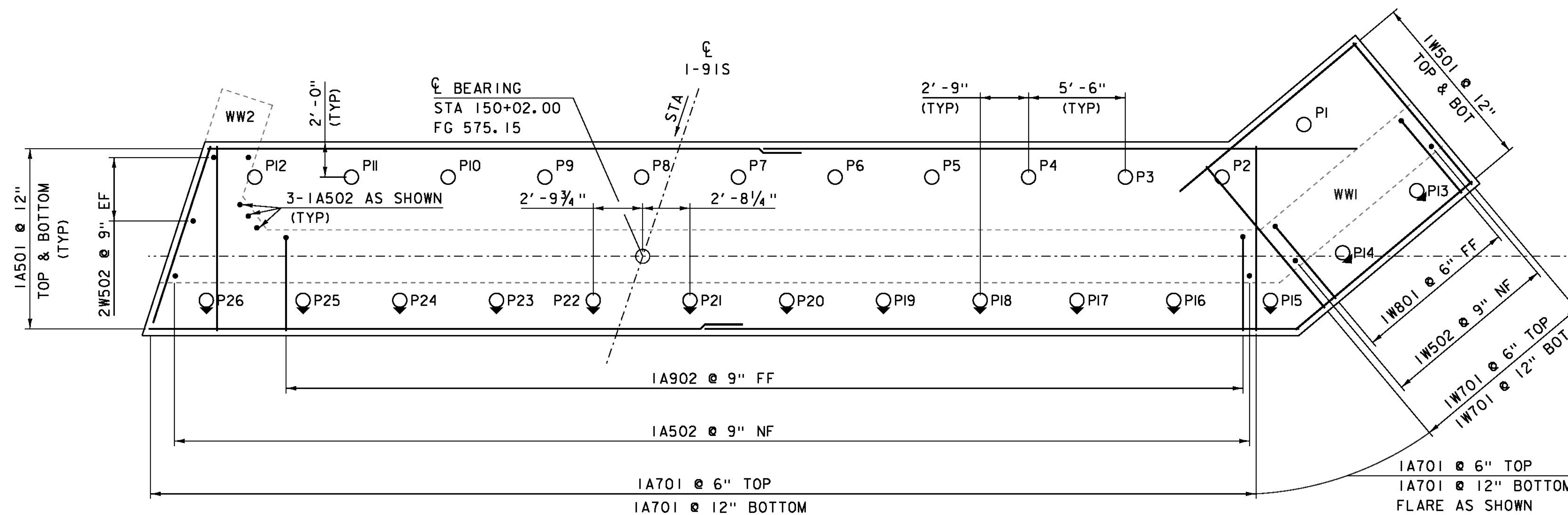
**WINGWALL 2 CORNER DETAIL
BELOW BRIDGE SEAT**

SCALE: 1/4" = 1'-0"



**WINGWALL 1 CORNER DETAIL
BELOW BRIDGE SEAT**

SCALE: 1/4" = 1'-0"



ABUTMENT 1 FOOTING PLAN

SCALE: 1/4" = 1'-0"

NOTE:

- NF = NEAR FACE
- FF = FAR FACE
- EF = EACH FACE
- ▲ = CUT TO FIT IN FIELD
- = MECHANICAL CONNECTOR
- 3" CLEAR, UNLESS OTHERWISE SPECIFIED ON THE PLANS.
- 2'-2" LAP FOR #5 BAR
- 2'-7" LAP FOR #6 BAR
- 3'-5" LAP FOR #7 BAR
- 4'-6" LAP FOR #8 BAR

PROJECT NAME: HARFORD
PROJECT NUMBER: IM 091-2(79)

FILE NAME: s12a132sub_abl.dgn
PROJECT LEADER: K. HIGGINS
DESIGNED BY: G. LAROCHE
ABUTMENT 1 FOOTING

PLOT DATE: 15-DEC-2014
DRAWN BY: J. SALVATORI
CHECKED BY: G. LAROCHE
SHEET 102 OF 166