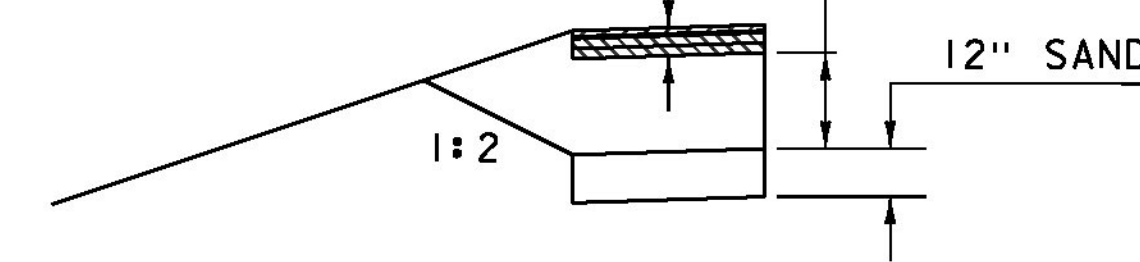


- \* 1 1/2" SUPERPAVE BITUMINOUS CONCRETE PAVEMENT, TYPE IVS OVER  
1/2" SUPERPAVE BITUMINOUS CONCRETE PAVEMENT, TYPE IV SHIM
- \*\* 1 1/2" SUPERPAVE BITUMINOUS CONCRETE PAVEMENT, TYPE IVS OVER  
1/2" SUPERPAVE BITUMINOUS CONCRETE PAVEMENT SHIM, TYPE IVS OVER  
2 1/2" SUPERPAVE BITUMINOUS CONCRETE PAVEMENT, TYPE IIS OVER  
2 1/2" SUPERPAVE BITUMINOUS CONCRETE PAVEMENT, TYPE IIS

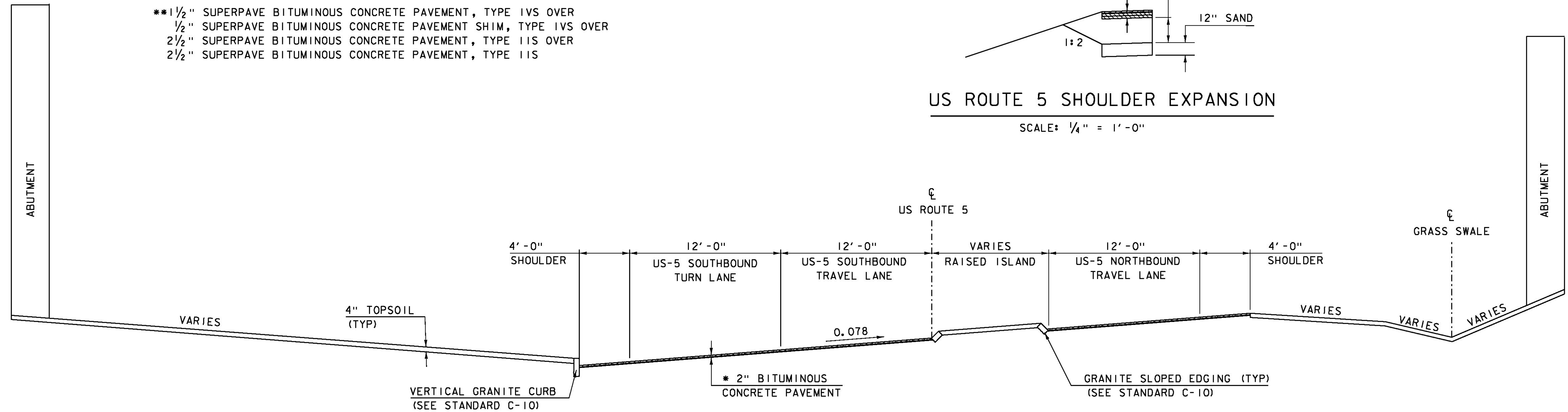
\*\* 7" BITUMINOUS CONCRETE PAVEMENT  
(IN AREAS OF SHOULDER EXPANSION ONLY)

24" SUBBASE OF DENSE  
GRADED CRUSHED STONE



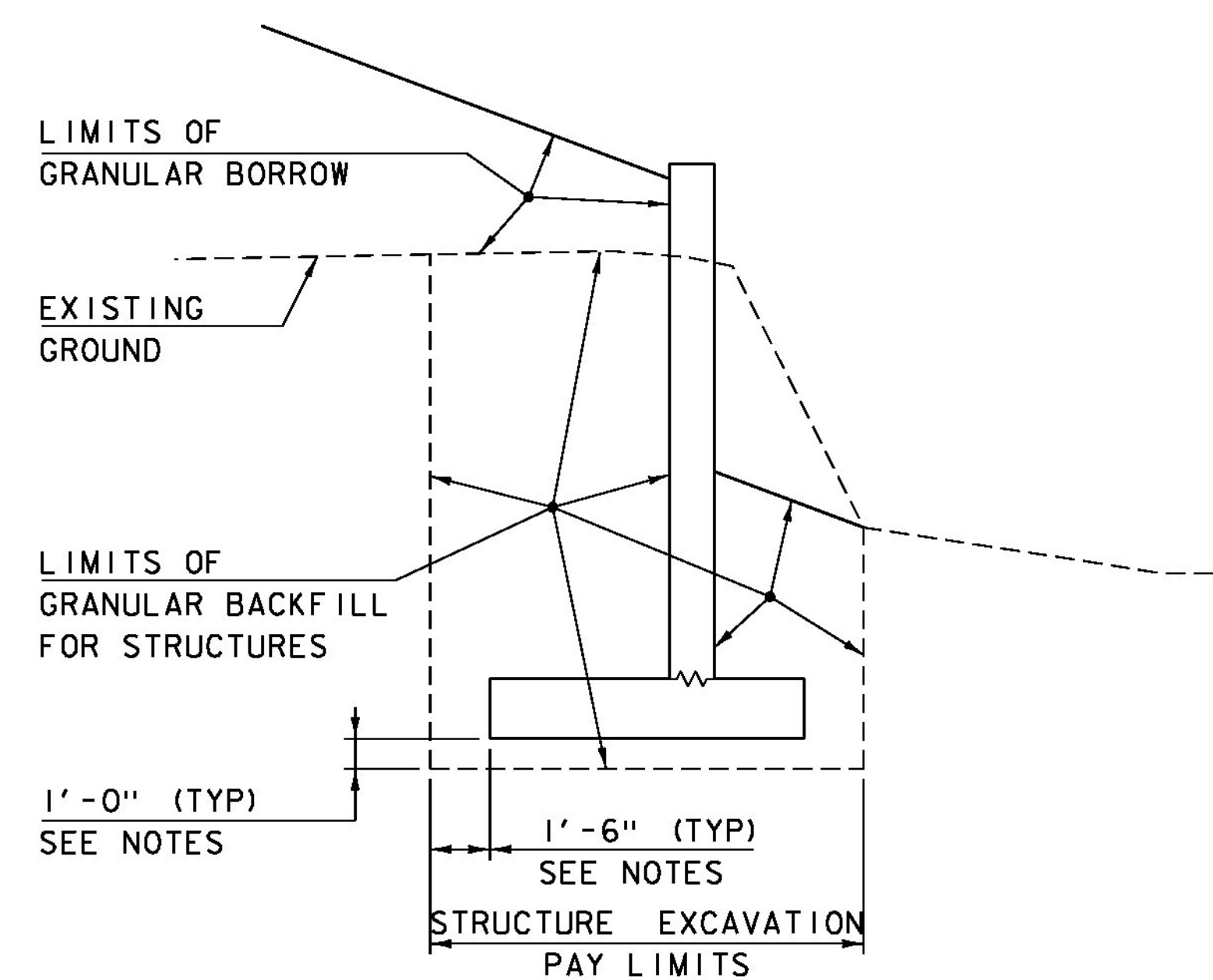
**US ROUTE 5 SHOULDER EXPANSION**

SCALE: 1/4" = 1'-0"



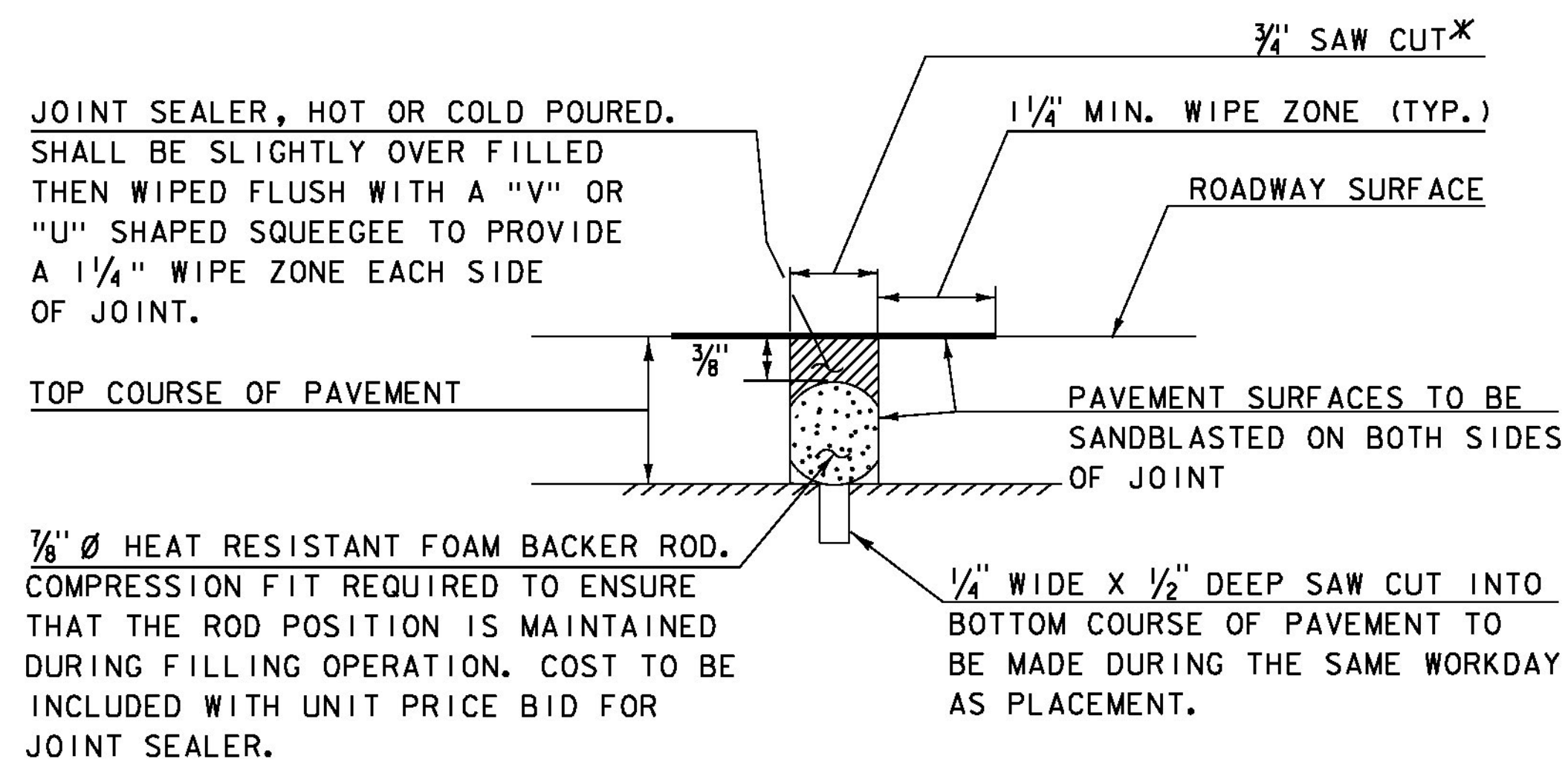
**US ROUTE 5 PROPOSED TYPICAL SECTION**

SCALE: 1/4" = 1'-0"



**TYPICAL EARTHWORK SECTION  
FOR RETAINING WALL**

NOT TO SCALE



**SAWED PAVEMENT JOINT DETAIL**  
(NOT TO SCALE)

\* JOINT IS TO BE LOCATED ACCURATELY BY STRING LINING, OR OTHER MEANS, PRIOR TO PAVING, SO THAT THE SAW CUTS WILL BE MADE DIRECTLY OVER THE END OF CONCRETE DECK. JOINT SHALL BE CUT DRY IN A SINGLE PASS AND BE SEALED WITHIN 24 HOURS OR PRIOR TO EXPOSURE TO TRAFFIC. JOINT SHALL BE CLEANED PRIOR TO APPLYING THE JOINT SEALER.

PROJECT NAME: HARTFORD  
PROJECT NUMBER: IM 091-2(79)

FILE NAME: s12a132typical.dgn PLOT DATE: 15-DEC-2014  
PROJECT LEADER: K. HIGGINS DRAWN BY: K. FRIEDLAND  
DESIGNED BY: W. LAMMER CHECKED BY: J. SALVATORI  
TYPICAL SECTIONS 1 SHEET 13 OF 166