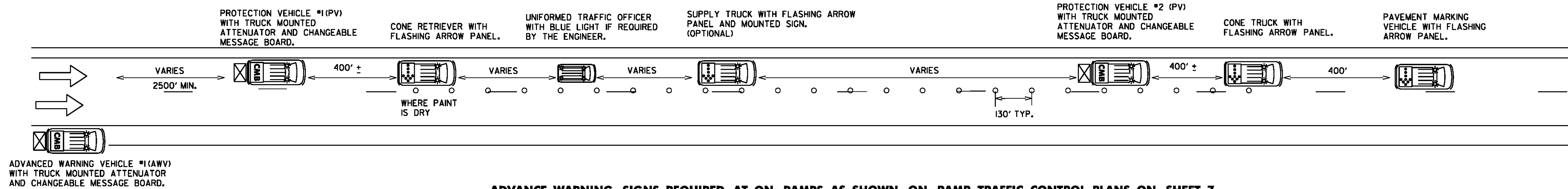
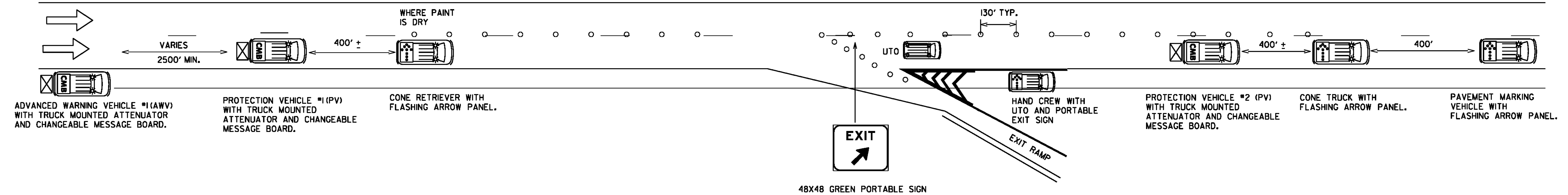


## LEFT LANE CLOSED CONTROL PLAN



## RIGHT LANE AND GORE TRAFFIC CONTROL PLAN



### NOTES

1. ALL WORK VEHICLES USED ON THE INTERSTATE SHALL DISPLAY HIGH-INTENSITY ROTATING, FLASHING, OSCILLATING OR STROBE LIGHTS.
2. ALL PROTECTION VEHICLES SHALL BE EQUIPPED WITH A TRUCK MOUNTED ATTENUATOR AND A CHANGEABLE MESSAGE BOARD, AND WILL BE PAID FOR UNDER ITEM 900.630 SPECIAL PROVISION (TRUCK MOUNTED ATTENUATOR AWV/PV), SEE SHEET 29 FOR MESSAGES.
3. FLASHING ARROW PANELS MOUNTED TO VEHICLES WILL NOT BE PAID FOR DIRECTLY, BUT WILL BE CONSIDERED INCIDENTAL TO ITEM 641JO (TRAFFIC CONTROL).
4. ADVANCED WARNING VEHICLE #1 SHALL TRAVEL AT A VARYING DISTANCE (2500' MIN.) FROM PROTECTION VEHICLE #1 TO ENSURE ADEQUATE SIGHT DISTANCE FOR TRAFFIC APPROACHING FROM THE REAR.
5. UNIFORMED TRAFFIC OFFICER (UTO) REQUIRED FOR NIGHT WORK, WHEN ANY WORK IS BEING DONE ON RAMP OR GORES, AND AT OTHER TIMES AS DIRECTED BY THE ENGINEER.
6. THE NUMBER OF CHANNELIZING DEVICES AND OTHER TRAFFIC CONTROL DEVICES SHOWN ON THIS SHEET ARE FOR ILLUSTRATIVE PURPOSES ONLY. THE ACTUAL NUMBER REQUIRED IS TO BE DETERMINED BASED ON FIELD CONDITIONS.
7. CHANNELIZING DEVICES SHALL BE PLACED AS FOLLOWS:  
TAPERS - DEVICES SHALL BE SPACED A MAXIMUM OF 'S' (THE SPEED LIMIT IN FEET) APART.  
TANGENT - DEVICES SHALL BE PLACED 2 X 'S' (THE SPEED LIMIT IN FEET) APART.
8. ALL DISTANCES ARE DESIRABLE MINIMUMS, FIELD CONDITIONS SHALL CONTROL THE ACTUAL PLACEMENT.
9. CONE VEHICLES SHALL HAVE PROTECTIVE CAGES TO PROTECT THE PERSON PLACING AND RETRIEVING CONES.
10. ALL SIGNS SHALL BE IN PLACE BEFORE WORK BEGINS ON RAMP OR GORES.
11. MAXIMUM ALLOWABLE LANE CLOSURE IS 3 MILES

### ADVANCE WARNING SIGNS REQUIRED AT ON RAMP AS SHOWN ON RAMP TRAFFIC CONTROL PLANS ON SHEET 7

#### LEGEND

- INDICATES TRAFFIC FLOW
- FLASHING ARROW PANEL
- TRUCK MOUNTED ATTENUATOR
- CHANGEABLE MESSAGE BOARD
- 28" RETROREFLECTORIZED CONES
- MARKING OPERATIONS VEHICLE
- UNIFORMED TRAFFIC CONTROL OFFICER WITH BLUE LIGHT

NOT TO SCALE

### LEFT LANE AND RIGHT LANE AND GORE TRAFFIC CONTROL PLAN

PROJECT NAME: STATEWIDE  
PROJECT NUMBER: IMG MARK (I12)  
FILE NAME: 11k274.dgn  
PROJECT LEADER: A GAMBLE  
IPARM FLIE: 11k274tcp1.i

PLOT DATE: 25-JAN-2012  
DRAWN BY: KAS  
SHEET 6 OF 29