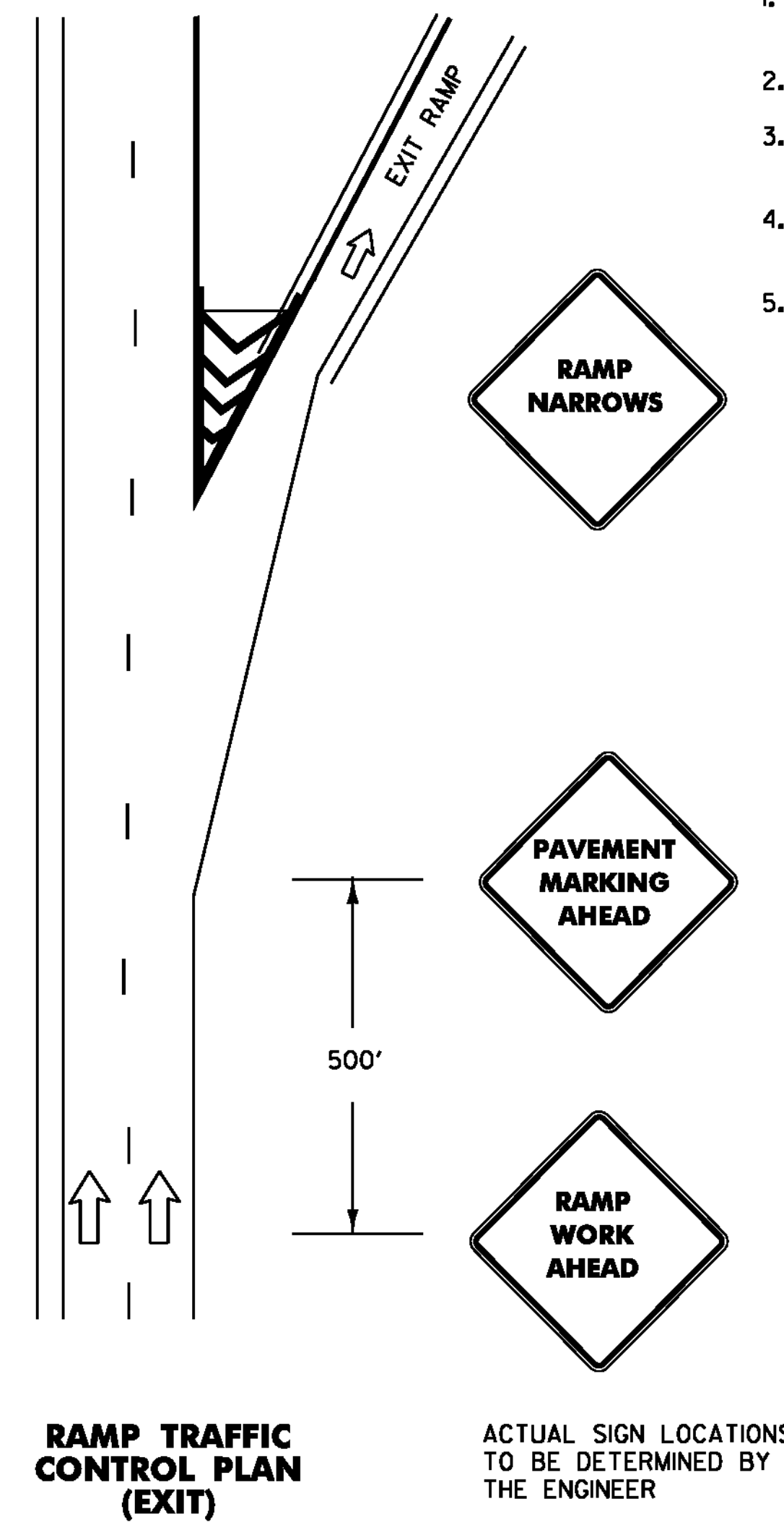
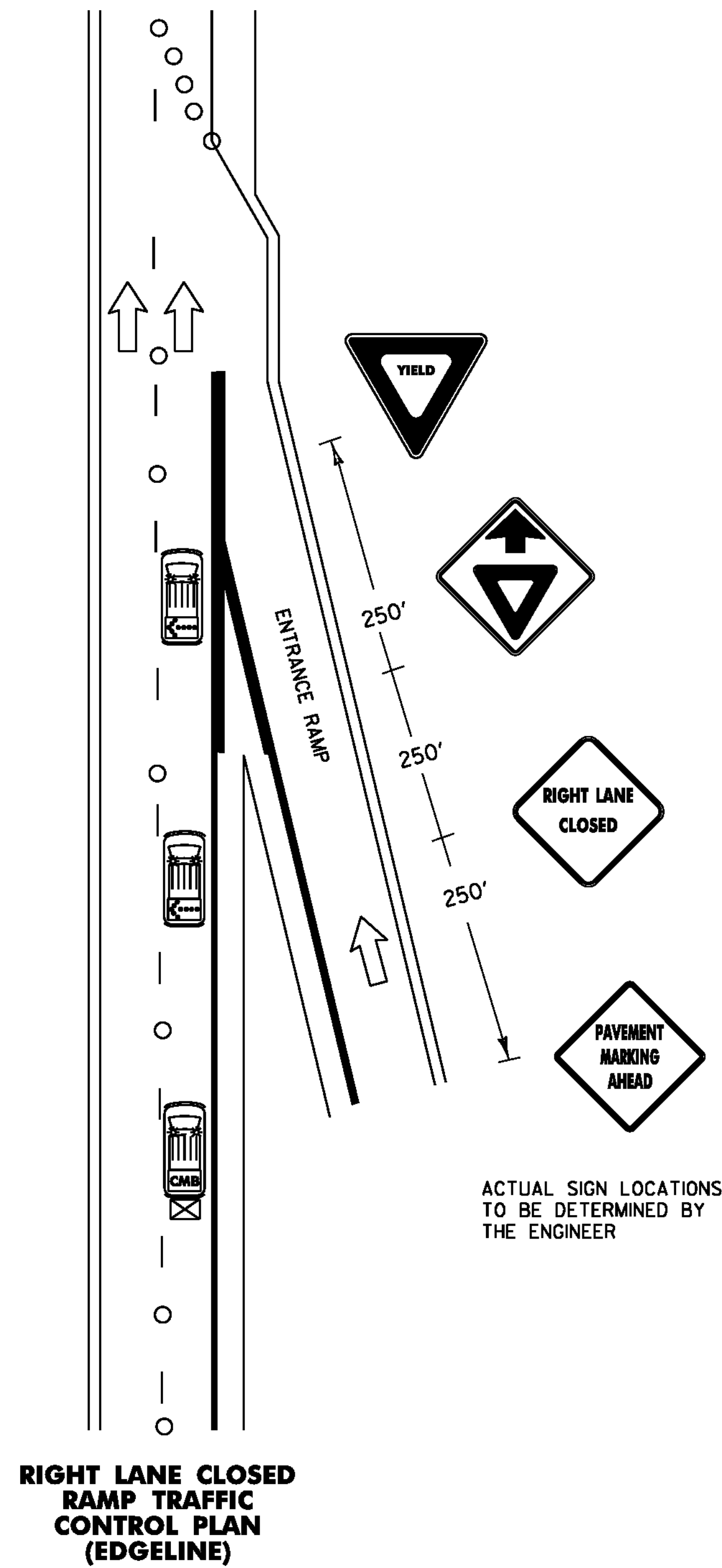
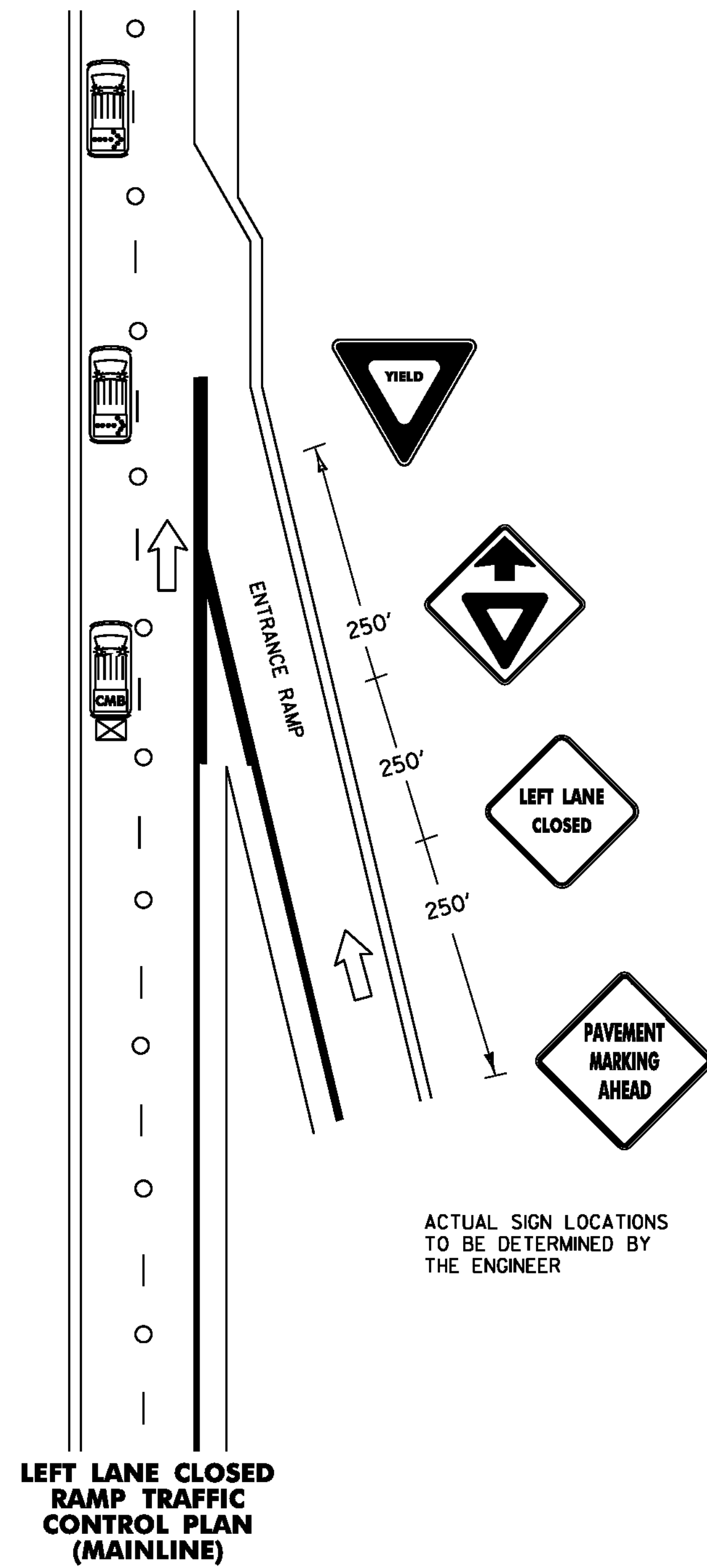


EXIT AND ENTRANCE RAMP TRAFFIC CONTROL PLAN

NOTES

1. ALL WORK VEHICLES USED ON THE INTERSTATE SHALL DISPLAY HIGH-INTENSITY ROTATING, FLASHING, OSCILLATING OR STROBE LIGHTS.
2. ALL HAND WORK MUST BE DONE WITH A SPOTTER AT ALL TIMES.
3. CONE TAPERS SHALL BE USED TO DIRECT TRAFFIC AROUND WORKERS AND WET PAINT ON RAMPS
4. UNIFORMED TRAFFIC OFFICER (UTO) REQUIRED FOR NIGHT WORK, WHEN ANY WORK IS BEING DONE ON RAMPS OR GORES, AND AT OTHER TIMES AS DIRECTED BY THE ENGINEER.
5. ALL SIGNS SHALL BE IN PLACE BEFORE WORK BEGINS ON RAMPS OR GOES.



LEGEND

- INDICATES TRAFFIC FLOW
- FLASHING ARROW PANEL
- TRUCK MOUNTED ATTENUATOR
- CHANGEABLE MESSAGE BOARD
- 28" RETROREFLECTORIZED CONES

**ADVANCED WARNING SIGNS FOR RAMPS
FOR SIGN DETAILS SEE SHEET 8**

NOT TO SCALE

RAMP TRAFFIC CONTROL PLAN	PROJECT NAME: STATEWIDE	PLOT DATE: 25-JAN-2012
	PROJECT NUMBER: IMG MARK (I12)	DRAWN BY: KAS
	FILE NAME: 11k274.dgn	
	PROJECT LEADER: A GAMBLE	
	IPARM FLIE: 11k274tcp2.i	SHEET 7 OF 29