

TEMPORARY 6 INCH WHITE LINE, PAINT  
 DURABLE 6 INCH WHITE LINE, POLYUREA  
 RAMP A SOLID RT 1309'  
 RAMP C SOLID RT 1341'  
 RAMP H SOLID RT 103'  
 130.626 TO 130.719 DOTTED LT 490'

TEMPORARY 6 INCH YELLOW LINE, PAINT  
 DURABLE 6 INCH YELLOW LINE, POLYUREA  
 RAMP A SOLID LT 1309'  
 RAMP C SOLID LT 1251'  
 RAMP C SOLID LT 160'  
 RAMP H SOLID LT 103'

TEMPORARY 12 INCH WHITE LINE, PAINT  
 DURABLE 12 INCH WHITE LINE, POLYUREA  
 I-91 SOLID RT 111'  
 RAMP C SOLID LT 57'  
 RAMP C SOLID LT (GORE STRIPES) 57'  
 RAMP C SOLID LT 30'  
 RAMP H SOLID RT 33'

TEMPORARY 24 INCH STOP BAR, PAINT  
 DURABLE 24 INCH STOP BAR (OPTION BID ITEM)  
 RAMP H 22'

TEMPORARY LETTER OR SYMBOL, PAINT  
 DURABLE LETTER OR SYMBOL (OPTION BID ITEM)

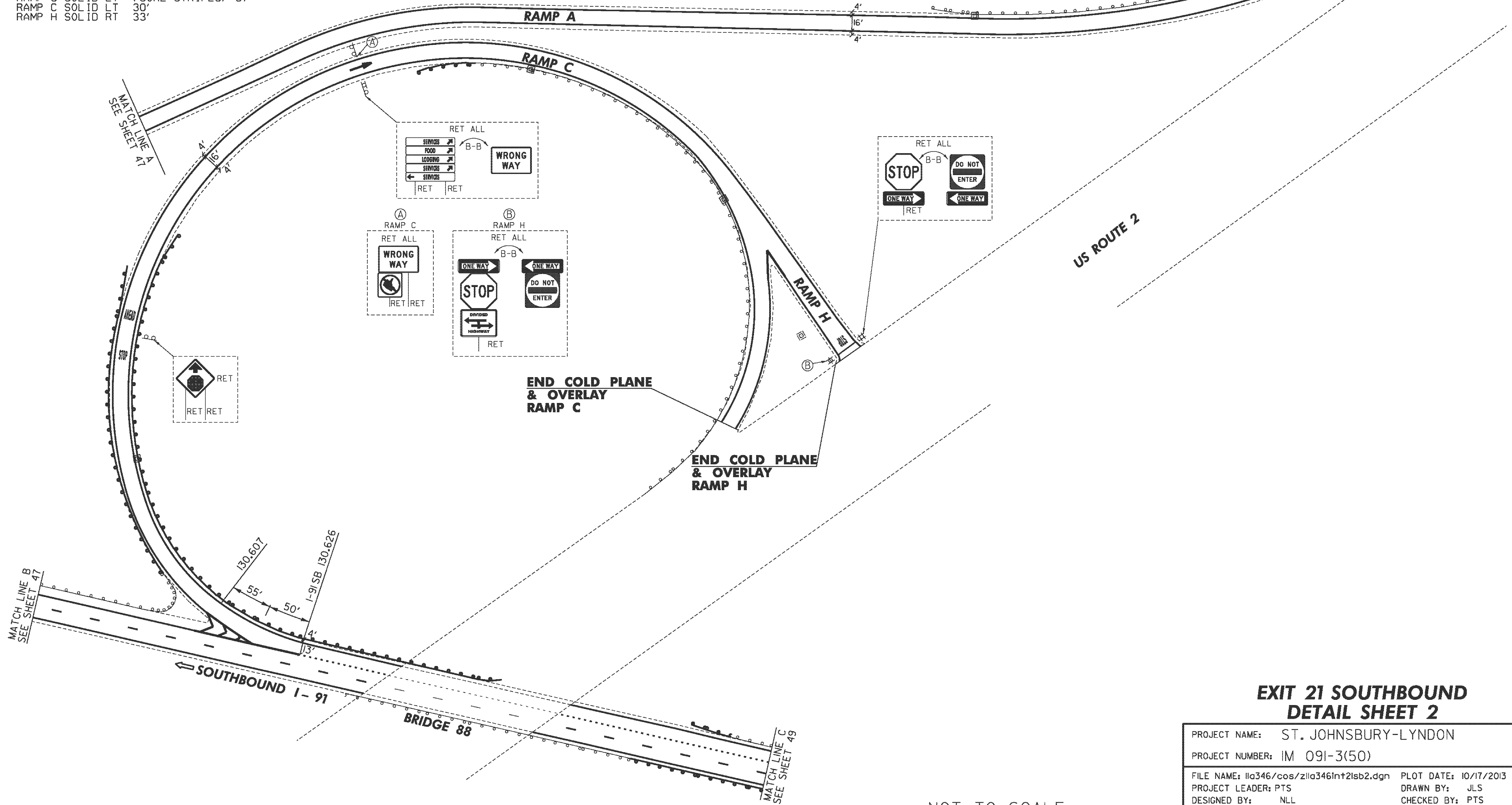
RAMP C \* STOP \*  
 RAMP C \* AHEAD \*  
 RAMP C WRONG WAY ARROW  
 RAMP H \* STOP \*

REHAB. DROP INLETS,  
 CATCH BASINS, OR MANHOLES,  
 CLASS I OR CLASS II  
 RAMP A RT  
 RAMP C RT (3)

BITUMINOUS CONCRETE CURB, TYPE A  
 REMOVAL OF EXISTING CURB  
 CABLE GUARDRAIL J-BOLT, GALVANIZED  
 CABLE GUARDRAIL SPLICE UNIT  
 REPLACEMENT OF GUARDRAIL CABLE  
 STEEL BEAM GUARDRAIL, GALVANIZED  
 MANUFACTURED TERMINAL SECTION, FLARED  
 ANCHOR FOR STEEL BEAM RAIL  
 REMOVAL AND DISPOSAL OF GUARDRAIL  
 DELINEATOR WITH STEEL POST  
 SEE ITEM DETAIL SUMMARY SHEETS

STONE FILL, TYPE I  
 GEOTEXTILE UNDER STONE FILL  
 SEE SOUTHBOUND DITCH CLEANING SHEET

**BEGIN COLD PLANE  
 & OVERLAY  
 RAMP A**



US ROUTE 2

SOUTHBOUND I-91

BRIDGE 88

**EXIT 21 SOUTHBOUND  
 DETAIL SHEET 2**

PROJECT NAME:	ST. JOHNSBURY-LYNDON
PROJECT NUMBER:	IM 091-3(50)
FILE NAME:	lla346/cos/zlla346Int2lsb2.dgn
PROJECT LEADER:	PTS
DESIGNED BY:	NLL
IPARM FILE NAME:	lla346_48
PLLOT DATE:	10/17/2013
DRAWN BY:	JLS
CHECKED BY:	PTS
SHEET	48 OF 72

NOT TO SCALE