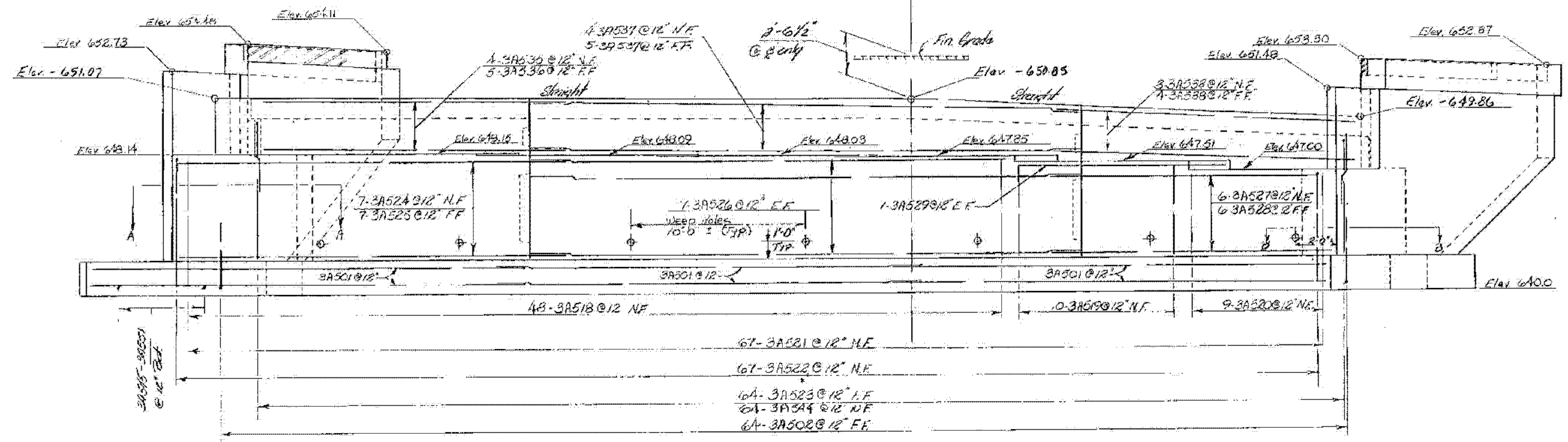


~ ABUT. No. 3 - PLAN ~
Scale 1/4" = 1'-0"

SECTION A-A
Scale 3/8" = 1'-0"

SECTION B-B
Scale 3/8" = 1'-0"

~ TYPICAL SECTION - ABUT. No. 3 ~
Scale 1/2" = 1'-0"



~ ABUT. No. 3 - ELEVATION ~
Scale 1/4" = 1'-0"

See sheet BR 115 for notes

1-91 BRIDGES 63N
WATERFORD - ST. JOHNSBURY
1M MEMB(32)
SHEET 40 OF 43
FOR REFERENCE ONLY

STATE OF VERMONT DEPARTMENT OF HIGHWAYS	
TOWN OF St. Johnsbury	Bridge No. Log Sta.
HIGHWAY NO. 191	Serv. Sta. 6845+61
191 NB 15.8 over U.S. 95 Relocation Abutment 3 Plan & Elevation	
Designed by A. Elwood	Drawn by R. Whitecomb
Checked by J.R. Burnett date 5-12-75	Bridge Design Supervisor R.S. Haupt date 5-75
PROJECT Barnet - St. Johnsbury	PROJECT NO. EAC 191-2(59)
Bridge Sheet No. 119	Sheet 133 of 338