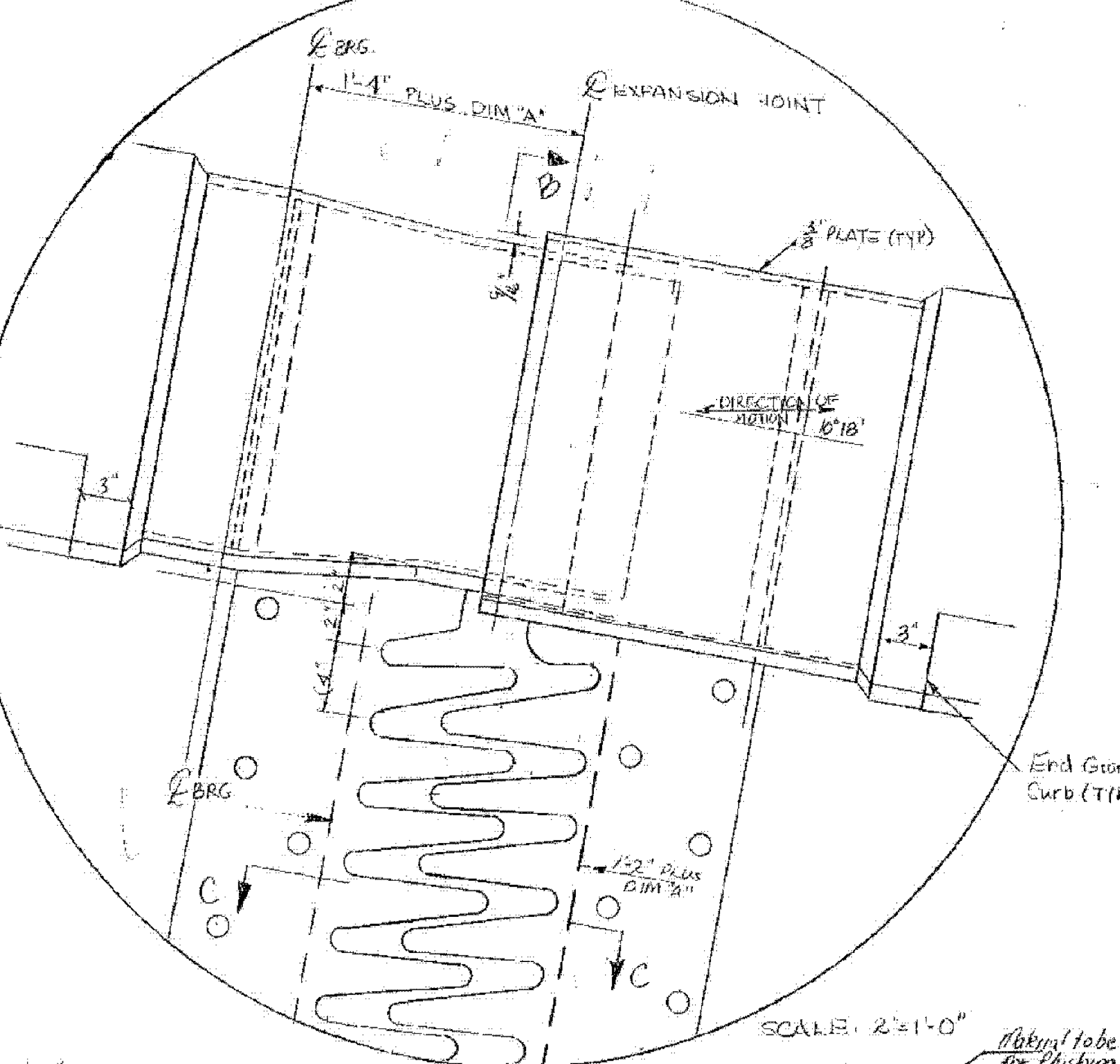
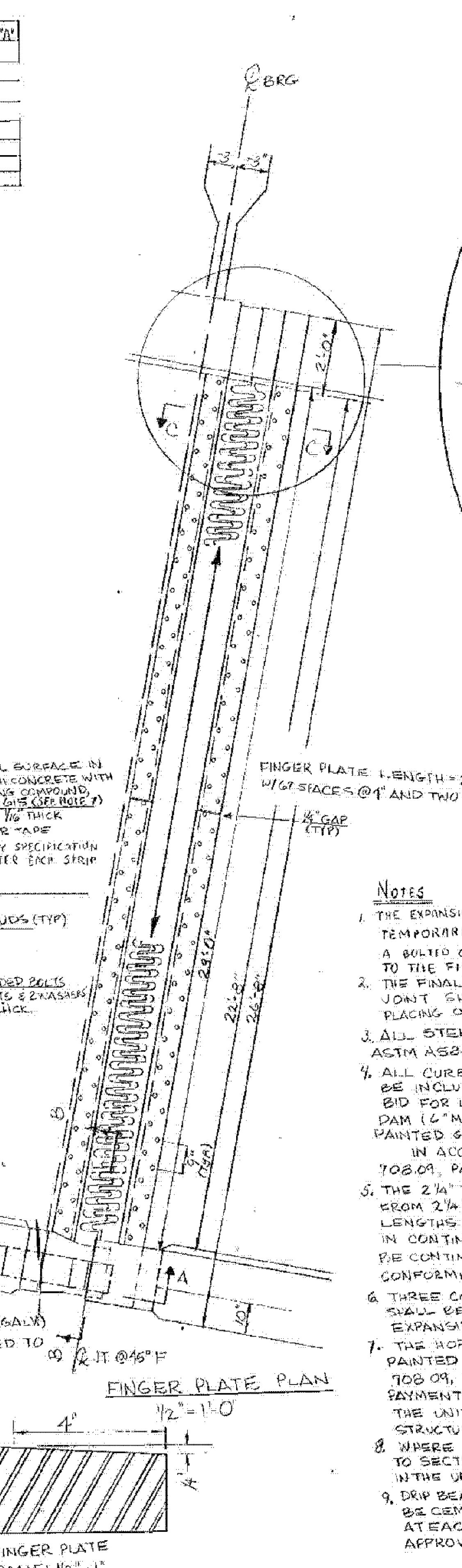
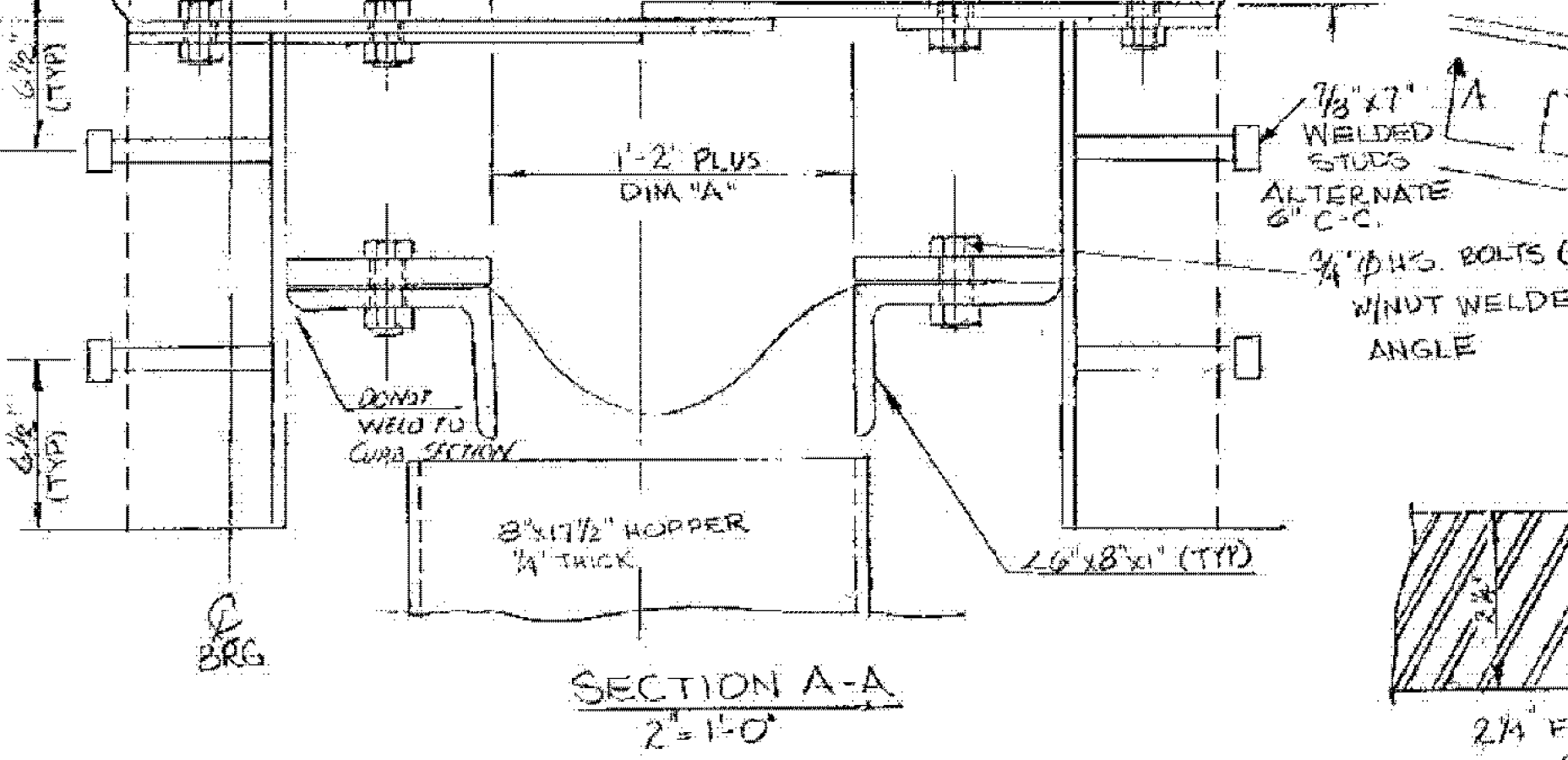
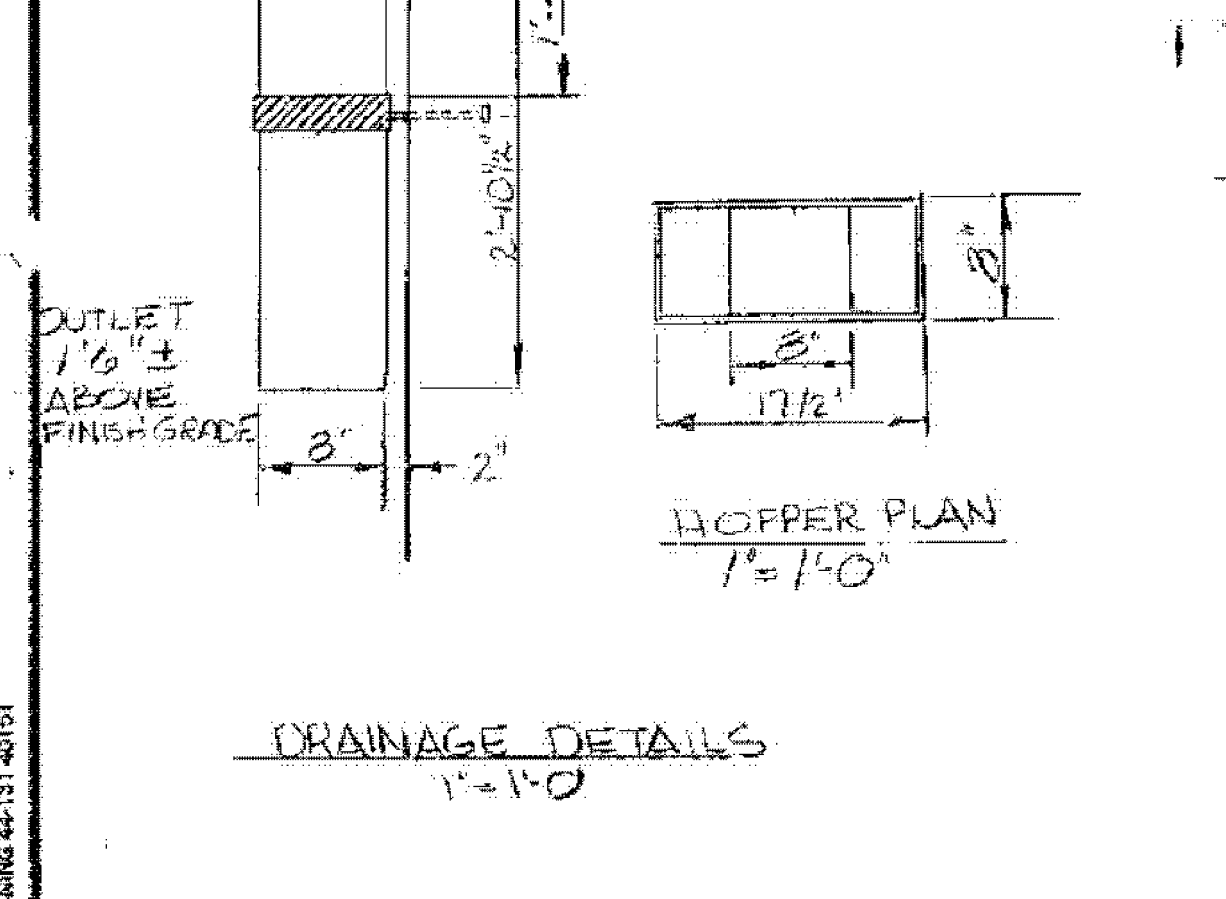
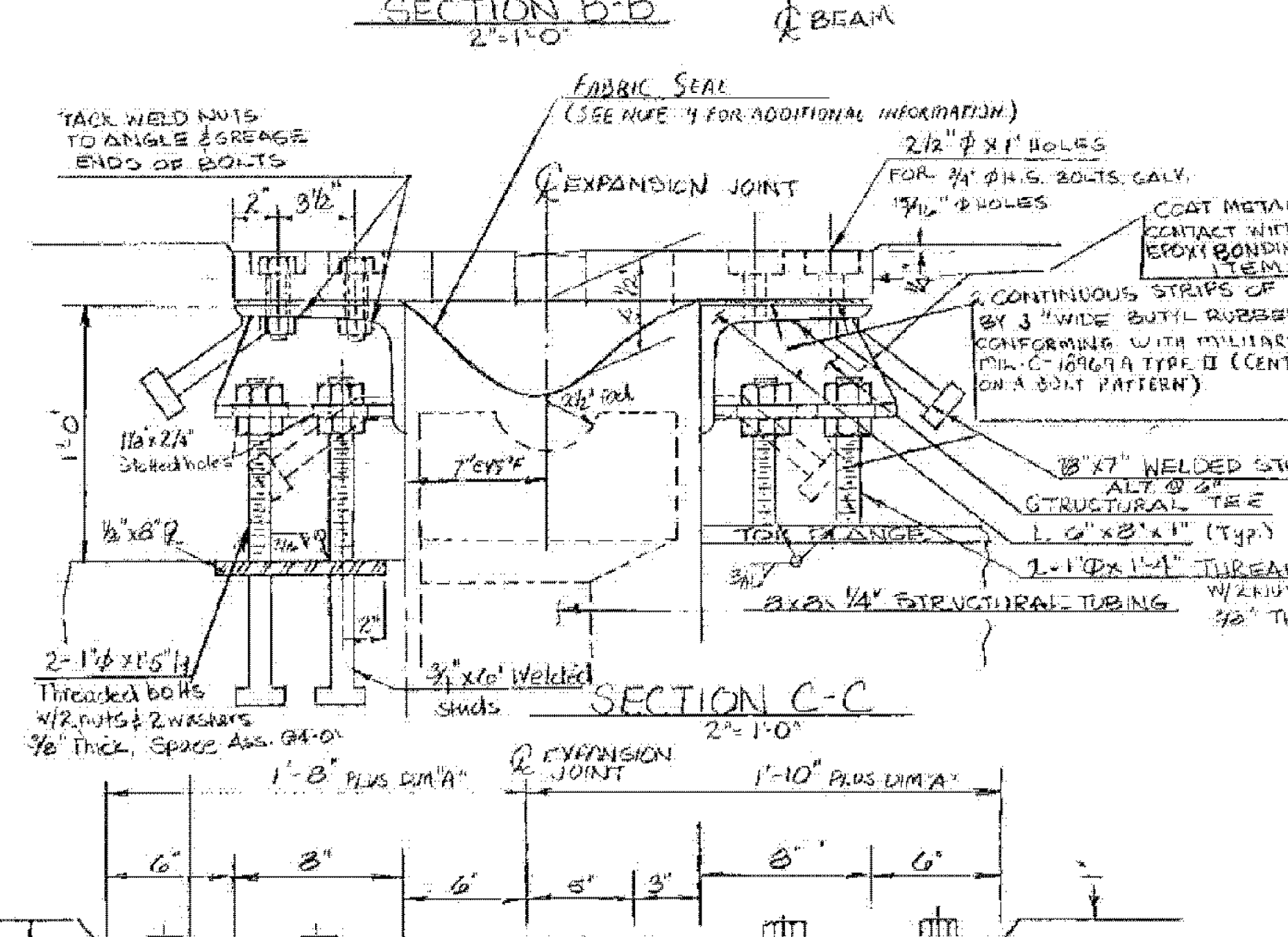
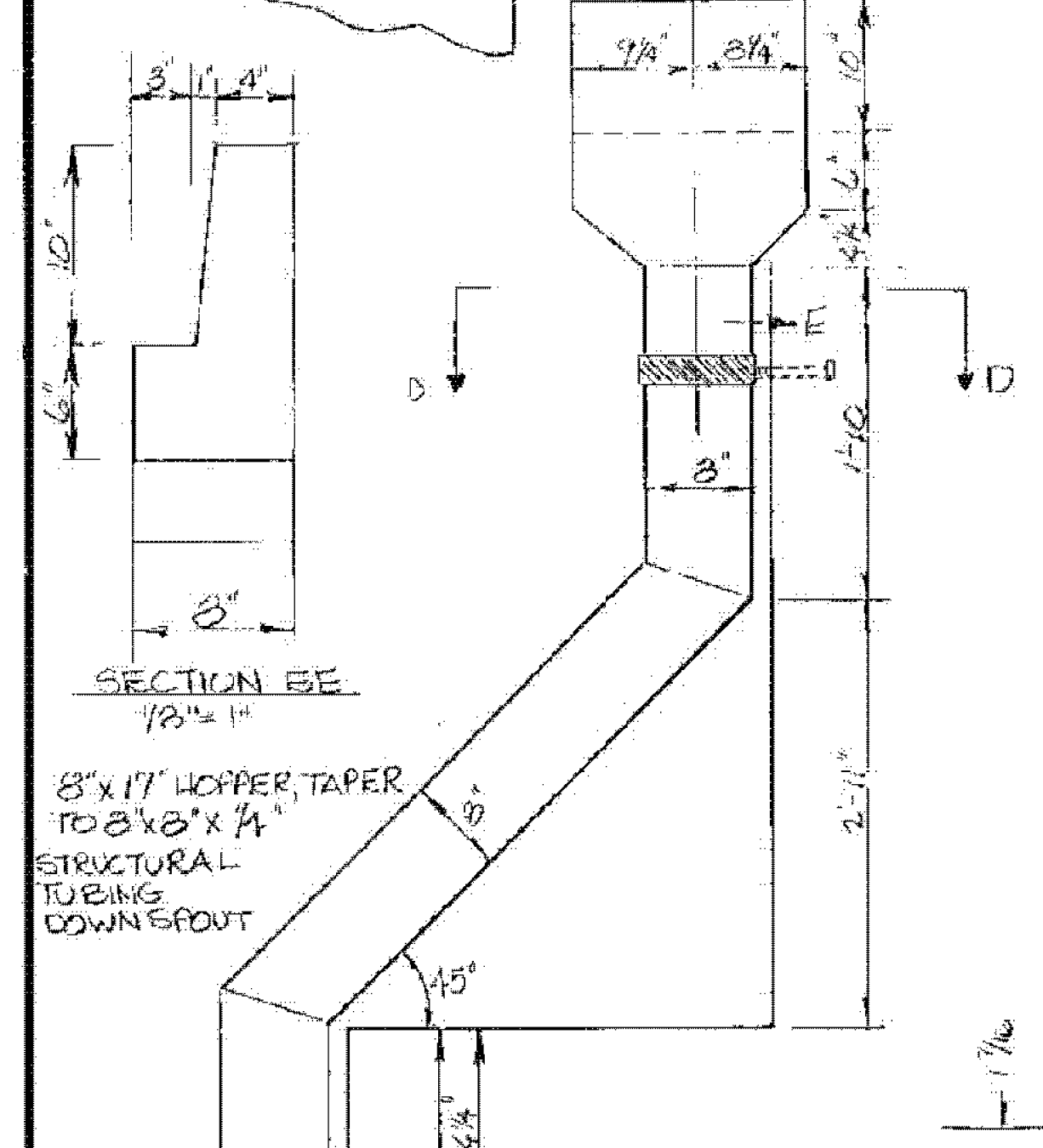
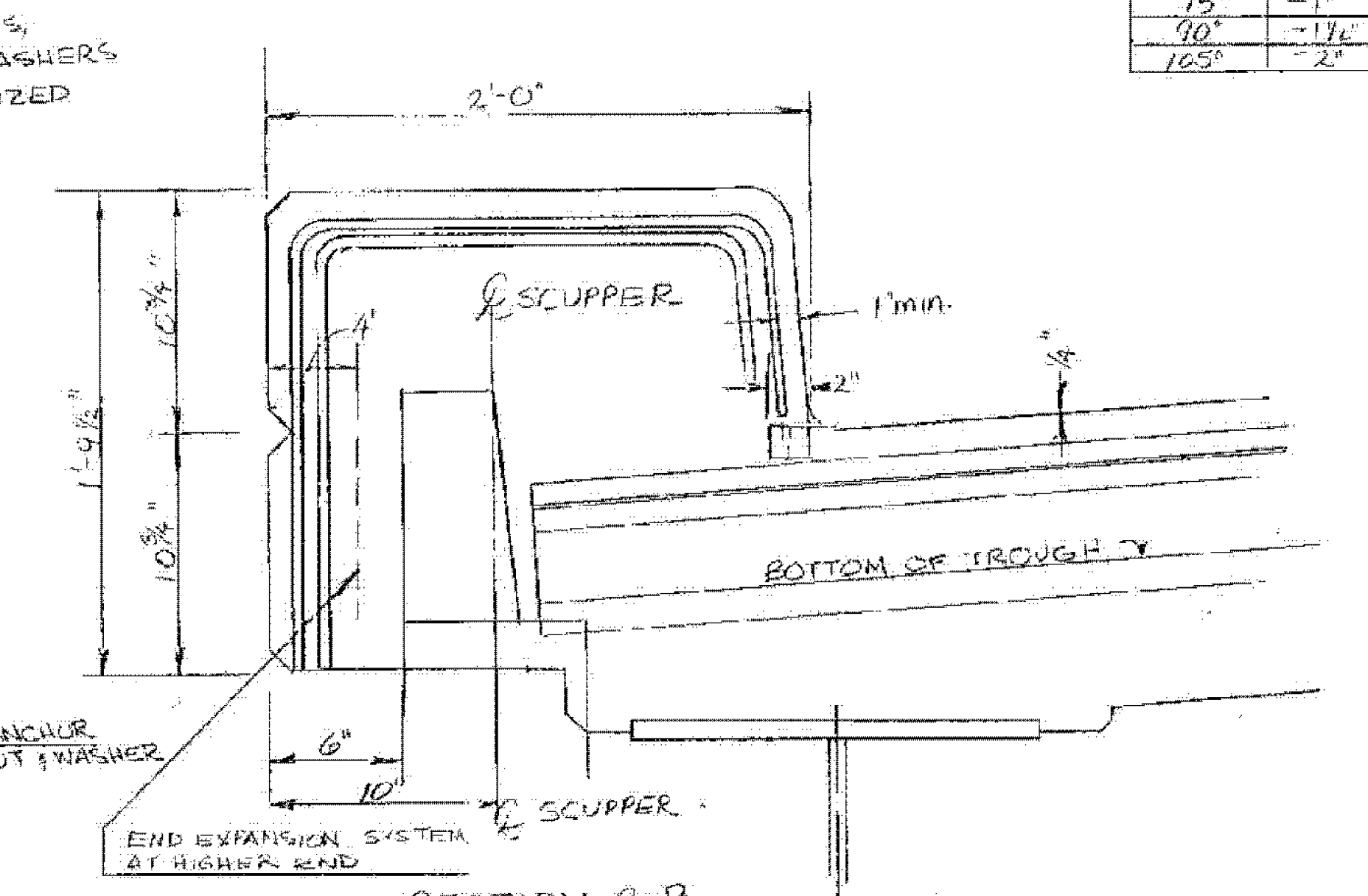
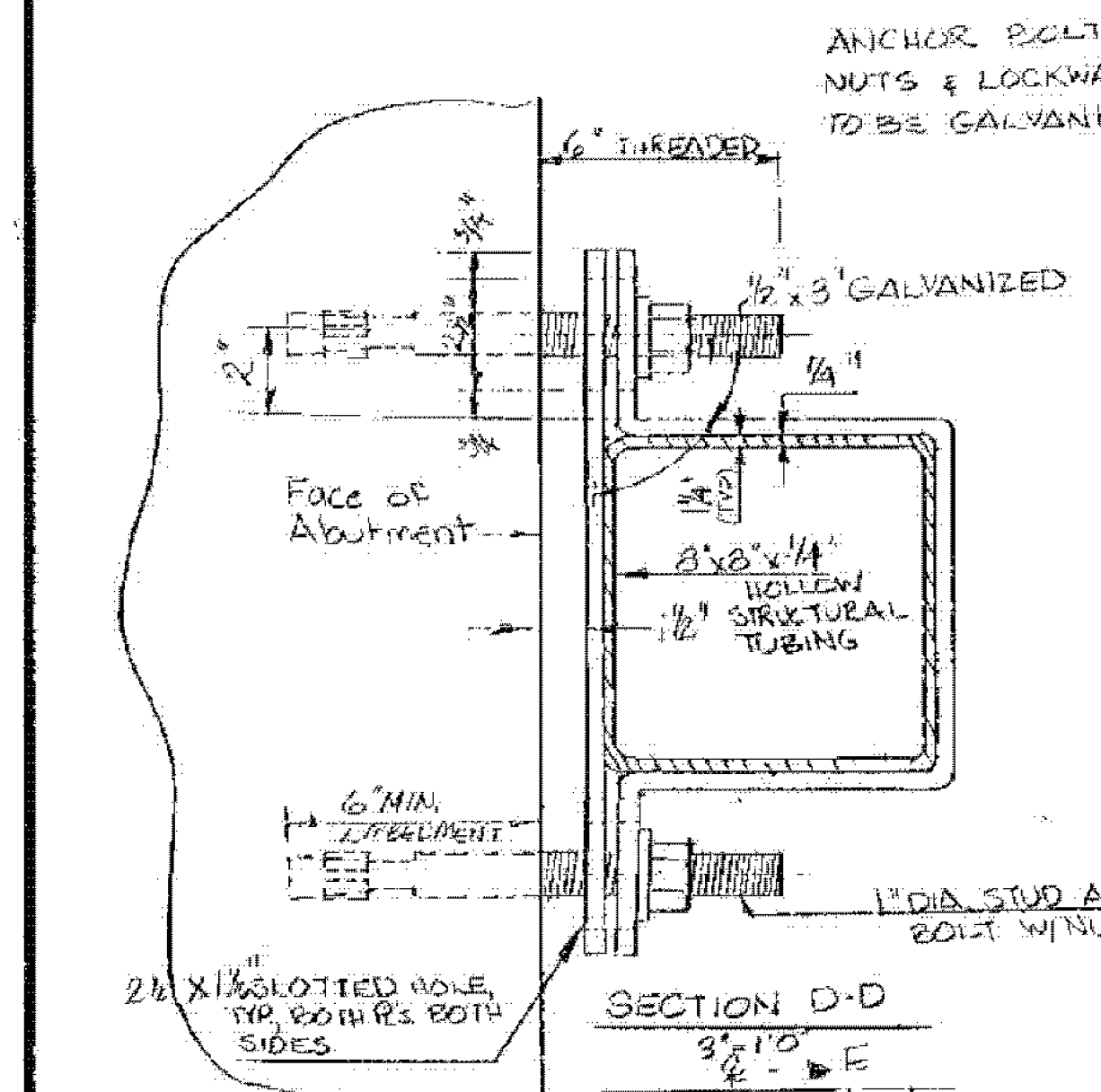


THIS FINGER JOINT REPLACED, SEE CHANGE OF DESIGN #2

TEMP	DIM IN'
0°	+1 1/2"
15°	+1"
30°	+1/2"
45°	0
60°	-1/2"
75°	-1"
90°	-1 1/2"
105°	-2"



NOTES

1. THE EXPANSION DAM IS TO BE SHOP ASSEMBLED AND TEMPORARILY FASTENED TOGETHER BY MEANS OF A BOLTED CONNECTION FOR TRANSPORTATION AS A UNIT TO THE FIELD.
2. THE FINAL FINISH SURFACE OF THE EXPANSION JOINT SHALL BE COVERED DURING THE PLACING OF THE BRIDGE DECK CONCRETE.
3. ALL STEEL COMPONENTS SHALL BE ASTM A528 UNLESS OTHERWISE NOTED.
4. ALL CURB R.E. AND WELDED STUDS SHALL BE INCLUDED IN THE COST PER LINEAL FOOT BID FOR ITEM 314.36. ELASTOMERIC EXPANSION DAM (C-MOVEMENT). THE CURB R.E. SHALL BE GALV. PAINTED GRAY IN COLOR (FEDERAL COLOR NO. 24993) IN ACCORDANCE WITH THE SPECIAL PROVISION 708.09, PAINTING HOT DIP GALV. STEEL.
5. THE 2 1/4" THICK FINGER PLATES SHALL BE CUT FROM 2 1/4" x 26" R AND FURNISHED IN 2 EQUAL LENGTHS. THE 1 3/8" x 6" x 1" SHALL BE FURNISHED IN CONTINUOUS LENGTHS. THE FABRIC SEAL SHALL BE CONTINUOUS PREFORMED FABRIC MATERIAL CONFORMING WITH SECTION 707.13.
6. THREE COATS OF PAINT (IN ACCORDANCE WITH SECTION 513) SHALL BE APPLIED TO THE INTERIOR SURFACE OF THE EXPANSION JOINT.
7. THE HOPPER AND DOWN SPOUT SHALL BE A-36 GALV AND PAINTED IN ACCORDANCE WITH THE SPECIAL PROVISION 708.09, "PAINTING OF HOT DIP GALVANIZED STEEL." PAYMENT FOR THE HOPPER AND DOWN SPOUT SHALL BE AT THE UNIT PRICE BID PER POUND FOR ITEM 506.91, STRUCTURAL STEEL, (COLOR: BRONZE 20040).
8. WHERE INDICATED EPOXY BONDING COMPOUND CONFORMING TO SECTION 616 SHALL BE APPLIED. PAYMENT TO BE INCLUDED IN THE UNIT PRICE FOR CONCRETE CLASS A, ITEM 501.20.
9. DRIP BEADS OF 1/4" x 9" TWO PLY POLYESTER MATERIAL SHALL BE CEMENTED TO THE CENTER OF THE FABRIC TROUGH, AT EACH SIDE OF THE OUTLETS, WITH AN ADHESIVE APPROVED BY THE MANUFACTURER.

STATE OF VERMONT AGENCY OF TRANSPORTATION		-91 BRIDGES 81B	
		WATERFORD - ST. JOHNSBURY IM MEMB(32) SHEET 35 OF 43 FOR REFERENCE ONLY	
TOWN OF	WATERFORD	Bridge No.	13
HIGHWAY NO.	I 93	Log Sta.	
RAMP W. to S. over I 91 NB & SB & RAMP S. to E.		Surv. Sta.	RAMP WAS 23
EXPANSION JOINT DETAILS			
Designed by	D. BURLEY	Drawn by	M. HEALD
Checked by	G.V. SPILAK	Bridge Design Supervisor	R.S. HAUPT
PROJECT CONTRACT NO.	WATERFORD	PROJECT NO.	I 93-1(3)
Bridge Sheet No.	BR1817	Sheet	176 of 550

BR 6