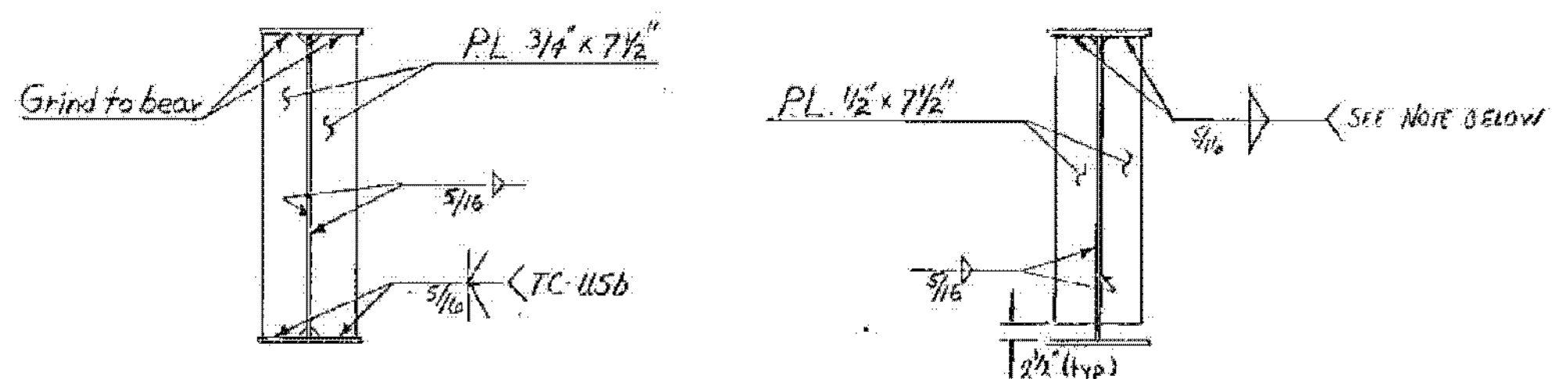


TYPICAL SECTION
SCALE: 1" = 1'-0"

NOTE: SECTION IS LOOKING BACK IN STATIONING

For further Scupper Details
See 3rd SH. SCB-D6-73
For further Drainspout Details
See BR 1819

For Deck End Details see detail A on Br 1807 & Br 1811.



ABUTMENT & PIER
BEARING STIFFENER

INTERMEDIATE
CONNECTION PLATE

Scale 1/2" = 1'-0"

Note:
Use 5/16 fillet weld for compression flange on intermediate crossframe connections. The compression flange is the bottom flange for the first set of connection plates on each side of piers 1 and 2; and on Abut 2 side of pier 3. The compression flange is the top flange for the remaining connection plates.

I-91 BRIDGES 81B	
WATERFORD - ST. JOHNSBURY	
IM MEMB(32)	
SHEET 29 OF 43	
FOR REFERENCE ONLY	

STATE OF VERMONT	
AGENCY OF TRANSPORTATION	
TOWN OF WATERFORD	Bridge No. 18
HIGHWAY NO. I 93	Log Sta.
Surv. Sta. RAMP W-S 46+0	
TYPICAL SECTION	
RAMP W. to E. over I 91 N.B. & S.B. RAMP S. to E.	
Designed by D BURLEY	Drawn by M. HEALD
Checked by A. ELWOOD date 7-80	Bridge Design Supervisor R. S. HAUPT date 7/80
PROJECT CONTRACT 3 WATERFORD	PROJECT NO. I 93-1(3)
Bridge Sheet No. BR 1807	Sheet 166 of 550