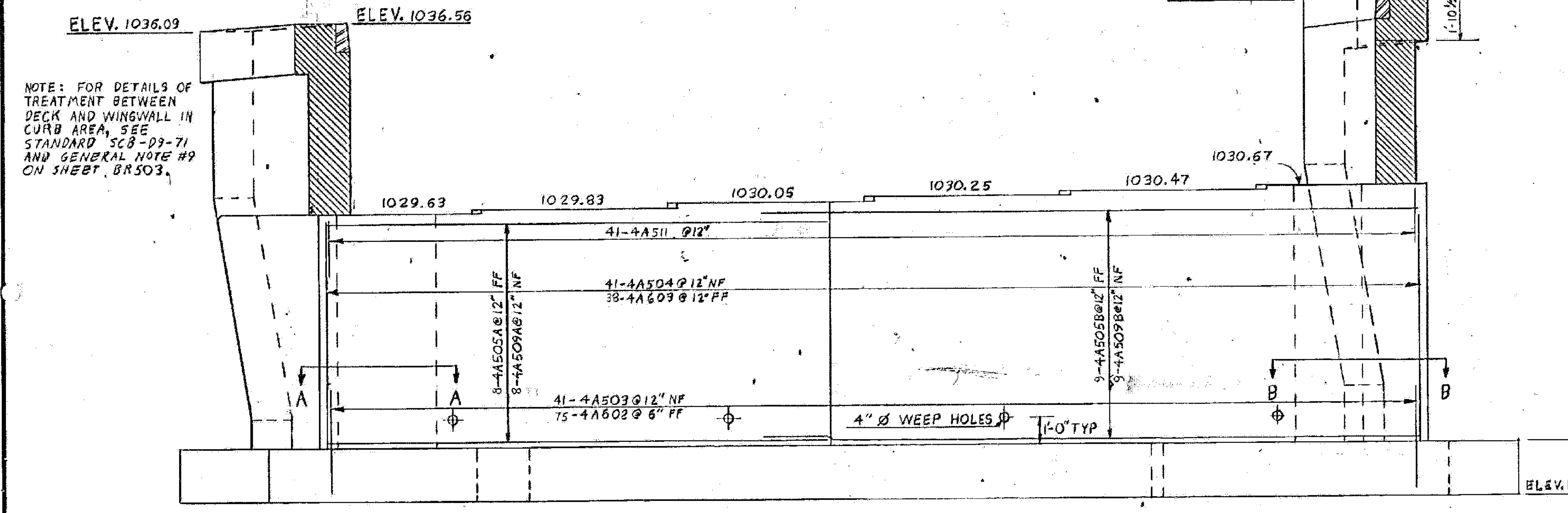
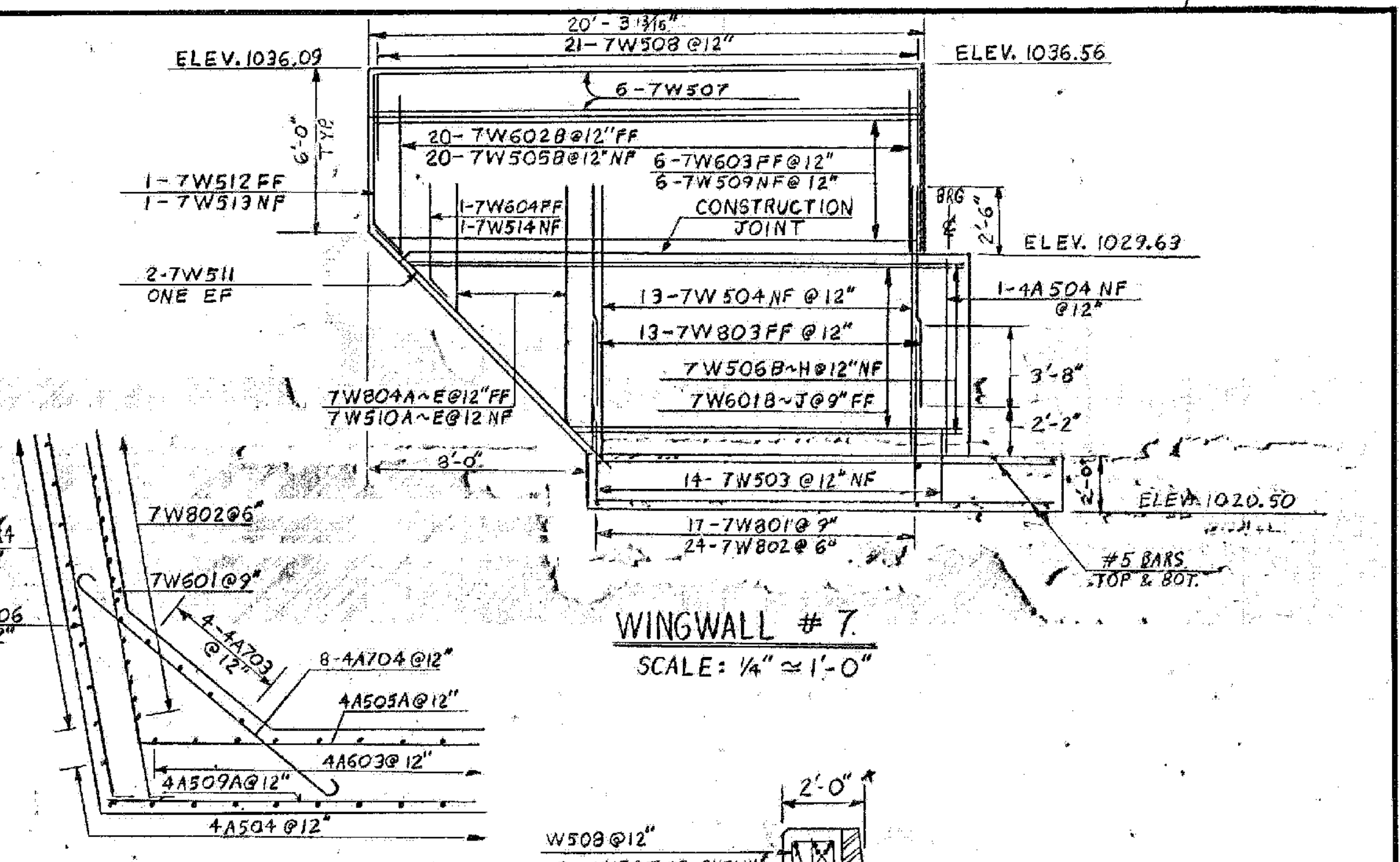


ABUTMENT #4 PLAN
SCALE: 3/8" = 1'-0"

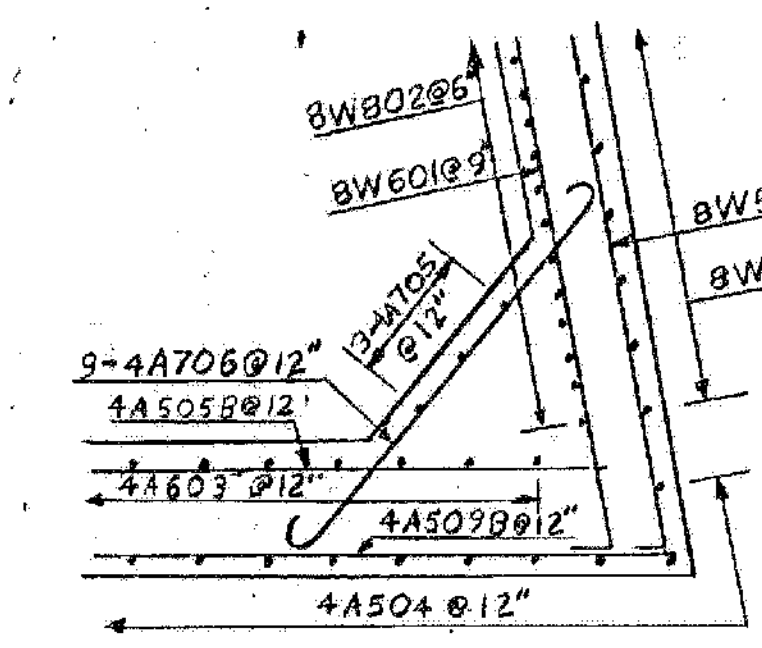


ABUTMENT #4 ELEVATION
SCALE: 3/8" = 1'-0"

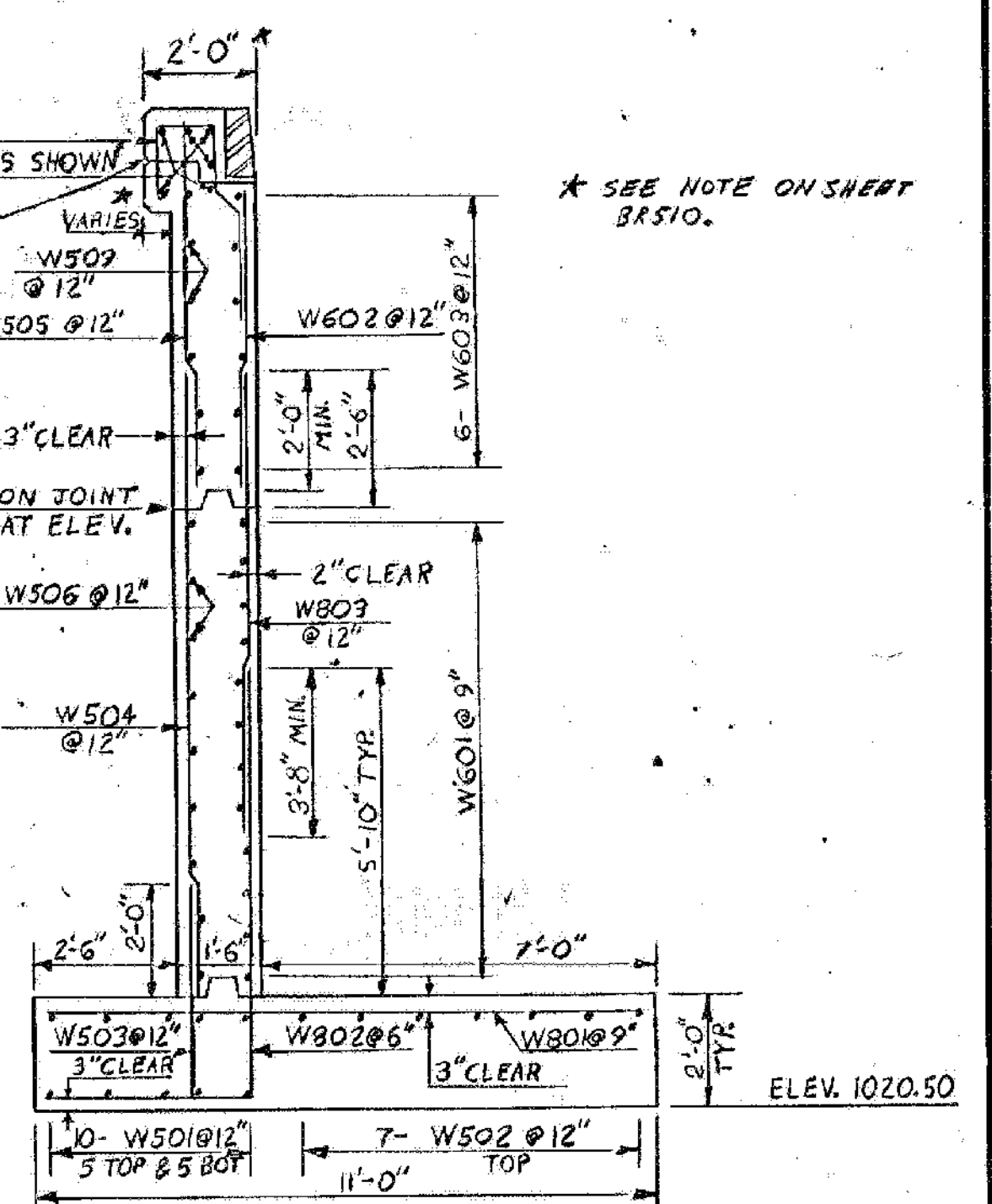


WINGWALL #7
SCALE: 1/4" = 1'-0"

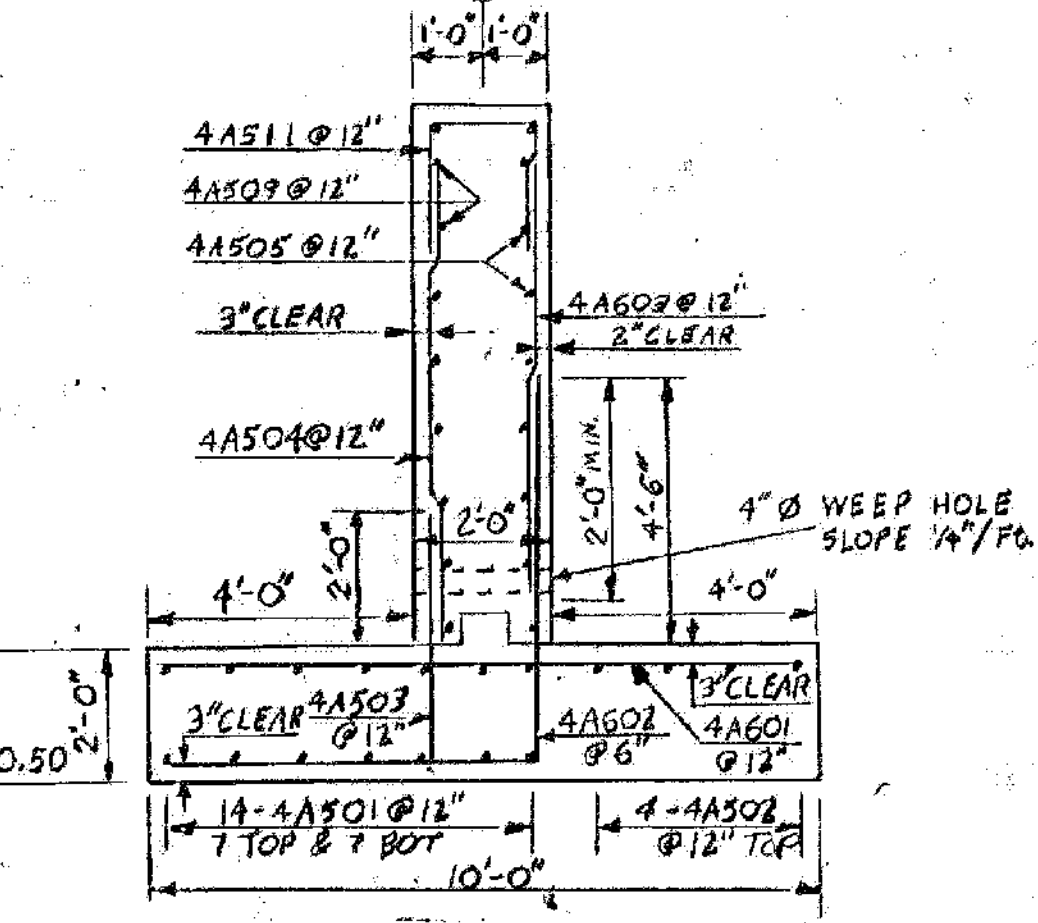
SECTION A-A
SCALE: 3/8" = 1'-0"



SECTION B-B
SCALE: 3/8" = 1'-0"



TYPICAL WINGWALL SECTION
SCALE: 3/8" = 1'-0"



ABUTMENT #4 - TYPICAL SECTION
SCALE: 3/8" = 1'-0"

NOTE: FOR DETAILS OF TREATMENT BETWEEN DECK AND WINGWALL IN CURB AREA, SEE STANDARD SCB-D9-71 AND GENERAL NOTE #9 ON SHEET BR503.

* SEE NOTE ON SHEET BR510.

I-93 BRIDGES 3N&S
WATERFORD
IM MEMB(31)
SHEET 33 OF 48
FOR REFERENCE ONLY

STATE OF VERMONT	
AGENCY OF TRANSPORTATION	
TOWN OF WATERFORD	Bridge No. B5
HIGHWAY NO. I93	Log Sta.
I93 SOUTHBOUND OVER TH 12	
ABUTMENT #4 & WINGWALL #7 DETAILS	
Designed by S.G. FARNSWORTH	Drawn by S.G. FARNSWORTH
Checked by G. ROGERS	Bridge Design Supervisor
date 6/80	F.W. Balkum date 7/80
PROJECT WATERFORD	PROJECT NO. I93-1(3) 9/2
Bridge Sheet No. BR514	Sheet 135 of 531