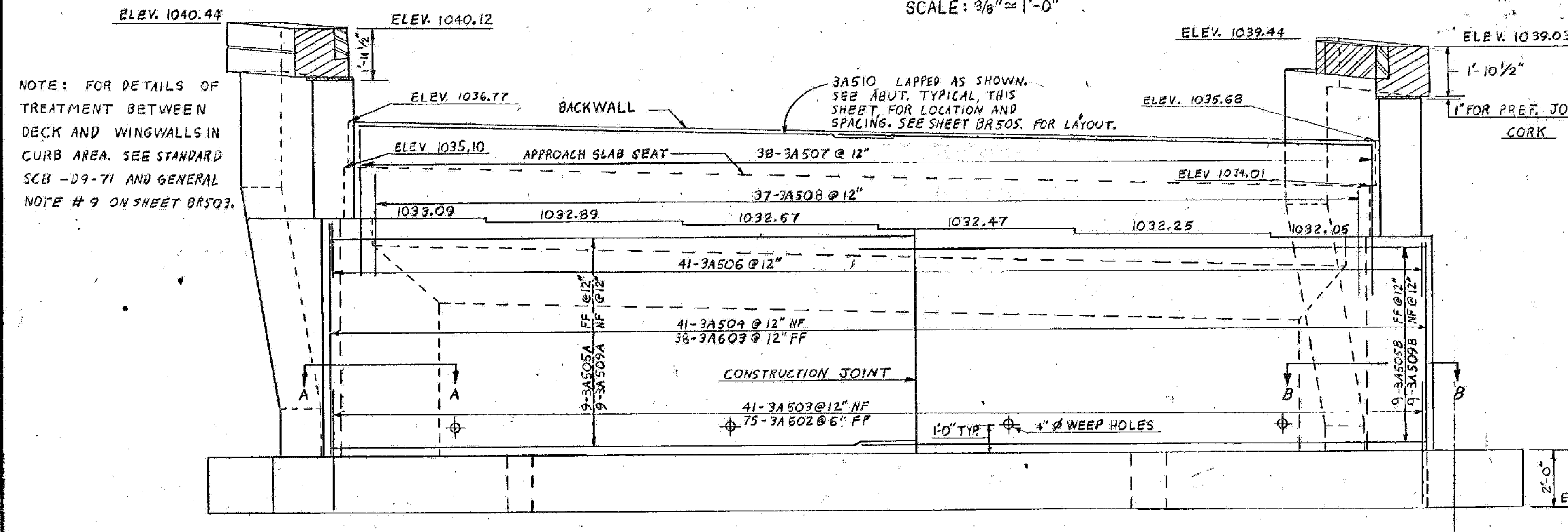


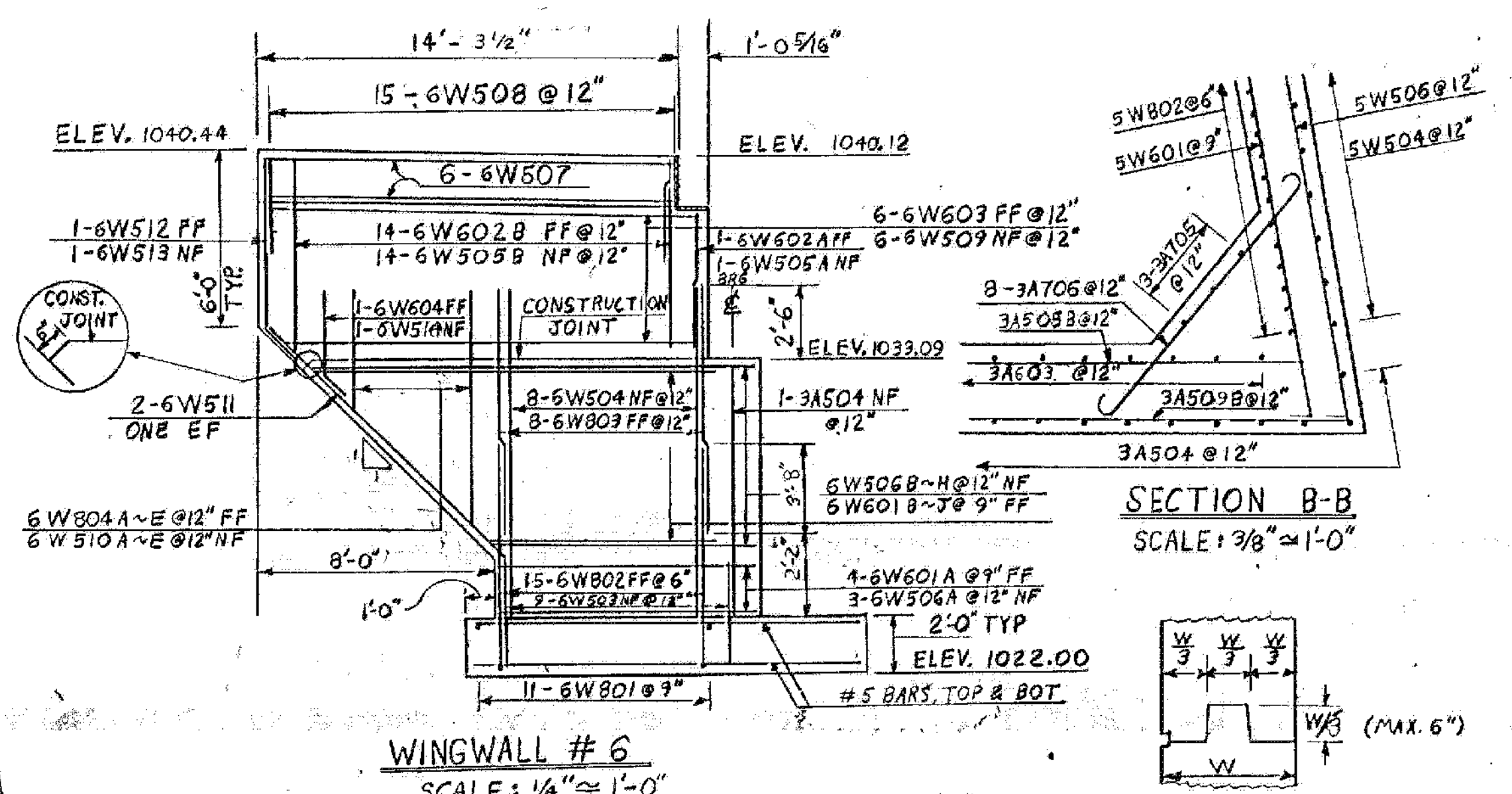
ABUTMENT #3 PLAN
SCALE: 3/8" = 1'-0"



ABUTMENT #3 ELEVATION
SCALE: 3/8" = 1'-0"

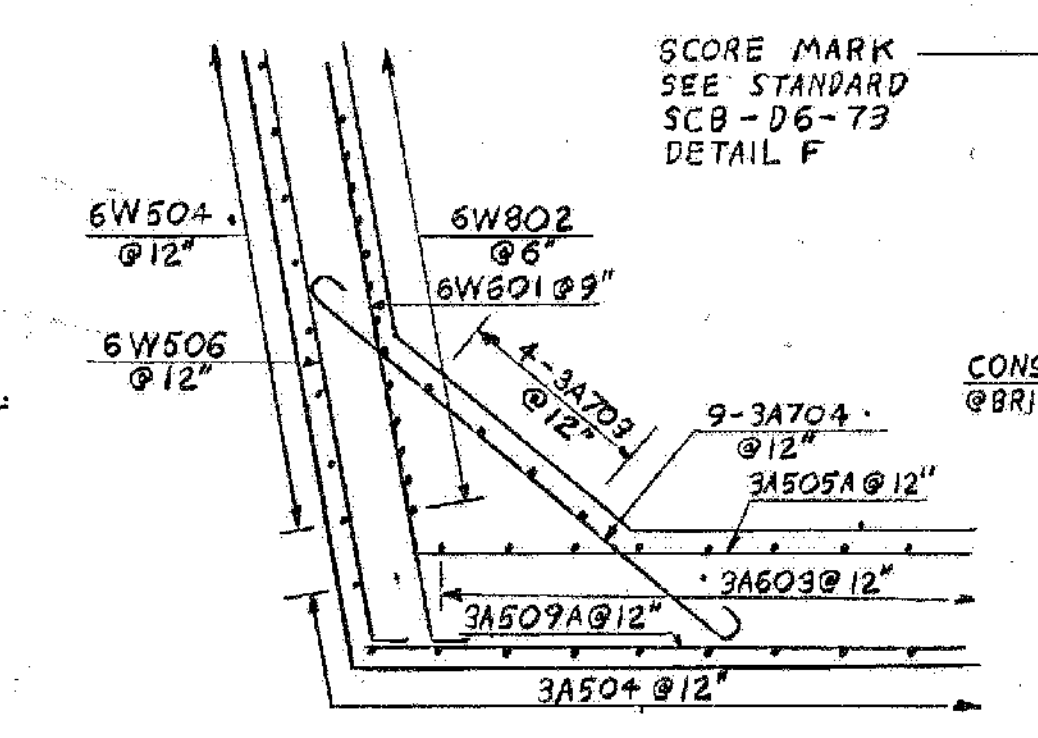
NOTE: FOR DETAILS OF TREATMENT BETWEEN DECK AND WINGWALLS IN CURB AREA. SEE STANDARD SCB-D9-71 AND GENERAL NOTE #9 ON SHEET BR503.

3A510 LAPPED AS SHOWN. SEE ABUT. TYPICAL. THIS SHEET FOR LOCATION AND SPACING. SEE SHEET BR505 FOR LAYOUT.

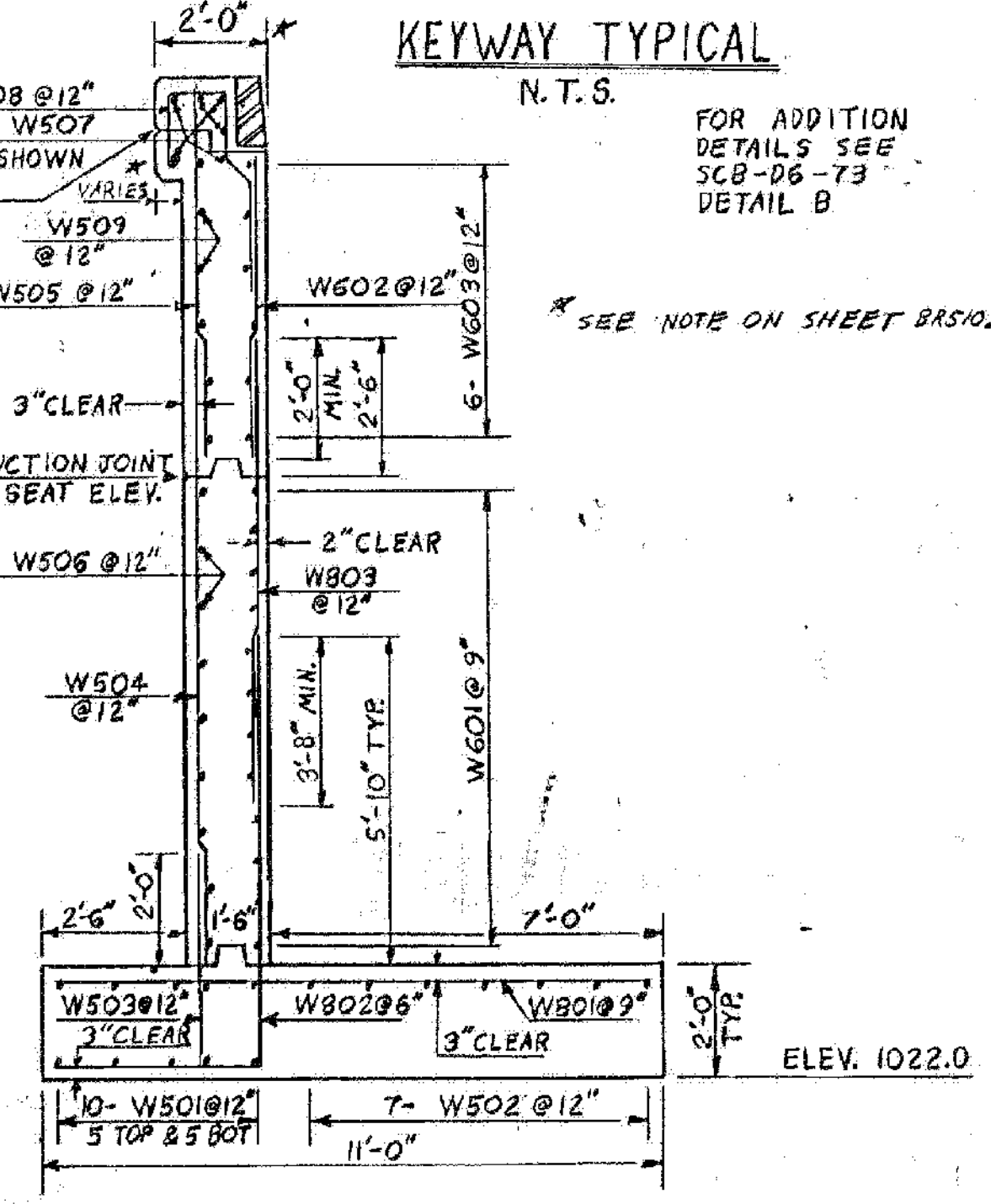


WINGWALL #6
SCALE: 1/4" = 1'-0"

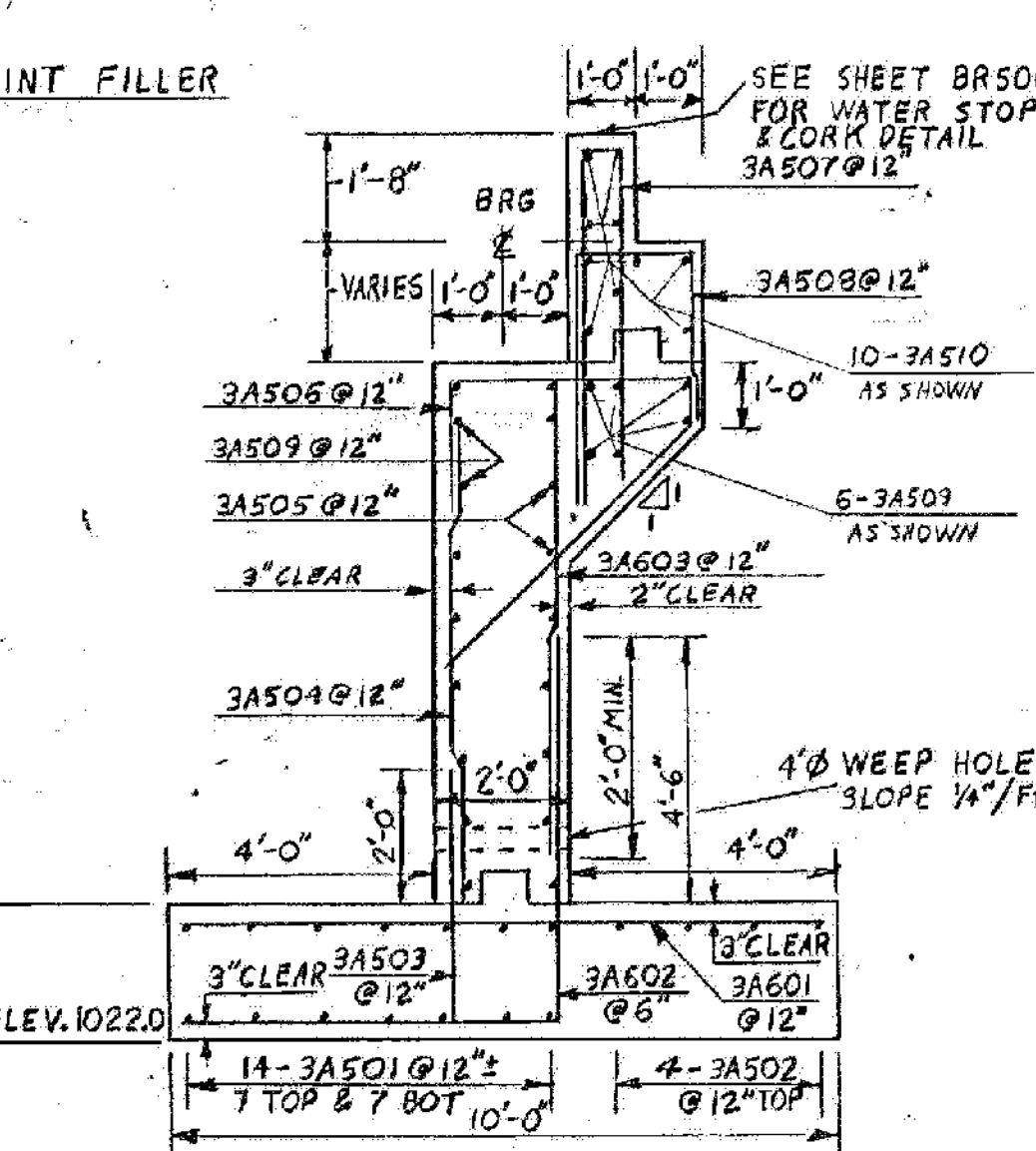
SECTION B-B
SCALE: 3/8" = 1'-0"



SECTION A-A
SCALE: 3/8" = 1'-0"



TYPICAL WINGWALL SECTION
SCALE: 3/8" = 1'-0"



ABUTMENT #3 - TYPICAL SECTION
SCALE: 3/8" = 1'-0"

KEYWAY TYPICAL
N.T.S.
FOR ADDITION DETAILS SEE SCB-D6-73 DETAIL B
* SEE NOTE ON SHEET BR503.

93 BRIDGES 3N&S
WATERFORD
IM MEMB(31)
SHEET 32 OF 48
FOR REFERENCE ONLY

STATE OF VERMONT	
AGENCY OF TRANSPORTATION	
TOWN OF WATERFORD	Bridge No. B5
HIGHWAY No. I 93	Log Sta.
I93 SOUTHBOUND OVER TH.12	
ABUTMENT #3 & WINGWALL #6 DETAILS	
Designed by S.G. FARNSWORTH	Drawn by S.G. FARNSWORTH
Checked by G. ROGERS	Bridge Design Supervisor
date 6/80	FWY. BolKum date 7/80
PROJECT WATERFORD	PROJECT NO. I93-1(3) 92
Bridge Sheet No. BR 513	Sheet 134 of 531