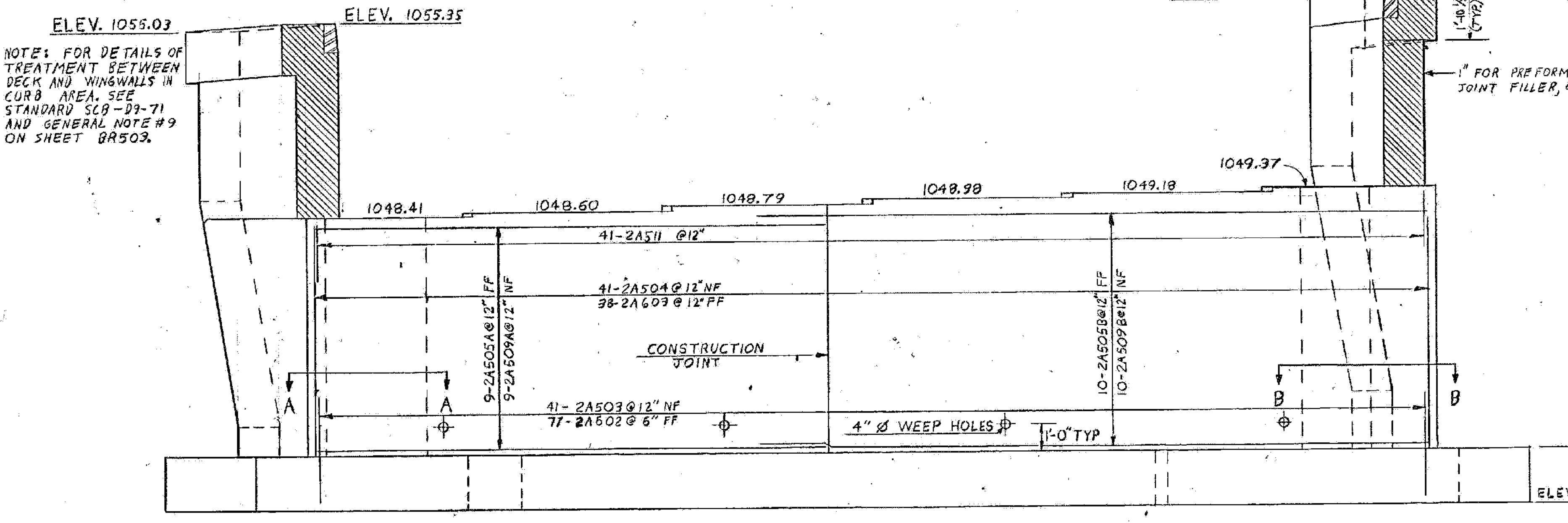
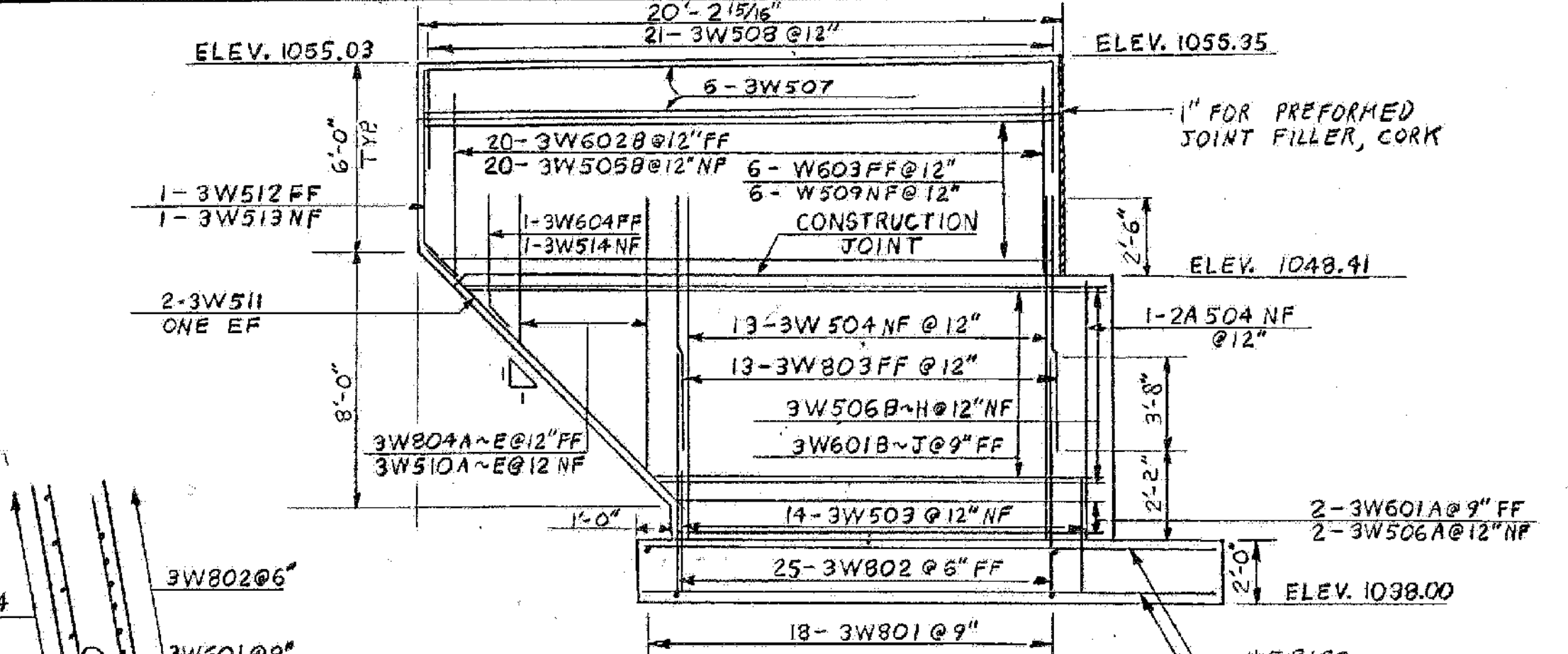


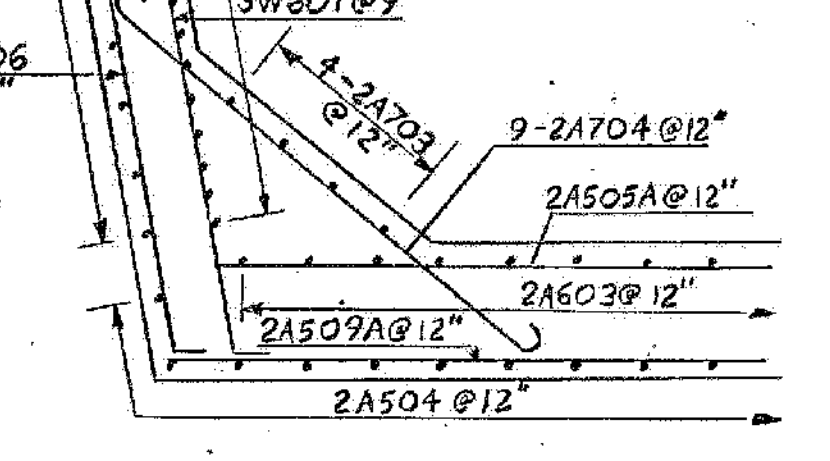
ABUTMENT # 2 PLAN
SCALE: 3/8" = 1'-0"



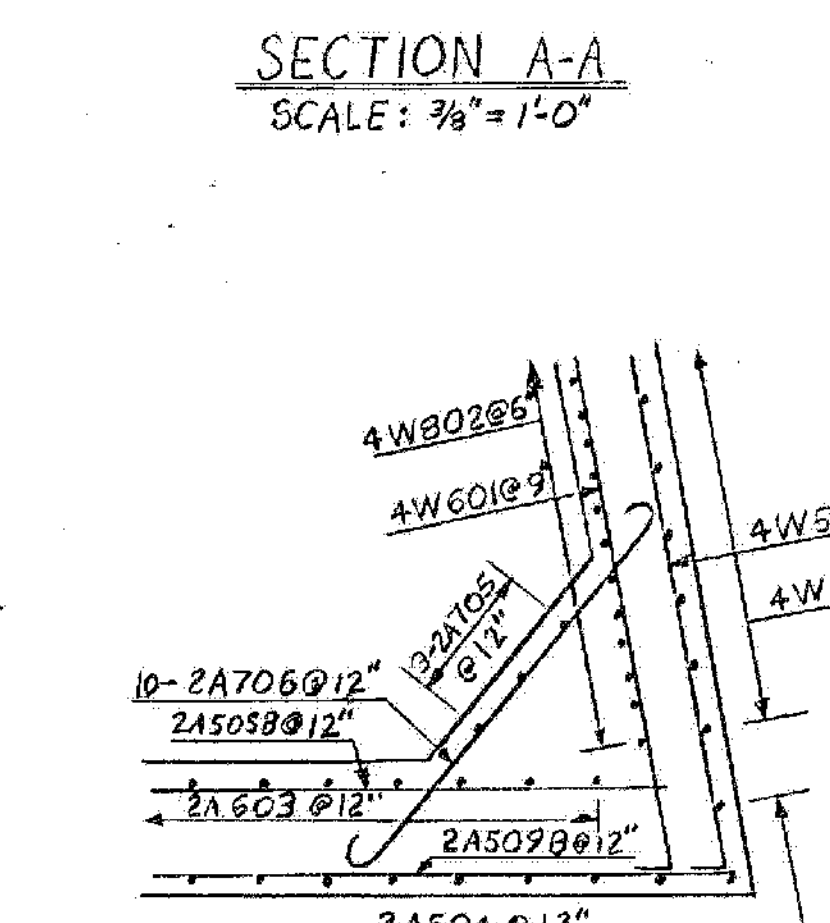
ABUTMENT # 2 ELEVATION
SCALE: 3/8" = 1'-0"



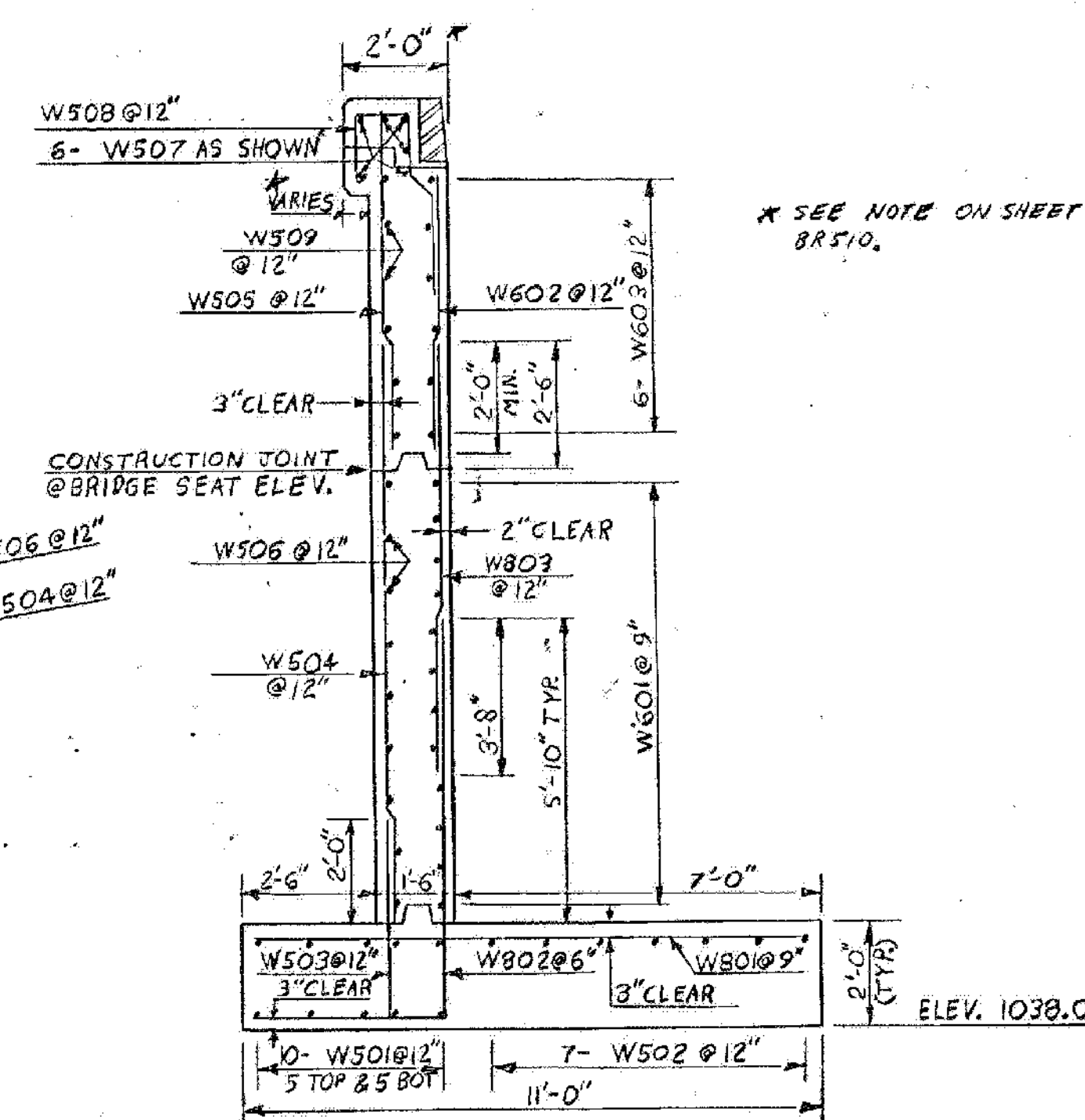
WINGWALL # 3
SCALE: 1/4" = 1'-0"



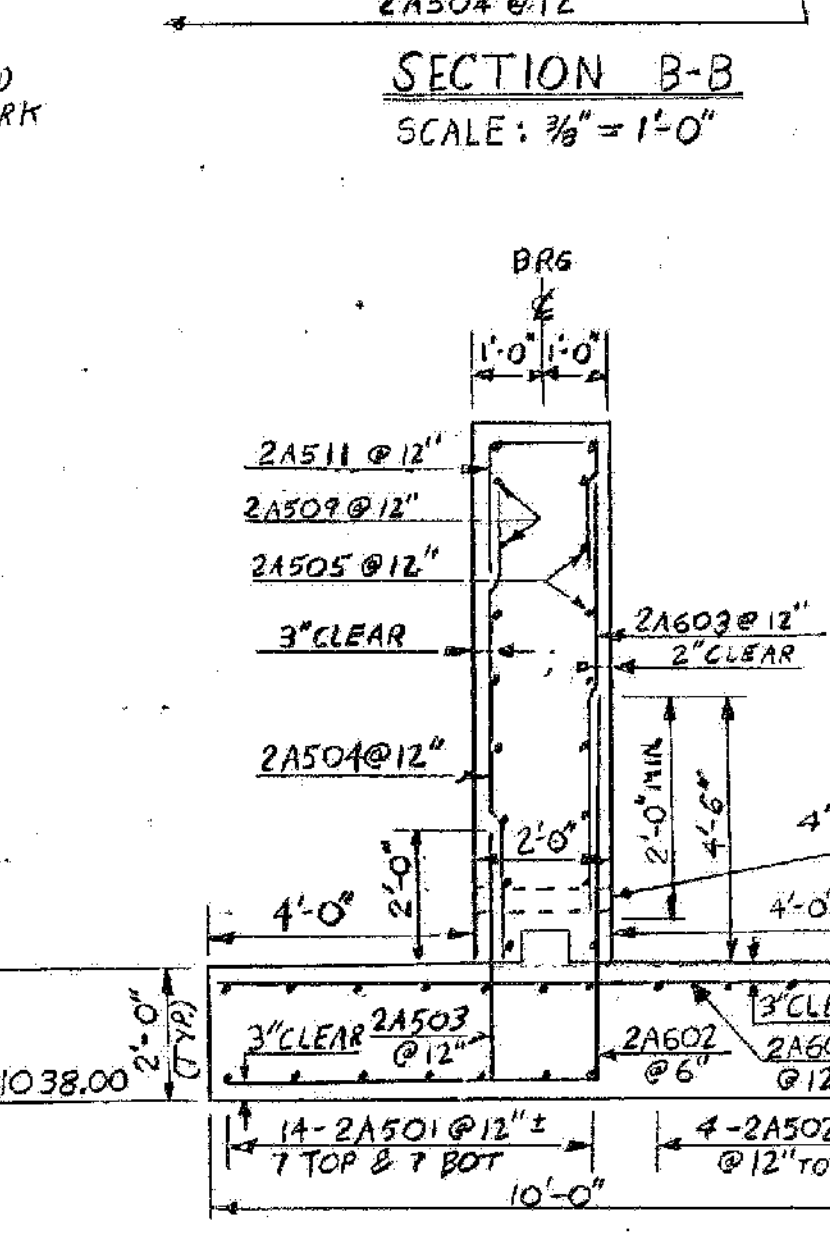
SECTION A-A
SCALE: 3/8" = 1'-0"



SECTION B-B
SCALE: 3/8" = 1'-0"



TYPICAL WINGWALL SECTION
SCALE: 3/8" = 1'-0"



ABUTMENT # 2 - TYPICAL SECTION
SCALE: 3/8" = 1'-0"

1-93 BRIDGES 3N&S
WATERFORD
IM MEMB(31)
SHEET 31 OF 48
FOR REFERENCE ONLY

STATE OF VERMONT	
AGENCY OF TRANSPORTATION	
TOWN OF WATERFORD	Bridge No. B5
HIGHWAY NO. I 93	Log Sta. Surv. Sta. 251+70
NORTHBOUND OVER TH 12	
ABUTMENT # 2 & WINGWALL # 3 DETAILS	
Designed by S.G. FARNSWORTH	Drawn by S.G. FARNSWORTH
Checked by G. ROGERS	Bridge Design Supervisor
date 6/80	F.W. Bolkum date 7/80
PROJECT WATERFORD	PROJECT NO. I 93-1(3) 1/2
Bridge Sheet No. BR 511	Sheet 132 of 531