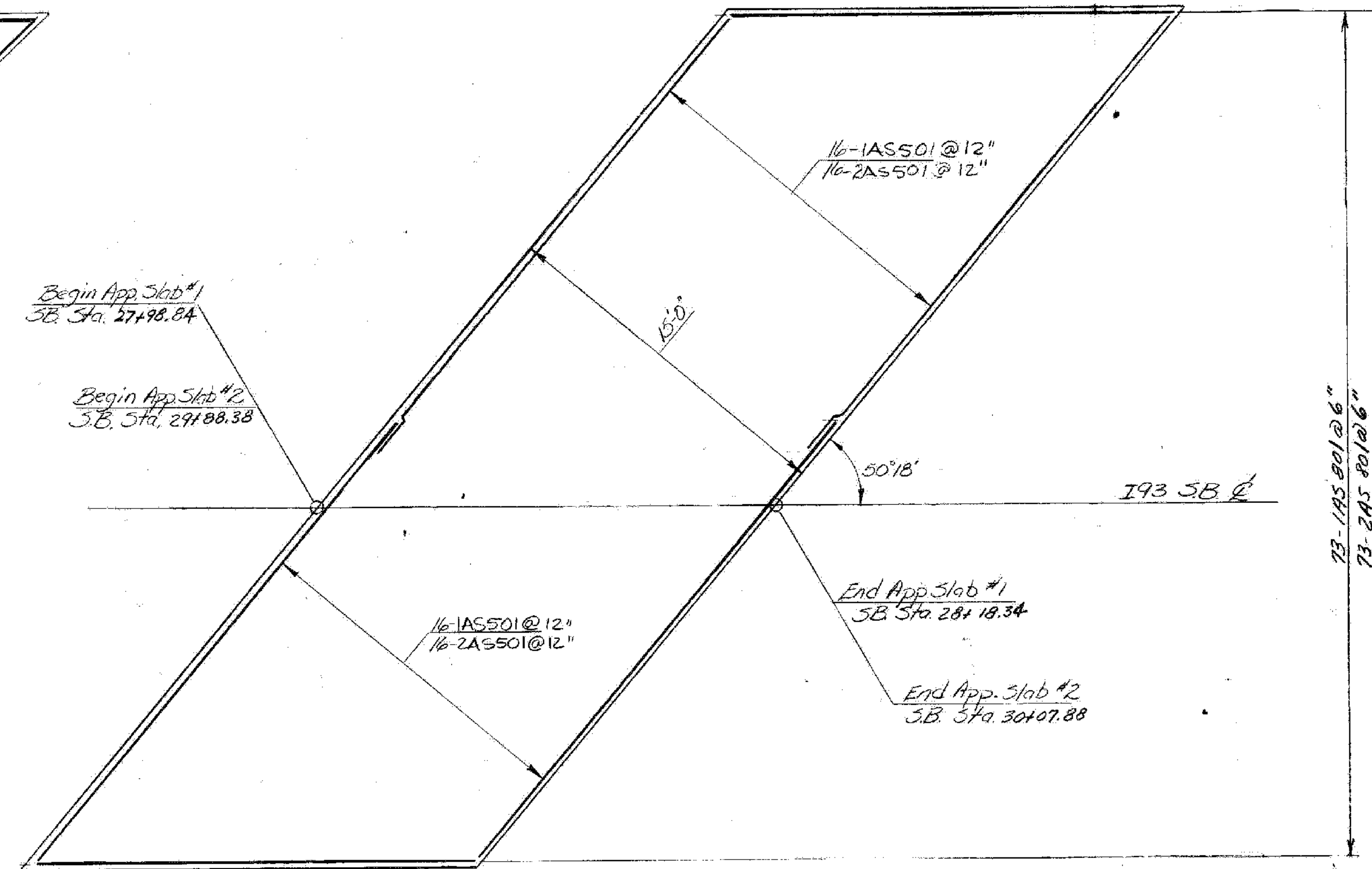
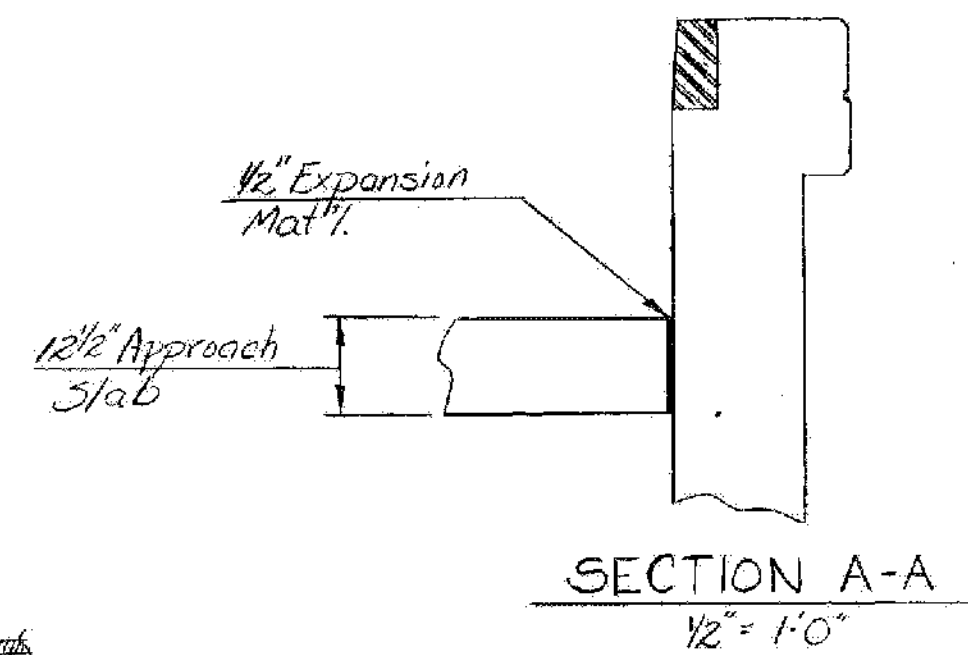


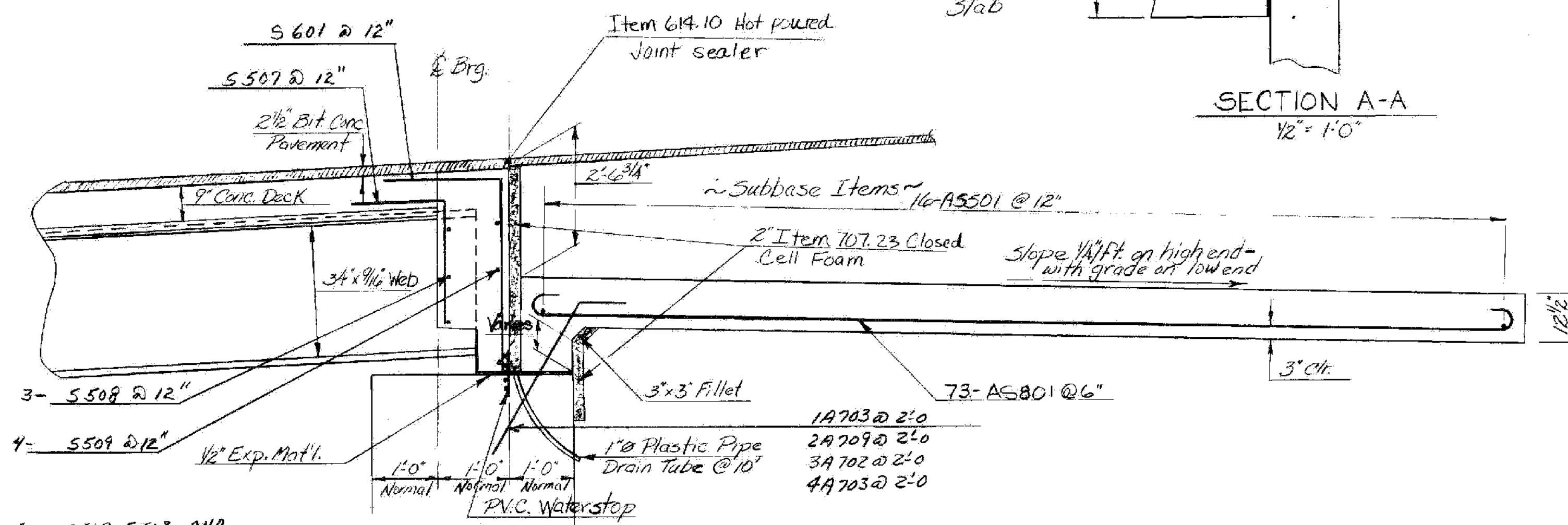
N.B. APPROACH SLABS PLAN
1/4" = 1'-0"



S.B. APPROACH SLABS PLAN
1/4" = 1'-0"



SECTION A-A
1/2" = 1'-0"



APPROACH SLAB SECTION FOR ABUTMENT 2, 3, & 4
1/2" = 1'-0"

FIELD CUT 5507, 5508, AND 5601 AS REQUIRED.

SEE BR III. FOR ABUTMENT 1 APPROACH SLAB

I-93 BRIDGES 1N&S
WATERFORD
IM MEMB(31)
SHEET 24 OF 48
FOR REFERENCE ONLY

STATE OF VERMONT	
AGENCY OF TRANSPORTATION	
TOWN OF WATERFORD	Bridge No. / NB & SB
HIGHWAY NO. I93	Log Sta.
I93 NB & SB Over Vt. Rte. 18	
N.B. & S.B. Approach Slab Details	
Designed by G. Spilak	Drawn by R. Whitcomb
Checked by A. Elwood date 6-18-80	Bridge Design Supervisor R.S. Haupt date 6-80
PROJECT CONTRACT 1	PROJECT NO. I93-1(3)
Waterford	156 of 179