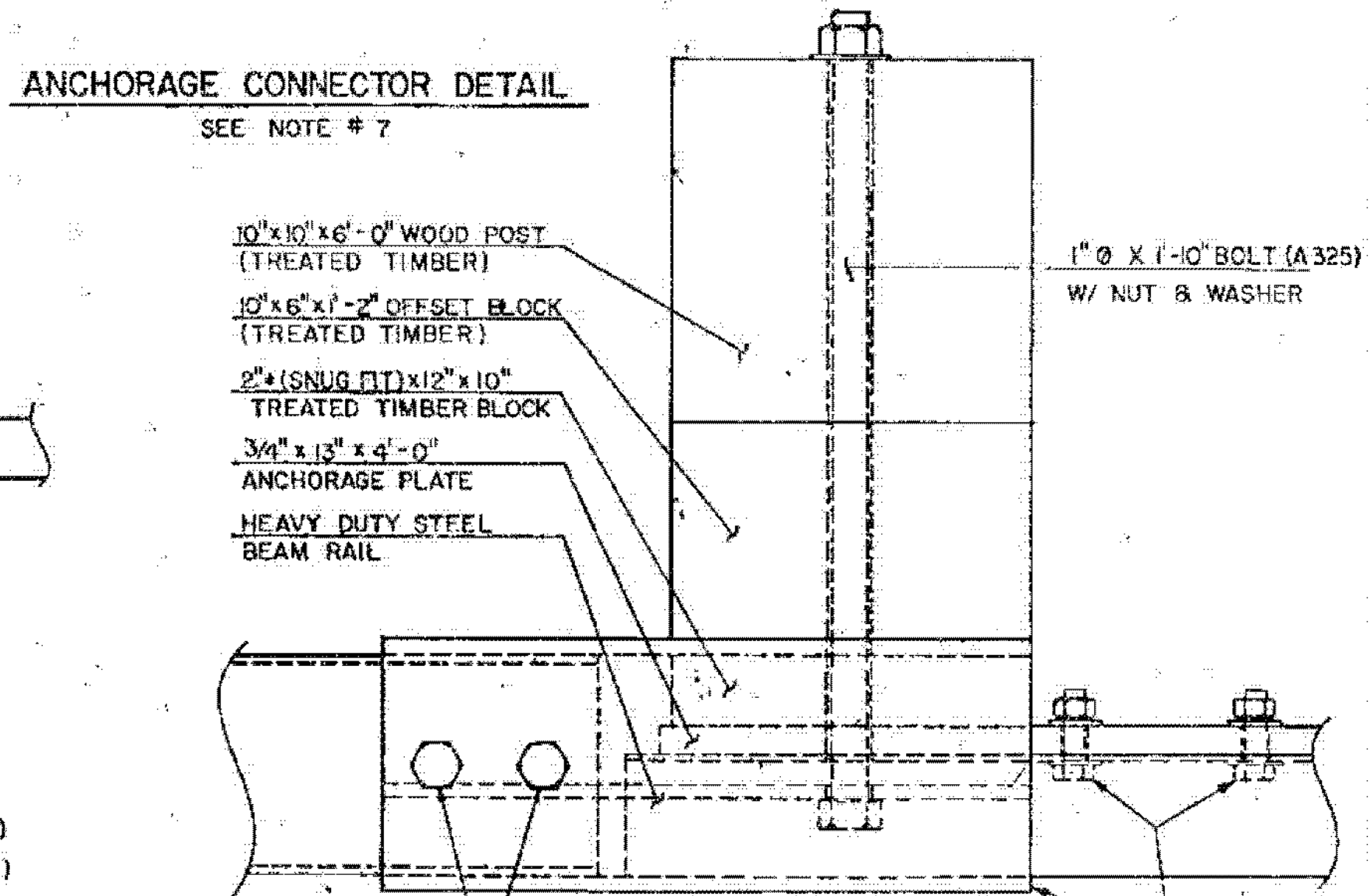
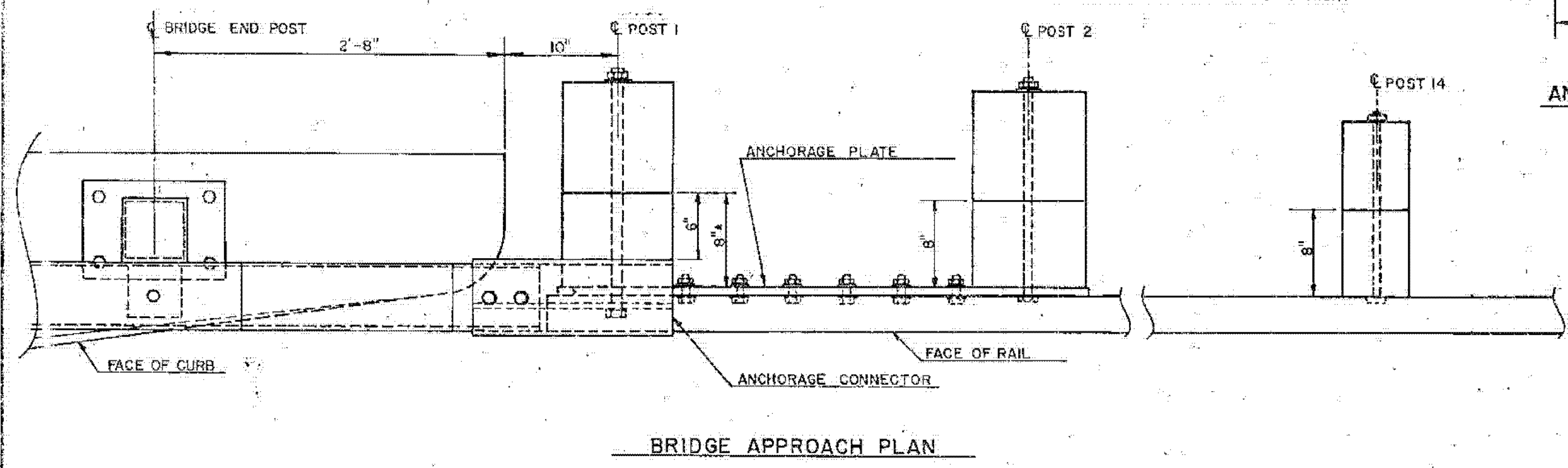
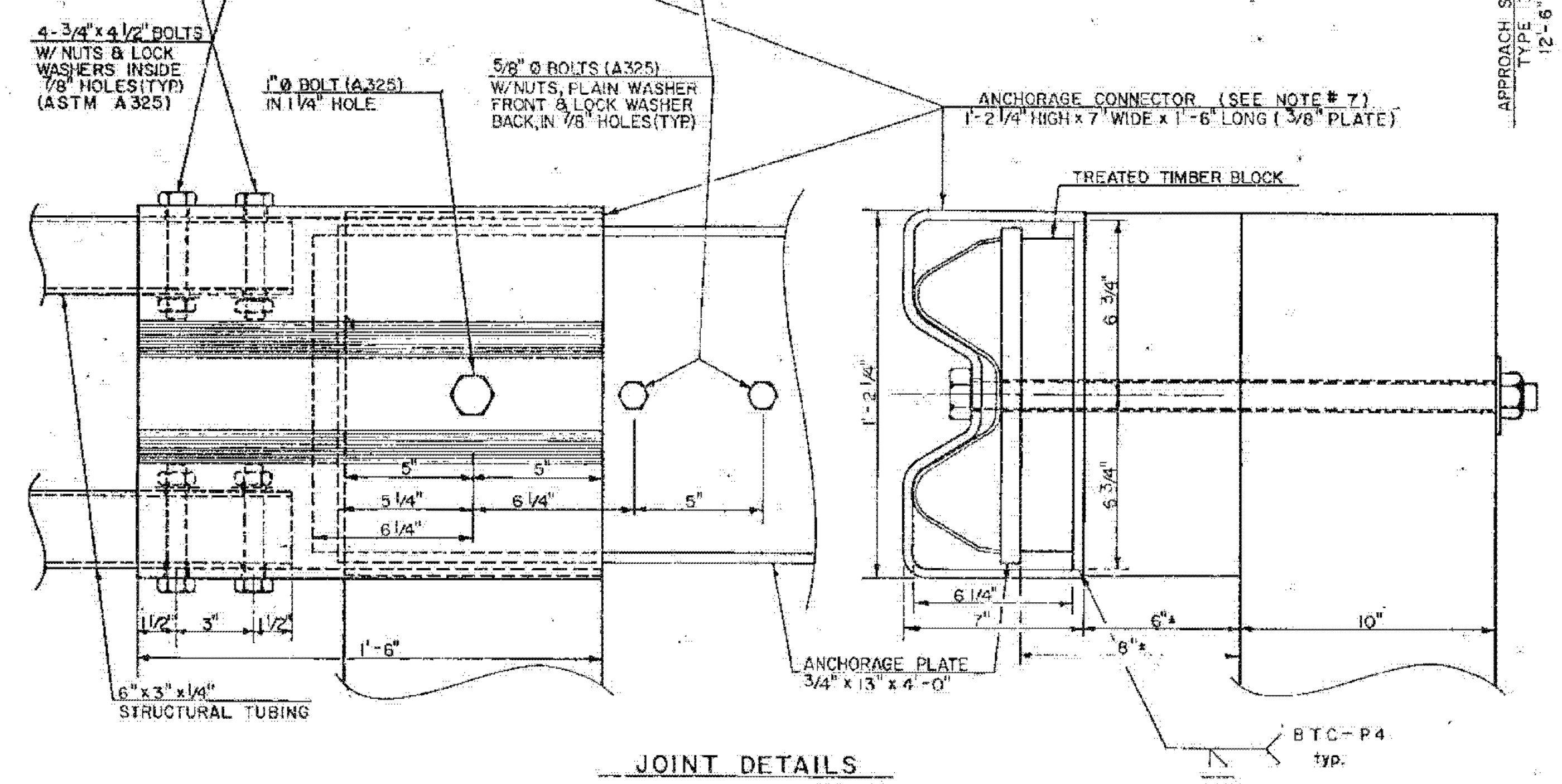
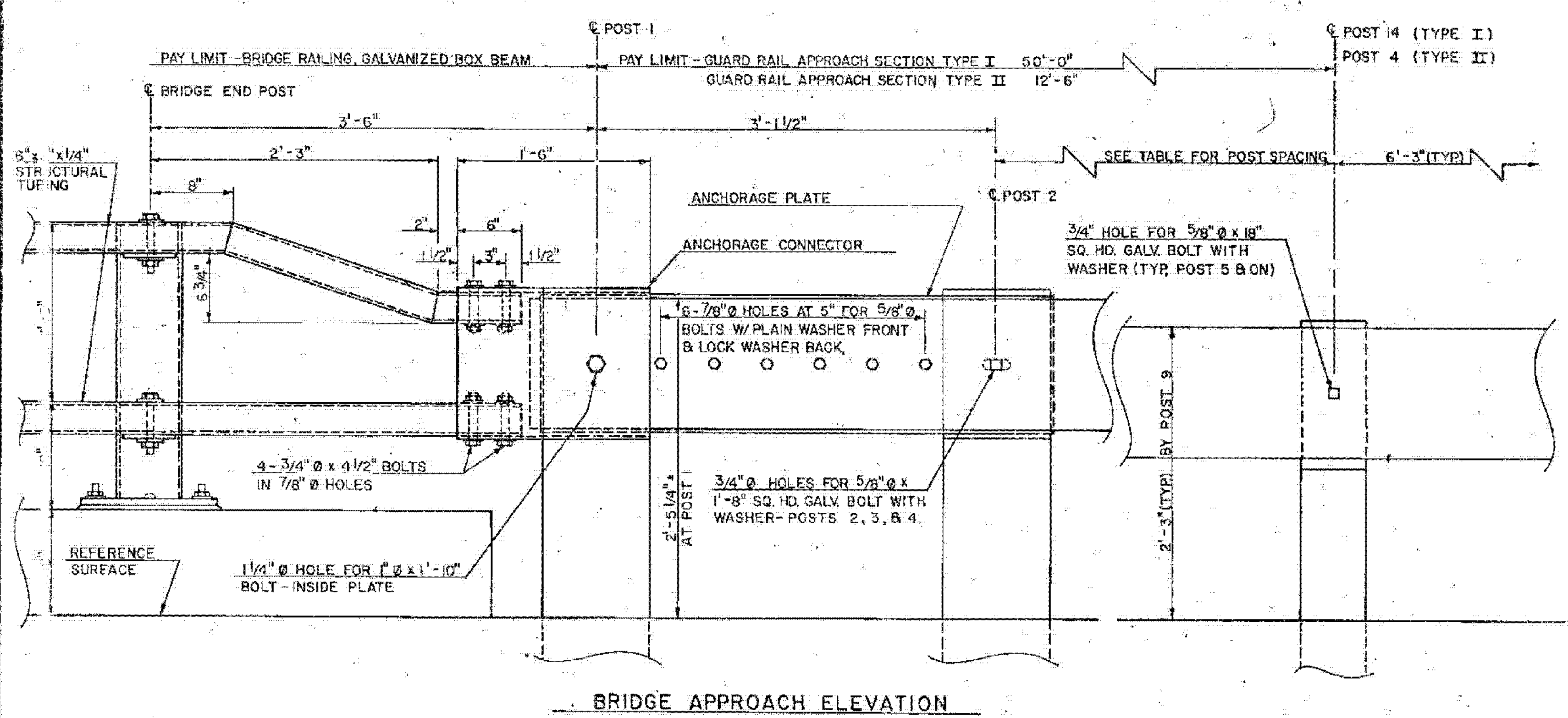


- NOTES**
1. REFER TO STANDARD G-1 FOR DETAILS OF APPROACH GUARD RAIL.
 2. APPROACH RAIL SPLICES SHALL LAP IN DIRECTION OF TRAFFIC FLOW.
 3. ANCHORAGE CONNECTOR AND ANCHORAGE PLATE SHALL BE ASTM A36 STEEL GALVANIZED TO ASTM A123 AFTER FABRICATION.
 4. REFER TO STANDARD SB-R4A-B2 FOR NOTES AND DETAILS OF BRIDGE RAILING.
 5. GUARD RAIL APPROACH SECTION-TYPE I & II SHALL INCLUDE ANCHORAGE PLATE, ANCHORAGE CONNECTOR, RAIL, POSTS, BLOCKS, AND ATTACHMENT HARDWARE.
 6. APPROACH RAILING SHALL BE HEAVY DUTY STEEL BEAM FOR 50'-0" FROM THE C. OF POST 1 FOR TYPE I AND 12'-6" FROM THE C. OF POST 1 FOR TYPE II.
 7. ALLOWABLE DIMENSIONAL TOLERANCE FOR BENT SECTIONS IS ±1/16 OF AN INCH.



GUARD RAIL APPROACH SECTION TYPE I			
POST NO.	POST SIZE	OFFSET BLOCK	SPACING
END POST			
1	10" x 10"	10" x 6"	3'-6"
2	10" x 10"	10" x 6"	3'-1 1/2"
3	10" x 10"	10" x 6"	3'-1 1/2"
4	10" x 10"	10" x 6"	3'-1 1/2"
5	8" x 8"	8" x 6"	3'-1 1/2"
6	8" x 8"	8" x 6"	3'-1 1/2"
7	8" x 8"	8" x 6"	3'-1 1/2"
8	8" x 8"	8" x 6"	3'-1 1/2"
9	6" x 8"	6" x 6"	3'-1 1/2"
10	6" x 8"	6" x 6"	4'-2"
11	6" x 8"	6" x 6"	4'-2"
12	6" x 8"	6" x 6"	4'-2"
13	6" x 8"	6" x 6"	6'-3"
14	6" x 8" (TYP)	6" x 6" (TYP)	6'-3" (TYP)

GUARD RAIL APPROACH SECTION TYPE II			
END POST	POST SIZE	OFFSET BLOCK	SPACING
1	10" x 10"	10" x 6"	3'-6"
2	10" x 10"	10" x 6"	3'-1 1/2"
3	8" x 8"	8" x 6"	4'-6 1/4"
4	8" x 8"	8" x 6"	6'-3" (TYP)



REVISIONS AND CORRECTIONS

1. ADDED TYPE II APPROACH DETAILS, AND RE-USED ANCHORAGE CONNECTOR DETAILS. R. HAAPT 9/7/83
2. ADDED DIMENSION TO POST NO. 1. R.S.H. 12-13-84
3. CHANGED WELD DESIGNATION FOR ANCHORAGE CONNECTOR. K.B.M. 3-30-88.

APPROVED:

DECEMBER 28, 1981
DATE

Arthur J. Goss
CHIEF OF DESIGN

W.M. Smith
STRUCTURES ENGINEER

S.J. Gane
DIRECTOR OF ENGINEERING AND CONSTRUCTION

GUARD RAIL APPROACH SECTION-TYPE I & TYPE II

VERMONT AGENCY OF TRANSPORTATION

STANDARD SB-R4B-82

SHEET 12A OF 48