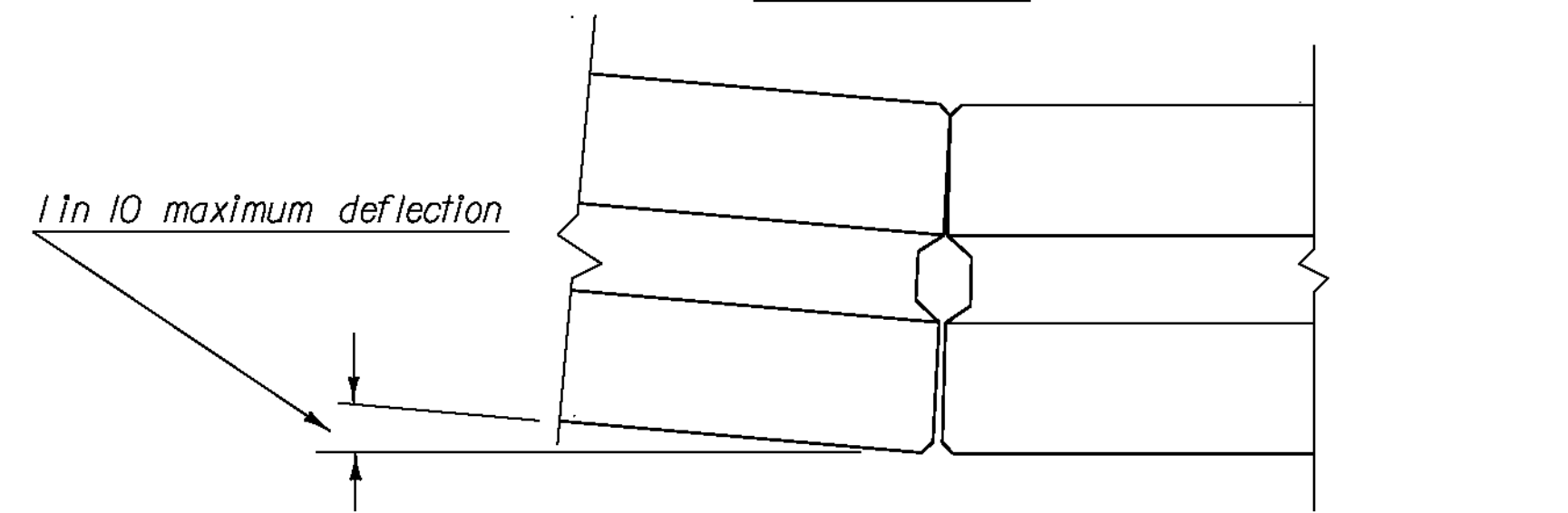


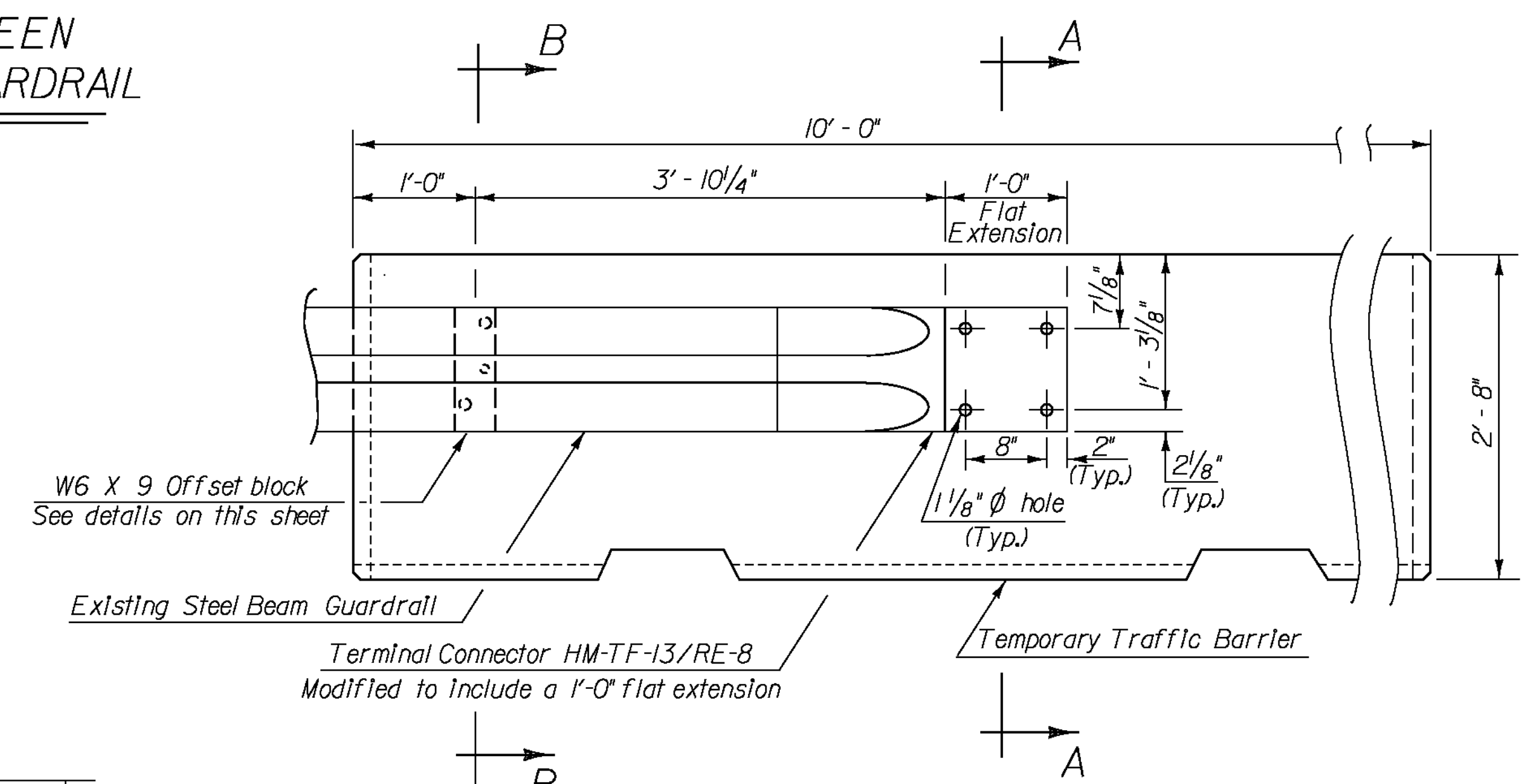
PLAN VIEW SHOWING POSITIVE CONNECTION BETWEEN TEMPORARY TRAFFIC BARRIER AND EXISTING GUARDRAIL

$\frac{1}{2}'' = 1' - 0''$



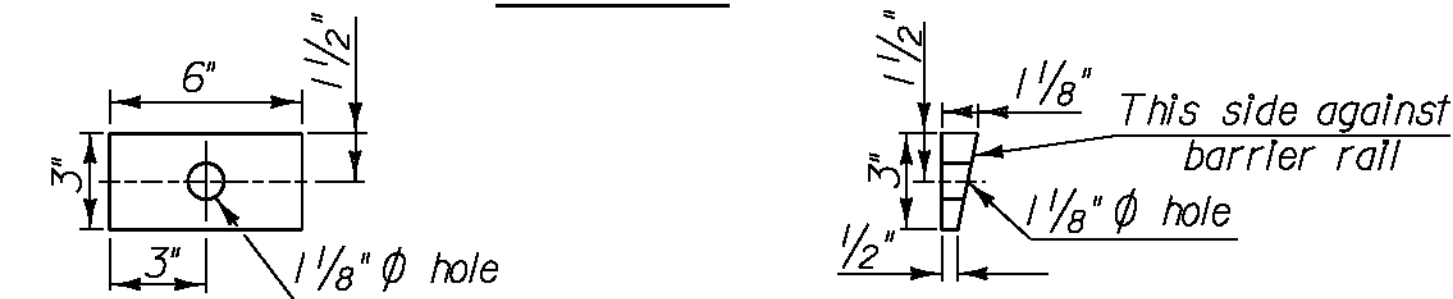
TEMPORARY TRAFFIC BARRIER DEFLECTION DETAIL

NTS



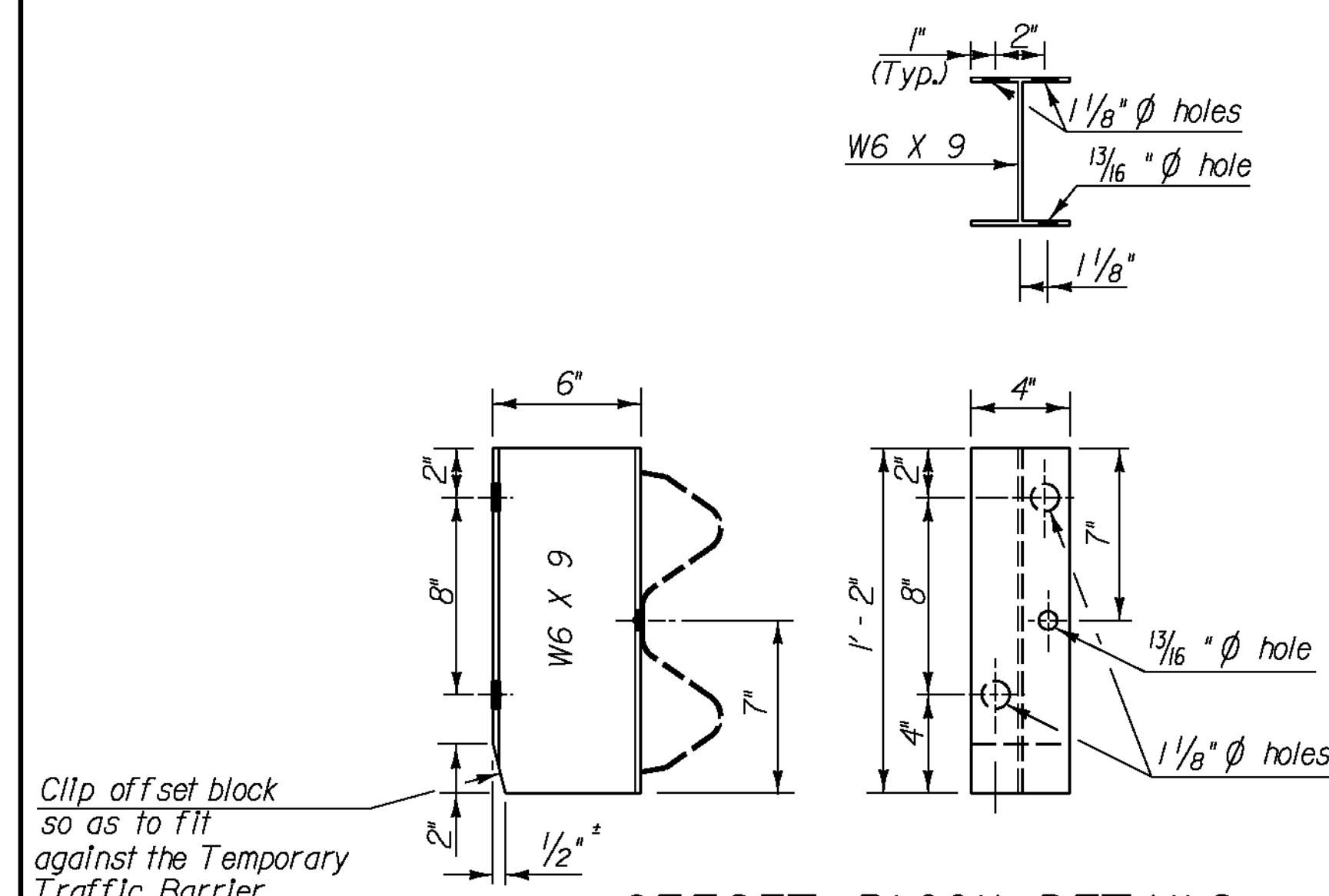
ELEVATION VIEW SHOWING POSITIVE CONNECTION BETWEEN TEMPORARY TRAFFIC BARRIER AND EXISTING GUARDRAIL

$1'' = 1' - 0''$



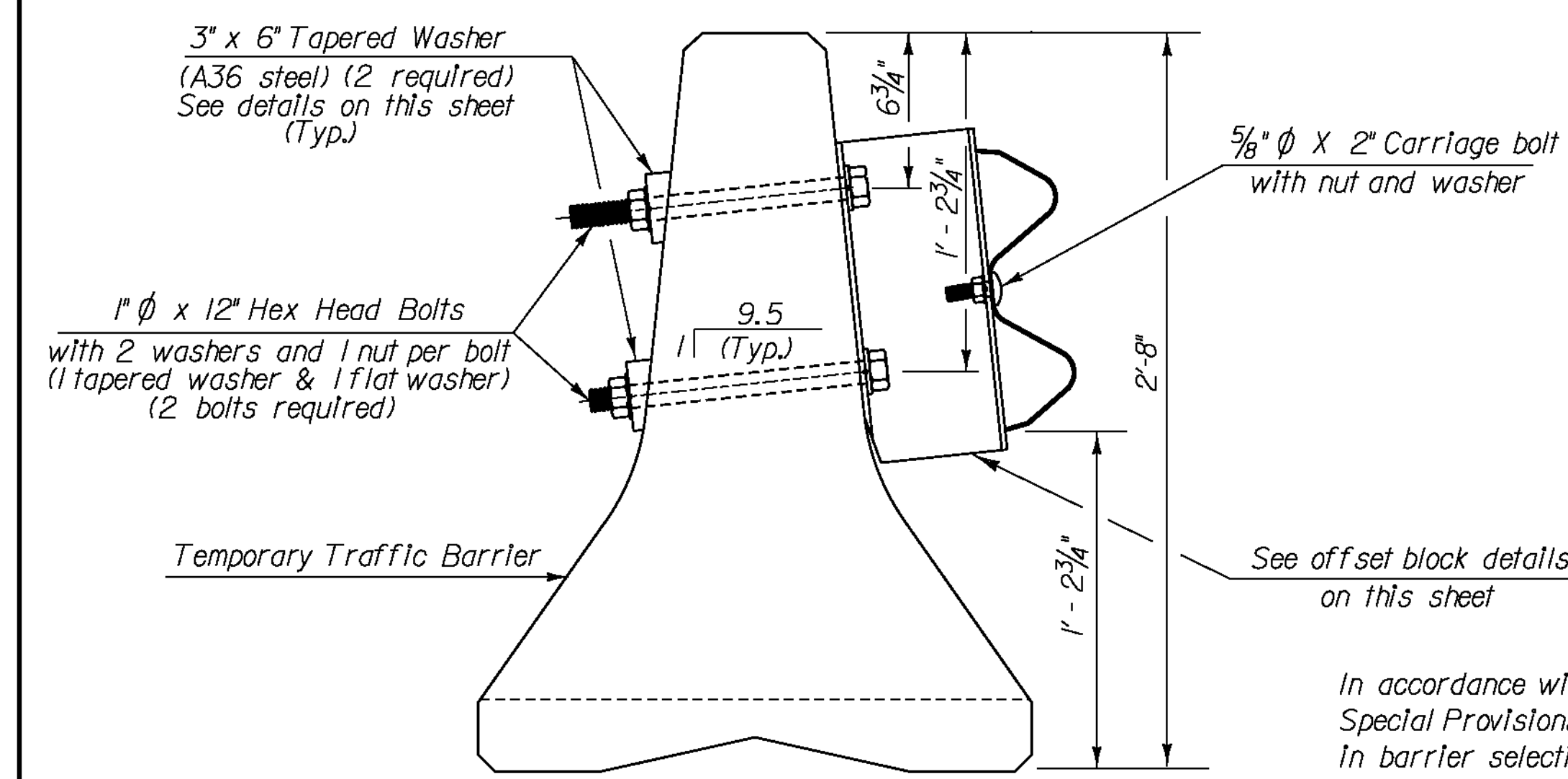
TAPERED WASHER DETAILS

$1'' = 6''$



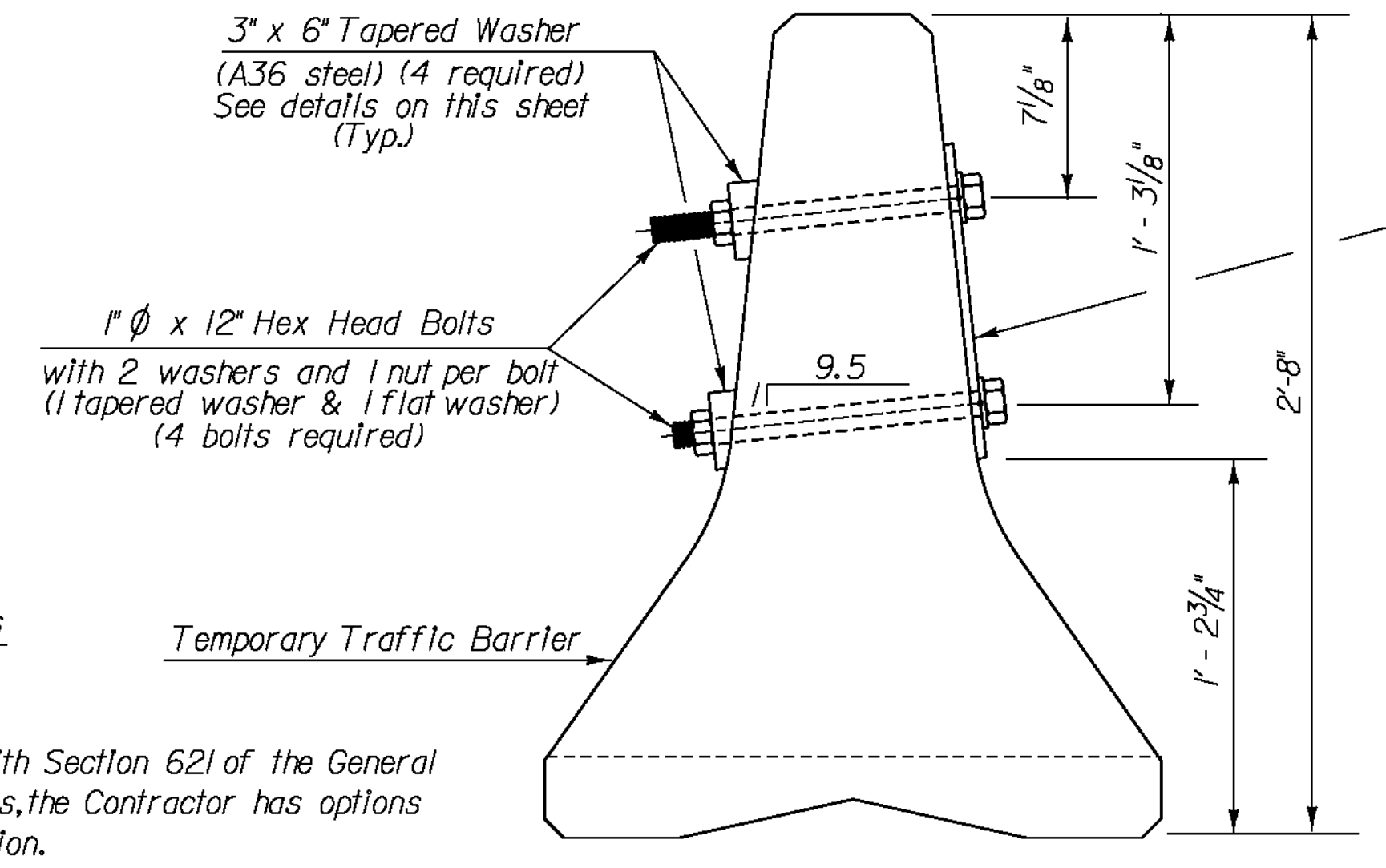
OFFSET BLOCK DETAILS

$1'' = 6''$



SECTION B-B

$1'' = 6''$



SECTION A-A

In accordance with Section 621 of the General Special Provisions, the Contractor has options in barrier selection.

PROJECT NAME: WATERFORD	PLOT DATE: 3/19/2012
PROJECT NUMBER: IM MEMB(31)	DRAWN BY: VTRANS
FILE NAME: s1a296r.dgn	CHECKED BY: VTRANS
PROJECT LEADER: JPB	SHEET 12 OF 48
DESIGNED BY: VTRANS	
BARRIER RAIL DETAILS	