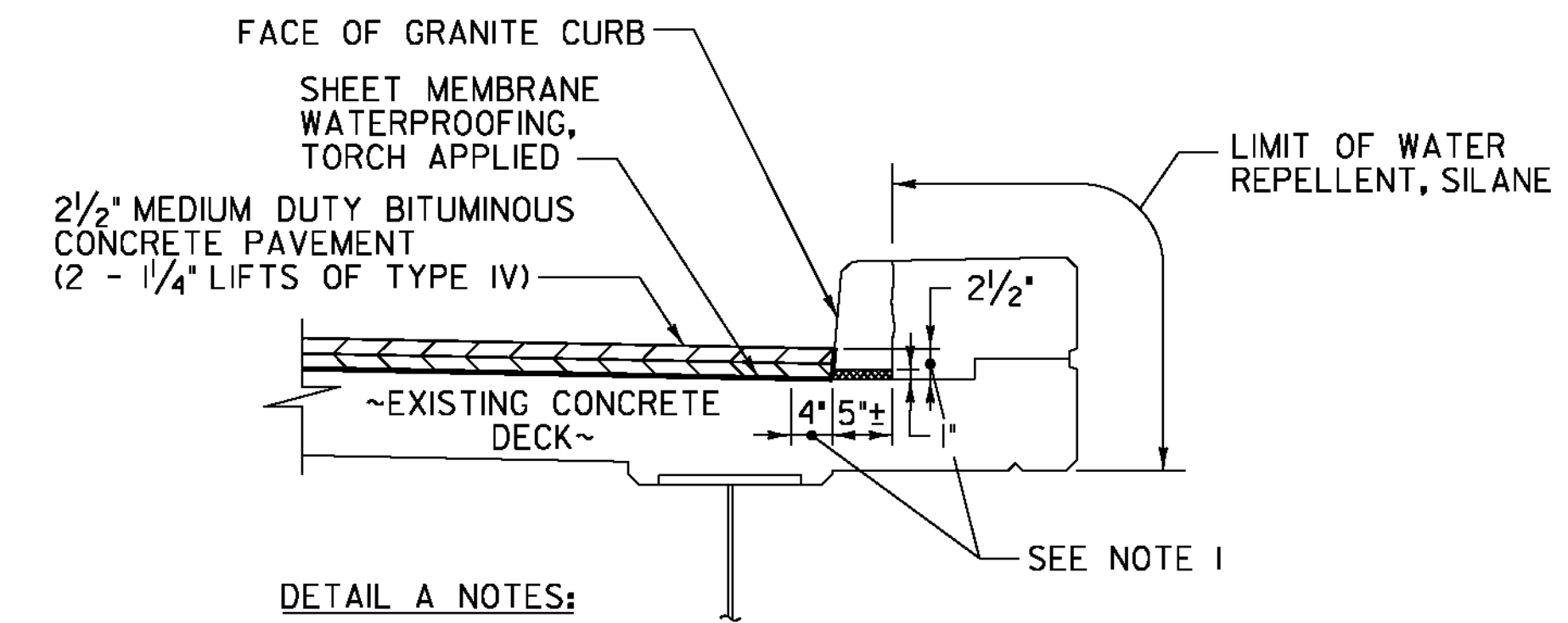


TYPICAL SECTION - PHASE I CONSTRUCTION

(BRIDGES IN&S, 5N&S, AND 3N)
NOT TO SCALE

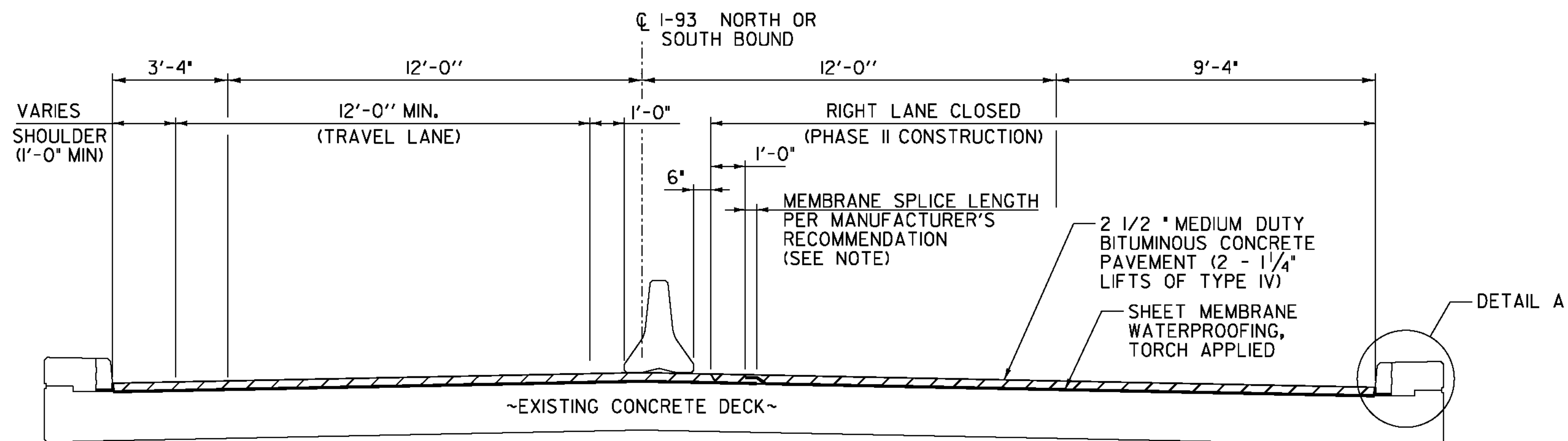


DETAIL A NOTES:

- INDICATES AREA ALONG DECK AND UP FACE OF CURB FOR PLACEMENT OF TWO COATS OF POLYURETHANE MEMBRANE.
- POLYURETHANE MEMBRANE AND BLAST CLEANING SHALL BE INCLUDED IN THE UNIT PRICE BID FOR SHEET MEMBRANE WATERPROOFING, TORCH APPLIED.
- SHEET MEMBRANE WATERPROOFING SHALL EXTEND TO FACE OF CURB AS SHOWN.
- IN ADDITION TO THE REQUIREMENTS OF SUBSECTION 519.04, BLAST CLEAN 2 1/2" UP THE FACE OF CURB PRIOR TO PLACING THE MEMBRANE.
- REPOINTING OF THE GRANITE CURB SHALL BE REQUIRED AND PAID FOR UNDER ITEM 900.625, "SPECIAL PROVISION (REPOINTING GRANITE CURB)". THE QUANTITY FOR THIS ITEM AS SHOWN ON THE QUANTITY SHEET IS ESTIMATED.

DETAIL A

(BRIDGES IN&S, 3N&S, AND 5N&S)
NOT TO SCALE



TYPICAL SECTION - PHASE II CONSTRUCTION

(BRIDGES IN&S, 5N&S, AND 3N)
NOT TO SCALE

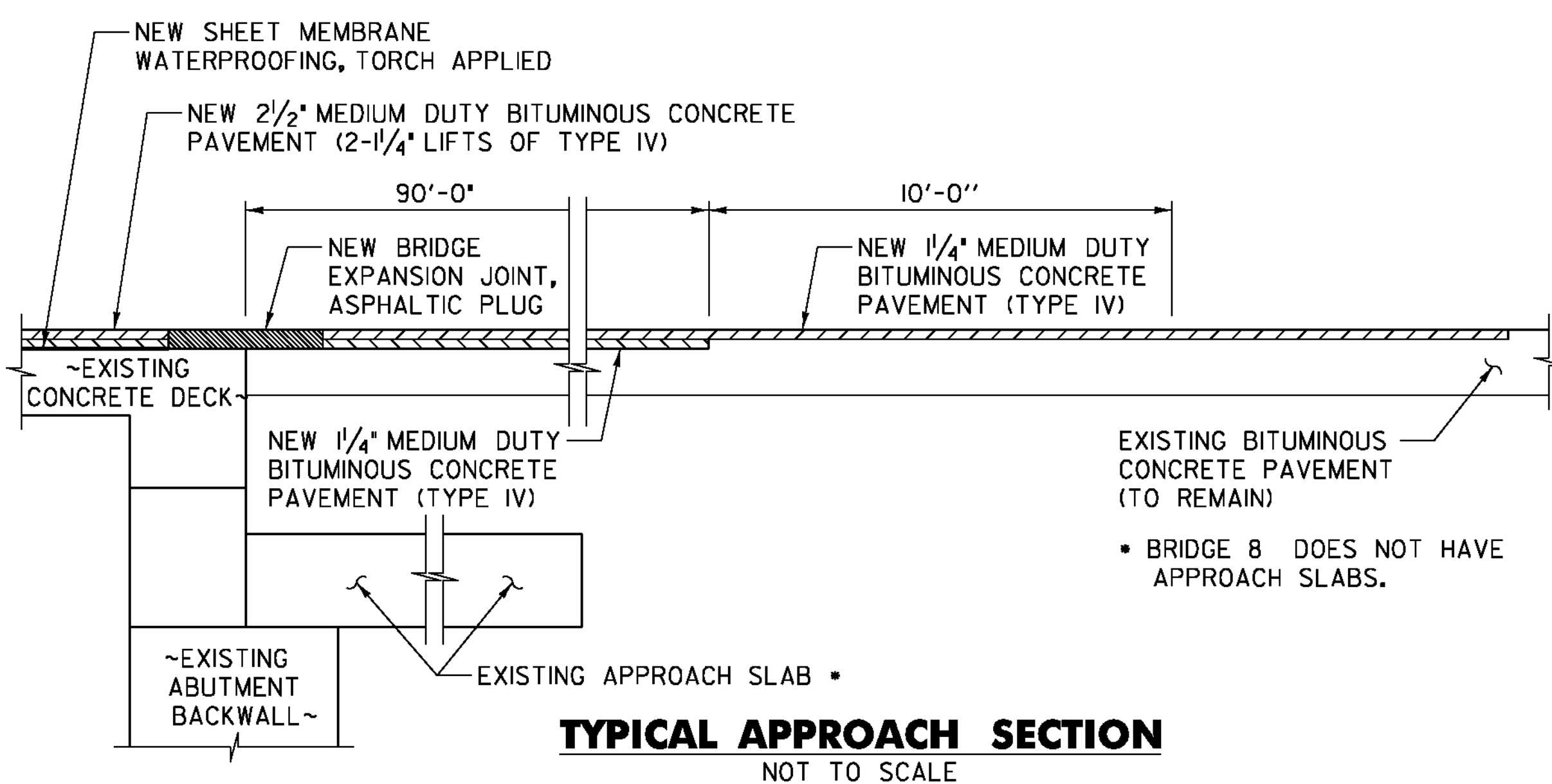
NOTE: MEMBRANE PLACEMENT FOR BRIDGE NO. 3N IS SIMILAR TO THAT SHOWN IN THE ABOVE SECTIONS EXCEPT THE THE BRIDGE IS SUPERELEVATED WITH THE LEFT SHOULDER AT THE LOW SIDE OF THE CROSS SLOPE. THE CONTRACTOR SHALL BEGIN PLACEMENT OF THE MEMBRANE AT THE LOW SIDE OF THE BRIDGE TO ENSURE THAT THE HIGH SIDE OVERLAPS THE LOW SIDE AT THE MEMBRANE SPLICE.

BRIDGE LENGTH AND WIDTH (CURB TO CURB)

BRIDGE NO.	WIDTH (CURB TO CURB) (FEET)	LENGTH (FEET)
IN	36.67	204.88
IS	36.67	170.91
3N	36.67	113.04
3S	36.67	113.08
5N	36.67	109.16
5S	36.67	108.96
8	29.33	306.44

ASPHALTIC PLUG JOINT REPLACEMENT SCHEDULE

BRIDGE NO.	ABUT. 1	PIER 1	PIER 2	ABUT. 2
IN	53 LF	-	-	53 LF
IS	48 LF	-	-	48 LF
3N	38 LF	-	-	38 LF
3S	38 LF	-	-	38 LF
5N	55 LF	-	-	55 LF
5S	53 LF	-	-	53 LF
8	-	-	-	-



TYPICAL APPROACH SECTION

NOT TO SCALE

PROJECT NAME: WATERFORD
PROJECT NUMBER: IM MEMB(3I)

FILE NAME: s1a296conc_details.dgn PLOT DATE: 3/19/2012
PROJECT LEADER: JPB DRAWN BY: MWS
DESIGNED BY: SRB CHECKED BY: JF
BITUMINOUS CONCRETE DETAILS SHEET 1 SHEET 9 OF 48