

6 INCH WHITE LINE
 RAMP "A" 1,850' (SOLID)
 RAMP "A" 250' (DOTTED)
 RAMP "C" 1,050' (SOLID)
 RAMP "C" 75' (DOTTED)

6 INCH YELLOW LINE
 RAMP "A" 550' (SOLID)
 RAMP "C" 600' (SOLID)

12 INCH WHITE LINE
 RAMP "A" 575' (SOLID)
 RAMP "C" 475' (SOLID)
 RAMP "C" 200' (DIAGONALS)

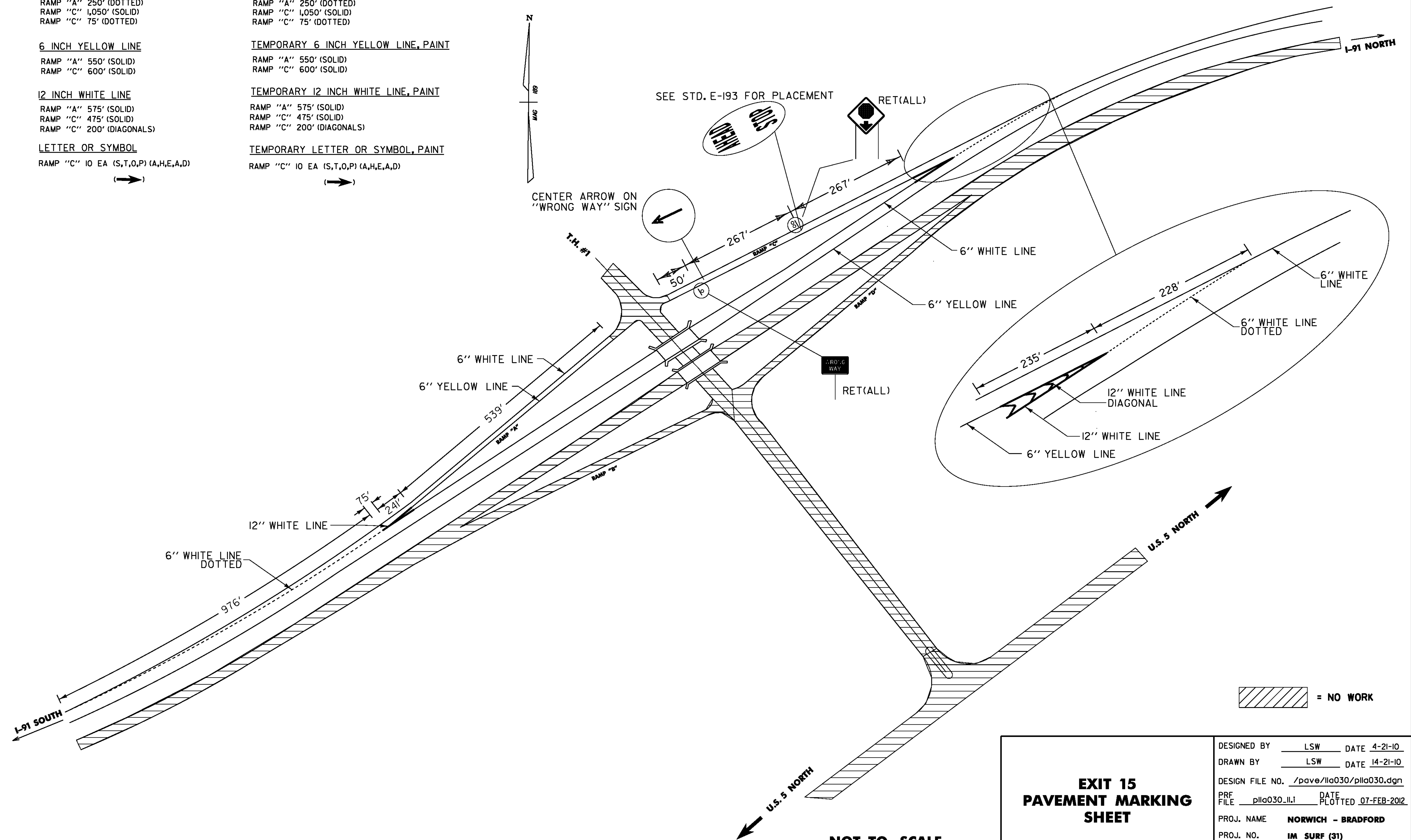
LETTER OR SYMBOL
 RAMP "C" IO EA (S,T,O,P) (A,H,E,A,D)

TEMPORARY 6 INCH WHITE LINE, PAINT
 RAMP "A" 1,850' (SOLID)
 RAMP "A" 250' (DOTTED)
 RAMP "C" 1,050' (SOLID)
 RAMP "C" 75' (DOTTED)

TEMPORARY 6 INCH YELLOW LINE, PAINT
 RAMP "A" 550' (SOLID)
 RAMP "C" 600' (SOLID)

TEMPORARY 12 INCH WHITE LINE, PAINT
 RAMP "A" 575' (SOLID)
 RAMP "C" 475' (SOLID)
 RAMP "C" 200' (DIAGONALS)

TEMPORARY LETTER OR SYMBOL, PAINT
 RAMP "C" IO EA (S,T,O,P) (A,H,E,A,D)



SEE STD. E-193 FOR PLACEMENT

CENTER ARROW ON "WRONG WAY" SIGN

RET(ALL)

NOT TO SCALE

**EXIT 15
 PAVEMENT MARKING
 SHEET**

DESIGNED BY LSW DATE 4-21-10
 DRAWN BY LSW DATE 14-21-10
 DESIGN FILE NO. /pave/11a030/p11a030.dgn
 PRF FILE p11a030-11.i DATE PLOTTED 07-FEB-2012
 PROJ. NAME **NORWICH - BRADFORD**
 PROJ. NO. **IM SURF (31)**
 SHEET **11** OF **19** SHEETS