

**6" YELLOW LINE**  
 RAMP C MM 0.162 TO RAMP C MM 0.251, SOLID LT.  
 RAMP C MM 0.247 TO RAMP C MM 0.260, SOLID LT. SLIP RAMP  
 (BREAK FOR CROSSWALK)

**TEMPORARY 6" YELLOW LINE**  
 RAMP C MM 0.162 TO RAMP C MM 0.251, SOLID LT.  
 RAMP C MM 0.247 TO RAMP C MM 0.260, SOLID LT. SLIP RAMP  
 (BREAK FOR CROSSWALK)

**6" WHITE LINE**  
 RAMP C MM 0.162 TO RAMP C MM 0.201, SOLID RT./DASHED CENTERLINE  
 RAMP C MM 0.177 TO RAMP C MM 0.201, DASHED RT.  
 RAMP C MM 0.201 TO RAMP C MM 0.255, SOLID RT. & CENTERLINE  
 RAMP C MM 0.201 TO RAMP C MM 0.260, SOLID RT.

**TEMPORARY 6" WHITE LINE**  
 RAMP C MM 0.162 TO RAMP C MM 0.201, SOLID RT./DASHED CENTERLINE  
 RAMP C MM 0.177 TO RAMP C MM 0.201, DASHED RT.  
 RAMP C MM 0.201 TO RAMP C MM 0.255, SOLID RT. & CENTERLINE  
 RAMP C MM 0.201 TO RAMP C MM 0.260, SOLID RT.

**TEMPORARY LETTER OR SYMBOL**  
 RAMP C MM 0.202, LT. & RT. - "US7" (2)  
 RAMP C RT. - "NORTH"  
 RAMP C LT. - "SOUTH"  
 RAMP C LT. (3)  
 RAMP C CENTERLINE (3)  
 RAMP C RT. (2)  
 RAMP C LT. & RT. - "ONLY" (3)  
 RAMP C RT. - "YIELD"

**LETTER OR SYMBOL**  
 RAMP C MM 0.202, LT. & RT. - "US7" (2)  
 RAMP C RT. - "NORTH"  
 RAMP C LT. - "SOUTH"  
 RAMP C LT. (3)  
 RAMP C CENTERLINE (3)  
 RAMP C RT. (2)  
 RAMP C LT. & RT. - "ONLY" (3)  
 RAMP C RT. - "YIELD"

**12" WHITE LINE**  
 RAMP C DOUBLE SOLID W/ DIAGONALS

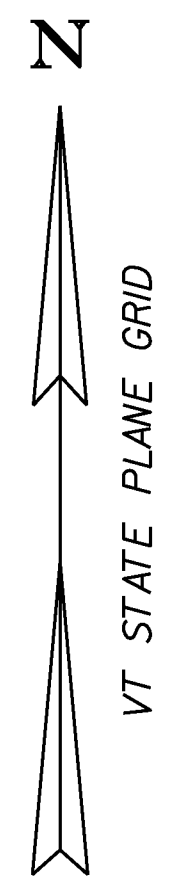
**TEMPORARY 12" WHITE LINE**  
 RAMP C DOUBLE SOLID W/ DIAGONALS

**CROSSWALK MARKING**  
 RAMP C LT. (29')  
 RAMP C RT. (24')

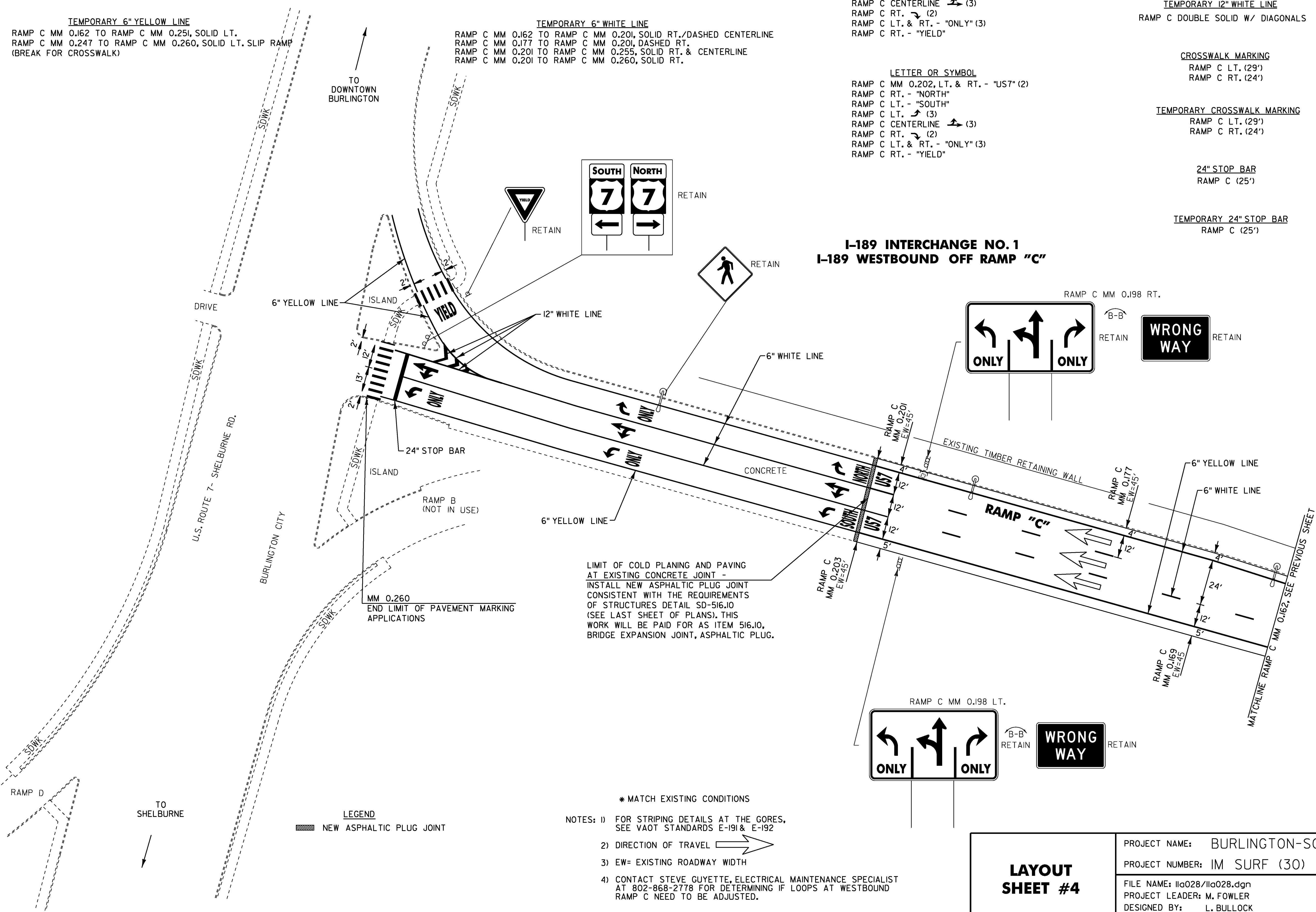
**TEMPORARY CROSSWALK MARKING**  
 RAMP C LT. (29')  
 RAMP C RT. (24')

**24" STOP BAR**  
 RAMP C (25')

**TEMPORARY 24" STOP BAR**  
 RAMP C (25')



**I-189 INTERCHANGE NO. 1  
 I-189 WESTBOUND OFF RAMP "C"**



LIMIT OF COLD PLANING AND PAVING  
 AT EXISTING CONCRETE JOINT -  
 INSTALL NEW ASPHALTIC PLUG JOINT  
 CONSISTENT WITH THE REQUIREMENTS  
 OF STRUCTURES DETAIL SD-516.10  
 (SEE LAST SHEET OF PLANS). THIS  
 WORK WILL BE PAID FOR AS ITEM 516.10,  
 BRIDGE EXPANSION JOINT, ASPHALTIC PLUG.

**LEGEND**  
 [Symbol] NEW ASPHALTIC PLUG JOINT

- \* MATCH EXISTING CONDITIONS
- NOTES: 1) FOR STRIPING DETAILS AT THE GORES,  
 SEE VAOT STANDARDS E-191 & E-192
- 2) DIRECTION OF TRAVEL →
- 3) EW= EXISTING ROADWAY WIDTH
- 4) CONTACT STEVE GUYETTE, ELECTRICAL MAINTENANCE SPECIALIST  
 AT 802-868-2778 FOR DETERMINING IF LOOPS AT WESTBOUND  
 RAMP C NEED TO BE ADJUSTED.

<b>LAYOUT SHEET #4</b>	PROJECT NAME: BURLINGTON-SO. BURLINGTON
	PROJECT NUMBER: IM SURF (30)
	FILE NAME: Ila028/Ila028.dgn PROJECT LEADER: M. FOWLER DESIGNED BY: L. BULLOCK Ila028Ia4.1
	PLOT DATE: 12-APR-2012 DRAWN BY: L. BULLOCK CHECKED BY: M. FOWLER SHEET 19 OF 49

**NOT TO SCALE**