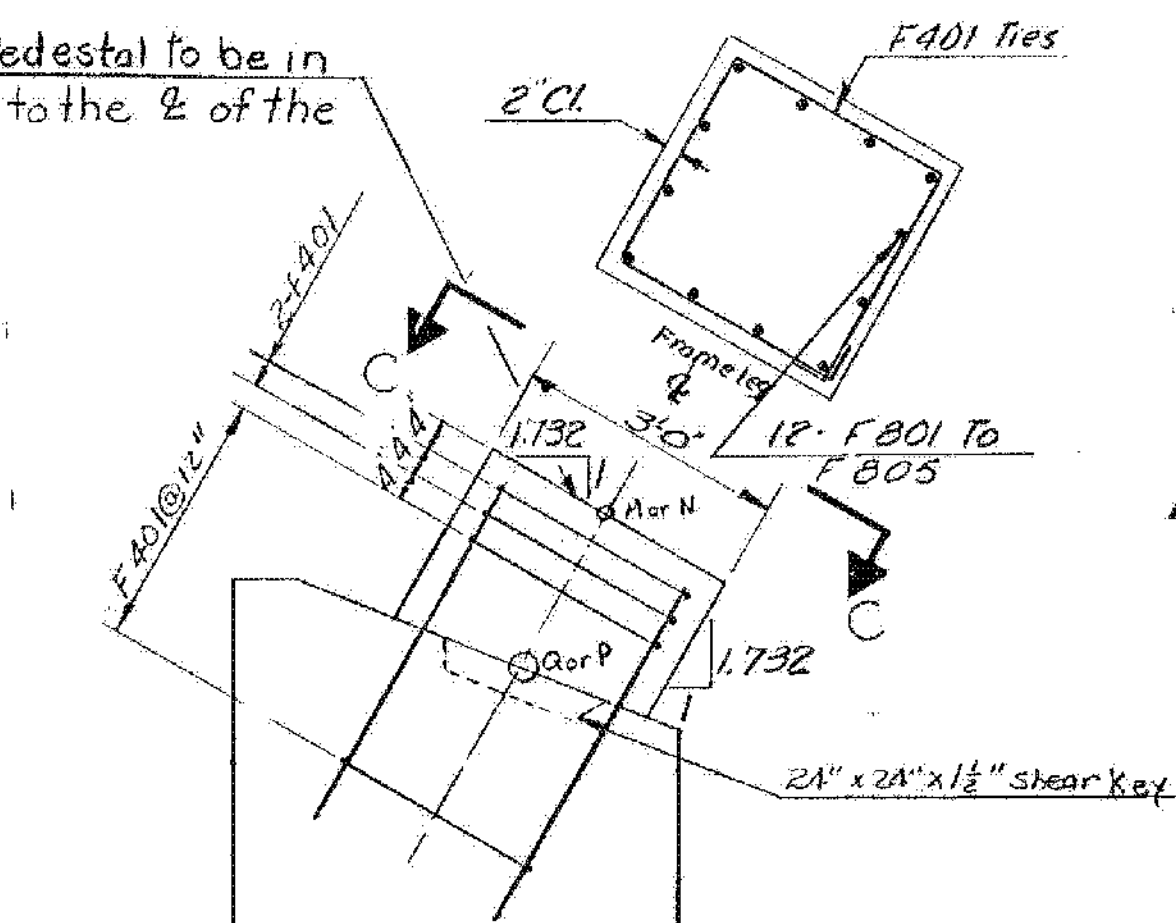
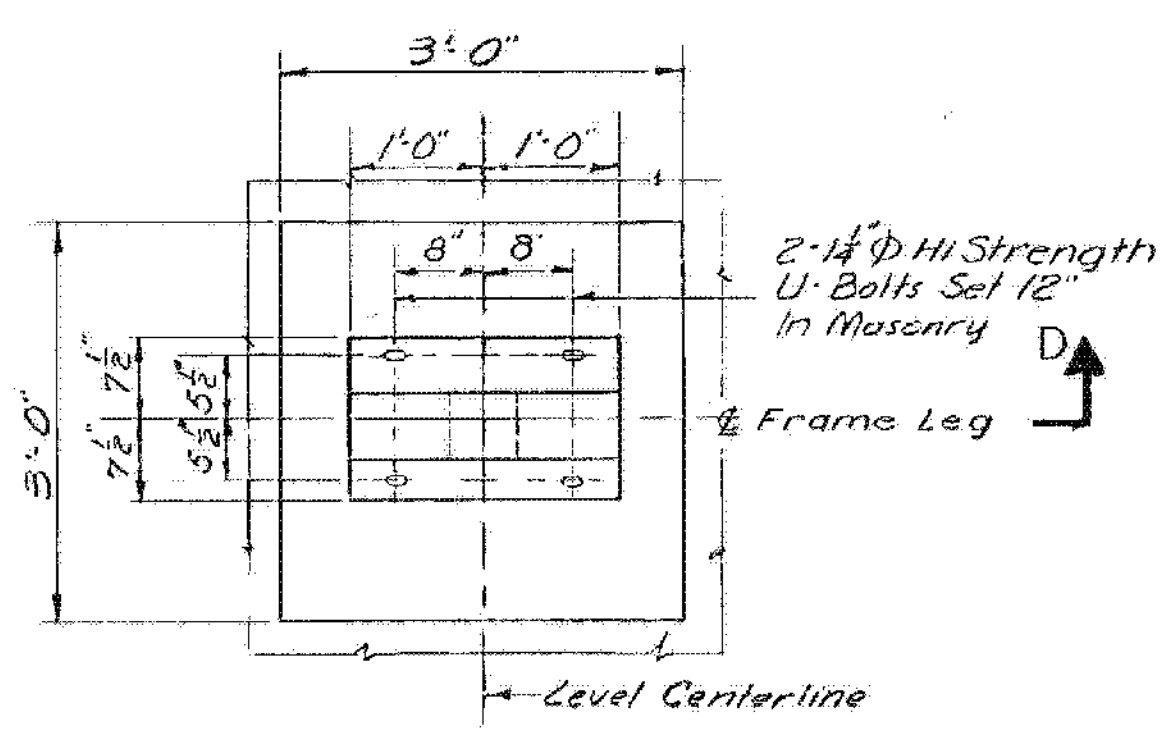


FOOTING LOCATION PLAN
SCALE: 3/32" = 1'-0"



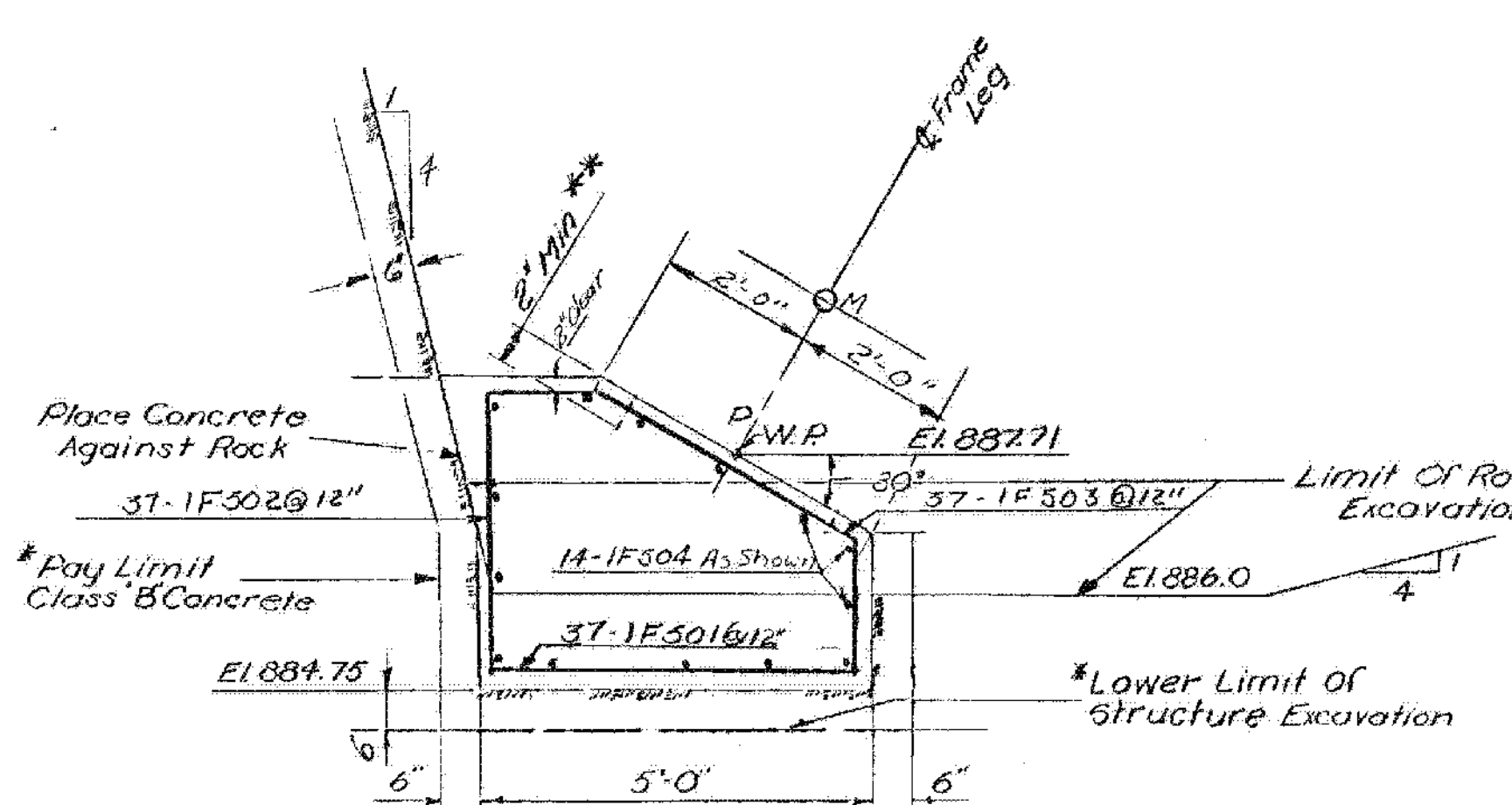
SECTION C-C
TYPICAL PEDestal REINFORCEMENT DETAIL
SCALE: 1/2" = 1'-0"



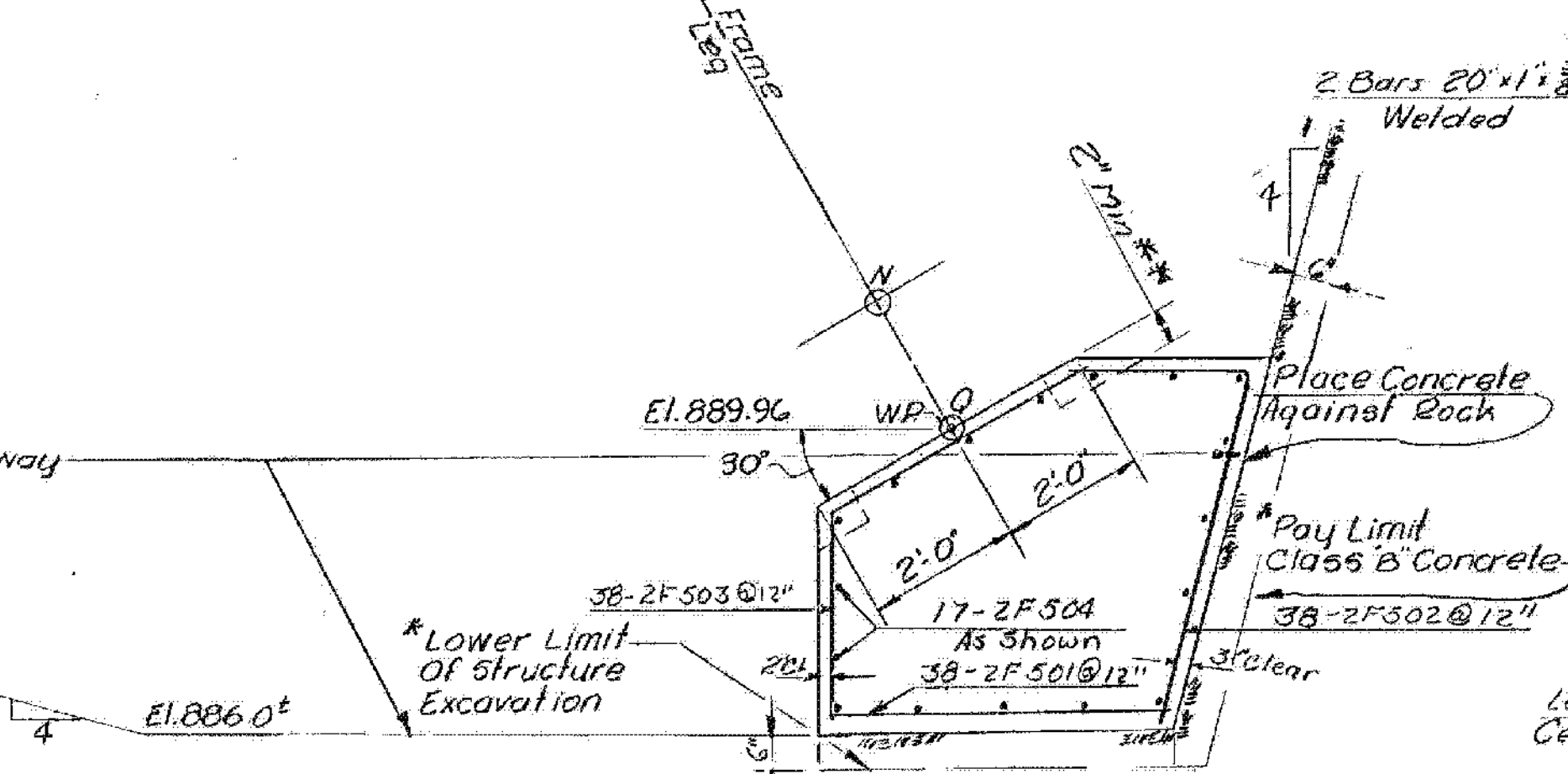
VIEW C-C
SCALE: 3/4" = 1'-0"

S.B. Pin Elev.		East	
F1	889.439	891.689	
F2	889.436	891.654	
F3	889.244	891.451	
F4	888.841	891.059	
F5	888.249	890.499	
N.B. Pin Elev.		West	
F6	911.363	913.613	
F7	911.360	913.578	
F8	911.168	913.375	
F9	910.765	912.983	
F10	910.173	912.423	

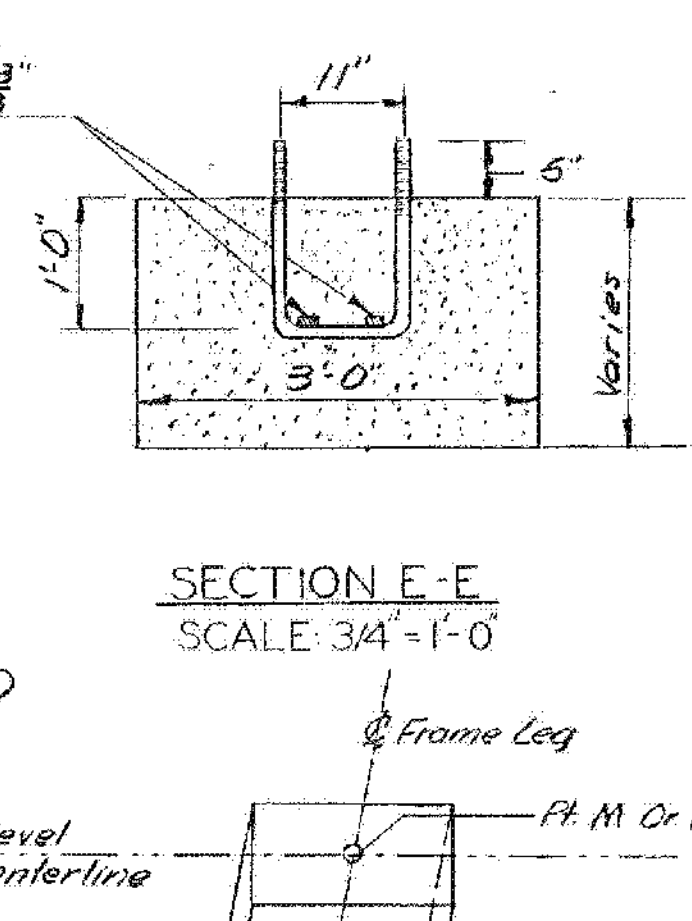
BARTON-COVENTRY
IM BPNT (11)
SHEET 80 OF 84
BRIDGES 108N&S
FOR REFERENCE ONLY



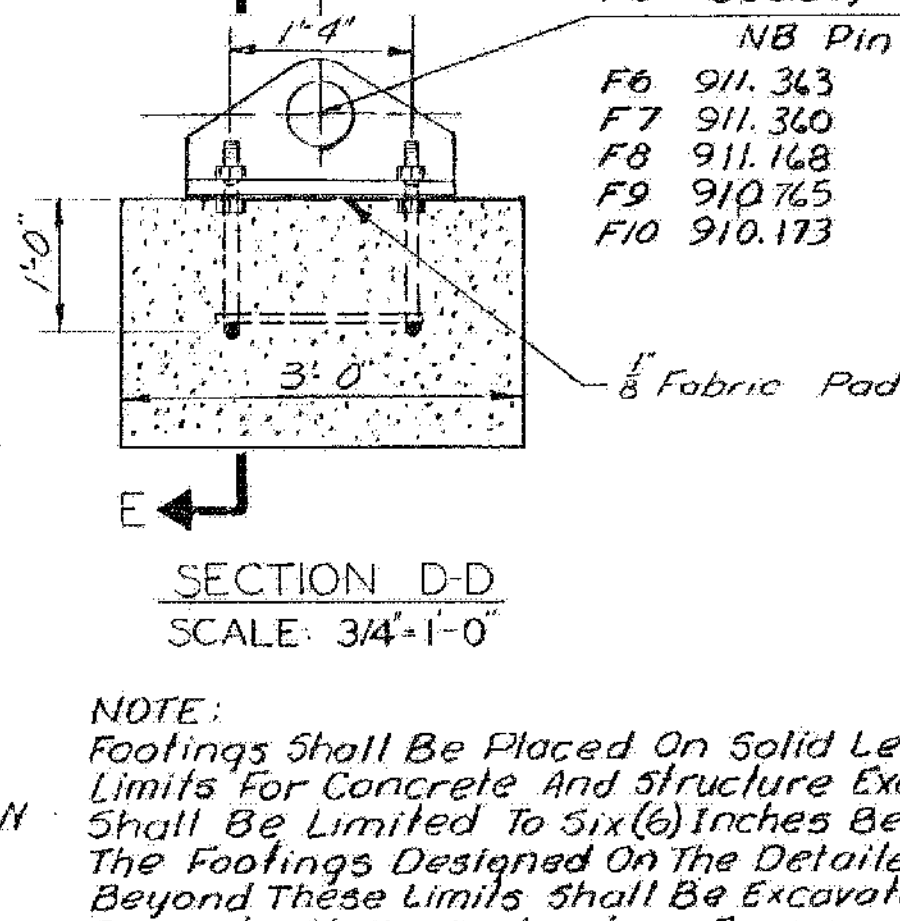
SECTION A-A SOUTHBOUND
SCALE: 1/2" = 1'-0"



SECTION B-B SOUTHBOUND
SCALE: 1/2" = 1'-0"

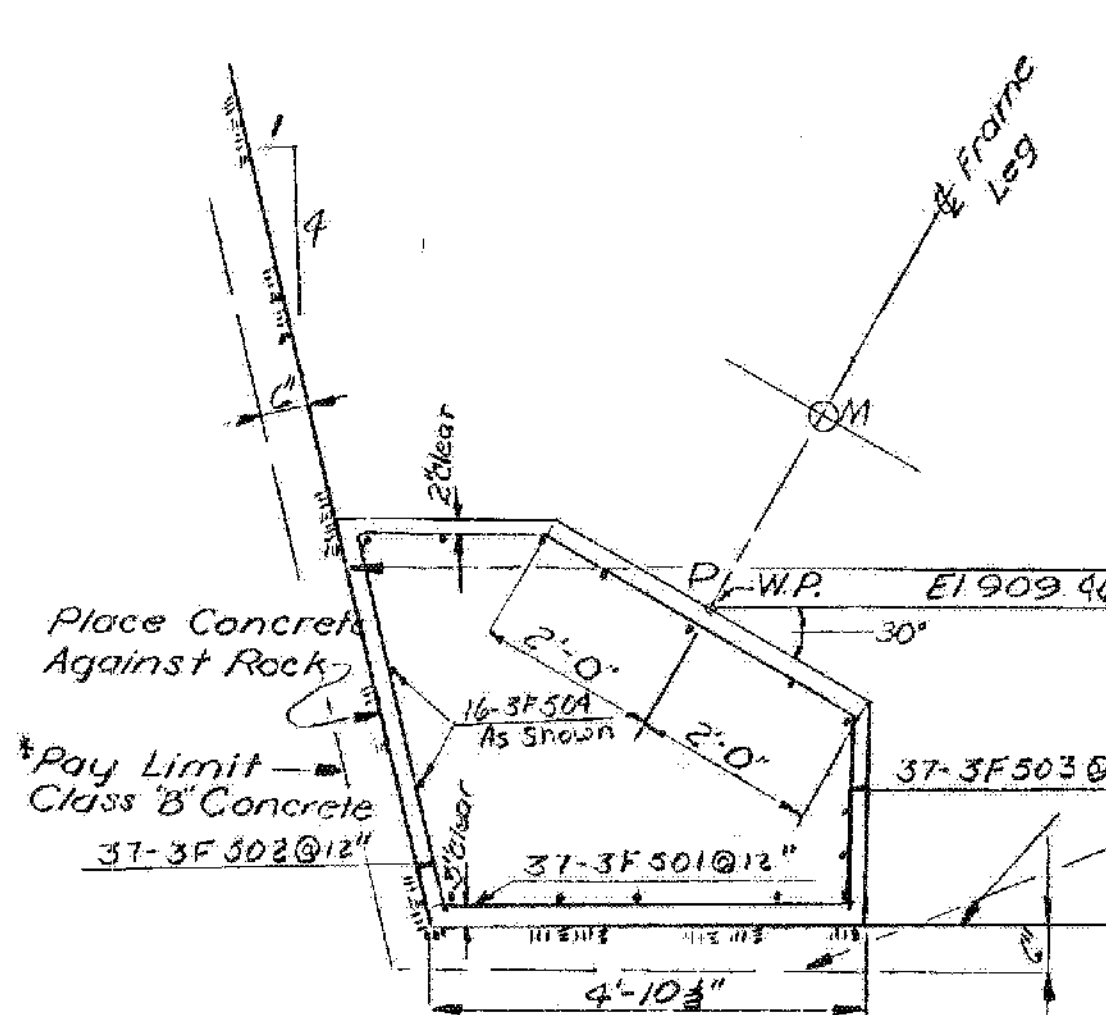


SECTION E-E
SCALE: 3/4" = 1'-0"



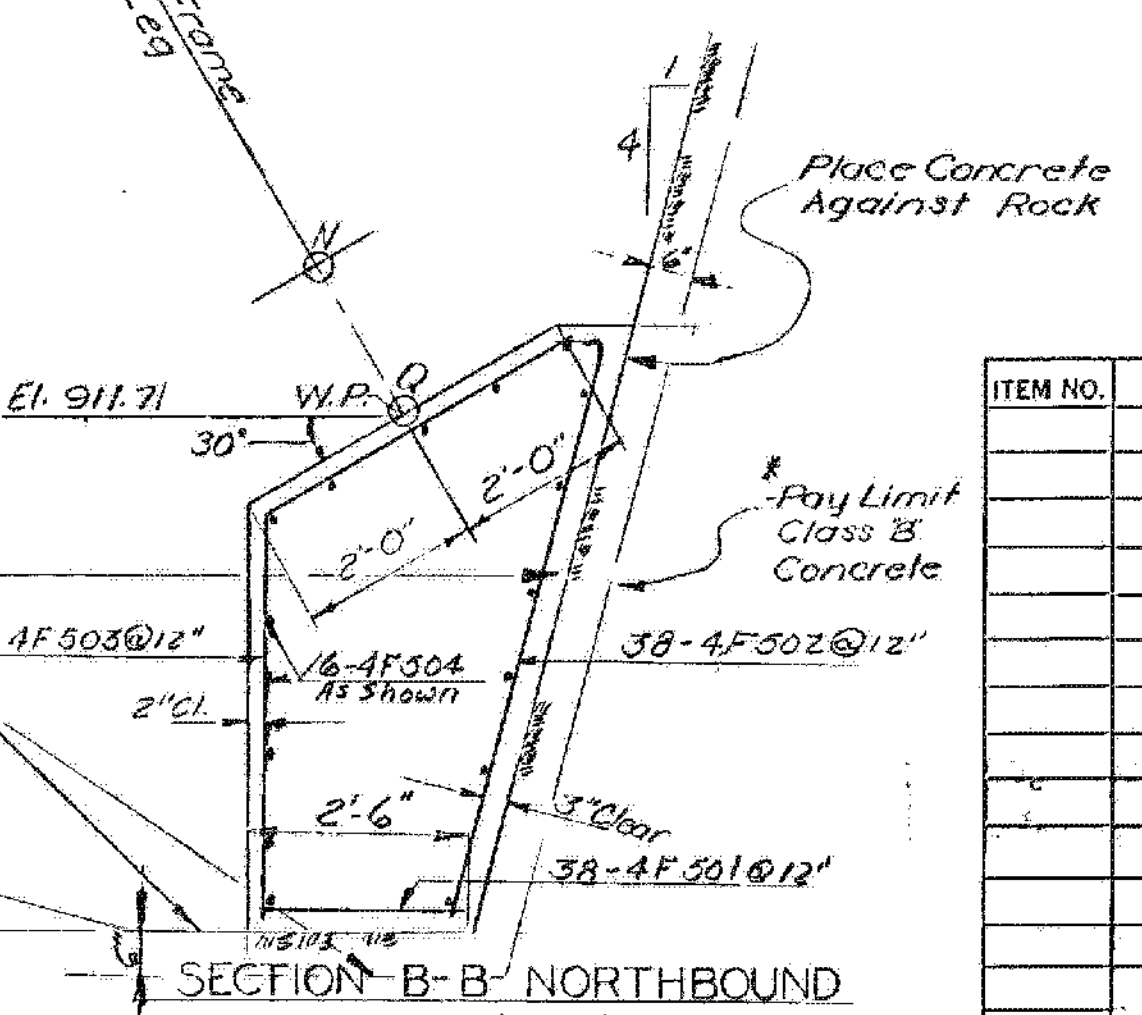
SECTION D-D
SCALE: 3/4" = 1'-0"

NOTE:
Footings shall be placed on solid ledge. The maximum pay limits for concrete and structure excavation for all footings shall be limited to six (6) inches beyond the neat lines of the footings designed on the detailed plans. Any overbreakage beyond these limits shall be excavated and replaced with concrete at the contractor's expense. Any modification in the footings to take care of overbreakage shall be as directed by the engineer.
All rock shall be removed within the limits indicated for the footings.
Item 440 Water Repellent shall be applied to all exposed portions of concrete footings.
All excavation for frame footings beyond the neat lines designated for roadway excavation will be paid for as structure excavation item 109 within the restricted limits indicated above and as shown on the sections.
Points M+11 to be within 0.01 ft. of the theoretical location horiz. & vert.



SECTION A-A NORTHBOUND
SCALE: 1/2" = 1'-0"

Frame	Bridge Seat		Working Point		Distances			
	Elev. M.	Elev. N.	Elev. P.	Elev. Q.	M-N (Horiz)	P-Q (Horiz)	P-M	Q-N
F1	888.888	891.148	887.71	889.96	77.996	79.370	1.374	1.374
F2	888.895	891.113			77.674	79.027	1.371	1.334
F3	888.703	890.910			77.559	78.683	1.149	1.099
F4	888.300	890.318			77.675	78.340	0.684	0.642
F5	887.708	889.958	887.71	889.96	77.996	77.996	0.000	0.000
F6	910.822	913.072	909.46	911.71	77.996	79.571	1.575	1.575
F7	910.819	913.037			77.674	79.227	1.571	1.534
F8	910.627	912.831			77.559	78.884	1.350	1.300
F9	910.224	912.442			77.674	78.540	0.884	0.847
F10	909.634	911.882	909.46	911.71	77.996	78.197	0.201	0.201



SECTION B-B NORTHBOUND
SCALE: 1/2" = 1'-0"

* Maximum Pay Limit for Concrete Class B and Structure Excavation.
** The Anchor Bolts Must be Cast When the Footing is Placed.
* * * The Anchor Bolts Must be Cast When the Footing is Placed.
Step footing Midway Between F4 and F5 to Provide 2" Minimum Pedestal Height.
Cut Reinforcing As Required.

ITEM NO.	ITEM	UNIT	NET	TOTAL	FINAL
	CHAN. EXCAV. OF EARTH	C.Y.			
	CHAN. EXCAV. OF ROCK	C.Y.			
	UNCLASS. CHAN. EXCAV.	C.Y.			
	STRUCT. EXCAV.	C.Y.			
	CONC. CLASS AA (MOD.)	C.Y.			
	CONC. CLASS B (MOD.)	C.Y.			
	REINF. STEEL	LBS.			
	ASPHALTIC-ASB. COATING	S.Y.			
	TREATED TIMBER PILING	L.F.			
	SPLICES FOR STEEL PILING	EA.			
	STEEL PILING	L.F.			
	UNTREATED TIMBER PILING	L.F.			

Br. 206 of 212

STATE OF VERMONT
DEPARTMENT OF HIGHWAYS

PROJECT: IRASBURG - DERBY
TOWN OF: COVENTRY

ROUTE NO. 191 STA. 2683±
SA 3 OVER I-91

FRAME FOOTING DETAILS
SCALE: AS NOTED

IN CHARGE: EDWARDS & KELCEY
DRAWN BY: SCURRAN CHECKED BY: ACENTORE
PROJECT NO. 191-3(8)
SHEET 205 OF 605 BR 206