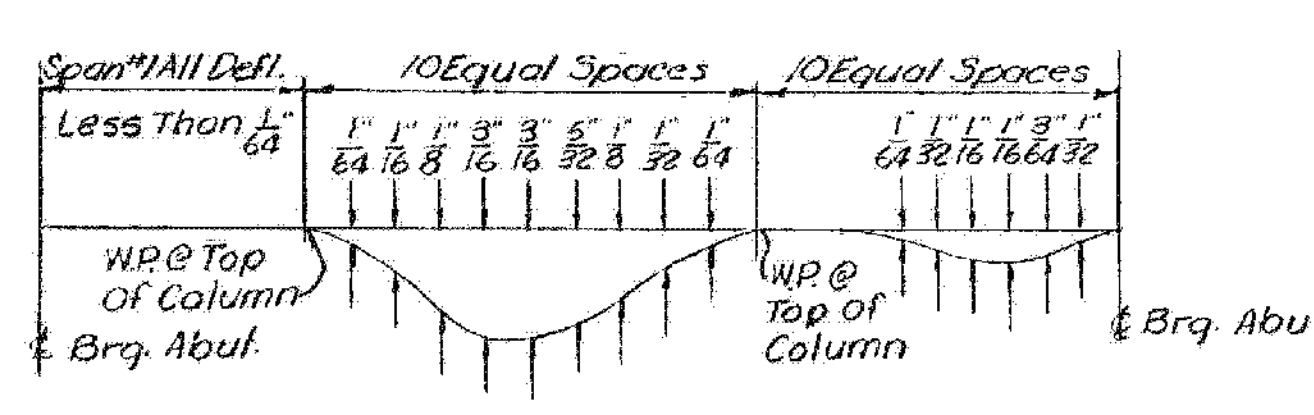
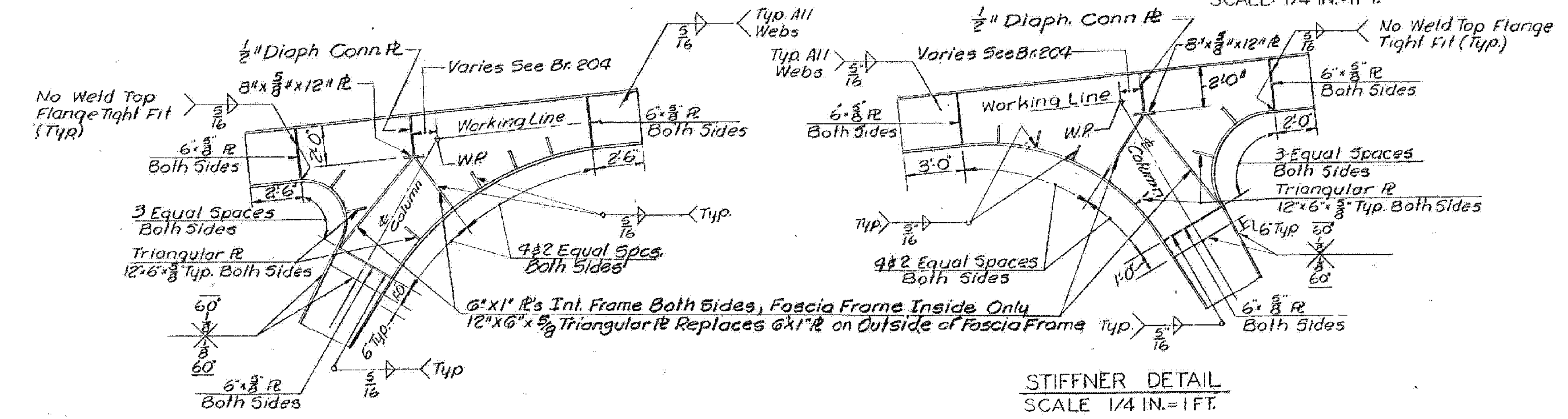
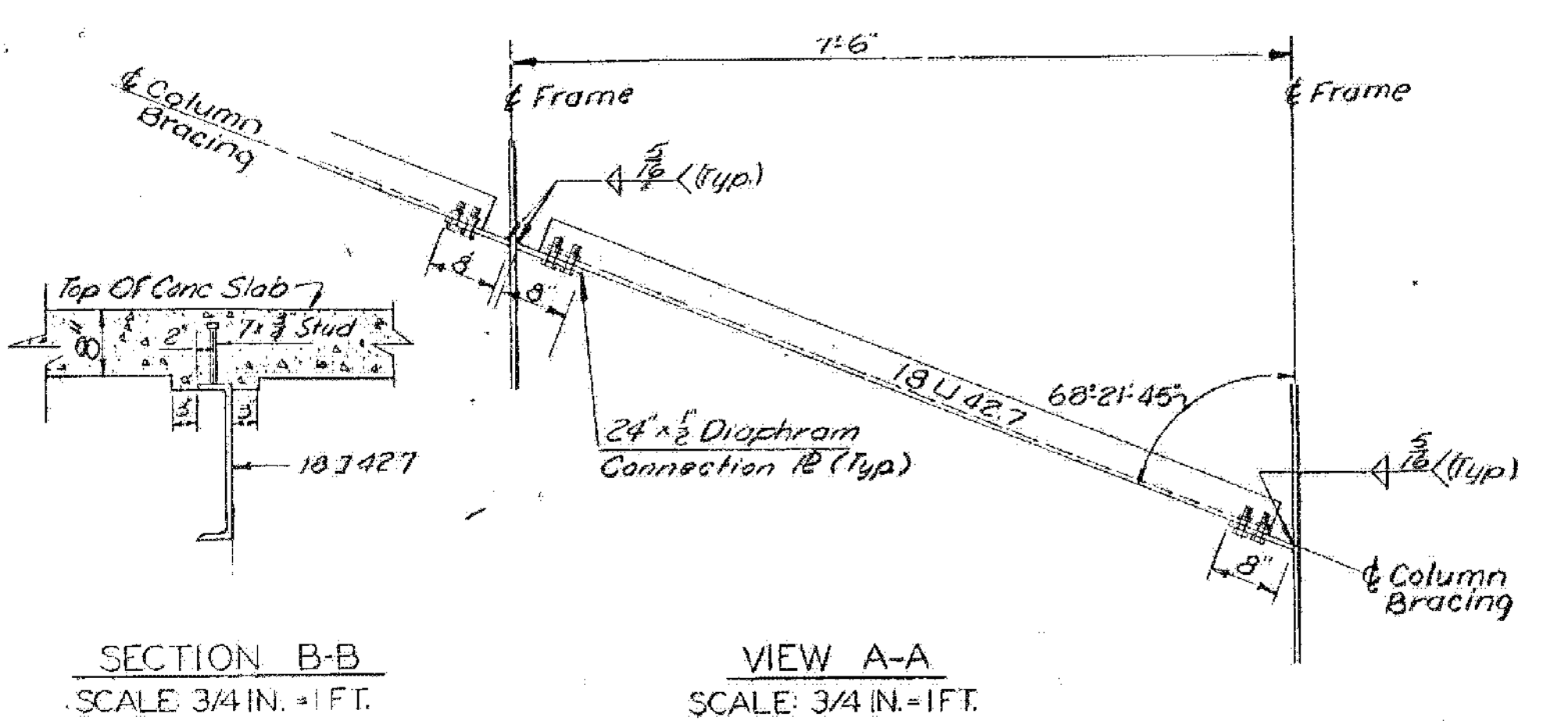
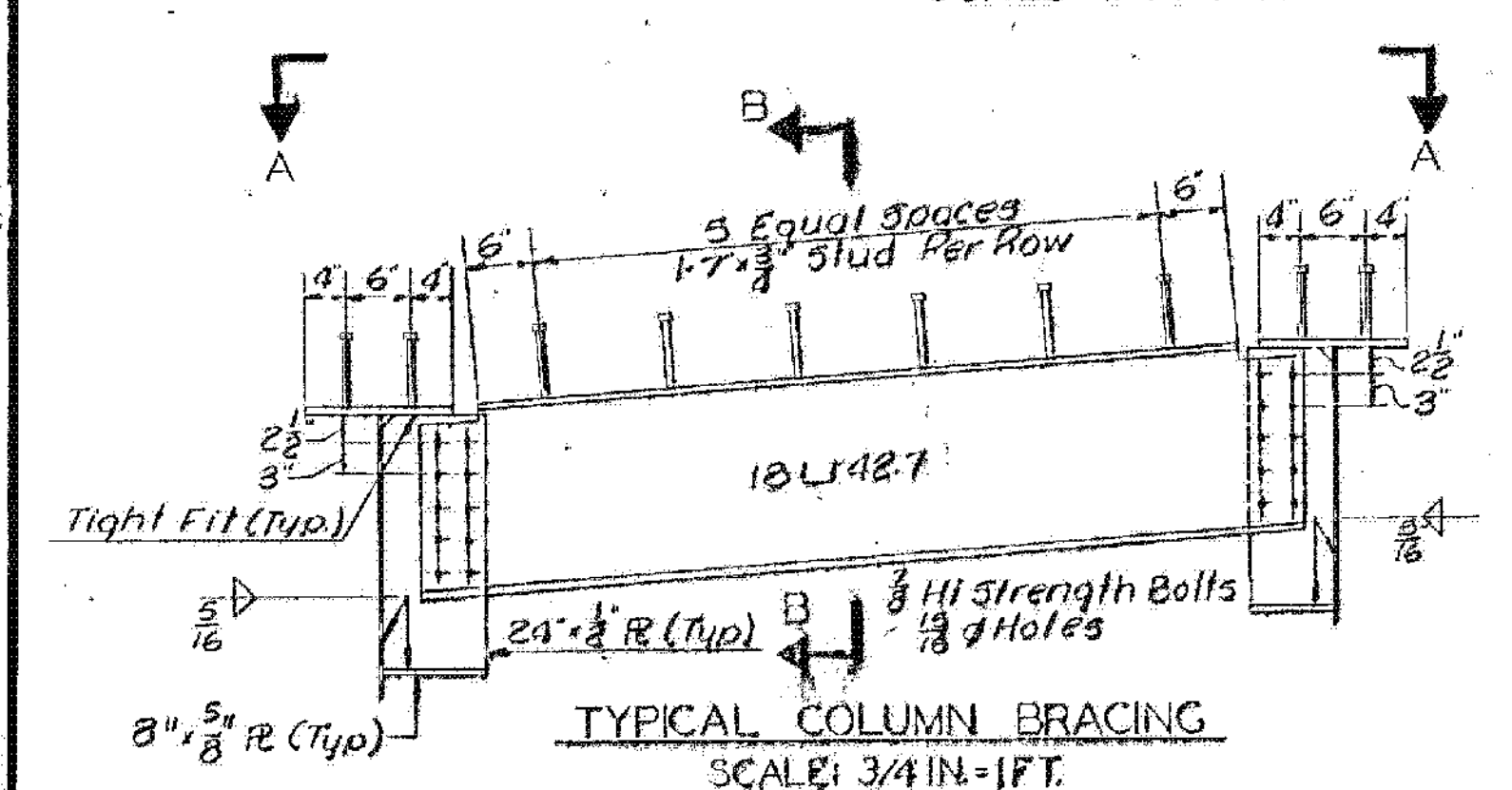


- NOTES:
1. For General Notes See STD. 54. SCB-D1-67
 2. For Expansion Brg. Details See STD. 54. SCB-D8-67 Detail 'A'
 3. For Curtain Wall Details See STD. 54. SCB-D9-67 Detail 'A'
 4. Structural Steel Shall Be ASTM A36-62T Unless Otherwise Noted.
 5. All Field Connections To Be Made With 7/8" High Strength Bolts.
 6. For Intermediate Diaphragm Details See Std. Sh. SCB-D7-67 Detail 'D'
 7. Bolt Heads To Be Placed On Exterior Side Of Fascia Frames.
 8. No Camber Required Fabricate With Any Natural Camber Up.
 9. The Concrete Curtain Walls May Be Placed Up To The Bottom Of Slab Prior To Placing The Deck Concrete. The Concrete Shall Be Placed From The Low End Towards The High End.
 10. Anchor bolts shall be grouted and tightened at the abutments immediately after the steel is erected at a temporary support shall be provided to resist transverse loads.



BARTON-COVENTRY
IM BPNT (11)
SHEET 79 OF 84
BRIDGES 108N&S
FOR REFERENCE ONLY



ITEM NO.	ITEM	UNIT	NET	TOTAL	FINAL
	CHAN. EXCAV. OF EARTH	C.Y.			
	CHAN. EXCAV. OF ROCK	C.Y.			
	UNCLASS. CHAN. EXCAV.	C.Y.			
	STRUCT. EXCAV.	C.Y.			
	CONC. CLASS AA (MOD.)	C.Y.			
	CONC. CLASS B (MOD.)	C.Y.			
	REINF. STEEL	LBS.			
	ASPHALTIC-ASB. COATING	S.Y.			
	TREATED TIMBER PILING	L.F.			
	SPLICERS FOR STEEL PILING	EA.			
	STEEL PILING	L.F.			
	UNTREATED TIMBER PILING	L.F.			

Changed 1 1/2" Conc. Slab to 8" R. Tesh. 9/26/69

STATE OF VERMONT
DEPARTMENT OF HIGHWAYS

PROJECT IRASBURG - DERBY
TOWN OF COVENTRY

ROUTE NO. 191 STA 2683 ±
SA 3 OVER I-91

STEEL DETAILS
SCALE AS NOTED

IN CHARGE EDWARDS & KELCEY
DRAWN BY D.L.E. CHECKED BY A.CENTORE
PROJECT No. 191-3(3)
SHEET 204 OF 605 BR 205