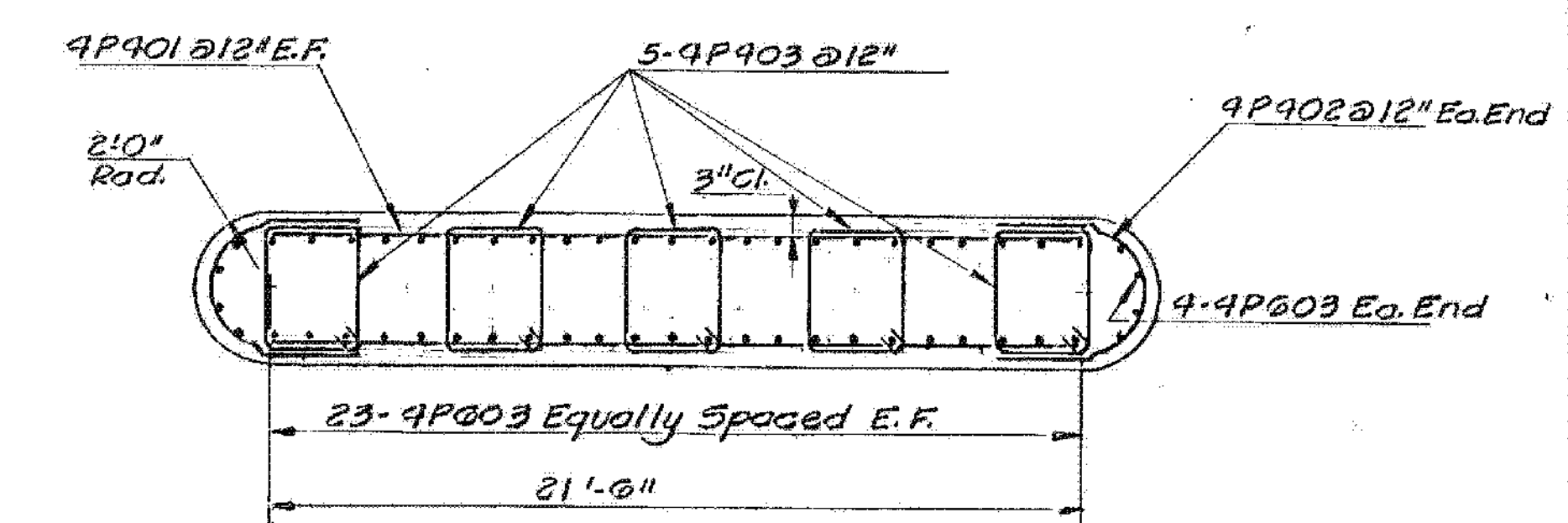
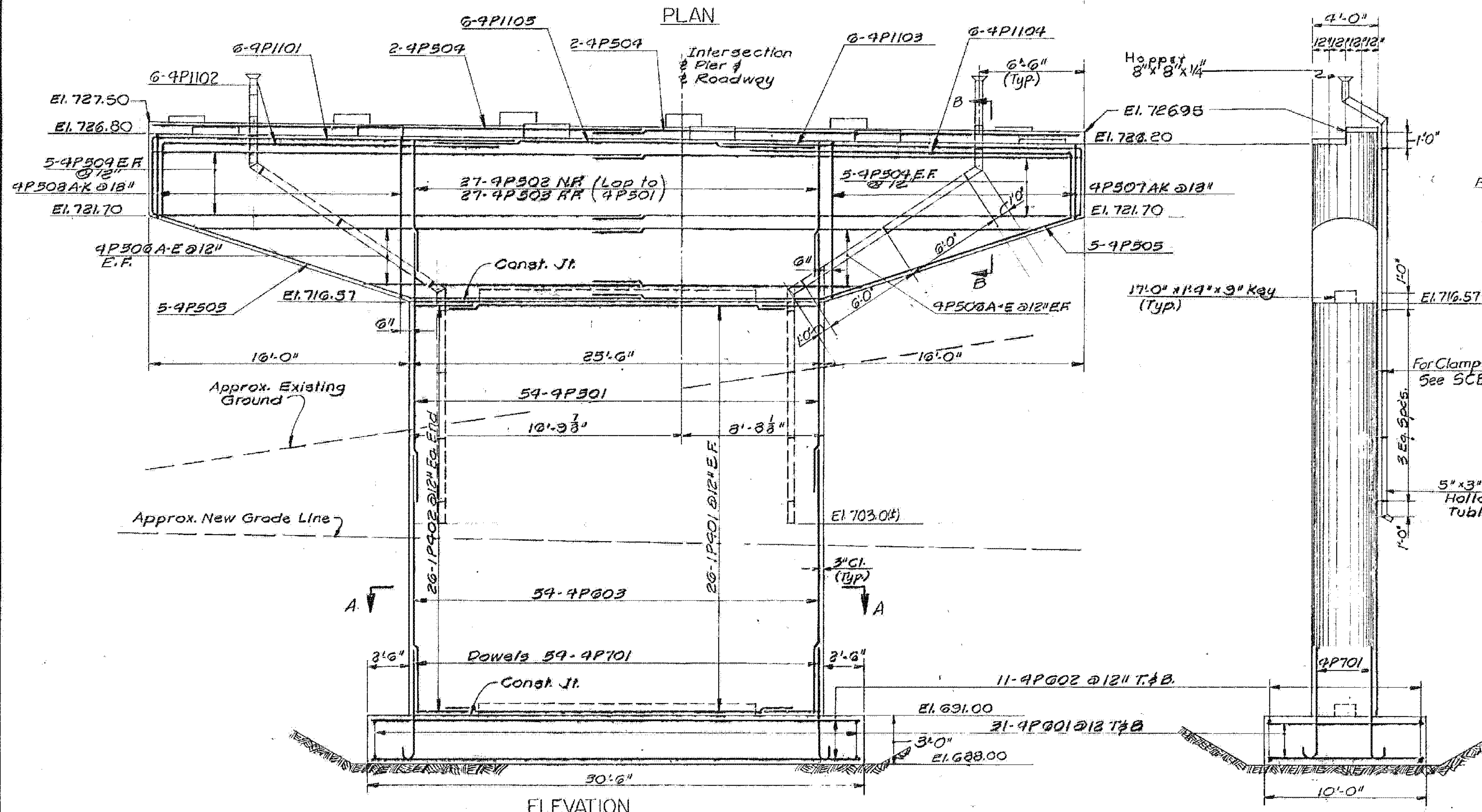


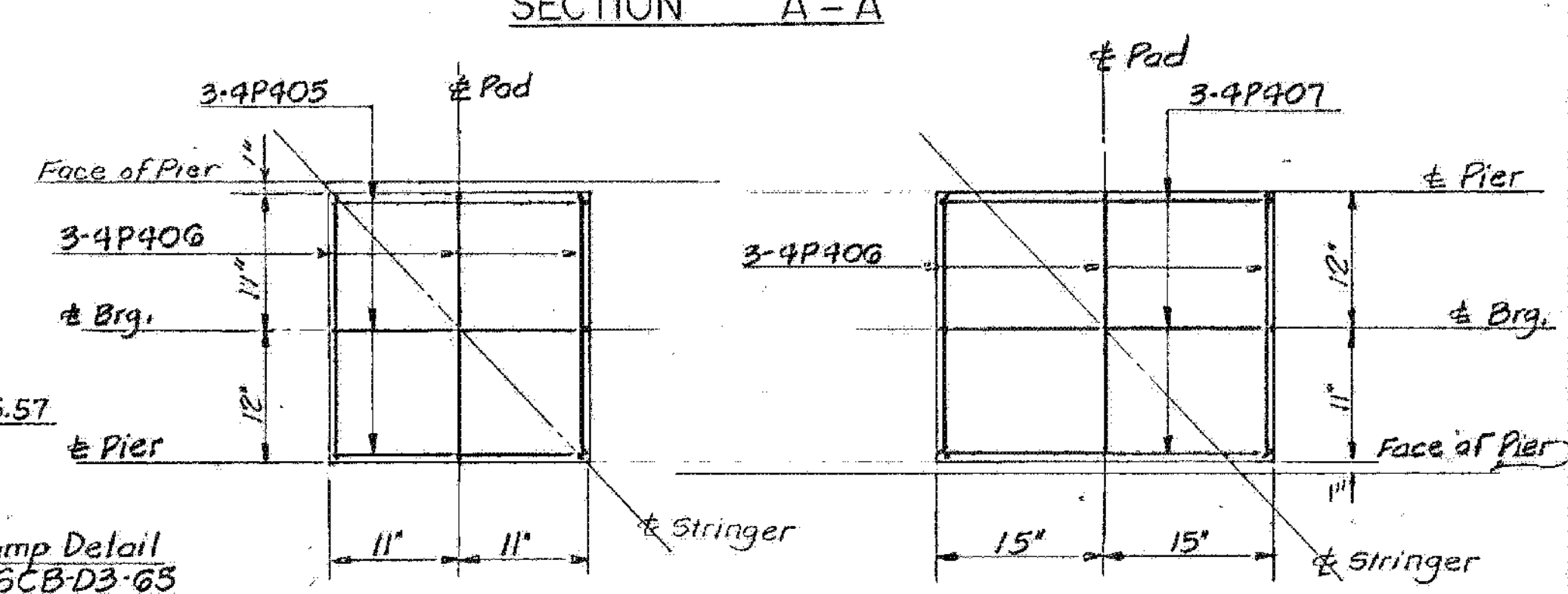
SECTION B-B
SCALE: 1/2" = 1'-0"



SECTION A-A



ELEVATION



DETAIL OF BEARING PADS
SCALE: 1" = 1'-0"

Note:
Footing is designed for maximum bearing pressure of 5 tons/8sq Ft on rock.
Br. 122 of 129

BARTON-COVENTRY
IM BPNT (11)
SHEET 72 OF 84
BRIDGE 107S
FOR REFERENCE ONLY

STATE OF VERMONT	
DEPARTMENT OF HIGHWAYS	
PROJECT	IRASBURG-DERBY
TOWN OF	IRASBURG
ROUTE No.	I-91 STA. 2539±
I-91 OVER BARTON RIVER AND SA# 3	
PIER # 4	
SCALE	1/4" = 1'-0" EXCEPT AS NOTED
IN CHARGE	C. TERENCE
DRAWN BY	JMB
CHECKED BY	A. CENTORE
PROJECT No.	I 91-3(8) 9-67
SHEET	191 OF 605 BR. 122