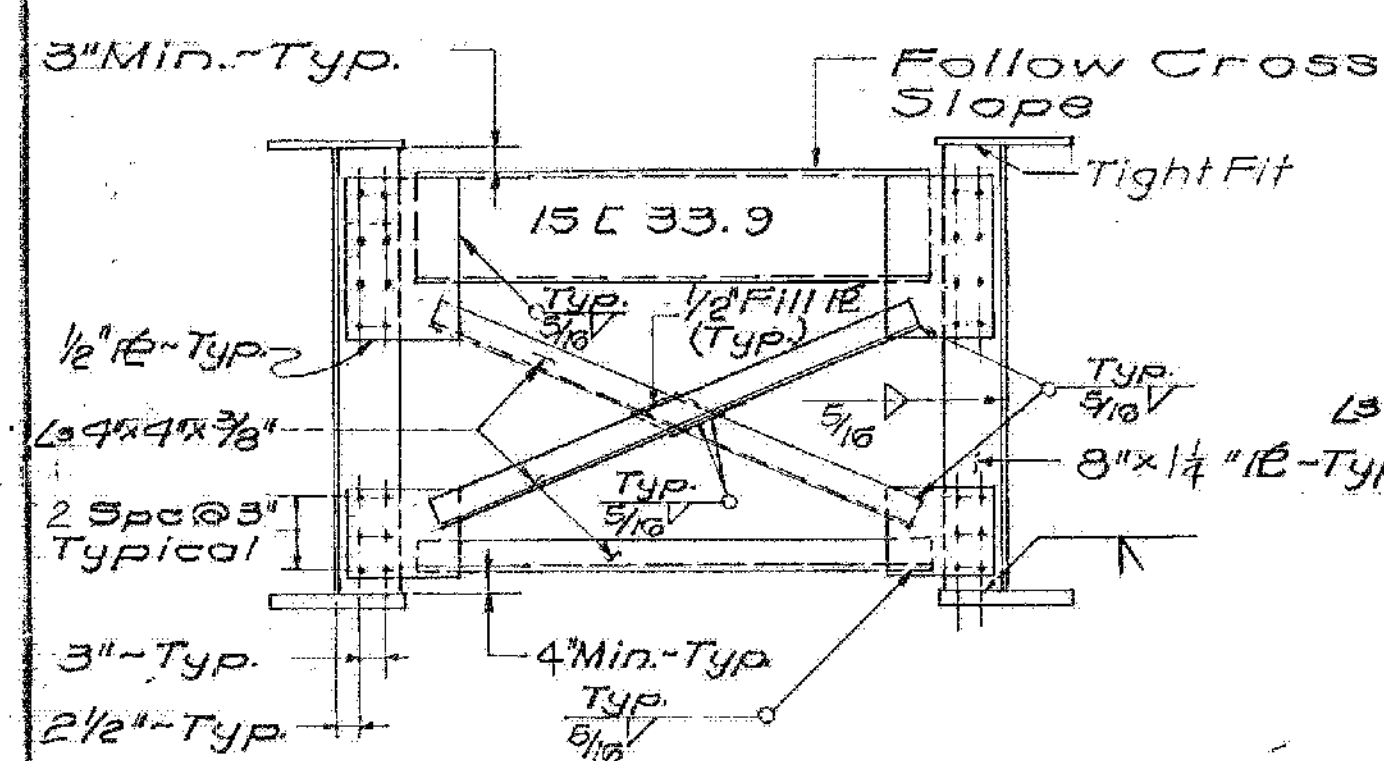


\* For Flange Plates 1/2" or Less In Thickness  
5/16" Fillet Welds Shall Be Used.

GIRDER ELEVATION  
SCALE: 1/8"=1'-0"



PIERS 23,5,8,6  
END CROSS FRAME  
SCALE: 1/2"=1'-0"

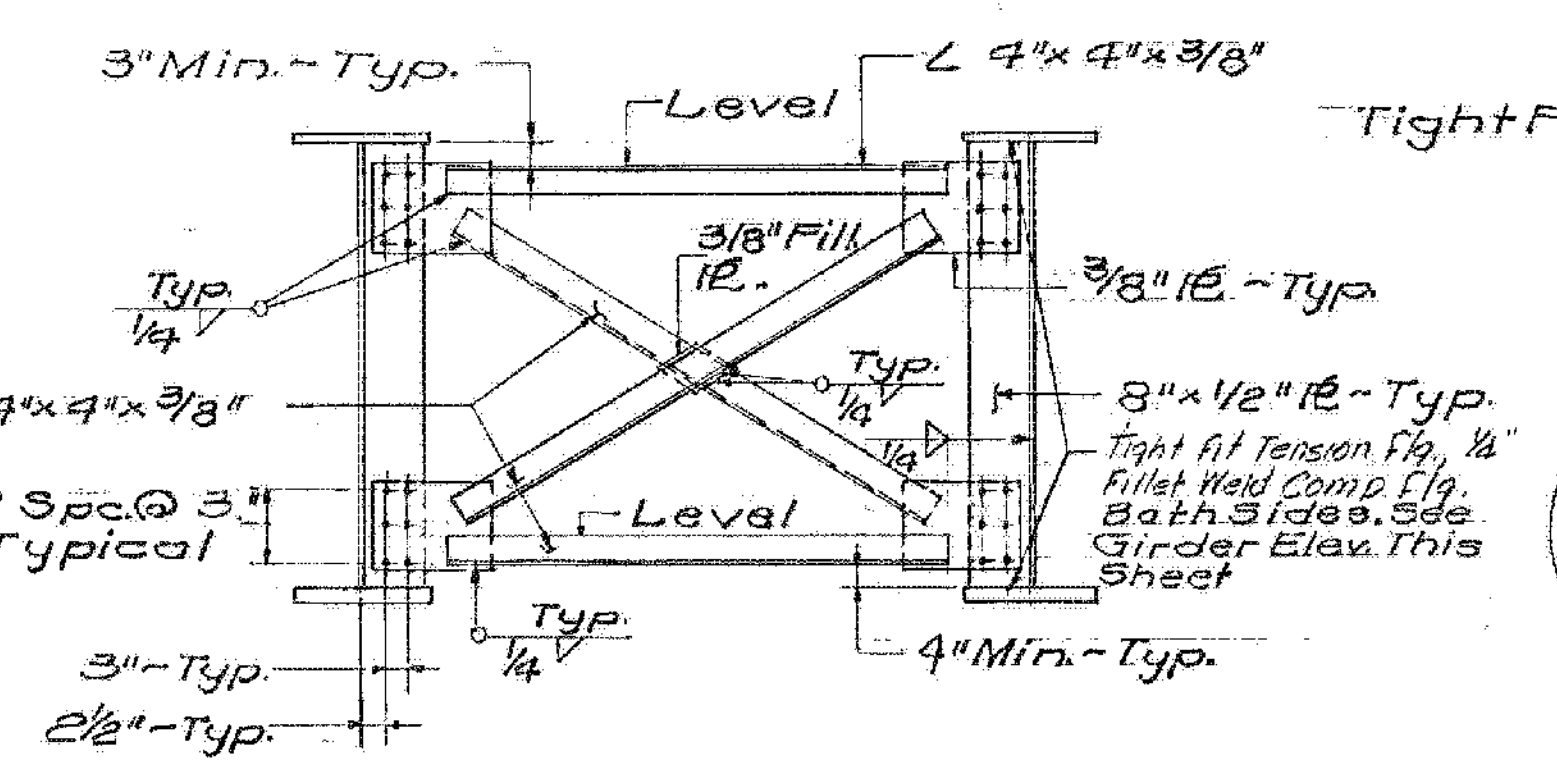
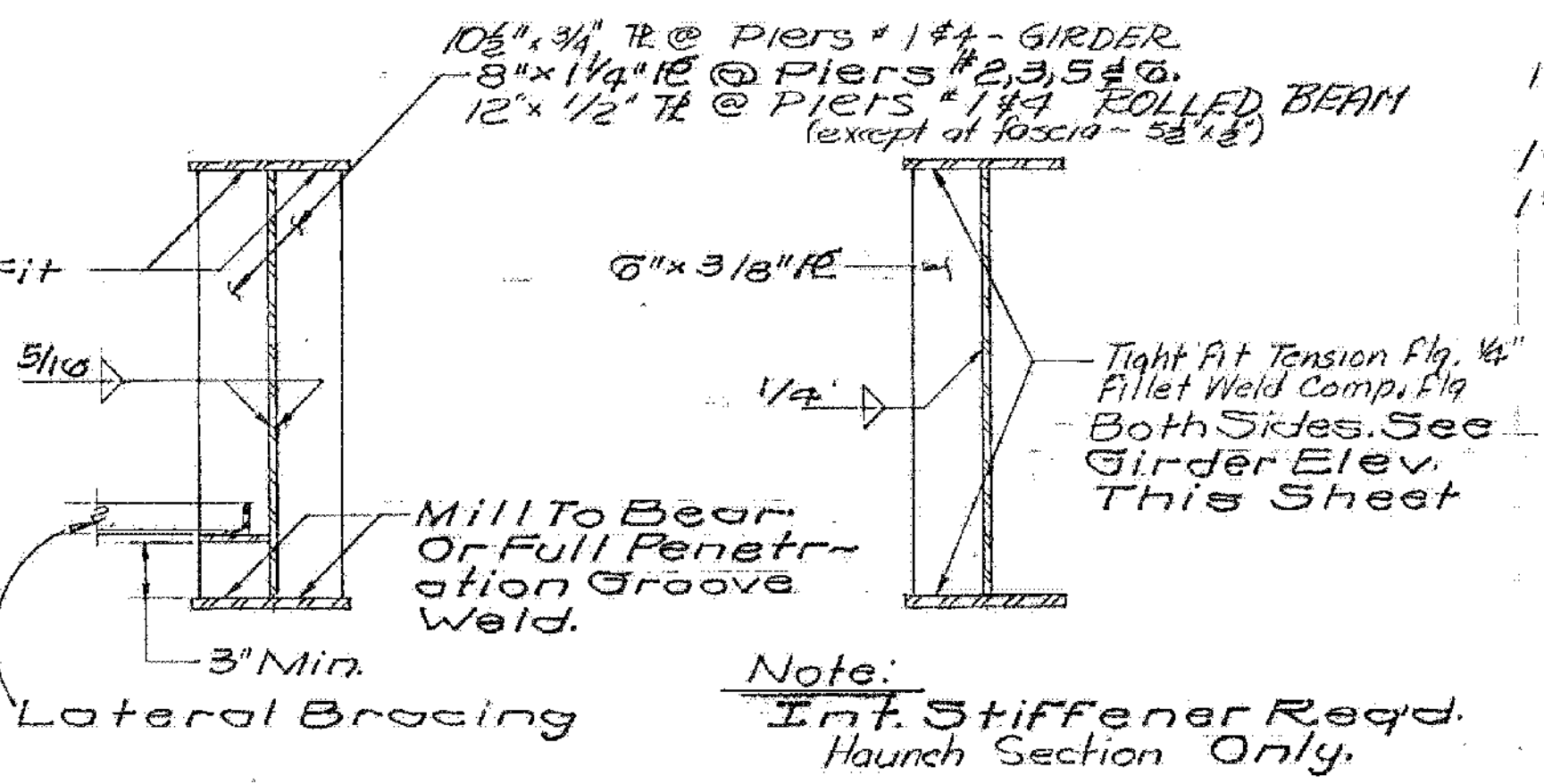
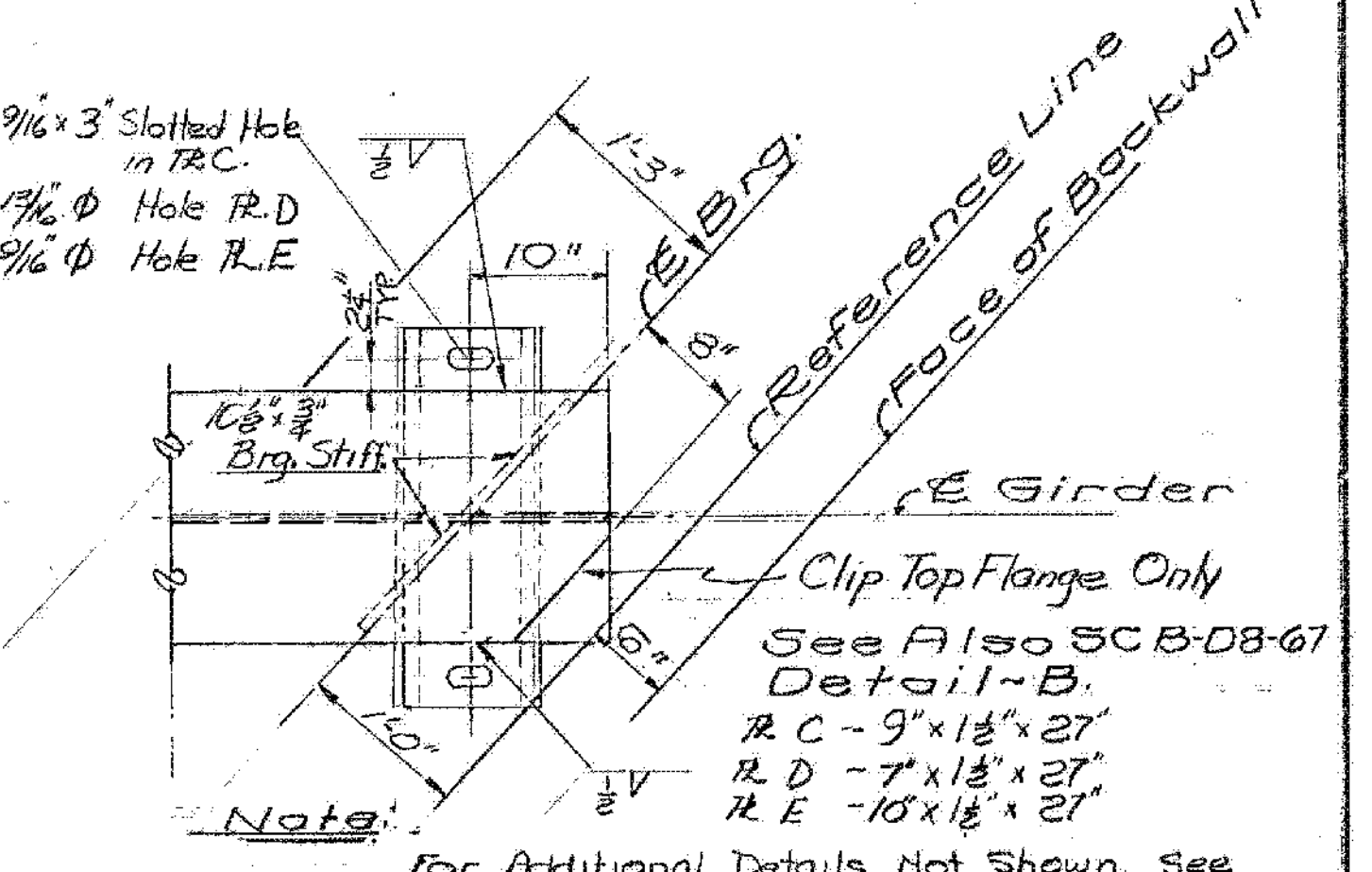


PLATE GIRDER  
INTERMEDIATE CROSS FRAME  
SCALE: 1/2"=1'-0"

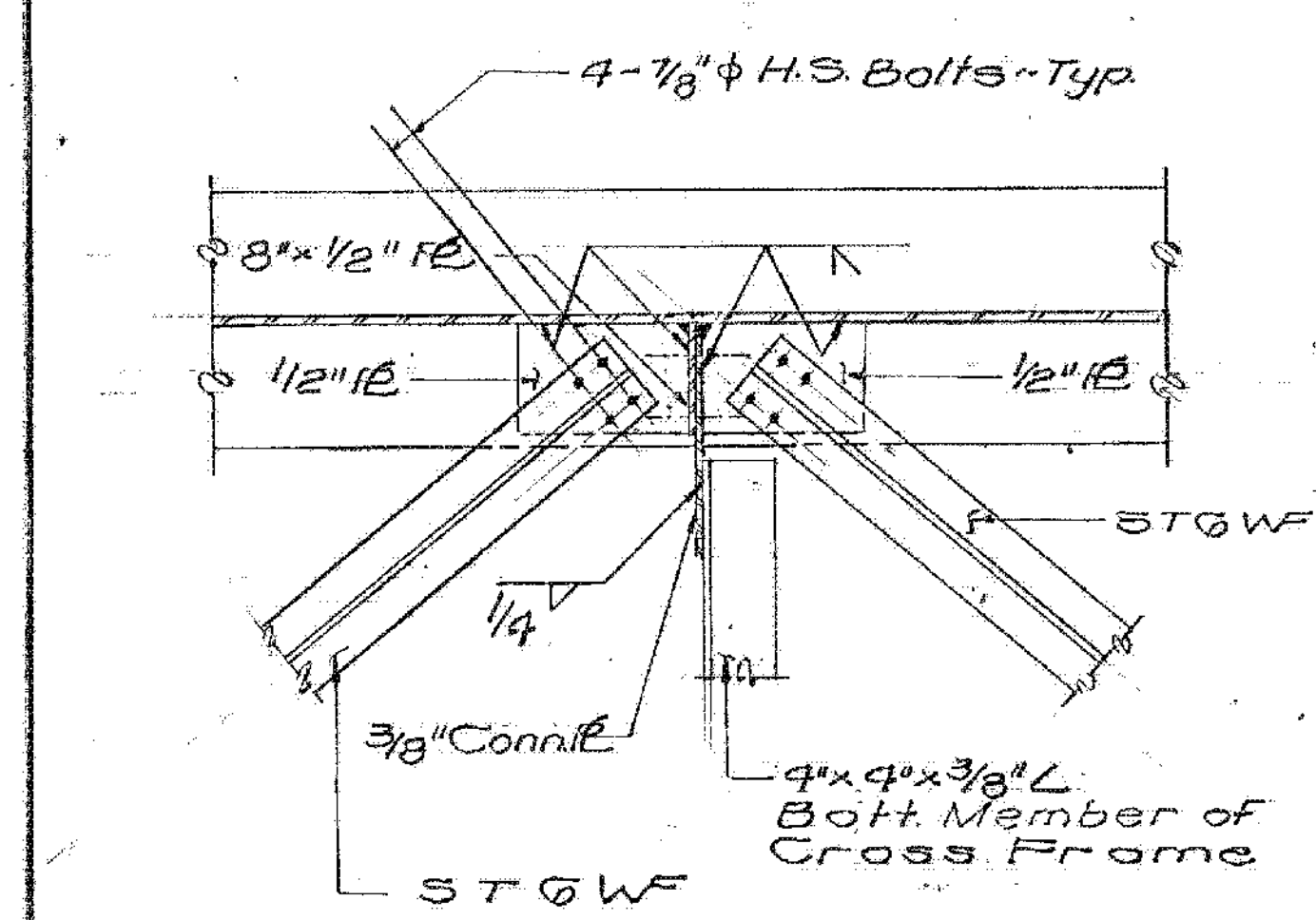


BEARING STIFFENER  
DETAIL  
N.T.S.

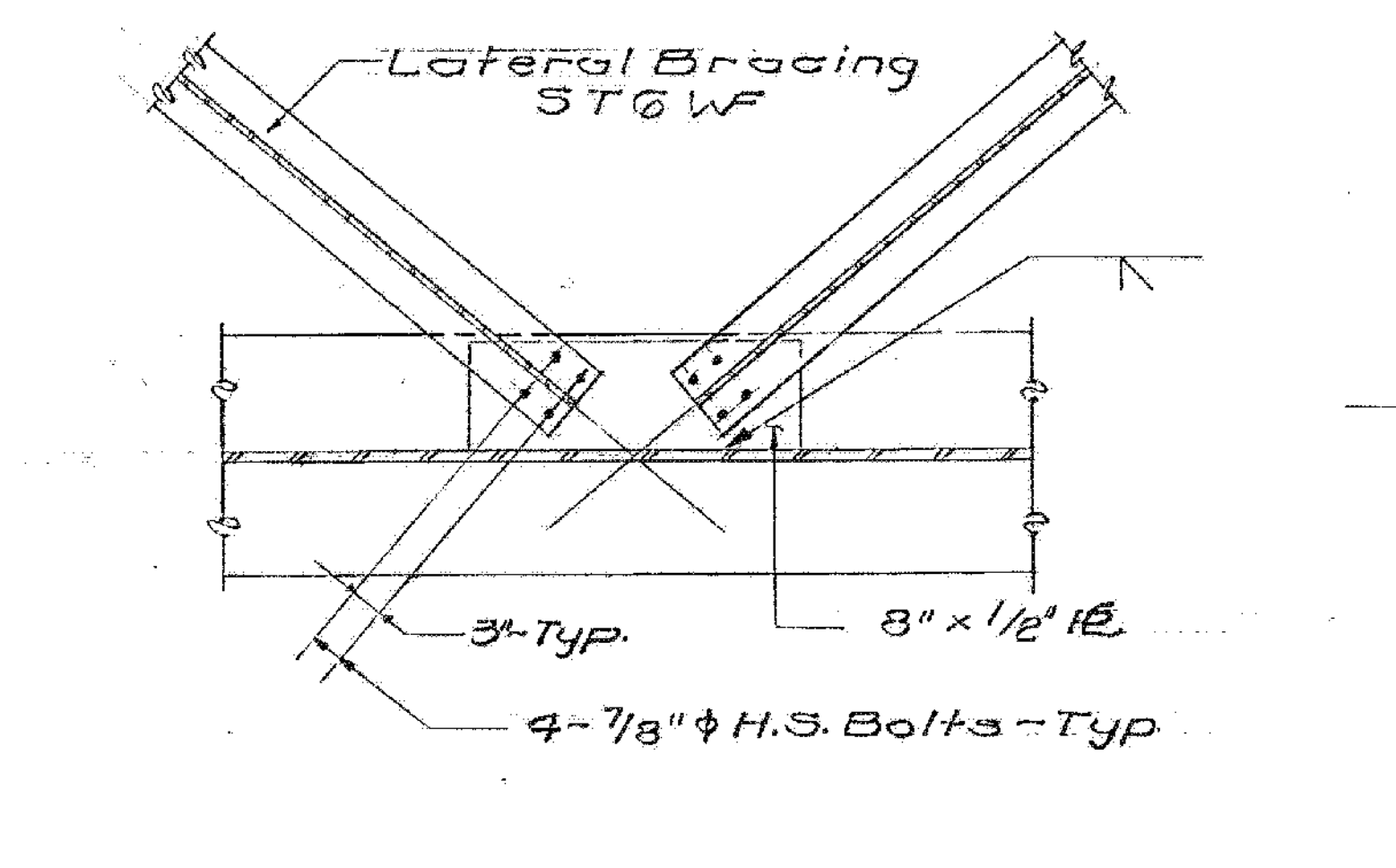
INTERMEDIATE STIFFENER  
DETAIL  
N.T.S.



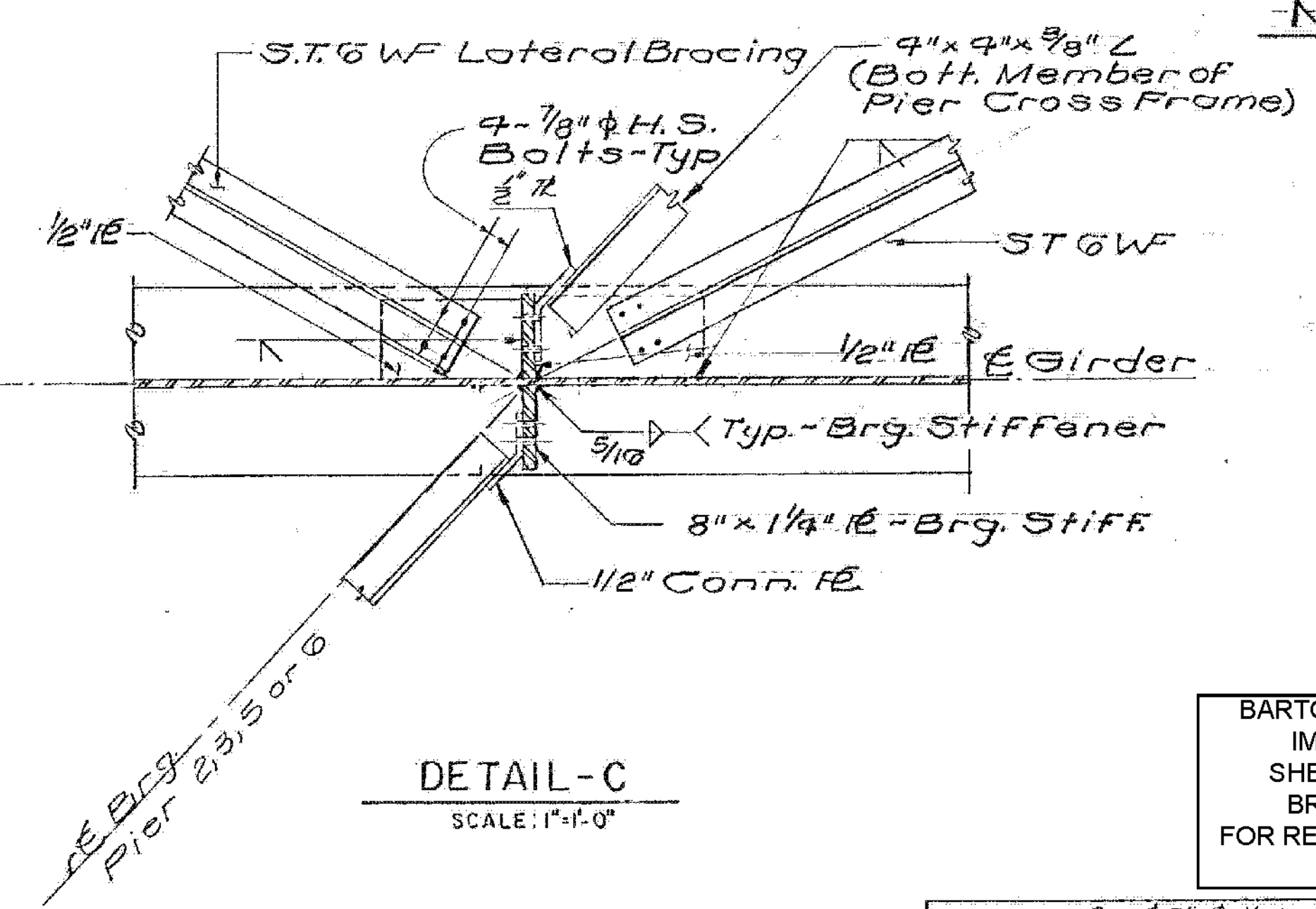
DETAIL OF GIRDER AT ABUT. 2 & 4  
SCALE: 1"=1'-0"



DETAIL-A  
SCALE: 1"=1'-0"



DETAIL-B  
SCALE: 1"=1'-0"



DETAIL-C  
SCALE: 1"=1'-0"

**NOTES:**

1. Intermediate Stiffeners Shall Be Placed on Alternate Sides of Girder Web. Intermediate Stiffeners Shall Not Be Placed on The Outside Face of The Fascia Girder.
2. Bearing and Intermediate Stiff. and Ends of Girders Shall Be Vertical After Application of Full Dead Load.
3. For Detail of Beam at Abutments No. 1 & 3 See Std. SCB-D-9-67 Detail 'A'.
4. Omit Int. Stiffeners at cross frame locations.

BARTON-COVENTRY  
IM BPNT (11)  
SHEET 60 OF 84  
BRIDGE 107S  
FOR REFERENCE ONLY

Δ Cross frame Conn. Flg. IE Thickness Rev. Rev. 8-28-67  
Changed 3/8" Web to 1/2" Web. Removed Int Stiff. Added Cutoff Detail to Flange at Abut 2 & 4. Changed Brg. Stiff Sizes. Revised Connection at Detail C. R. Resh. 5-11-69  
Add Brg. Detail of Abut 2 & 4

<b>STATE OF VERMONT</b> DEPARTMENT OF HIGHWAYS	
PROJECT	IRASBURG-DERBY
TOWN OF	IRASBURG
ROUTE NO.	I-91 LOG STA. 2539±
I-91 OVER BARTON RIVER AND SA#3	
GIRDER ELEVATION & CONN. DETAILS	
SCALE AS NOTED	
IN CHARGE	C. TERENZIO
DRAWN BY	JMB CHECKED BY A. CENTORE
PROJECT NO. I-91 3(8) 9-67	
SHEET 177 OF 605 BR108	