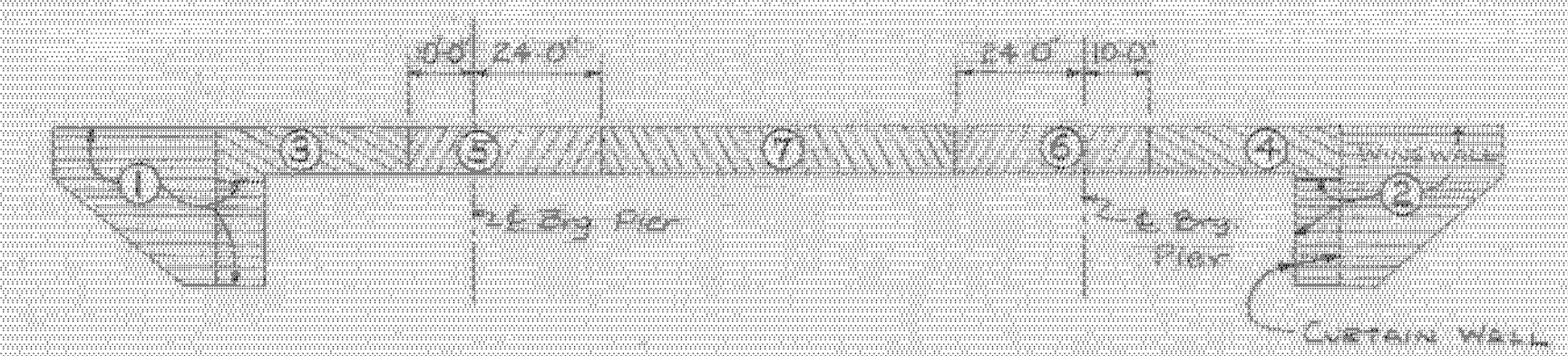
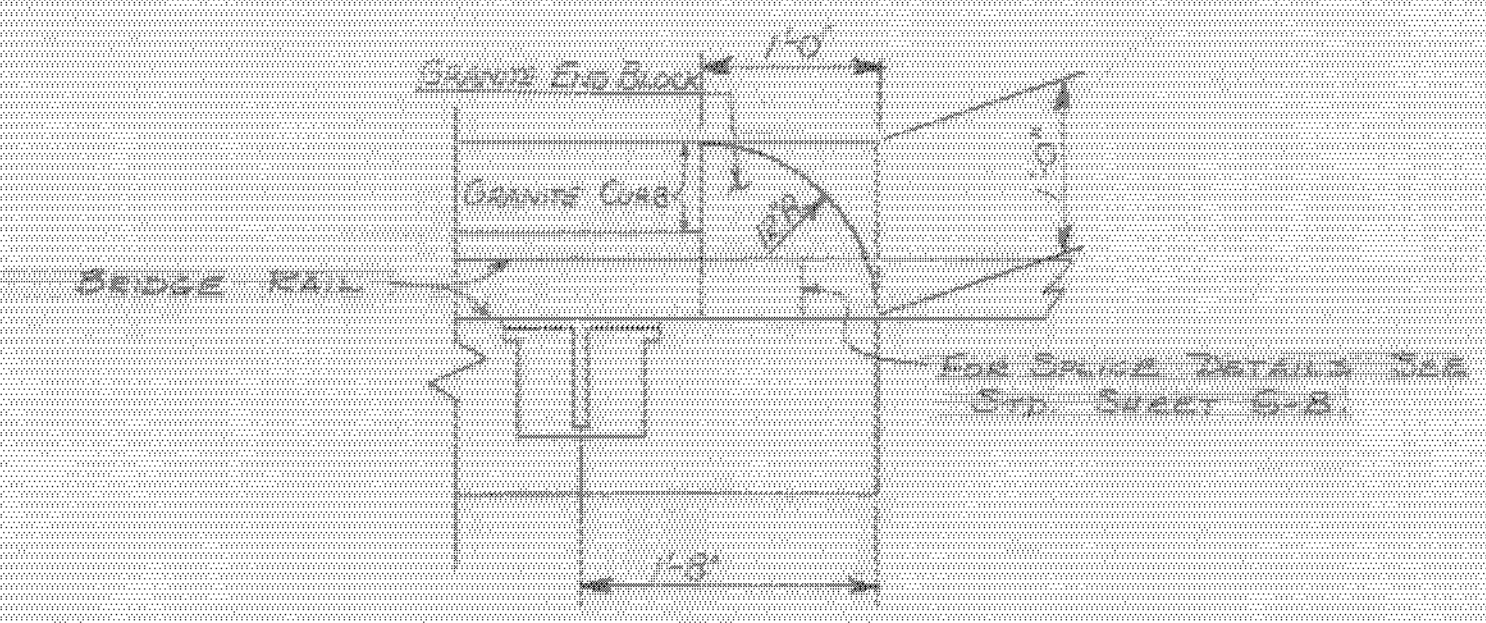


NOTES

1. FOR GENERAL NOTES SEE SHEET BR 101, PLAN AND ELEVATION.
2. FOR BRIDGE RAILING DETAILS SEE SB-R1-64 SHEET 1A, 3B-R2-65 & B-809.
3. FOR DETAILS OF GRANITE CURB SEE SCB-D6-67.
4. ALL DIMENSIONS ARE COMPUTED FOR AIR TEMPERATURE OF 10°F.
5. VARIATIONS FROM THE CONCRETE PLACING DIAGRAM MAY NOT BE MADE WITHOUT THE APPROVAL OF THE ENGINEER.
6. FOR DETAILS OF THE JOINT BETWEEN THE CURTAIN WALL AND APPROACH SLAB SEE SHEET BR 113.
7. THE CONCRETE IN THE DECK AND CURBS SHALL BE CLASS "AA", THE WINGWALLS AND CURTAIN WALLS SHALL BE CLASS "B".



CONCRETE PLACING SEQUENCE DIAGRAM
Typical NB+SB
N.T.S.

(Ba) - ①, ②, etc. indicates the sequence in which sections are to be placed & are also section reference numbers.
(Bb) - The sequence of placing sections 1 & 2, 3 & 4, and also 5 & 6, may be interchanged.

(Bc) - The use of retarder is required in both sections 5 & 6, if these are to be placed during the same day.
(Bd) - If approved by the Engineer, all sections may be placed in the same day providing that the indicated placing sequence is followed & the retarder is used in all sections.

BARTON-COVENTRY
IM BPNT (11)
SHEET 51 OF 84
BRIDGES 106N&S
FOR REFERENCE ONLY

Stage 1 Construction

STATE OF VERMONT	
DEPARTMENT OF HIGHWAYS	
PROJECT: BARTON-IRASBURG	BR # 106
TOWN OF BARTON	I 91 STA. 2450±
ROUTE NO. I 91	I 91 OVER U.S. 5
CURB AND RAILING DETAILS	
SCALE AS SHOWN	
SECTION SUPERVISOR: F. W. BELKUM	8/69
DRAWN BY: J. H. GARDNER	8/69
PROJECT NO. I 91-3(26)	8/69
SHEET 51 OF 113	BR 106