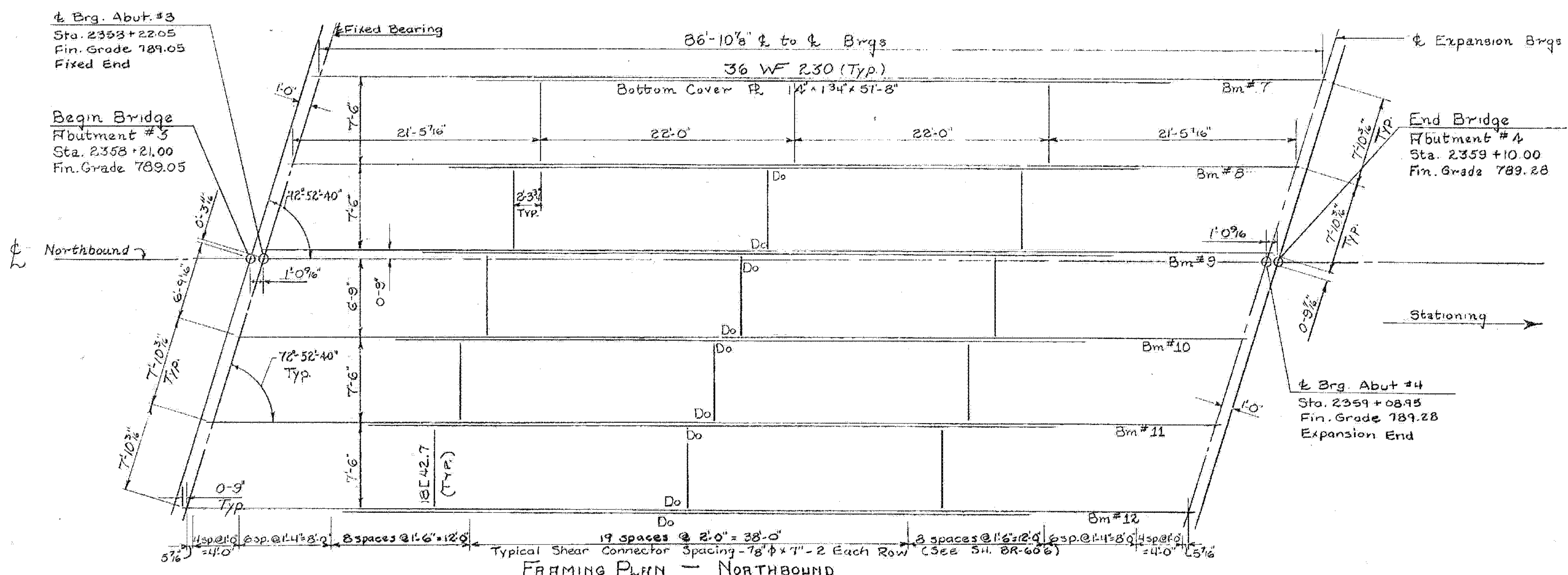
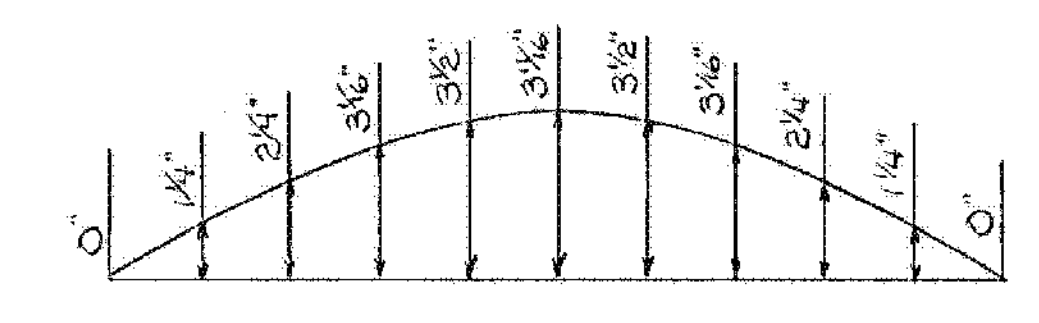


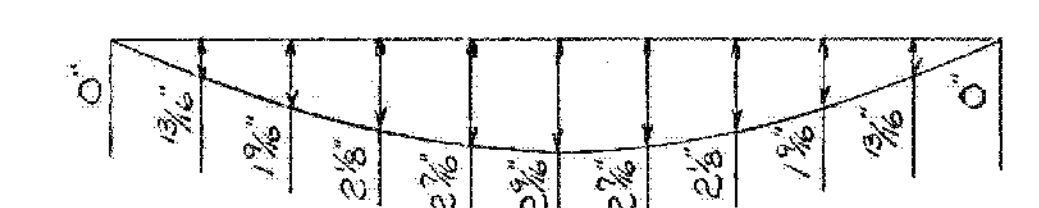
FRAMING PLAN - SOUTHBOUND
Scale 3/16" = 1'-0"



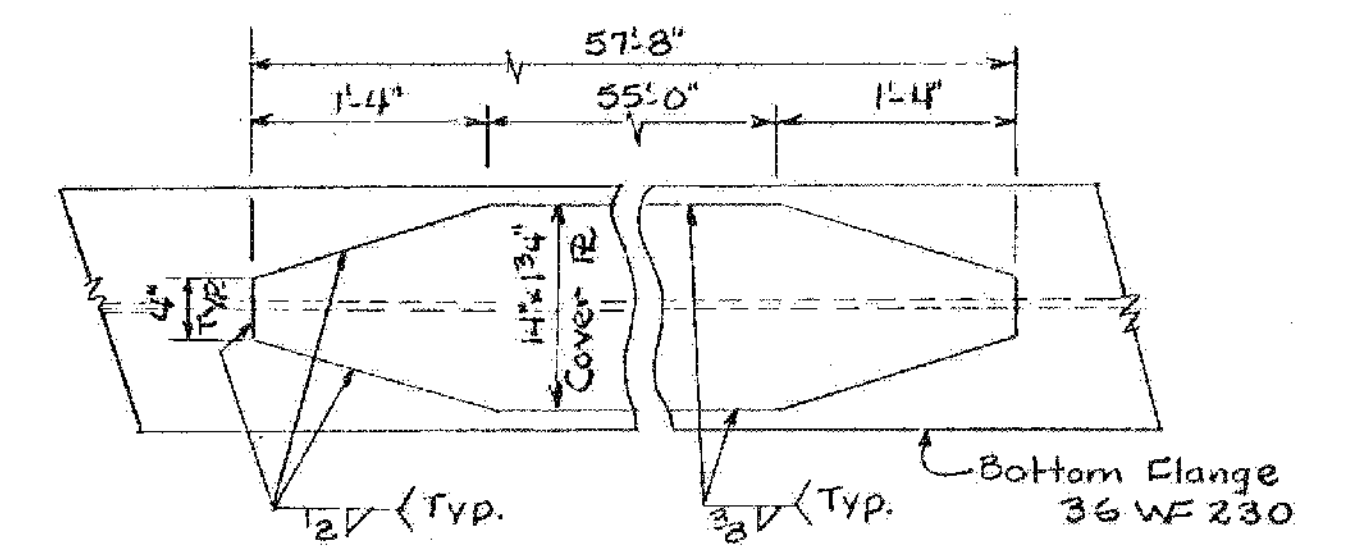
FRAMING PLAN - NORTHBOUND
Scale 3/16" = 1'-0"



CAMBER DIAGRAM
No Scale



DEAD LOAD DEFLECTION DIAGRAM
No Scale



COVER PLATE DETAIL
Scale: 1" = 1'-0"

Notes:

1. WELDING SHALL CONFORM TO SPECIFICATIONS FOR WELDED HIGHWAY AND RAILWAY BRIDGES OF THE AMERICAN WELDING SOCIETY, AWS D2.0-69.
2. THE BEARING DETAILS ARE SHOWN ON STANDARD SHEET SCB-D8-67, DETAILS A & B AND STANDARD SHEET SCB-D9-67, DETAIL A.
3. Maximum Live Load Deflection is 9/16".

BARTON-COVENTRY
IM BPNT (11)
SHEET 39 OF 84
BRIDGES 105N&S
FOR REFERENCE ONLY

Stage I Construction

STATE OF VERMONT
DEPARTMENT OF HIGHWAYS

PROJECT: BARTON BRIDGE 105
TOWN OF BARTON

ROUTE NO. I91 I91 Sta. 2359+25
INTERSTATE I91 over T.H.#29

FRAMING PLAN NB & SB

SCALE AS NOTED

SECTION SUPERVISOR: F.W. Bolcum - 4/70

DRAWN BY: SP/ML CHECKED BY: LADD
DATE: 4-70

PROJECT No. I91-3(11)

SHEET 132 OF 670 BR 605