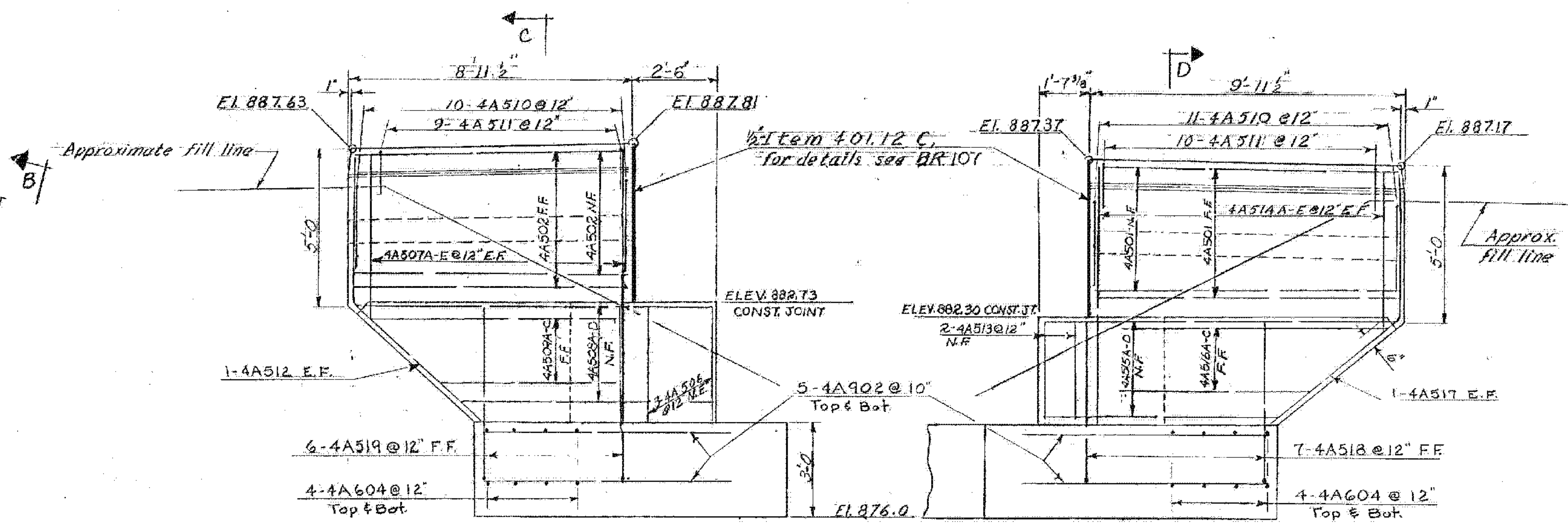
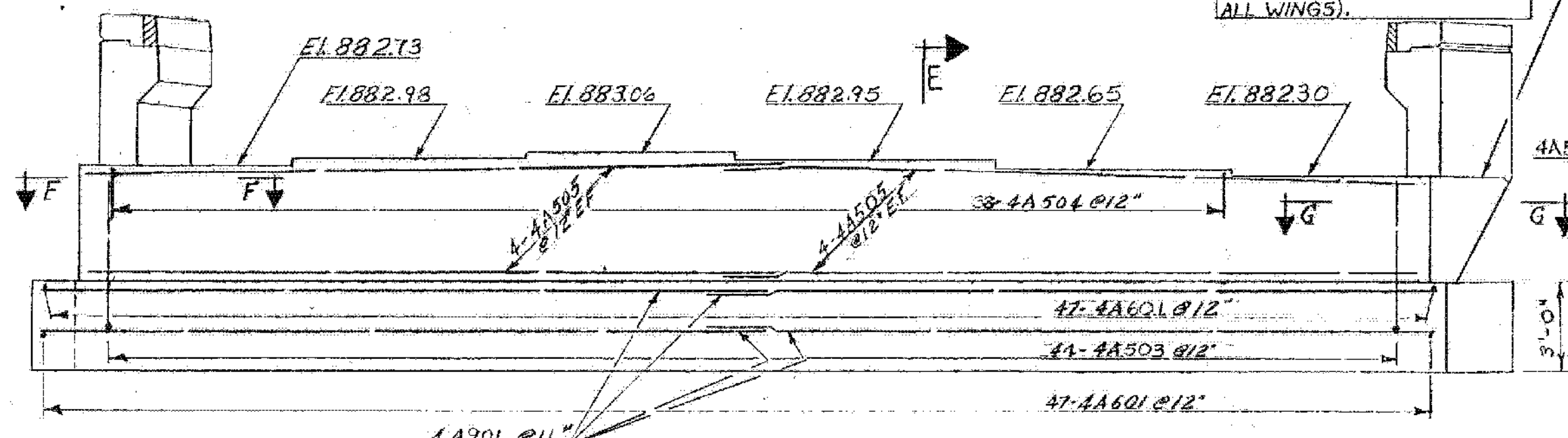


PLAN
Scale: 1/4" = 1'-0"

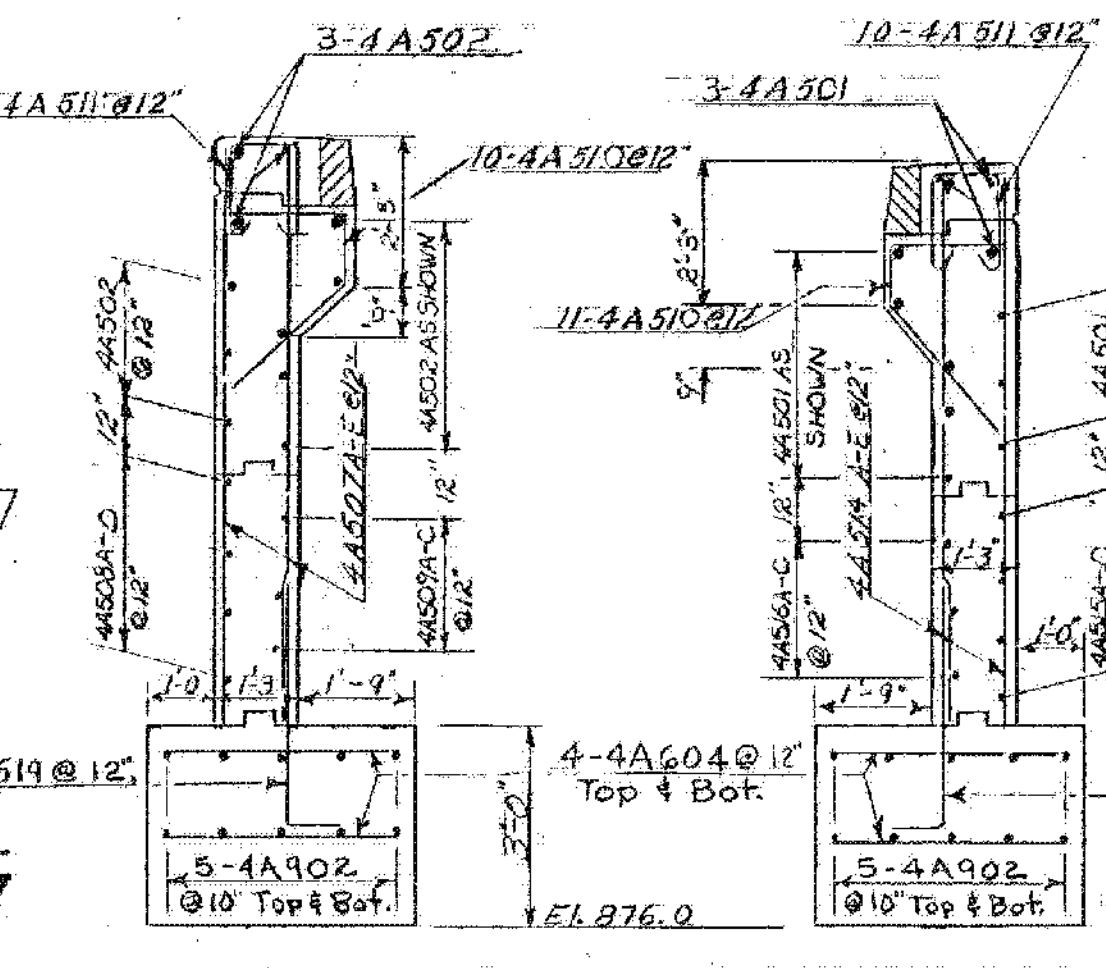


ELEVATION A-A
Scale: 3/8" = 1'-0"

ELEVATION B-B
Scale: 3/8" = 1'-0"

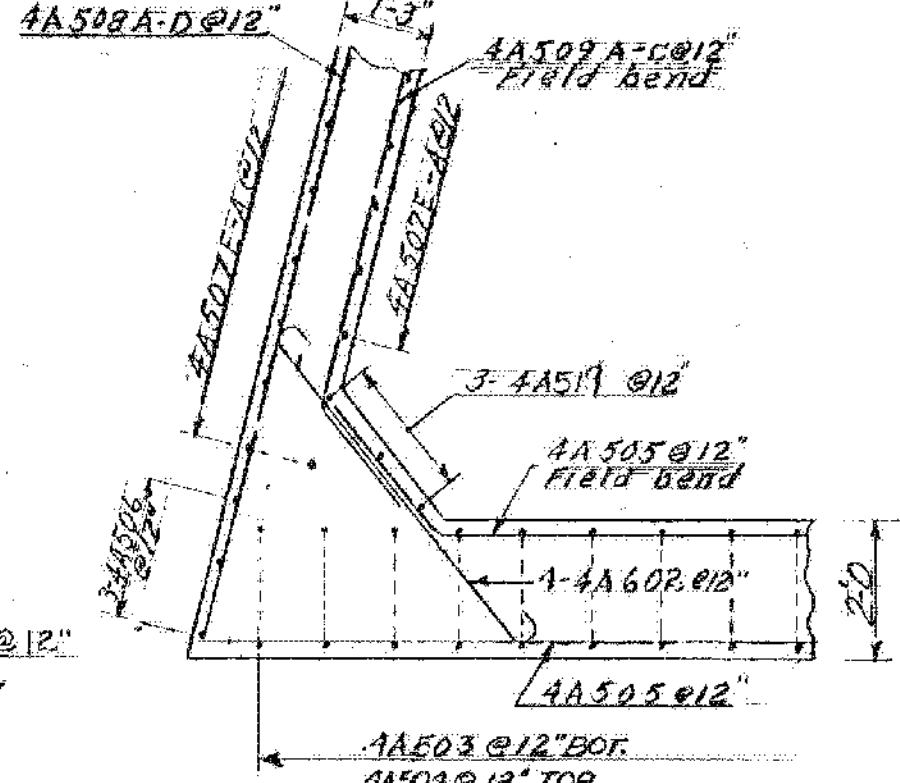


ELEVATION
Scale: 1/4" = 1'-0"

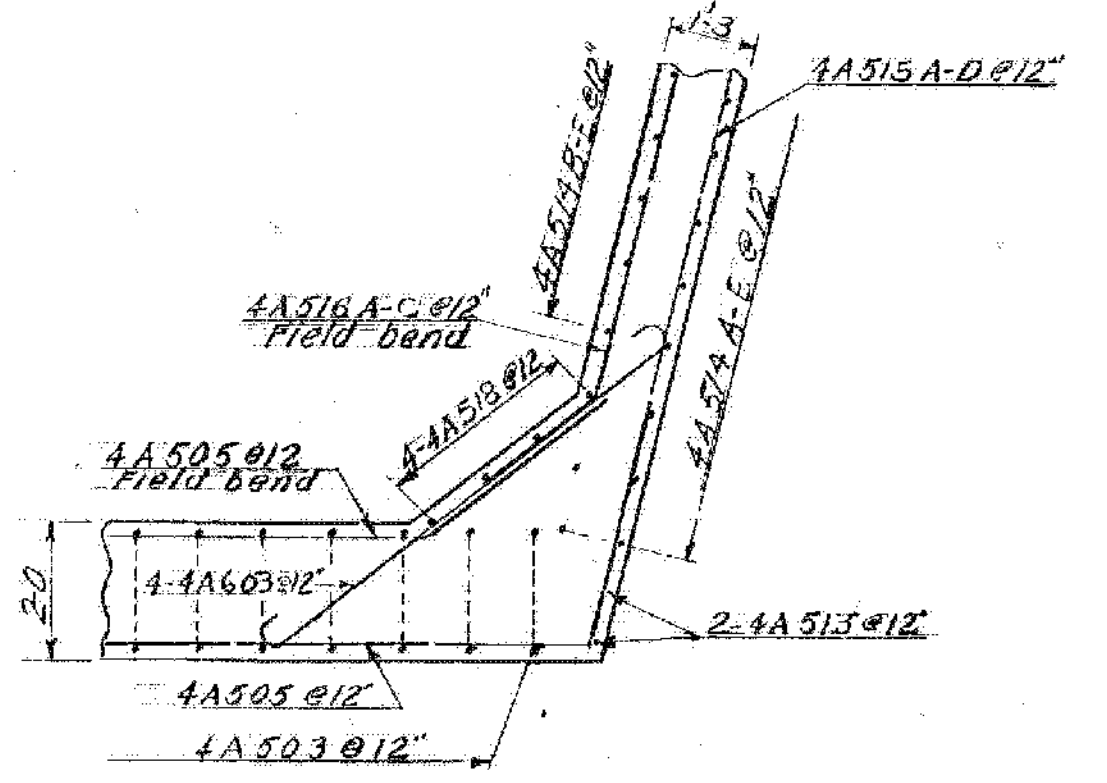


SECTION C-C
Scale: 3/8" = 1'-0"

SECTION D-D
Scale: 3/8" = 1'-0"



SECTION F-F
Scale: 3/8" = 1'-0"



SECTION G-G
Scale: 3/8" = 1'-0"

DO NOT CONSTRUCT ABOVE THIS JOINT UNTIL STRUCTURAL STEEL IS IN PLACE AND FINAL GRADE IS DETERMINED (TYP ALL WINGS).

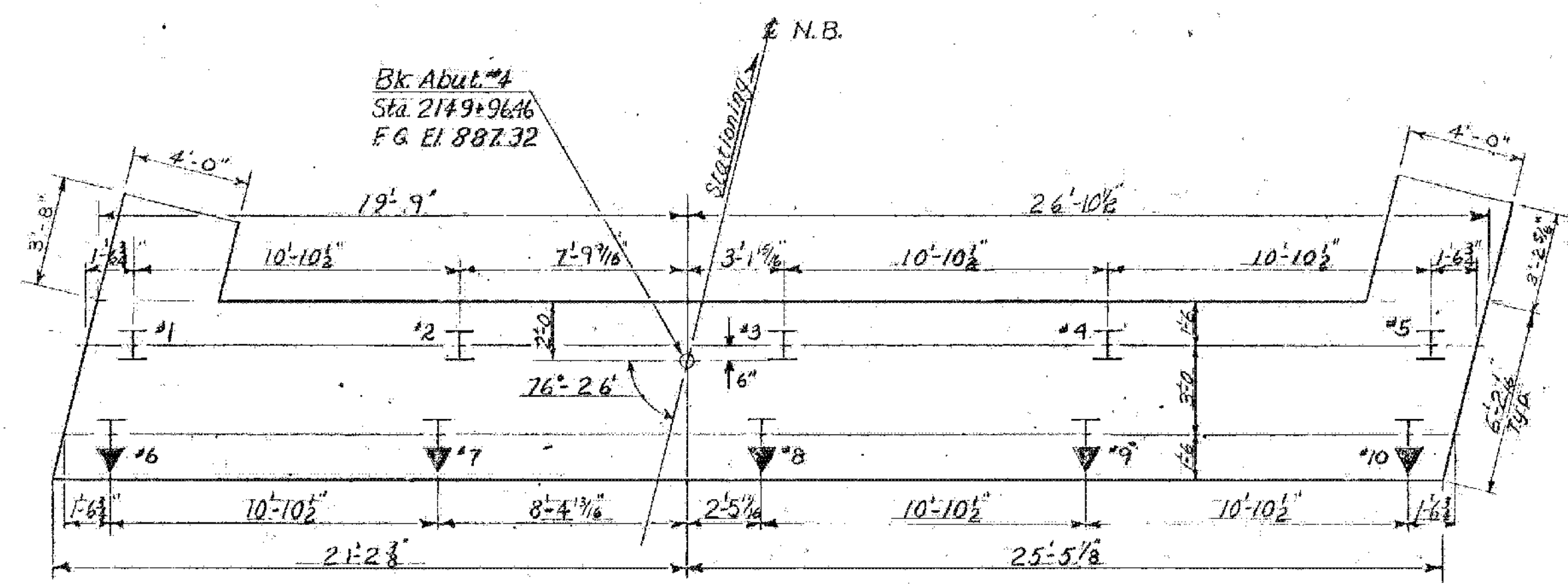
- NOTES
- 1) FOR GENERAL NOTES SEE SHEET BR101, PLAN & ELEVATION
 - 2) FOR ADDITIONAL ABUTMENT NOTES SEE SHEET BR110, ABUTMENT NO. 1 DETAILS & BR-III, ABUTMENT NO. 2 DETAILS.
 - 3) FOR PILING TABLE SEE SHEET BR-110.
 - 4) FOR DETAILS OF SURFACE TREATMENT ON FIXED ABUT. BRIDGE SEATS AND BACKWALL SEE BR 107.

BARTON-COVENTRY
IM BPNT (11)
SHEET 22 OF 84
BRIDGES 102N&S
FOR REFERENCE ONLY

Stage I Construction

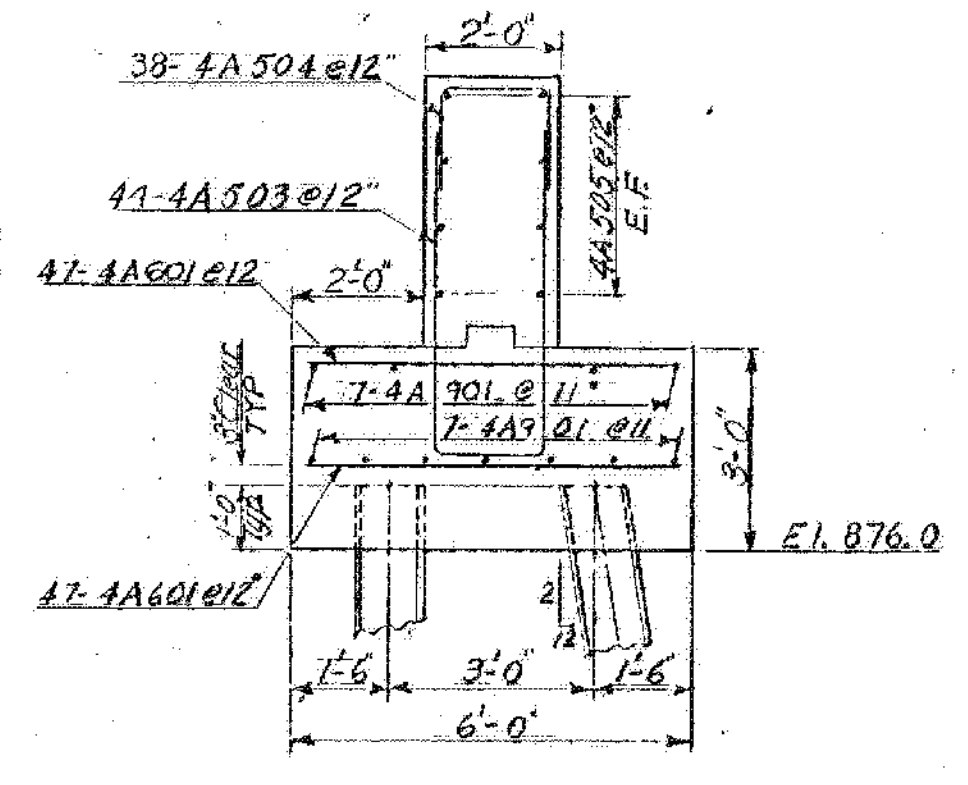
STATE OF VERMONT
DEPARTMENT OF HIGHWAYS

PROJECT BARTON
TOWN OF BARTON BR 102
ROUTE NO. I-91 # STA. 2148+97
INTERSTATE 91 OVER VT. #16
ABUTMENT NO. 4 DETAILS (FIXED)
SCALE AS NOTED
SECTION SUPERVISOR: E. W. Balkum - 4/10
DRAWN BY: [Signature] CHECKED BY: OUELLETTE
PROJECT No. I-91-3(11)
SHEET 125 OF 670 BR 113



FOOTING PLAN
Scale: 1/4" = 1'-0"

Denotes 2 in 12 Pile Batter direction.
Estimated length of 12 BP 53 Steel H
Piles is 60 ft.



SECTION E-E
Scale: 3/8" = 1'-0"