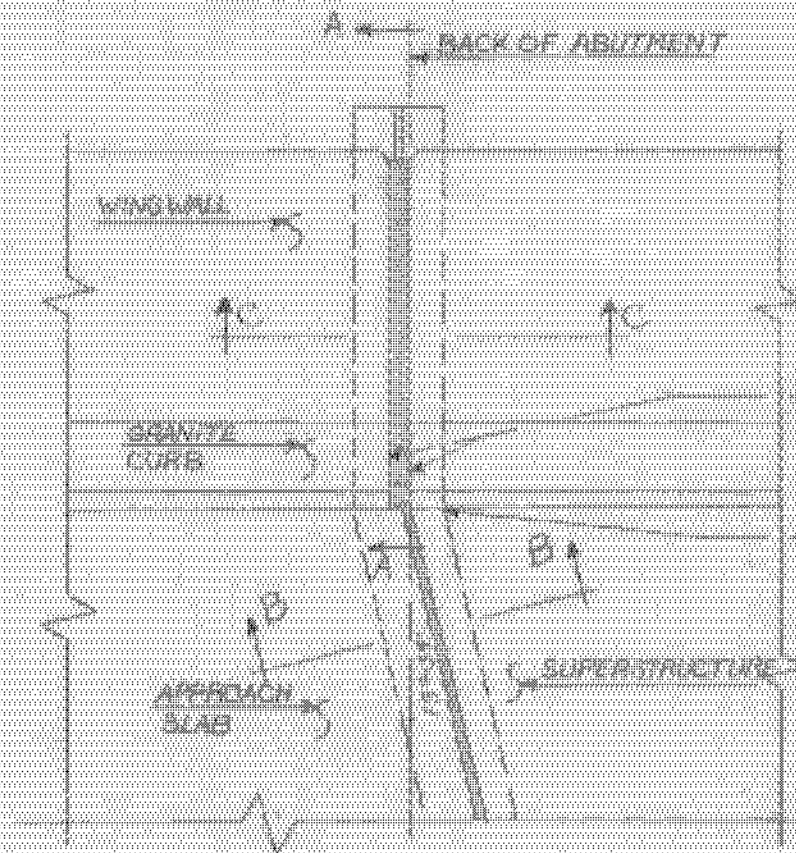
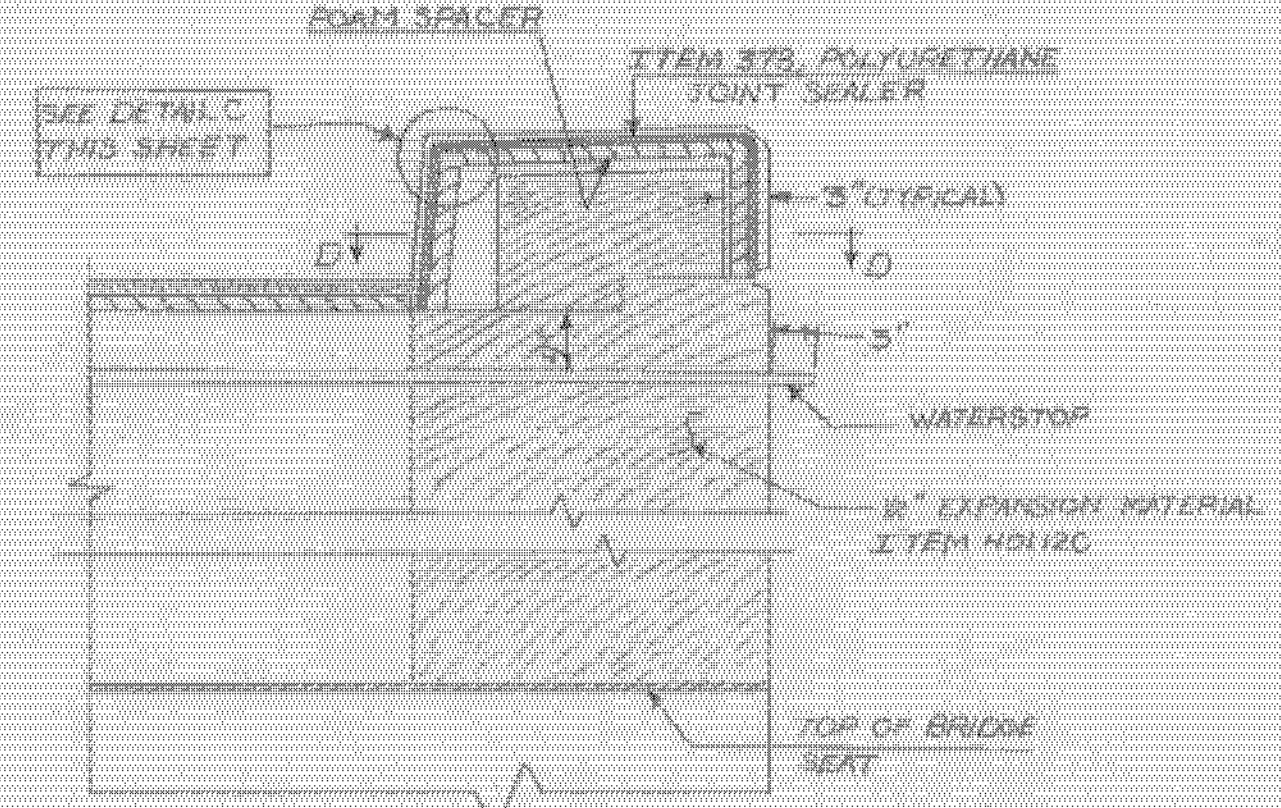


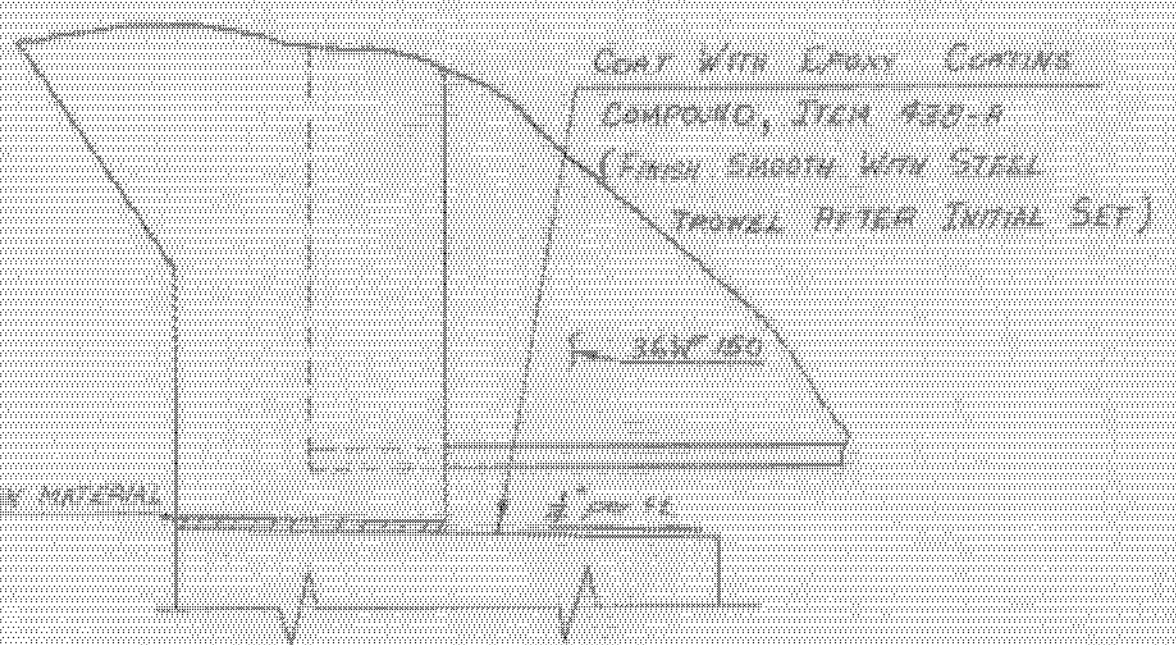
CURTAIN WALL DETAILS (SECTION B-B)
SCALE: 1/2" = 1'-0"



PLAN
SCALE: 1" = 1'-0"

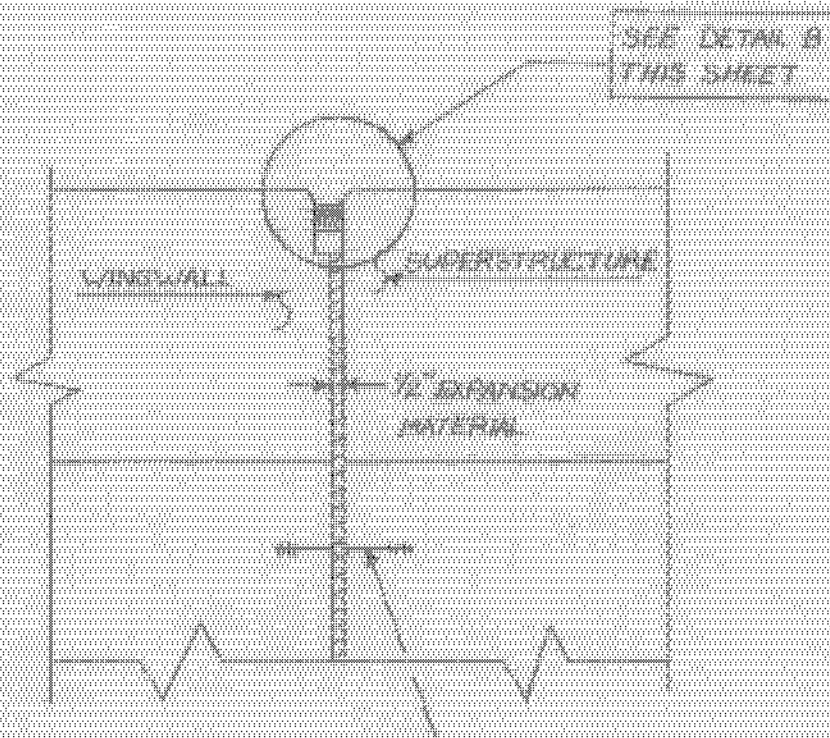


SECTION A-A
SCALE: 1" = 1'-0"

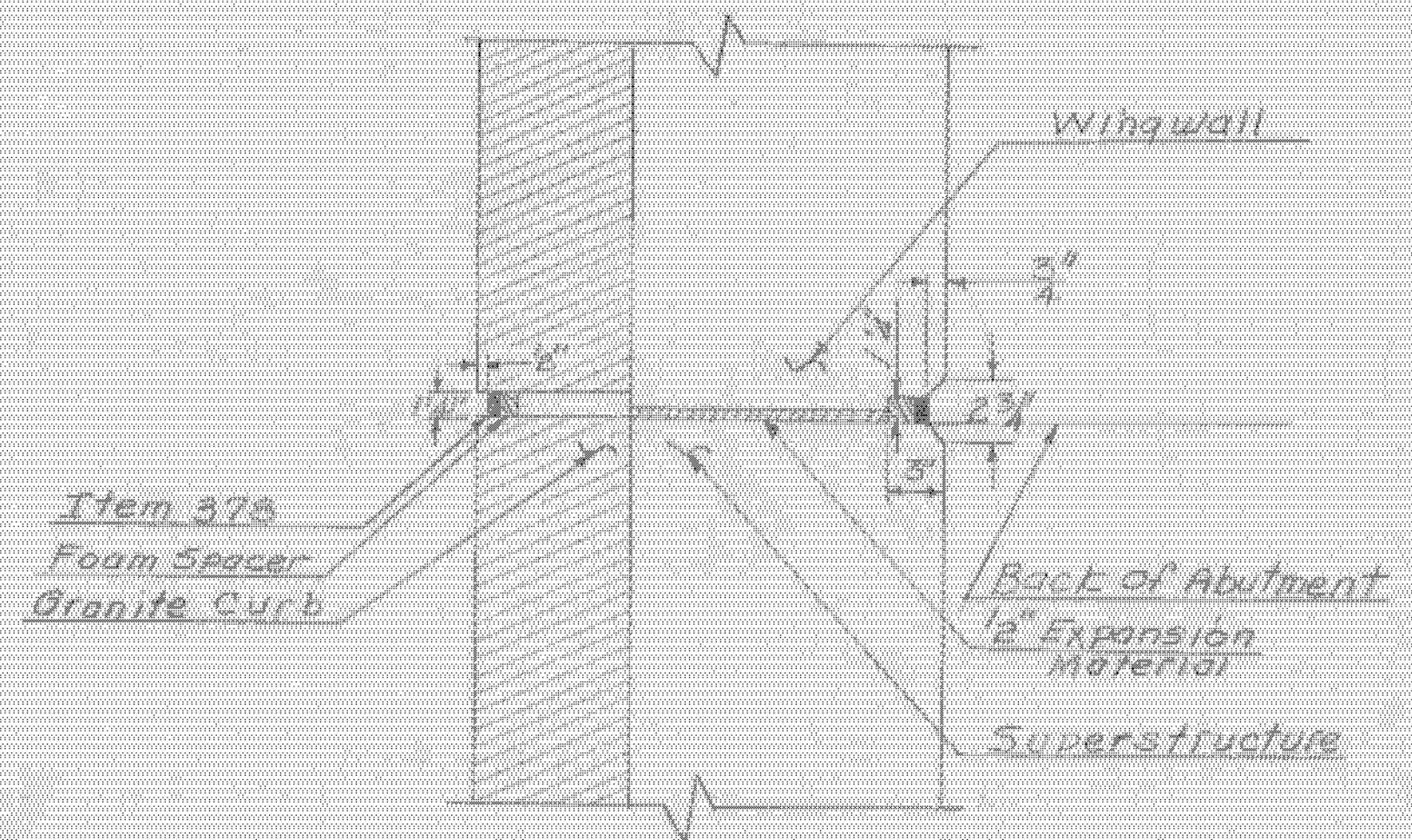


DETAIL OF BRIDGE SEAT TREATMENT - FIXED ABUTMENTS
(REFER TO NOTE 14, OR STD. 58, 506, 61-67 FOR SPECIFICATIONS REGARDING SLOPING OF BRIDGE SEATS)

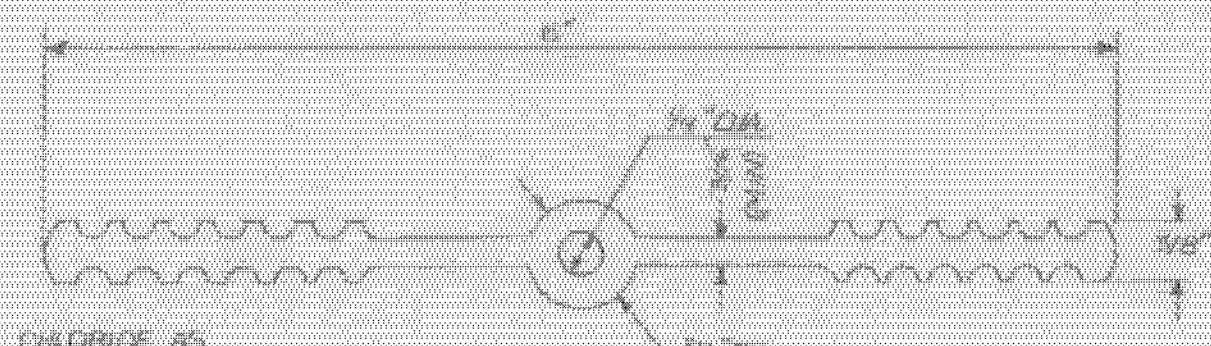
SCALE: 1/2" = 1'-0"



SECTION C-C
SCALE: 1 1/2" = 1'-0"



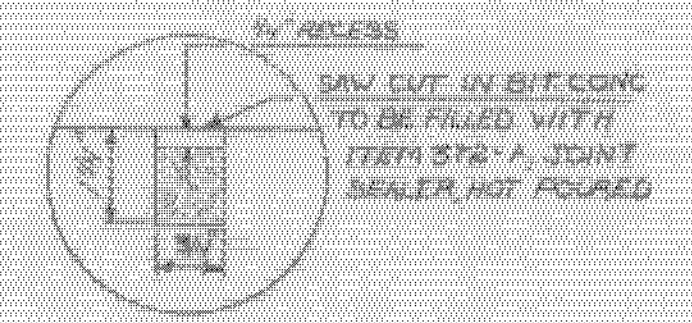
SECTION D-D
SCALE: 1/2" = 1'-0"



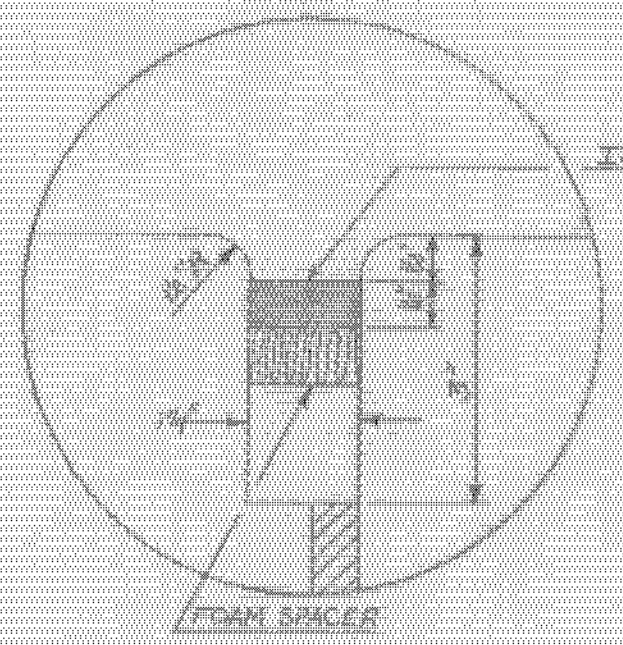
WATERSTOP DETAIL
SCALE: 1" = 1'-0"

NOTES

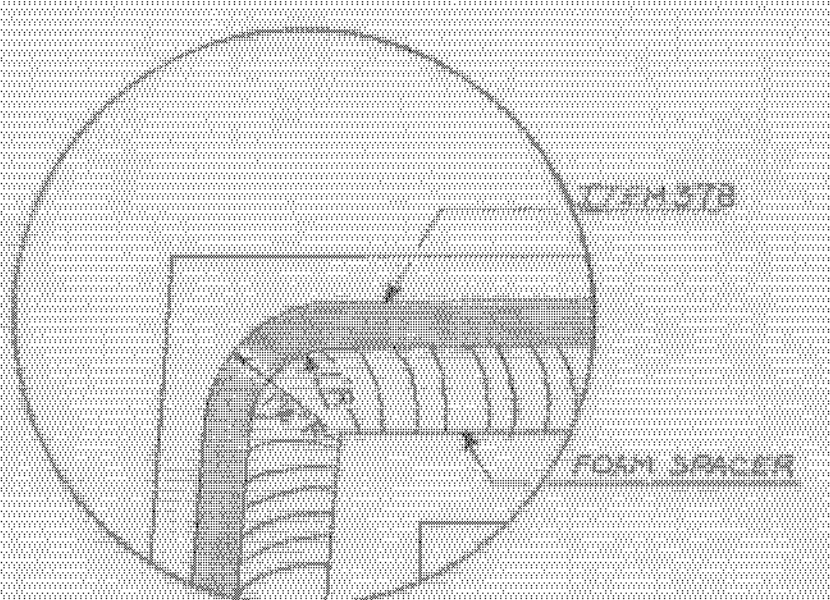
- 1) MATERIAL TO BE POLYVINYL CHLORIDE, AS SPECIFIED IN ITEM 405.2 H, OTHER CONFECTIONS, WITH MINOR DIMENSION VARIATIONS, MAY BE USED WITH THE APPROVAL OF THE BRIDGE ENGINEER.
- 2) COST OF THE WATERSTOP AND PAINT WATERPROOFING SHALL BE INCLUDED IN THE UNIT PRICE BID FOR ITEM 405, CONCRETE CLASS A-1, AND THE PAINT WATERPROOFING SHALL CONFORM TO THE SPECIFICATIONS FOR ITEM 405.
- 3) THE CONTRACTOR SHALL PROVIDE ADEQUATE SUPPORT TO MAINTAIN ALIGNMENT OF WATERSTOP DURING CONSTRUCTION.



DETAIL A
SCALE: N.T.S.



DETAIL B
SCALE: 1" = 2"



DETAIL C
SCALE: 1" = 2"

BARTON-COVENTRY
IM BPNT (11)
SHEET 16 OF 84
BRIDGES 102N&S
FOR REFERENCE ONLY

Stage 1 Construction

STATE OF VERMONT	
DEPARTMENT OF HIGHWAYS	
PROJECT: BARTON TOWN OF BARTON	BR 102
ROUTE No. 171	STATION 2198+97
INTERSTATE 91 OVER VT. 16	
FIXED END DETAILS	
SCALE AS SHOWN	
SECTION SUPERVISOR: F.W. BaKum	4/90
DRAWN BY: JMM	CHECKED BY: OUELLETTE
PROJECT NO. 171(30)	
SHEET 119 OF 670 BA107	