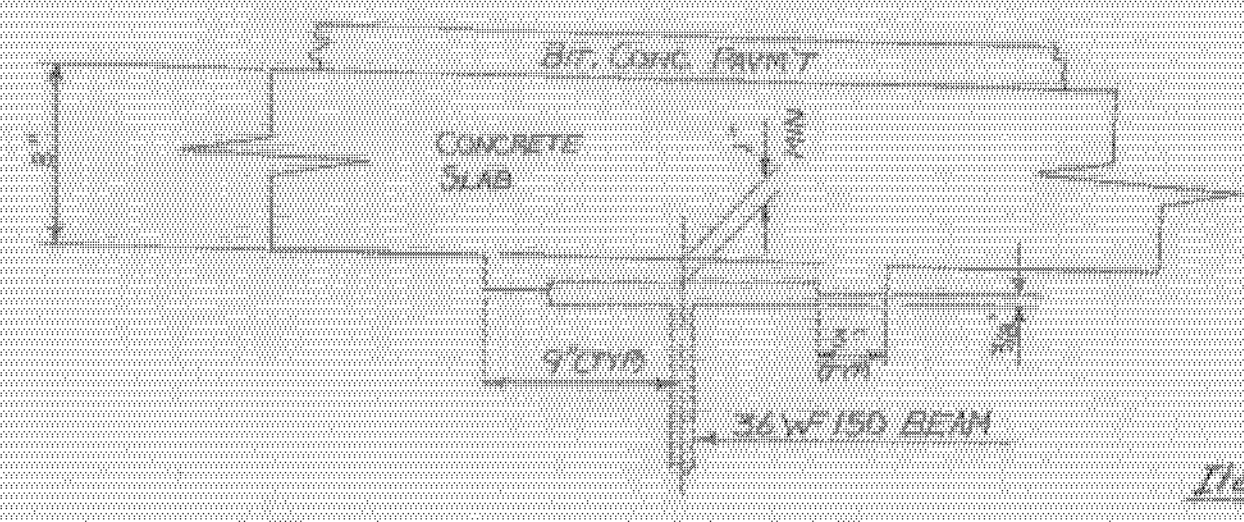
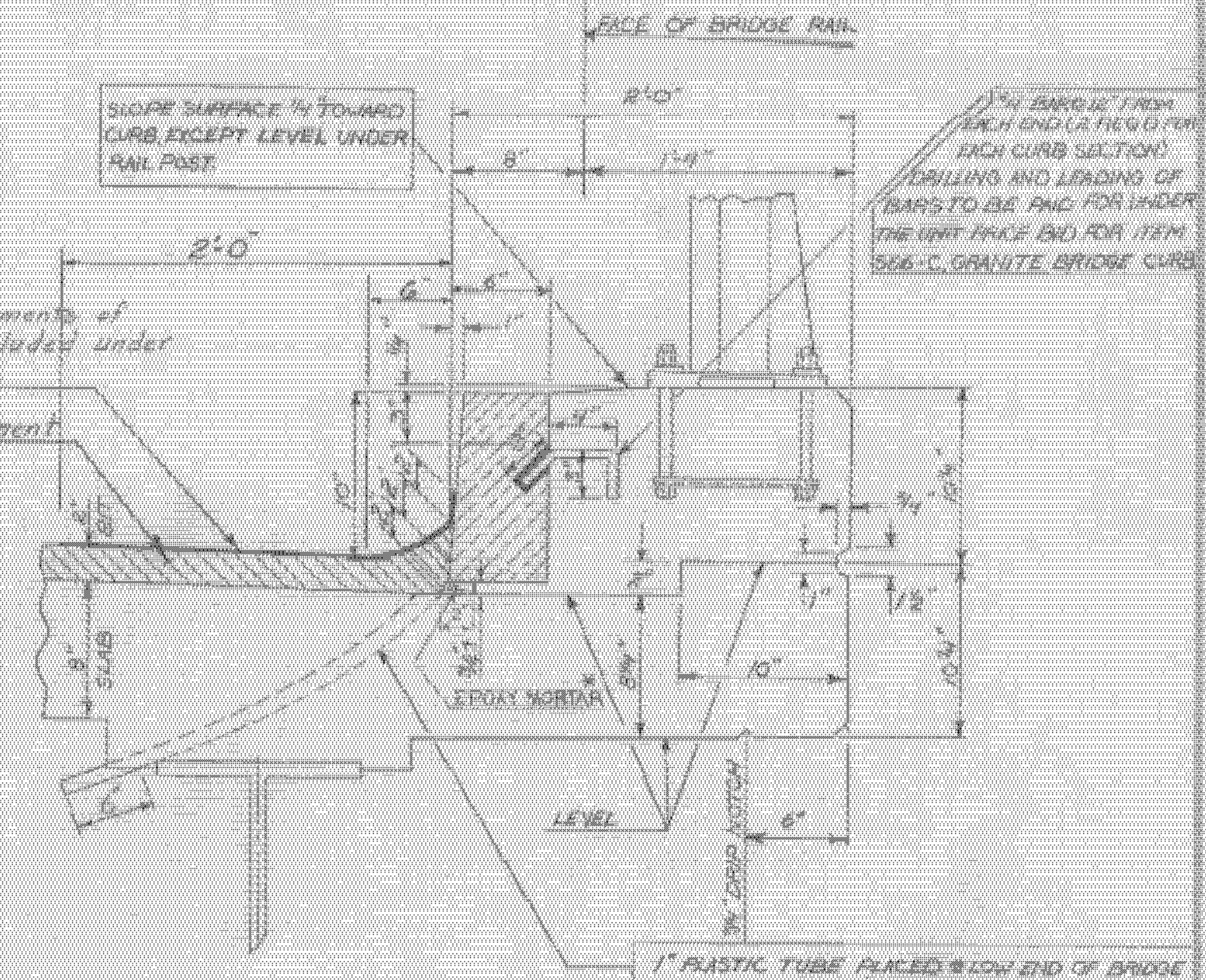


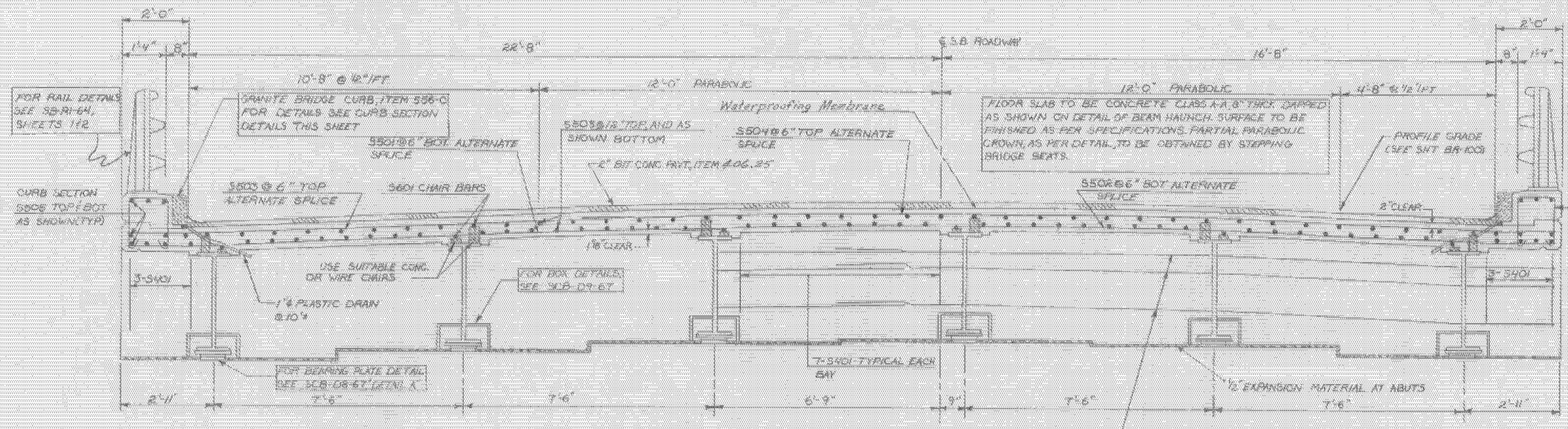
DETAIL OF PARTIAL PARABOLIC CROWN OF SLAB
SCALE: 1/4" = 1'-0"



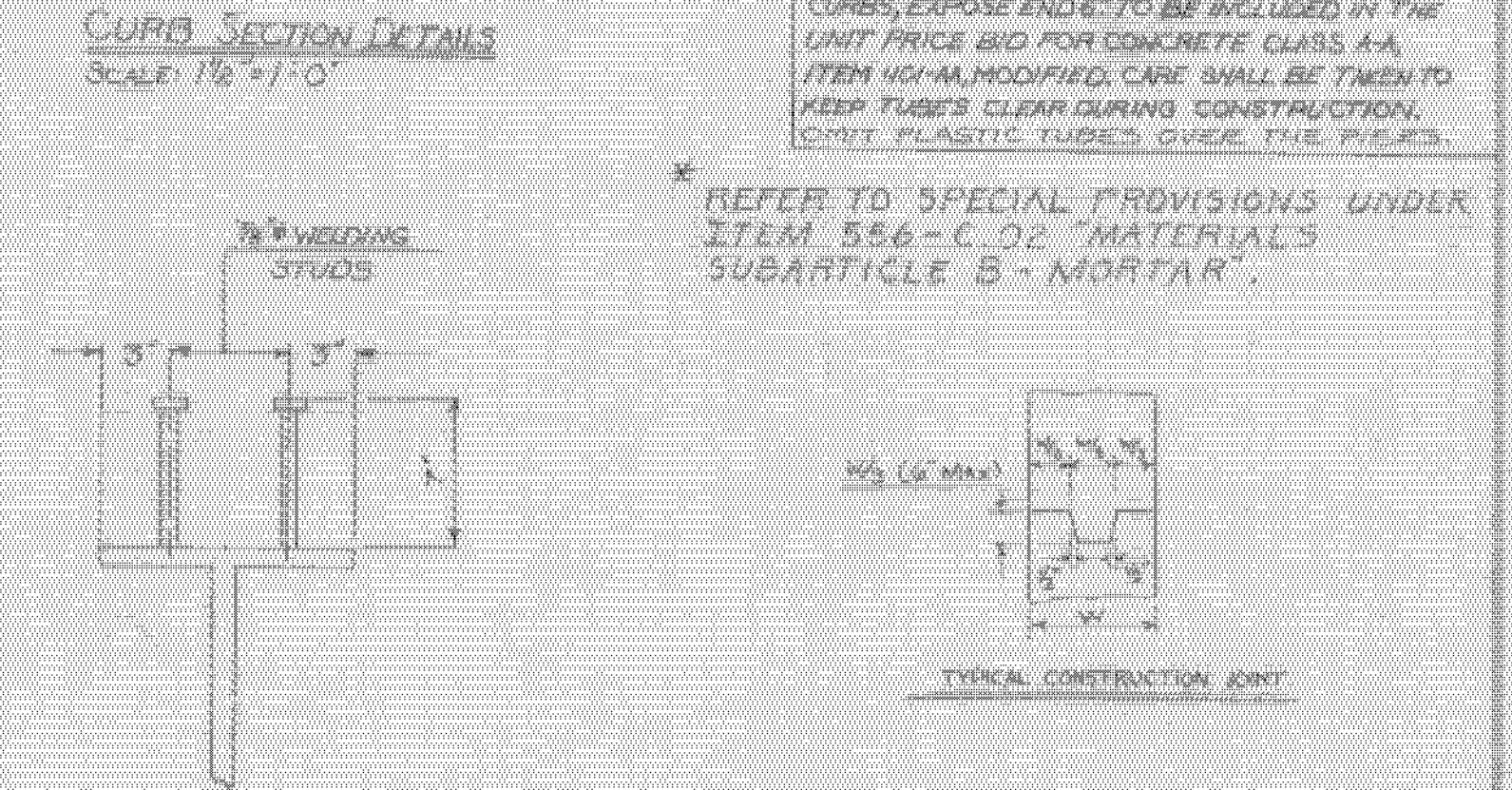
BEAM HAUNCH DETAIL
SCALE: 1/2" = 1'-0"



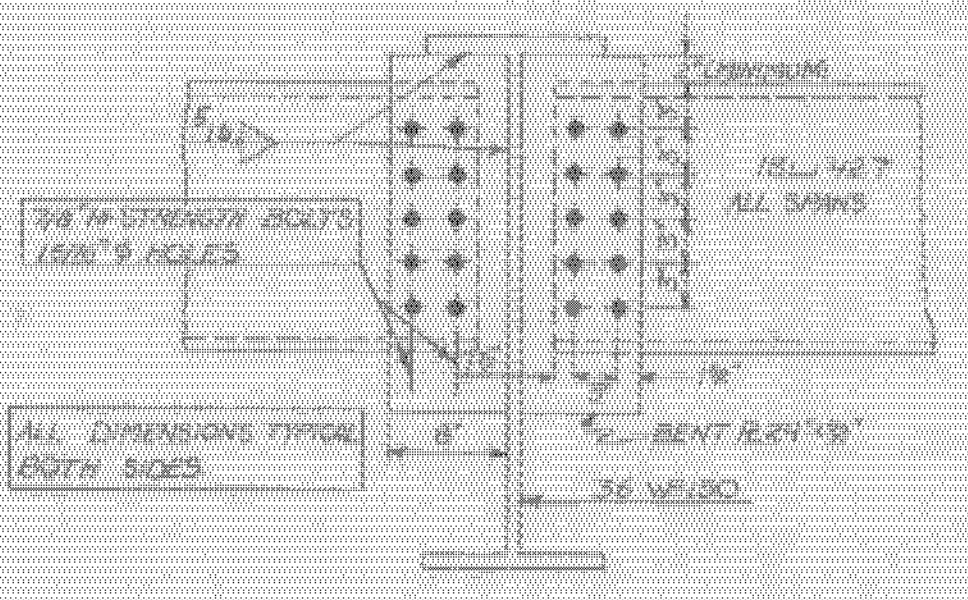
CURB SECTION DETAILS
SCALE: 1/8" = 1'-0"



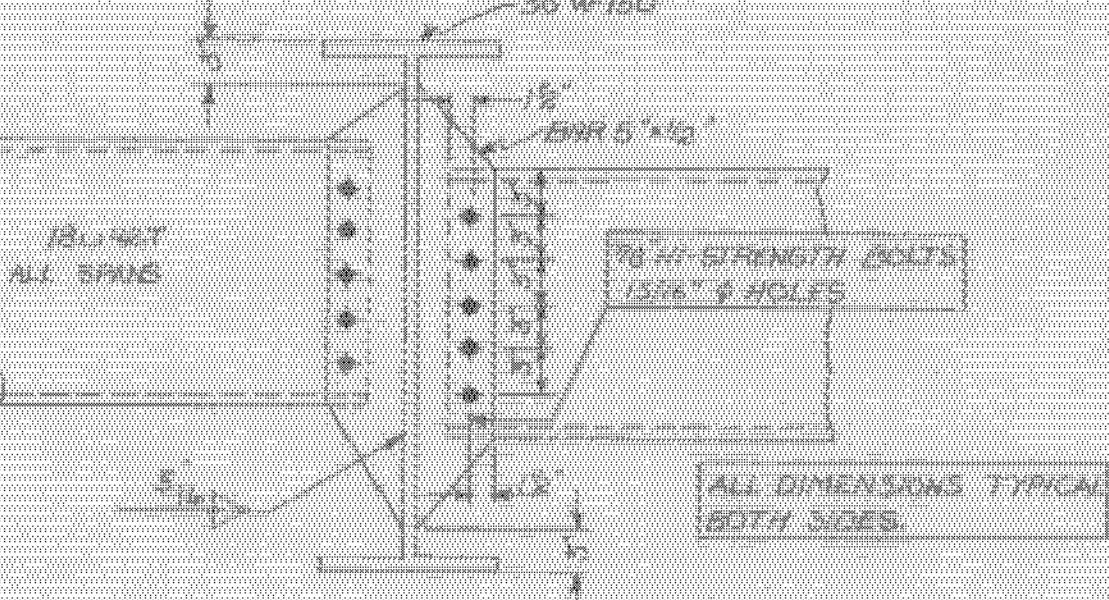
TYPICAL SECTION
SCALE: 1/8" = 1'-0"



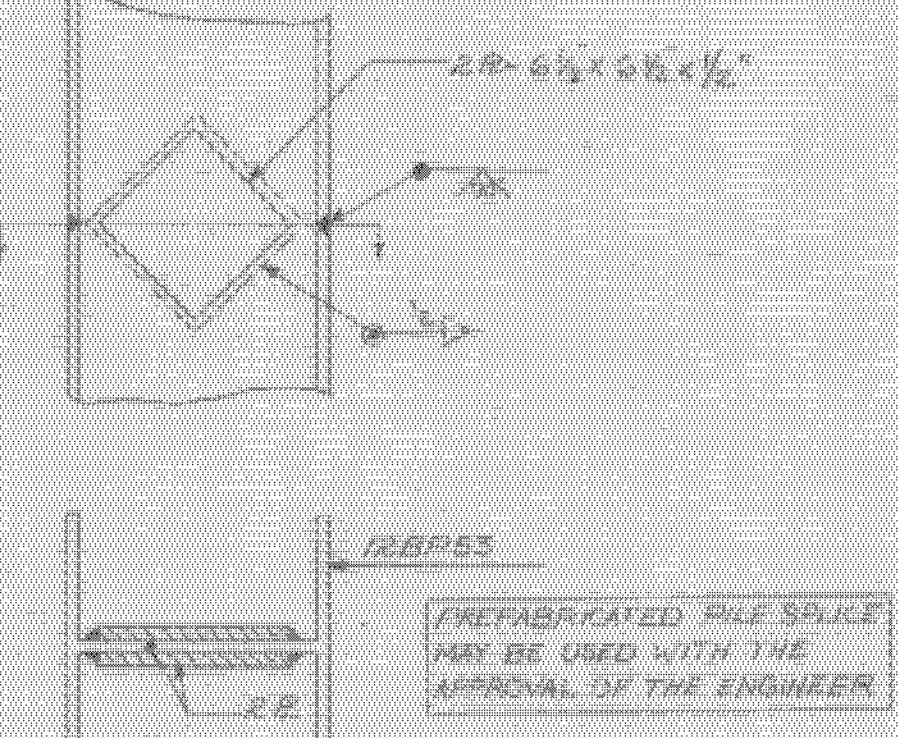
SHEAR CONNECTOR DETAILS
SCALE: 1/2" = 1'-0"



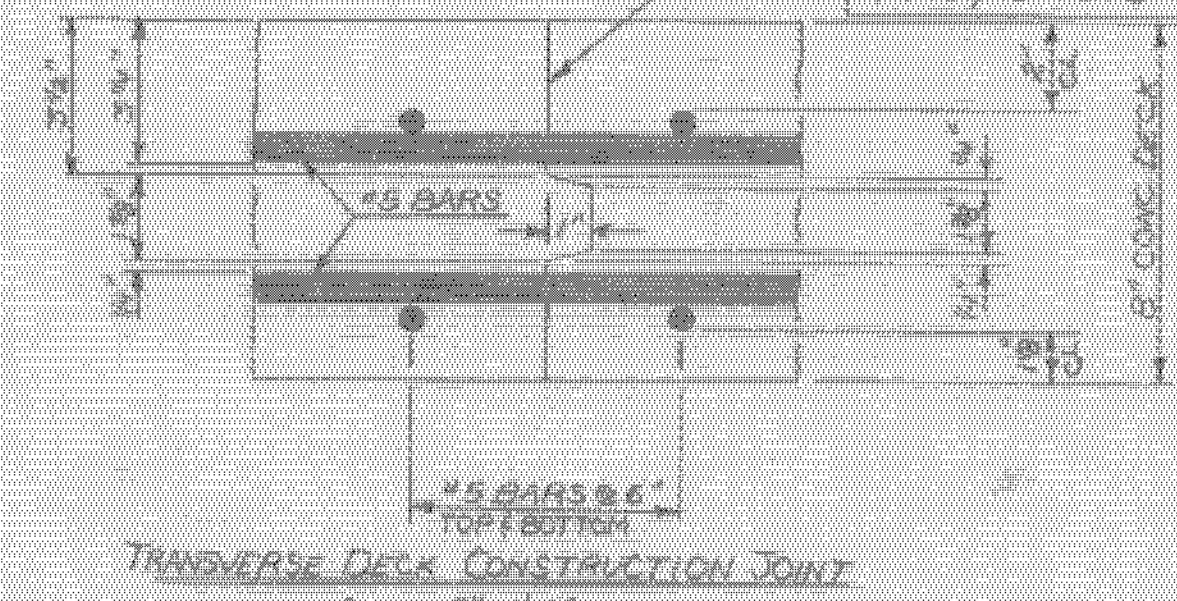
PIER DIAPHRAGMS
SCALE: 1/2" = 1'-0"



INTERMEDIATE DIAPHRAGMS
SCALE: 1/2" = 1'-0"



DETAIL OF PILE SPlice
SCALE: 1/2" = 1'-0"



TRANSVERSE DECK CONSTRUCTION JOINT
SCALE: 3/4" = 1'-0"

STATE OF VERMONT
DEPARTMENT OF HIGHWAYS

PROJECT: BARTON TOWN OF BARTON BR102

ROUTE NO. I 91 STATION 214+97

INTERSTATE 91 OVER VT 16

SUPERSTRUCTURE DETAILS

SCALE AS SHOWN

SECTION SUPERVISOR: F. W. Balkom - 4/70

DRAWN BY: J. G. King CHECKED BY: O. W. Lett

PROJECT NO. I 91-300 (18)

SMALL: 118 OF 118 BR102

BARTON-COVENTRY
IM BPNT (11)
SHEET 15 OF 84
BRIDGES 102N&S
FOR REFERENCE ONLY