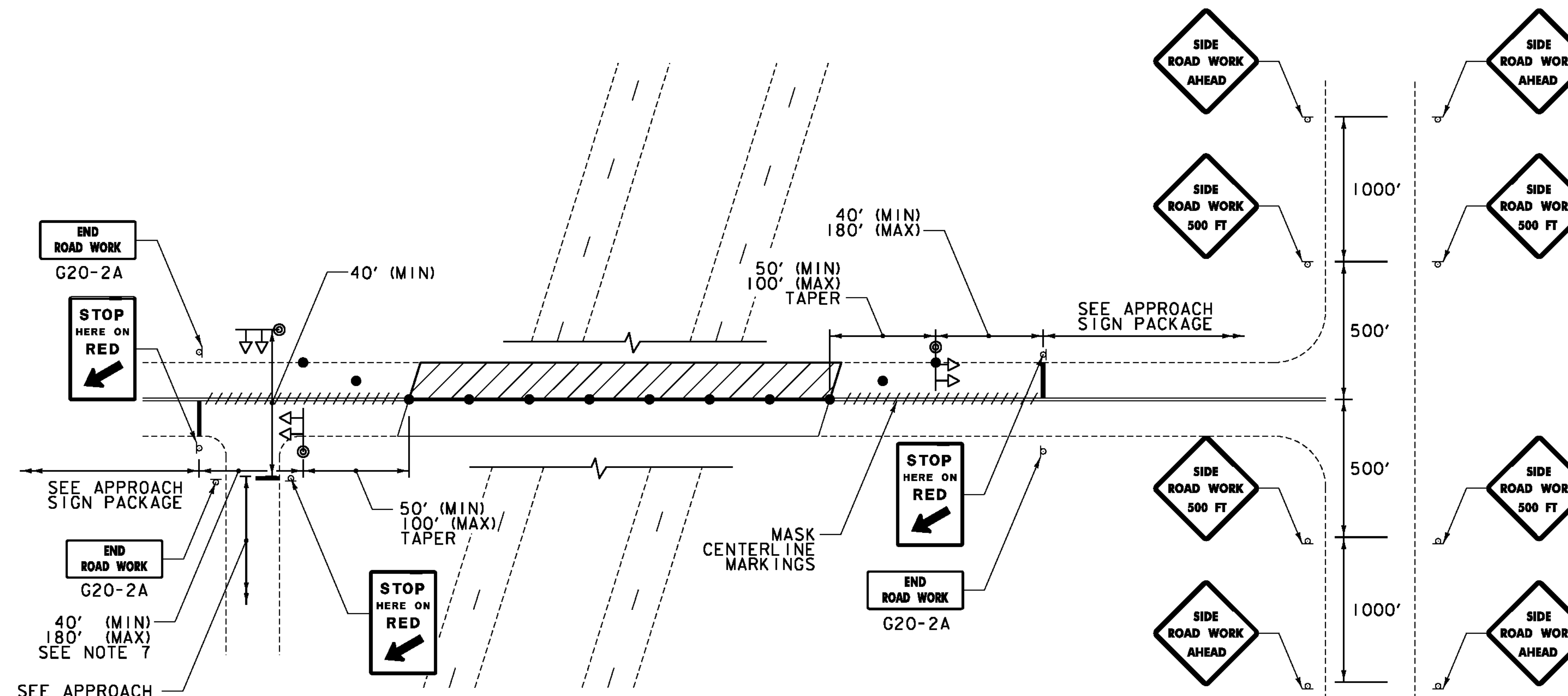


**TRAFFIC CONTROL NOTES:**

- SEE SHEETS 5 AND 6 FOR GENERAL TRAFFIC CONTROL NOTES AND TEMPORARY TRAFFIC SIGNAL NOTES.
- REFER TO STANDARD E-100 FOR CONSTRUCTION APPROACH SIGNS CRITERIA.
- CHANNELIZING DEVICE SPACE:  
TANGENT SECTIONS: 60 FT. (2X DESIGN SPEED LIMIT)  
TAPER SECTIONS: 30 FT. (1X DESIGN SPEED LIMIT)  
DESIGN SPEED THROUGH CONSTRUCTION ZONE = 30 MPH
- ALL SIGNS, PAVEMENT MARKINGS, BARRELS, BARRICADES, AND OTHER INCIDENTALS ASSOCIATED WITH THE TEMPORARY SIGNAL SYSTEM SHALL BE INCIDENTAL TO ITEM 678.40 TEMPORARY TRAFFIC SIGNAL SYSTEM
- ACCESS TO ALL EXISTING SIDE ROADS, DRIVES, AND PARKING AREAS SHALL BE MAINTAINED AT ALL TIMES DURING CONSTRUCTION. DRIVES, SIDE ROADS OR PARKING AREAS SHALL NOT BE LOCATED WITHIN THE ONE-LANE CLOSURE.
- THE PORTABLE CHANGEABLE MESSAGE SIGN (PCMS) SHALL BE USED AT THE DISCRETION OF THE ENGINEER. THE PCMS SHALL BE USED IN ACCORDANCE WITH SECTION 6F.60 OF THE MUTCD.
- SIGNAL HEADS SHALL BE VISIBLE FROM THE STOP BAR IN ACCORDANCE WITH MUTCD SECTION 4D.14.
- ANY PARKING AREAS OR DRIVES WITH AN ENTRANCE/EXIT BETWEEN THE TRAFFIC SIGNAL AND THE WORK ZONE SHALL HAVE THAT ENTRANCE/EXIT CLOSED WITH CONES OR DRUMS, PROVIDED ADDITIONAL ENTRANCES/EXITS EXIST IN THE AREA APPROACHING THE TRAFFIC SIGNAL.
- ANY PUBLIC HIGHWAYS BETWEEN THE TRAFFIC SIGNAL AND THE WORK ZONE WILL REQUIRE AN ADDITIONAL FLAGGER TO MAINTAIN TRAFFIC CONTROL FOR THE PUBLIC HIGHWAY.

**LEGEND**

●	RETROREFLECTIVE PLASTIC DRUM
⊕	TEMPORARY TRAFFIC SIGNAL
⊘	TEMPORARY CONSTRUCTION SIGN
⚡	FLASHING BEACON
▨	WORK ZONE
///	MASKED PAVEMENT MARKING
▬▬▬▬	TEMPORARY TRAFFIC BARRIER



PROJECT NAME: BARTON COVENTRY  
 PROJECT NUMBER: IM BPNT(II)  
 FILE NAME: ...drawing\Plot Files\tcp 3.dgn PLOT DATE: 12/3/2012  
 PROJECT LEADER: G. BOGUE DRAWN BY: C. GENDRON  
 DESIGNED BY: D. DEBAIE CHECKED BY: G. BOGUE  
**TRAFFIC CONTROL PLAN 3** SHEET 9 OF 84

