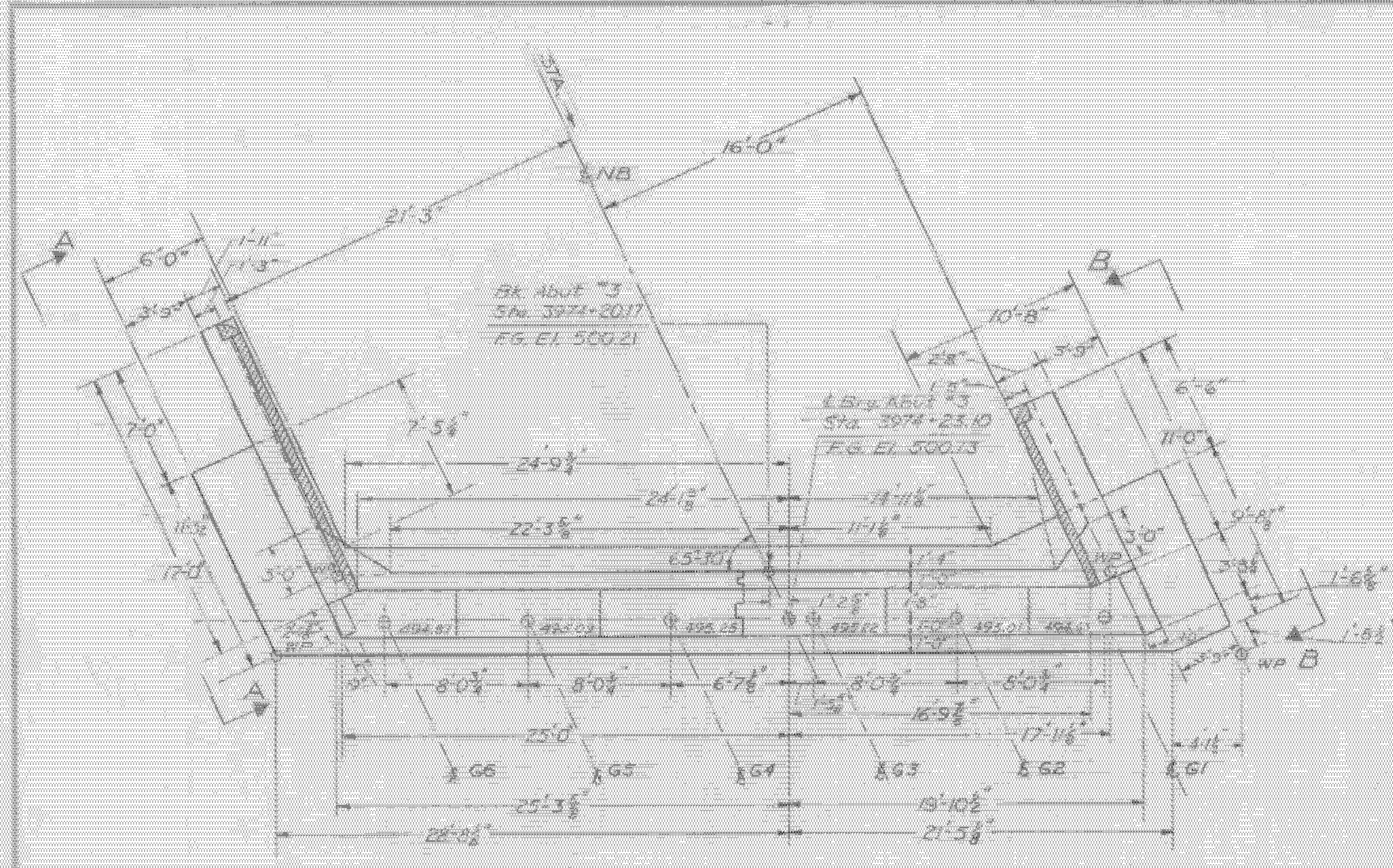
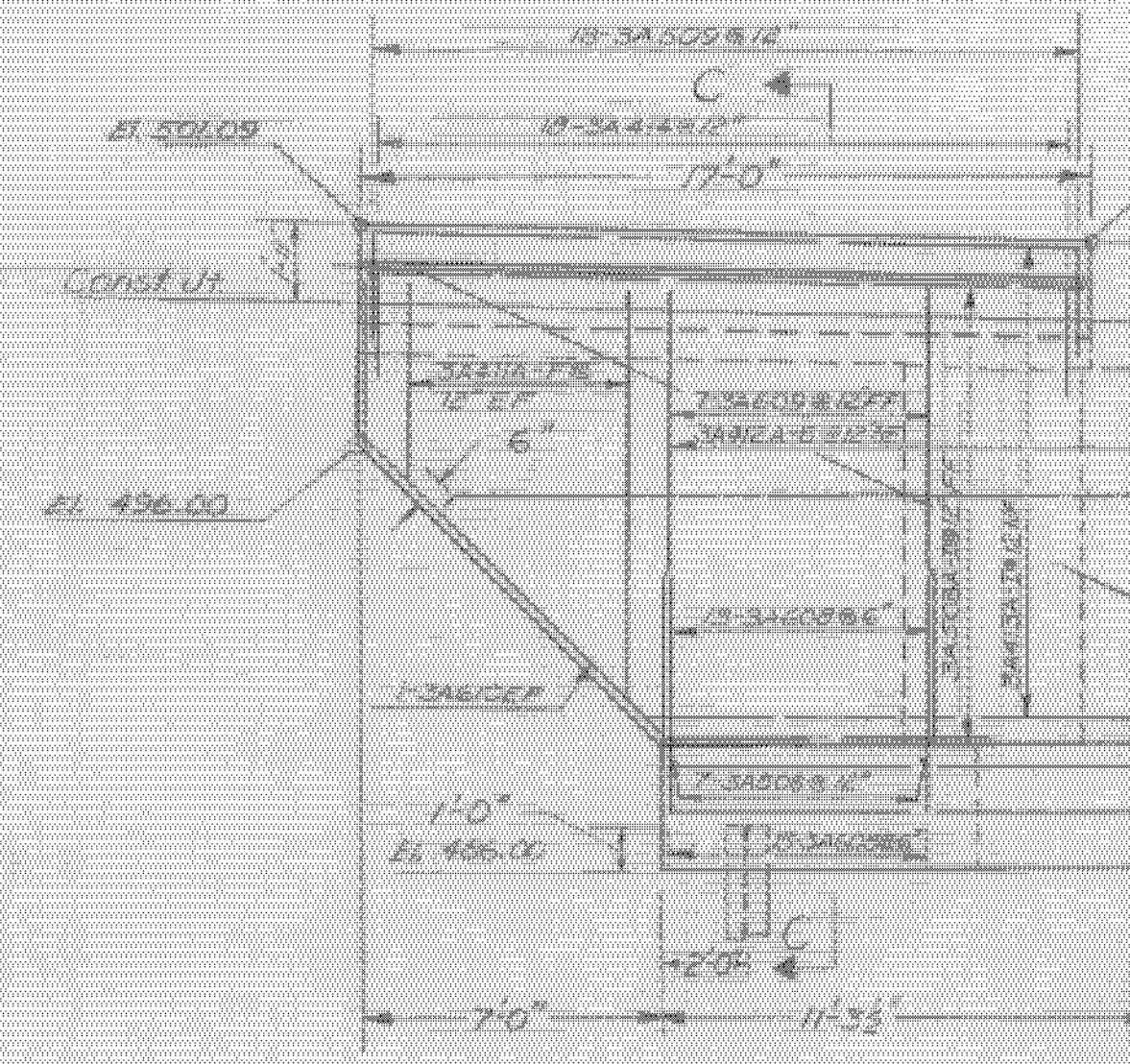


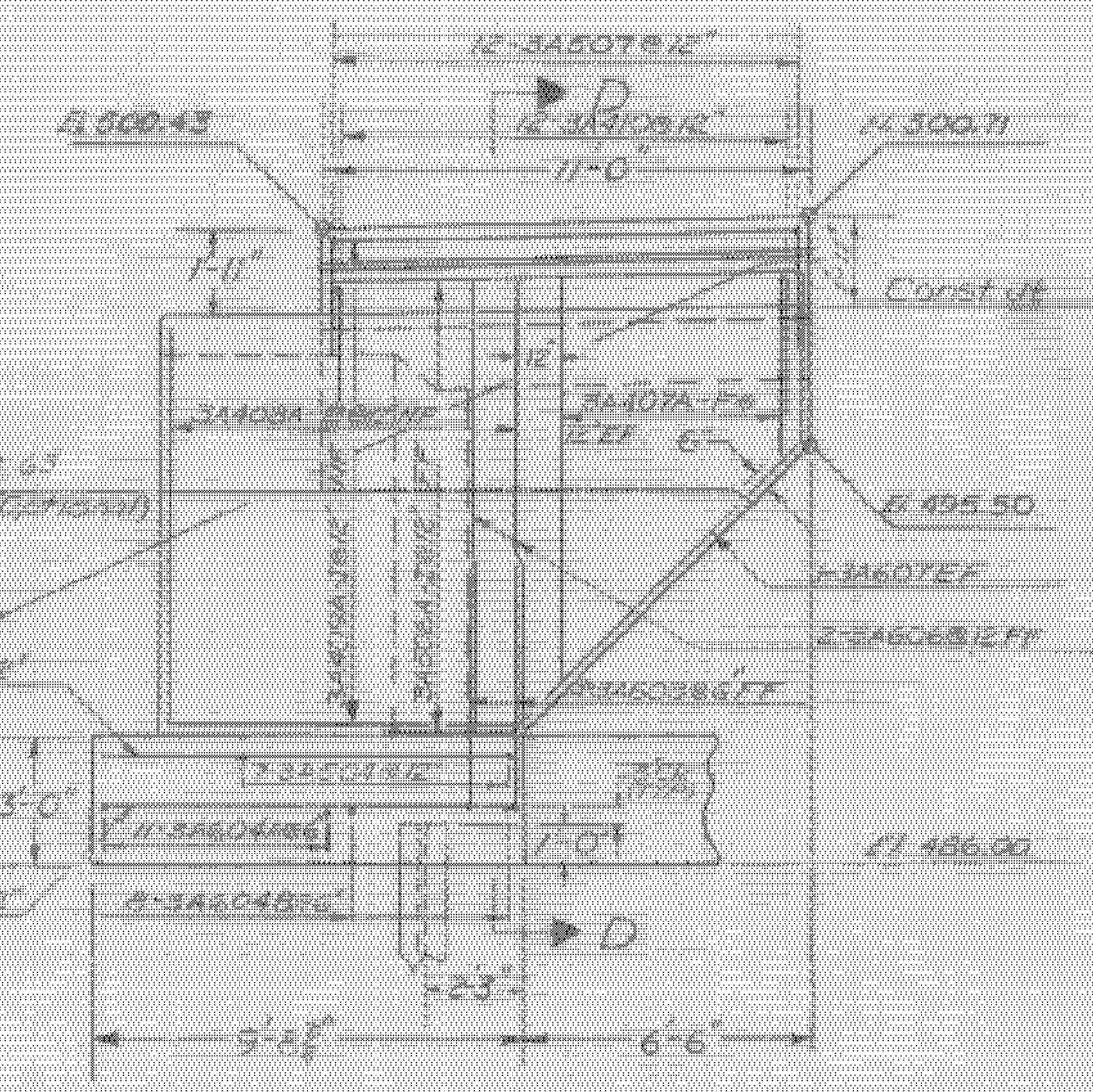
For notes concerning Abutments see Br. 215.



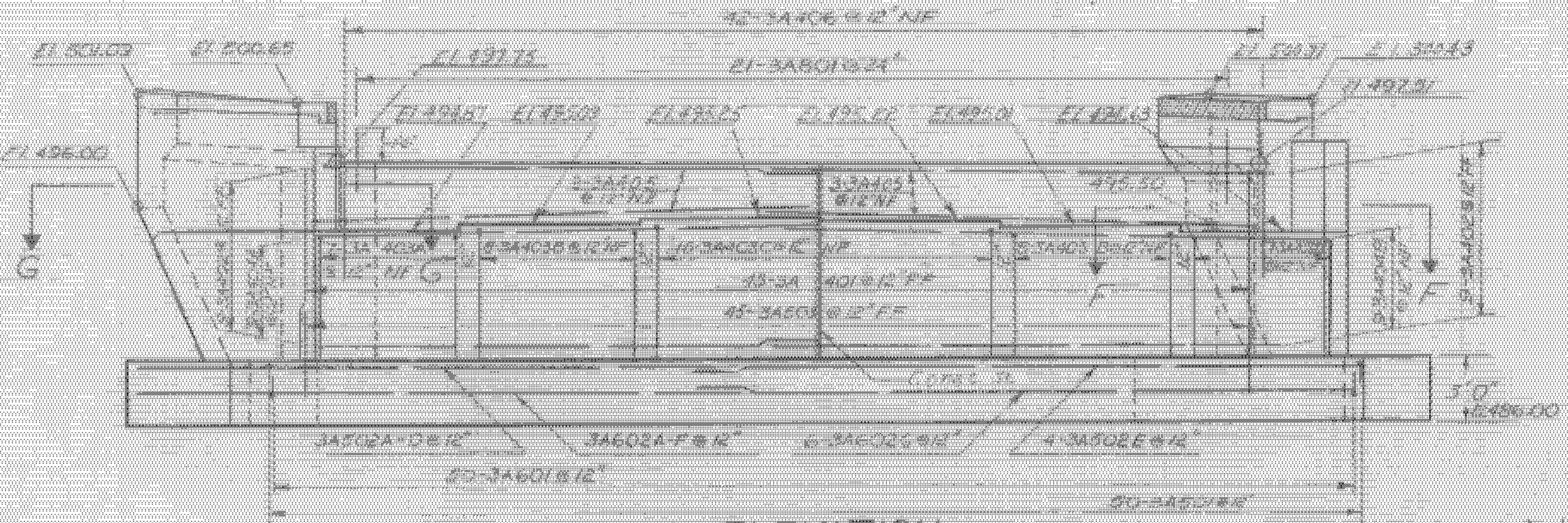
PLAN
SCALE 1/8" = 1'-0"



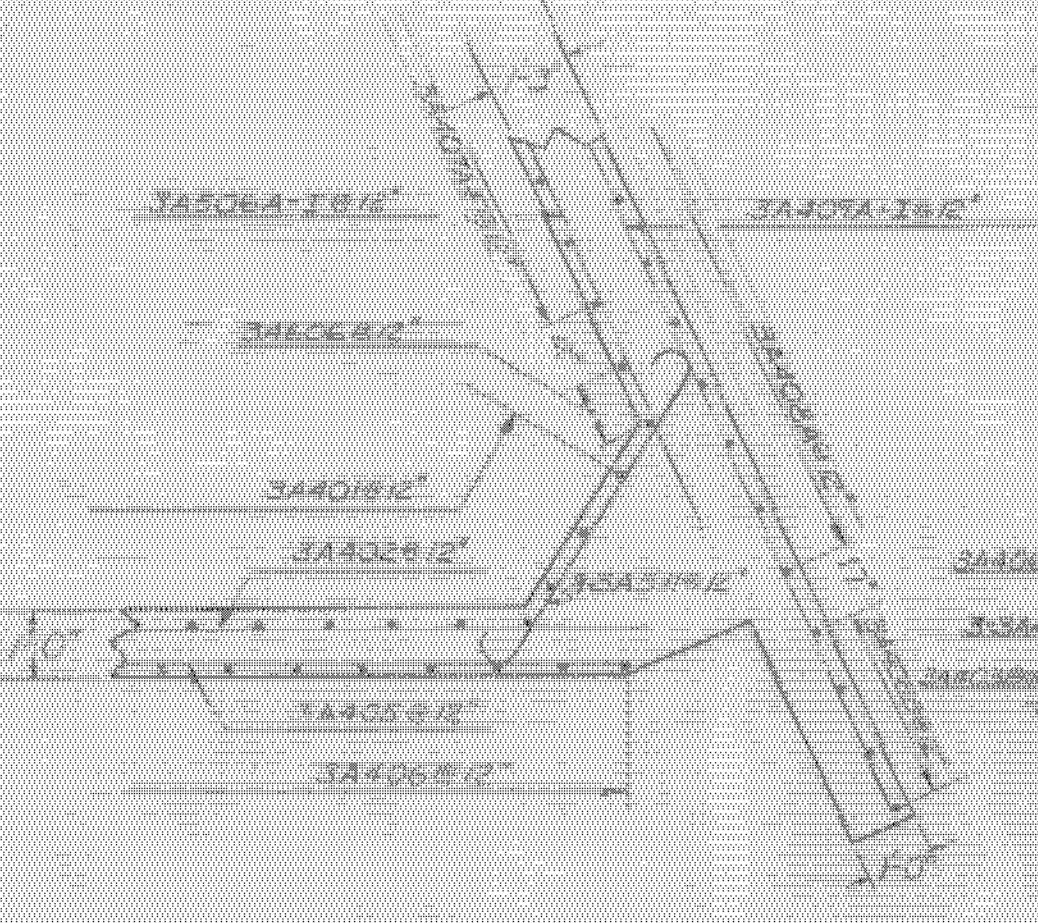
SECTION A-A
SCALE 1/4" = 1'-0"



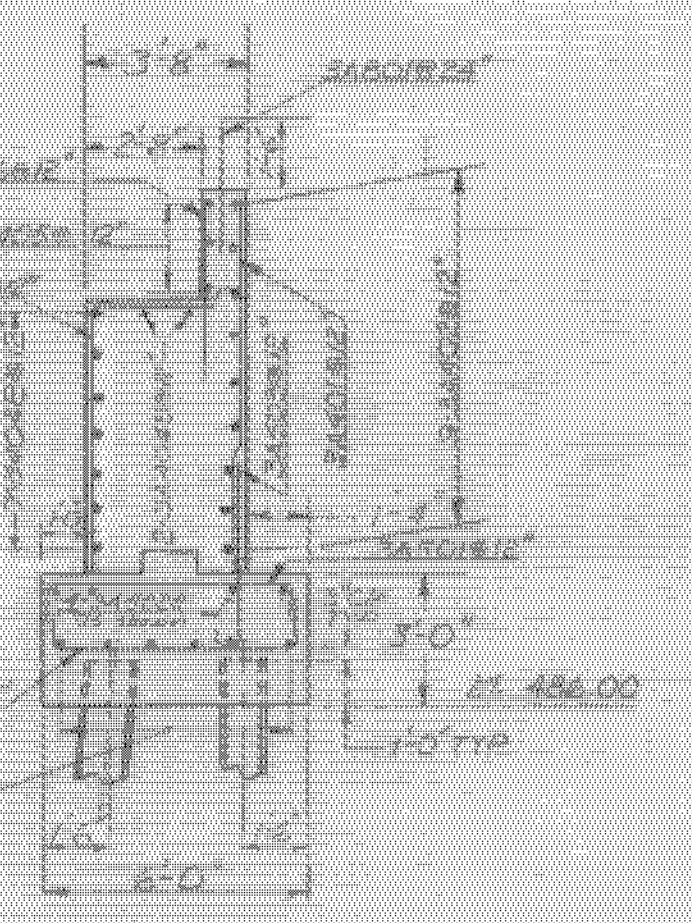
SECTION B-B
SCALE 1/4" = 1'-0"



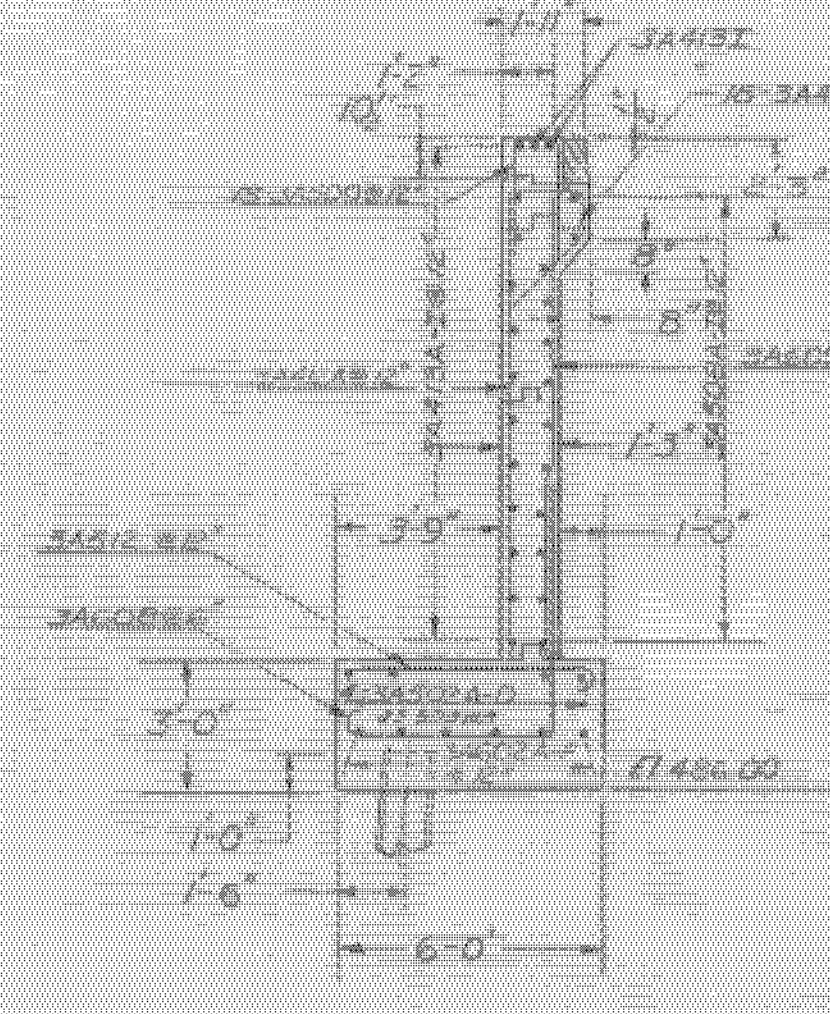
ELEVATION
SCALE 1/8" = 1'-0"



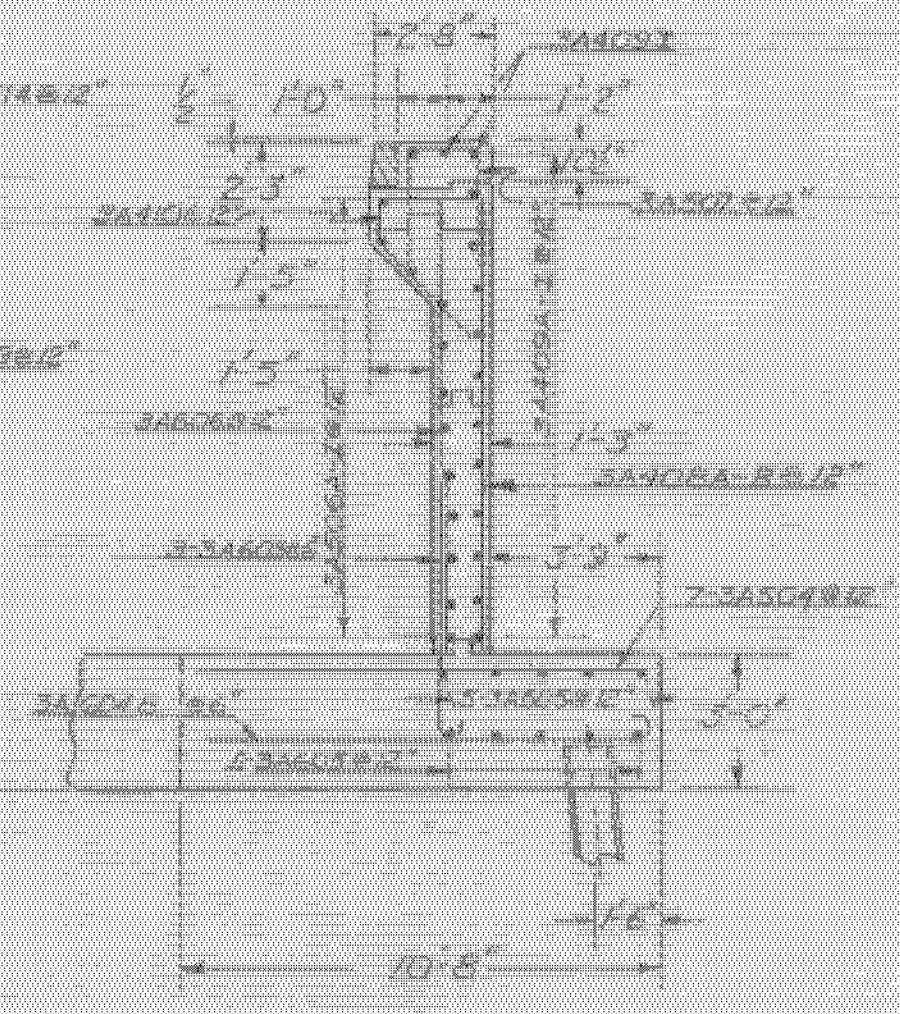
SECTION F-F
SCALE 1/8" = 1'-0"



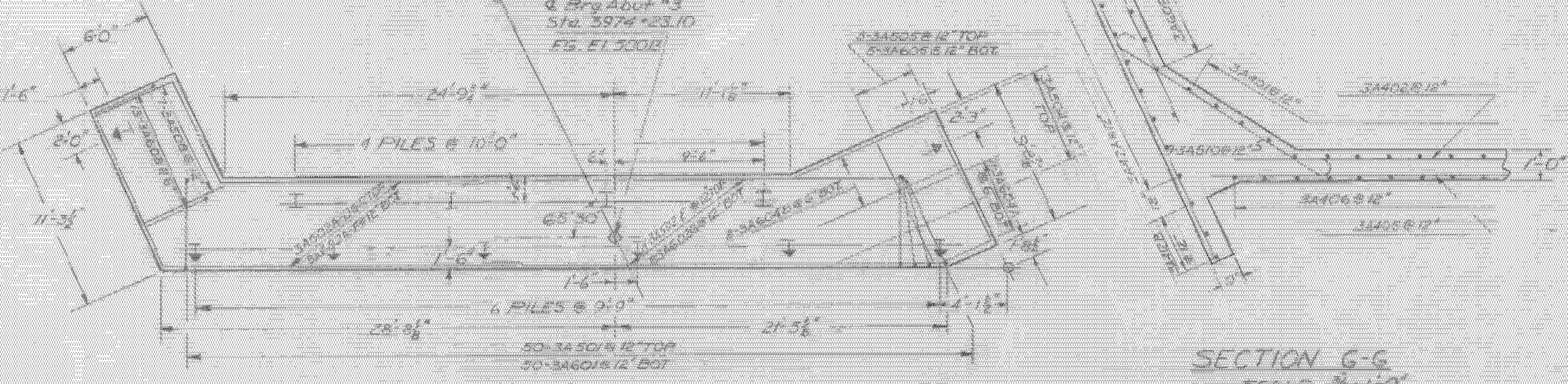
SECTION E-E
SCALE 1/4" = 1'-0"



SECTION C-C
SCALE 1/4" = 1'-0"



SECTION D-D
SCALE 1/4" = 1'-0"



FOOTING & PILE PLAN
SCALE 1/8" = 1'-0"

SECTION G-G
SCALE 1/4" = 1'-0"

NOTE: Estimated Length of 12BF53 Steel H Piles 18.70 FT

ITEM NO.	ITEM	UNIT	NET	TOTAL	PRICE
1	CONC. GRAV. OF BRIDGE	C.Y.			
2	CONC. CURB OF BRIDGE	C.Y.			
3	INCLINE CONC. EXCAV	C.Y.			
4	BRICK LACER	C.Y.			
5	CONC. CURB (A-100)	C.Y.			
6	CONC. CURB (B-100)	C.Y.			
7	REIN. STEEL	TONS			
8	STEEL PLATE	C.Y.			
9	STEEL PLATE	C.Y.			
10	STEEL PLATE	C.Y.			
11	STEEL PLATE	C.Y.			
12	GRAVELLED FILLING	C.Y.			

STATE OF
DEPARTMENT

PROJECT
TOWN OF
ROUTE No. 191
I-91 OVER Vt. 10-A
DETAILS ABUT. NO. 3
SCALE AS NOTED
IN CHARGE R. Gentry

WESTMINSTER - NORWICH
IM MEMB(30)
SHEET 37 OF 38
FOR REFERENCE ONLY

PROJECT No. I-91-2(6)
SHEET 37 OF 38
BR 212