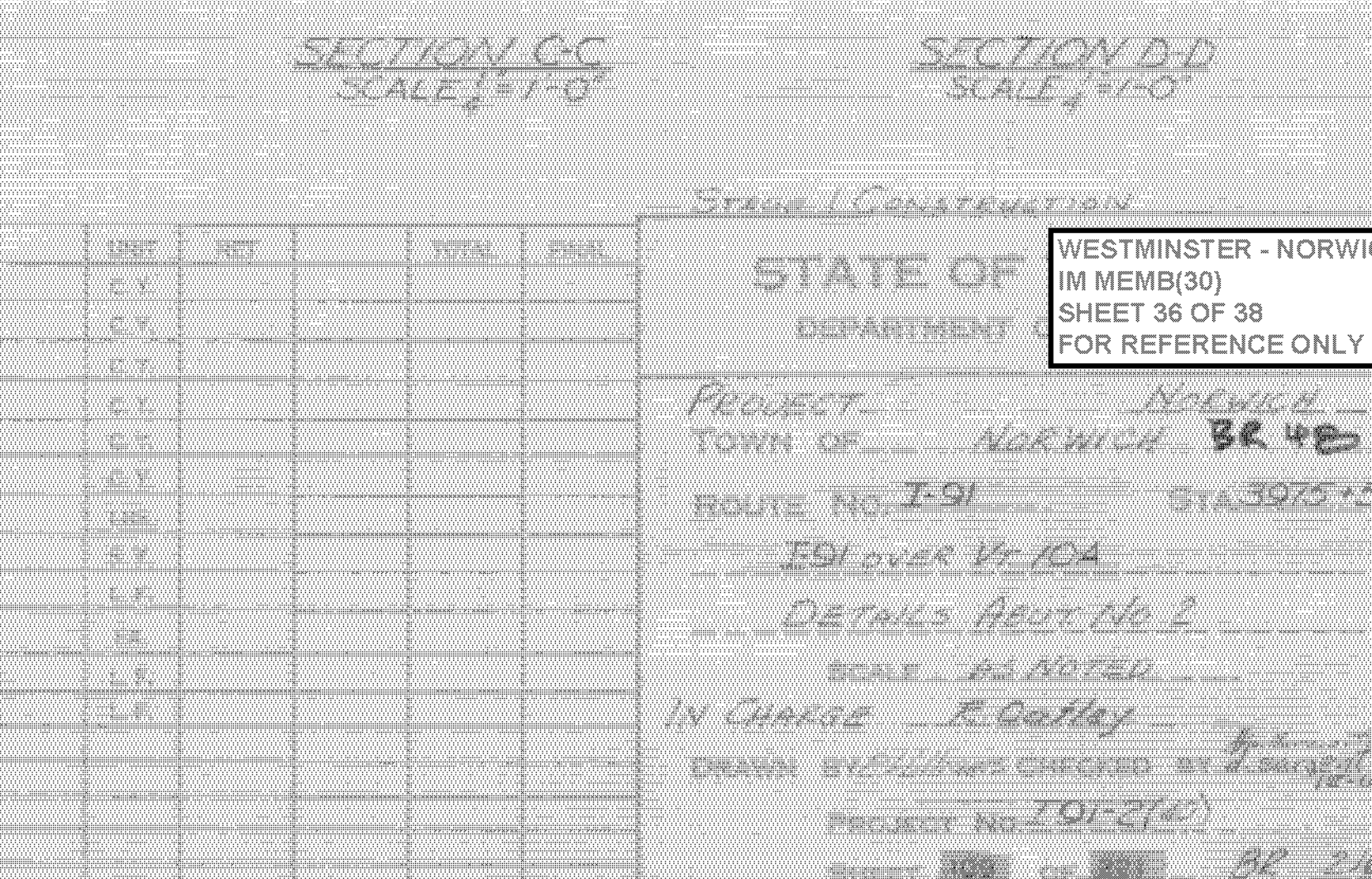
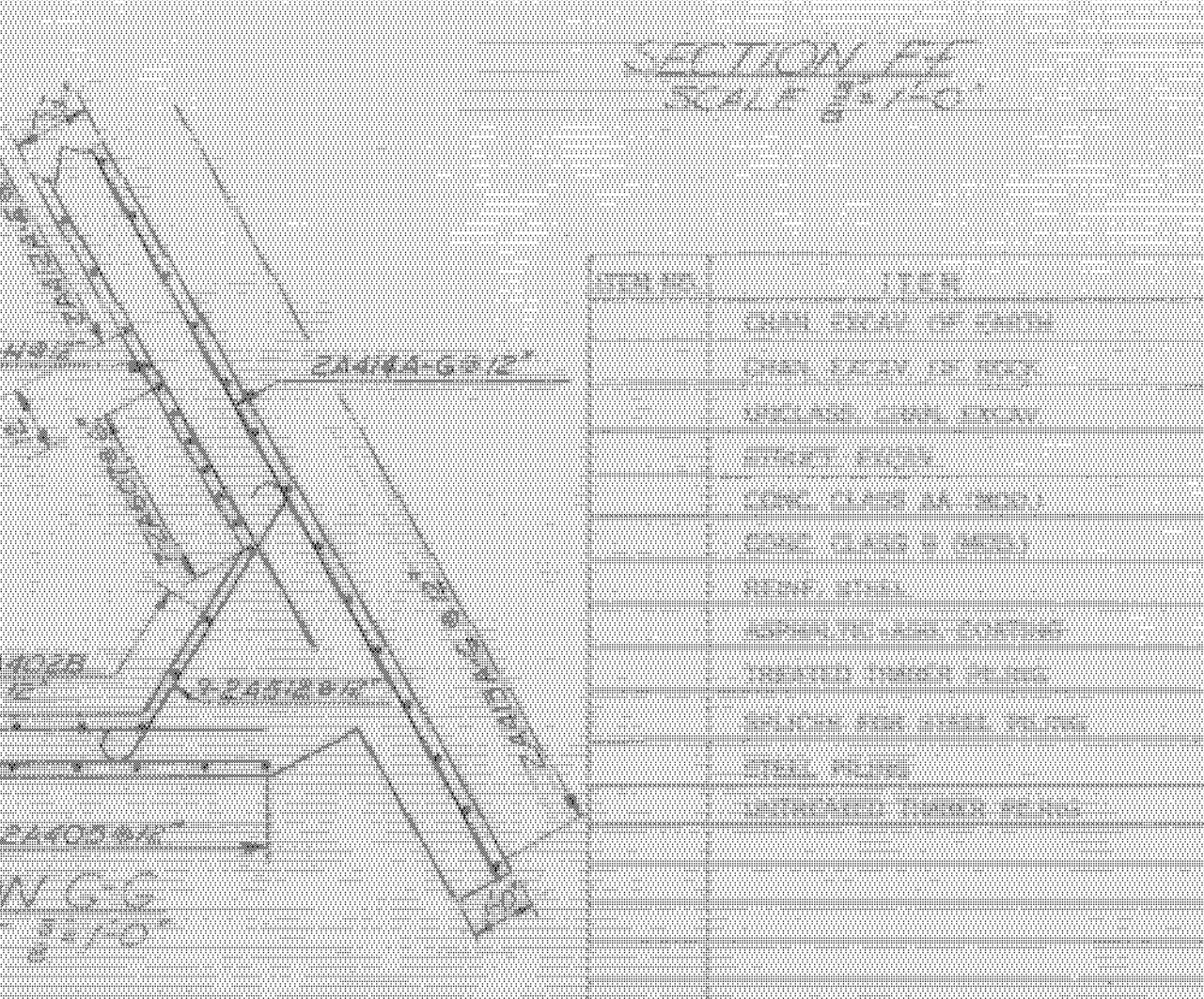
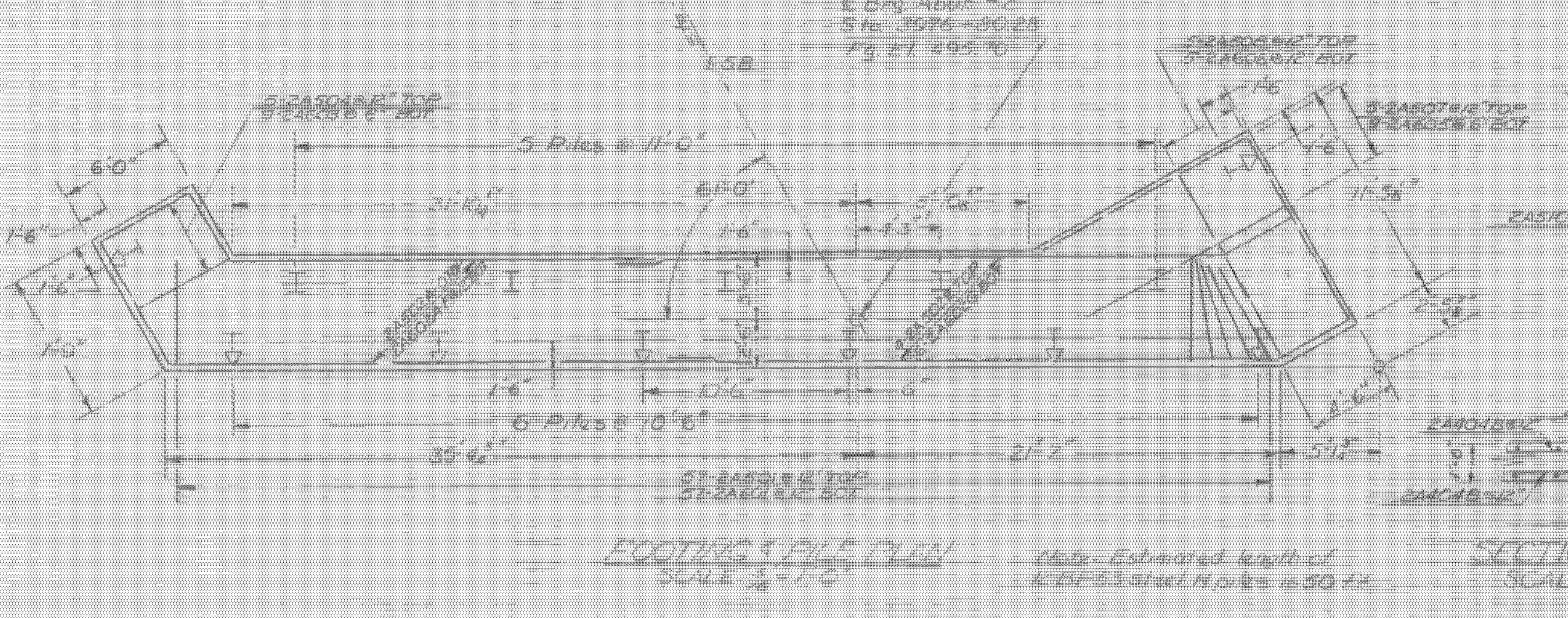
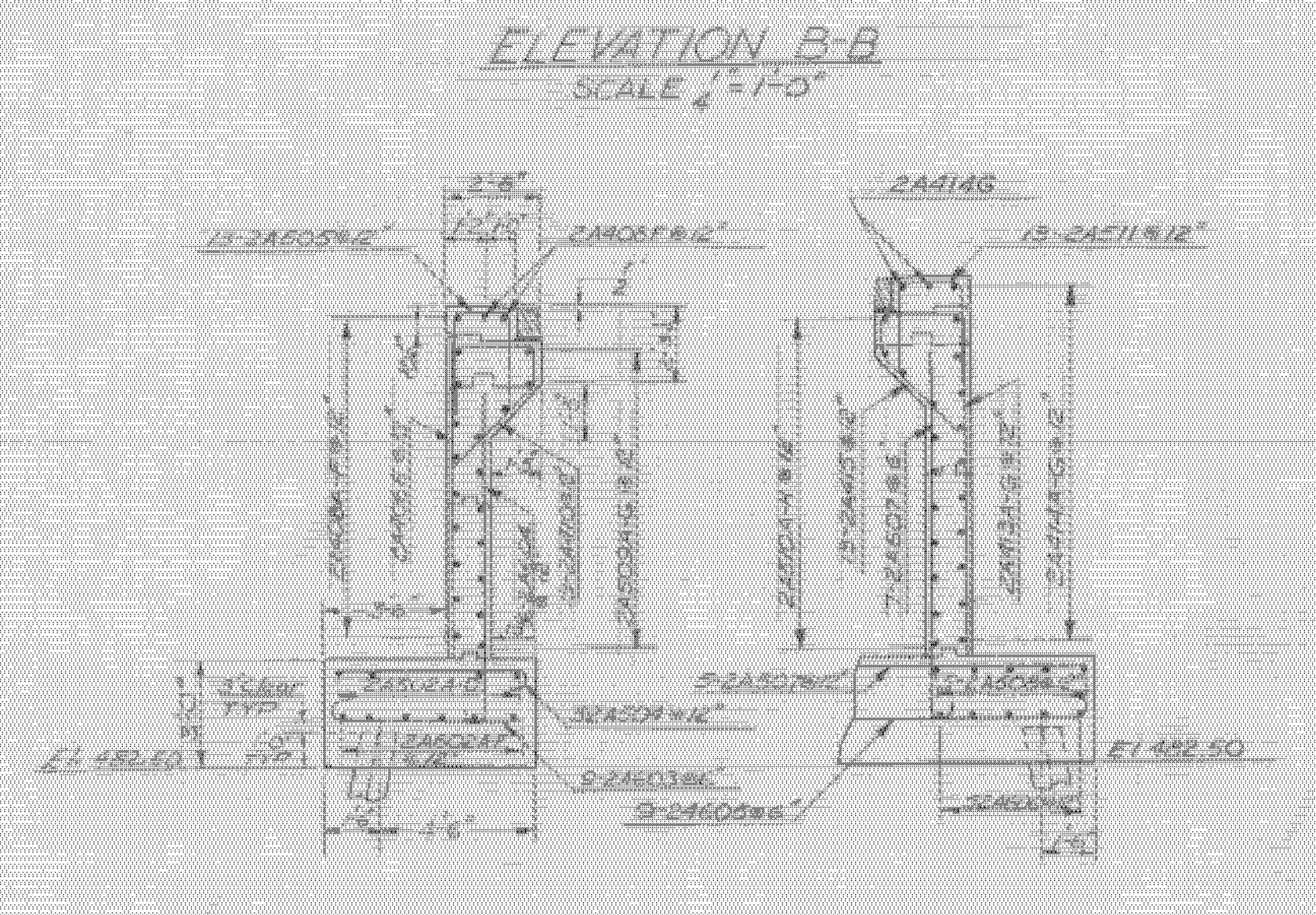
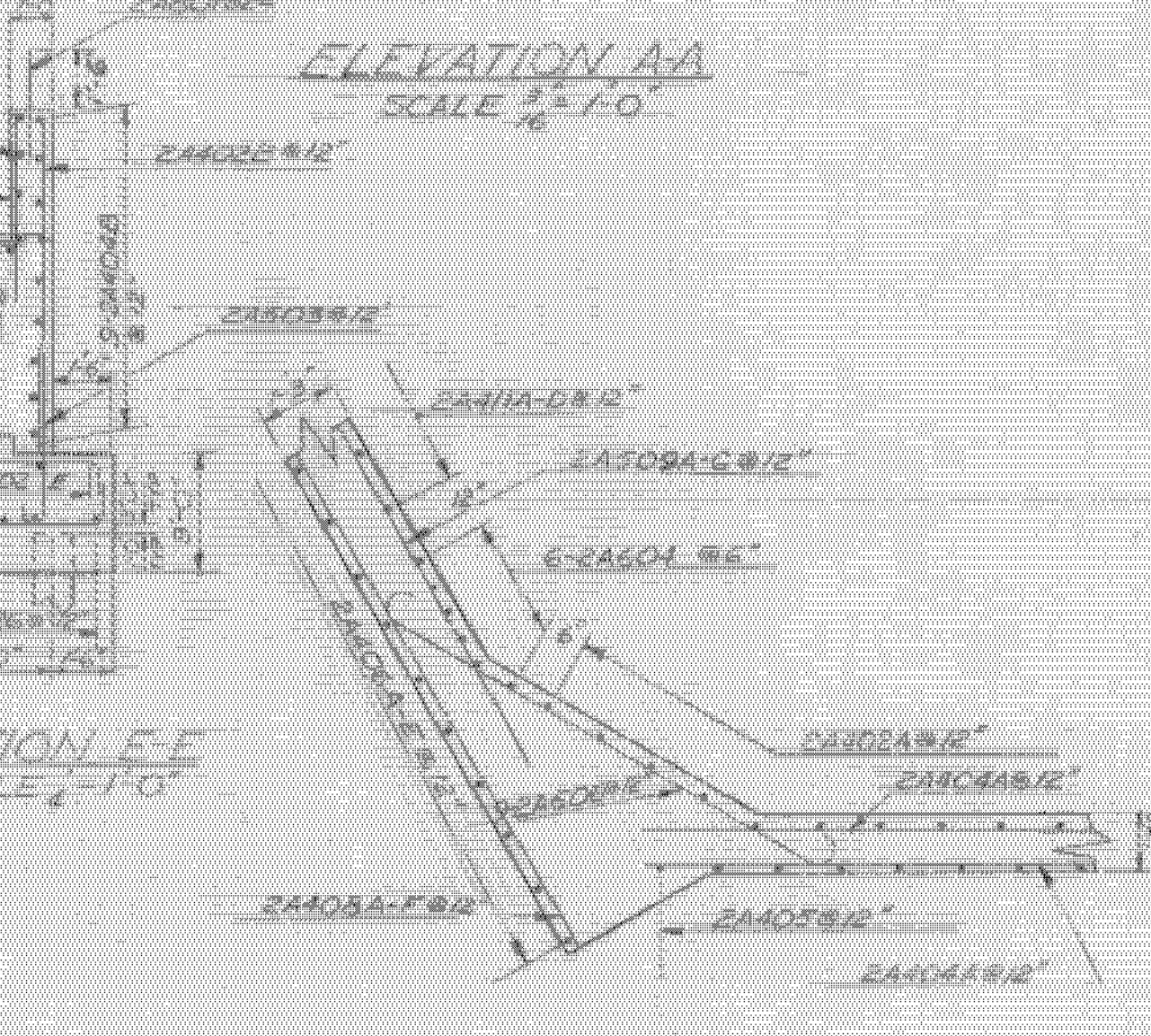
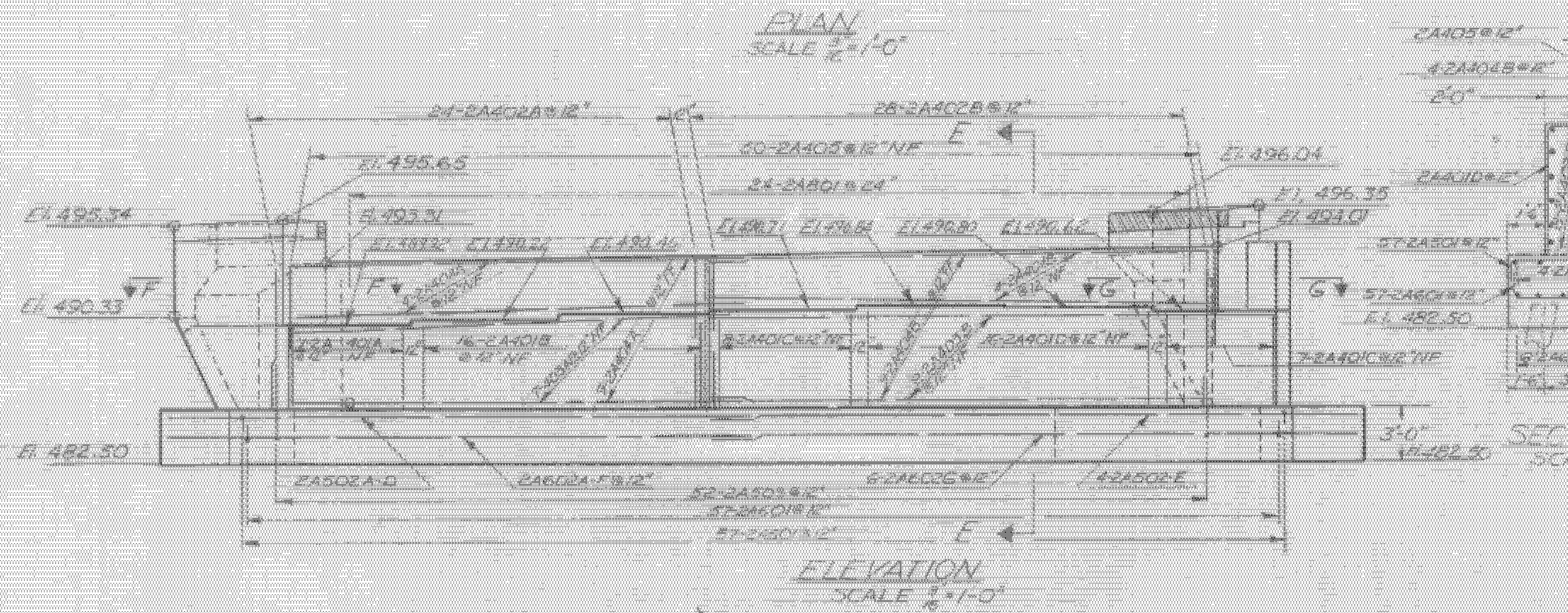
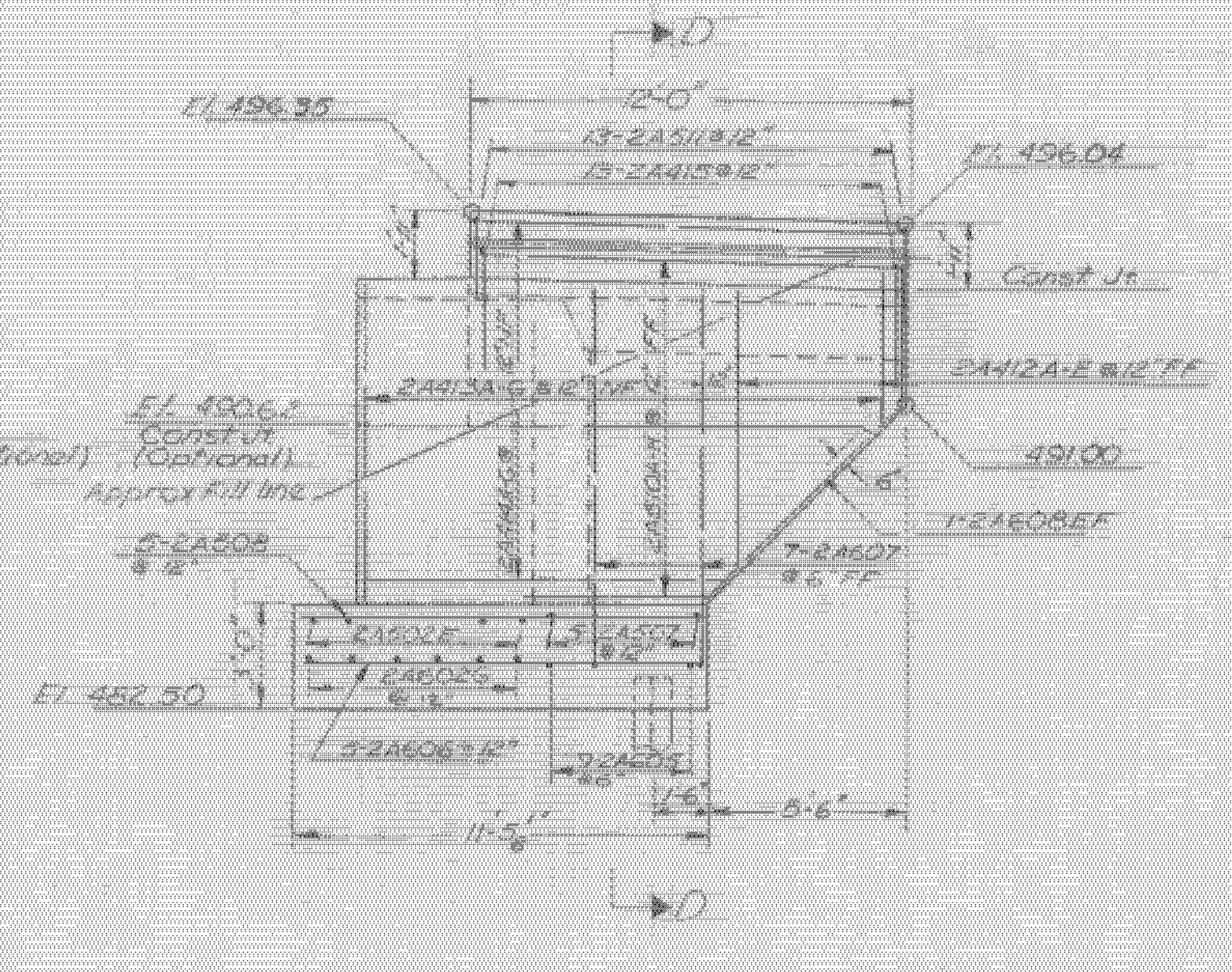
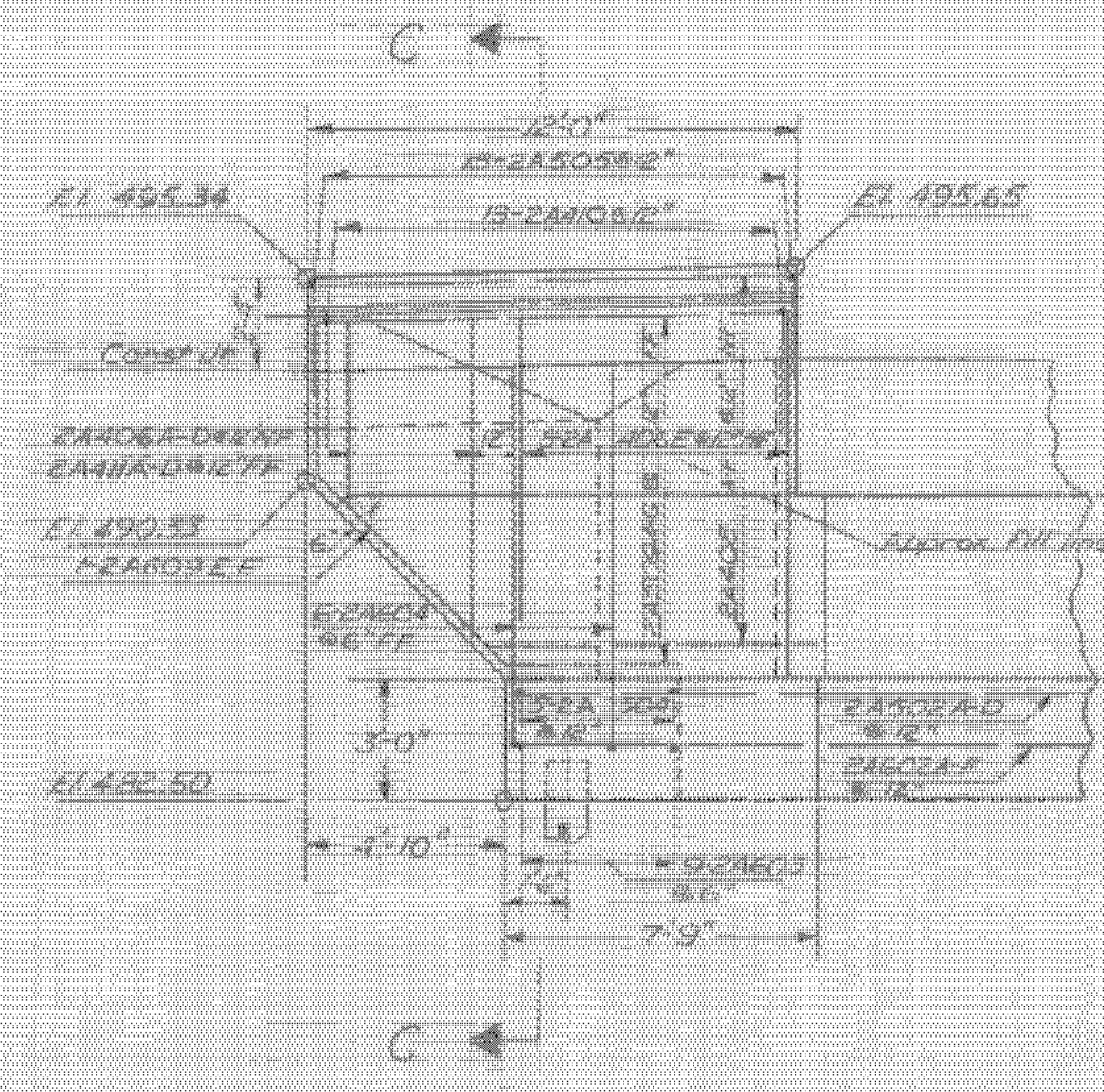
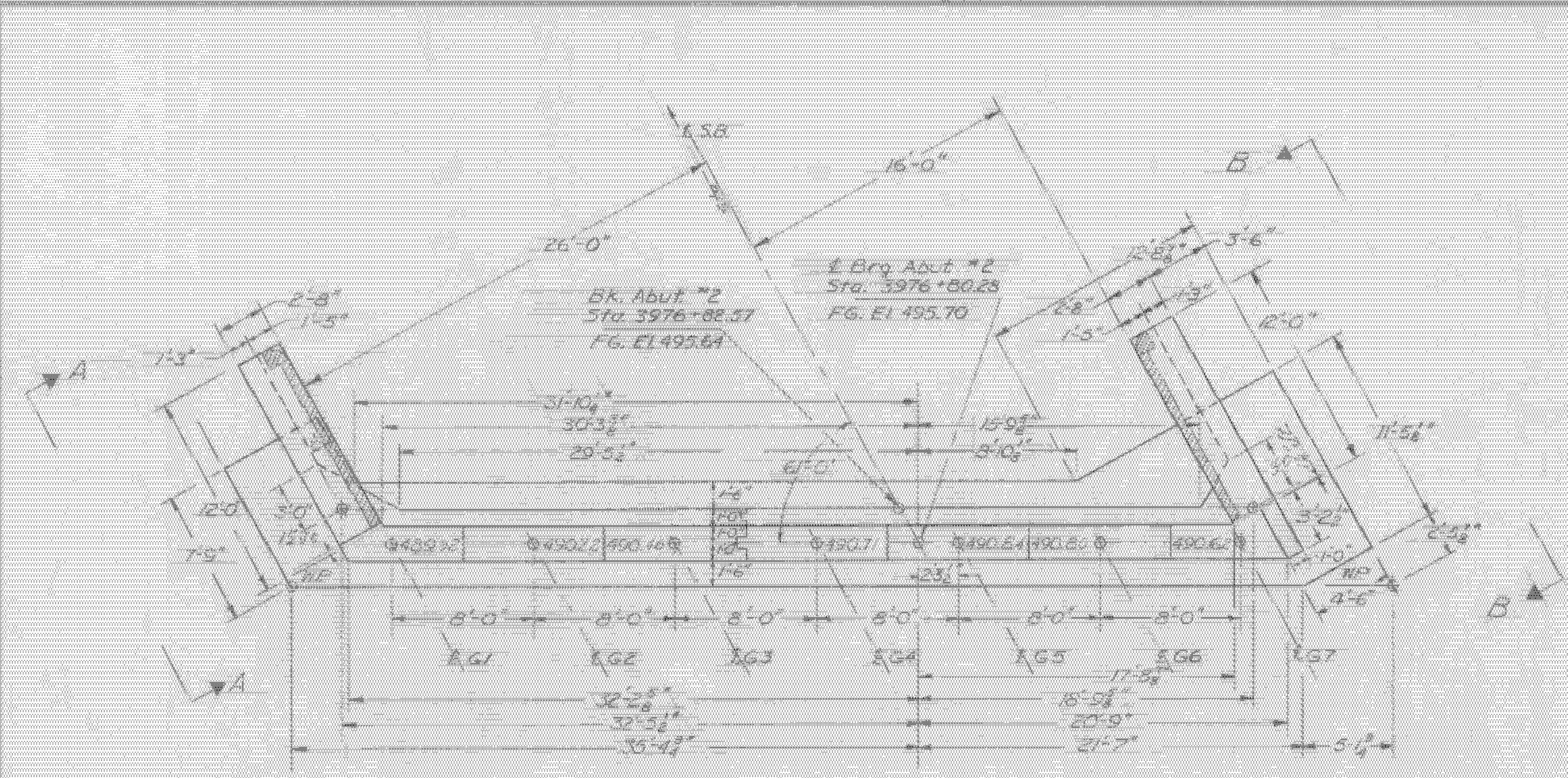


For notes concerning Abutments see Bx 215



ITEM NO.	ITEM	UNIT	REQ.	TOTAL	PRIN.
1	THIN LAYER OF SAND	C.Y.			
2	THIN LAYER OF ROCK	C.Y.			
3	UNCLASS. CRUSH. EXCAV.	C.Y.			
4	STRUCT. EXCAV.	C.Y.			
5	CONC. CLASS AA (3000)	C.Y.			
6	CONC. CLASS B (4000)	C.Y.			
7	REIN. STEEL	TONS			
8	ASPHALT SURF. DOTTING	S.Y.			
9	TREATED TIMBER PILING	L.F.			
10	BOLTS FOR STEEL PILING	LB.			
11	STEEL PILING	L.F.			
12	UNTREATED TIMBER PILING	L.F.			

STATE OF WESTMINSTER - NORWICH
 DEPARTMENT OF HIGHWAYS
 PROJECT: NORWICH
 TOWN OF NORWICH BR 42
 ROUTE NO. I-91 STA 3975+50
 I-91 OVER VT 10A
 DETAILS ABUT. NO. 2
 SCALE: AS NOTED
 IN CHARGE: R. Gately
 DRAWN BY: [Signature] CHECKED BY: [Signature]
 PROJECT NO. 701-210
 SHEET NO. 85 OF 82 BR 216