

General Notes

- Elevation datum is sea level based on nearest U.S. Government vertical control.
- For additional General Notes see Standard SCB-DI-65
- For Railing details see Standards SB-R1-64, Sh. 1 of 2, and SB-R2-65. Space railing not to exceed maximum spacing shown on Standards, with 2 feet 6" minimum from curb joints at Piers and Abutments.
- Where Bottom of Footing Elevations are above old ground, fill is to be placed at least 6" above Bottom of Footing before Piles are driven. Excavation of this material to Bottom of Footing Elevation after Piles are driven shall be paid for as Structure Excavation, Item 103.
- Approach Slabs shall be constructed as part of Stage I construction.
- Shop drawings for Item 556-C, Granite Bridge Curb, shall be submitted in triplicate to the State of Vermont, Department of Highways for approval before fabrication.

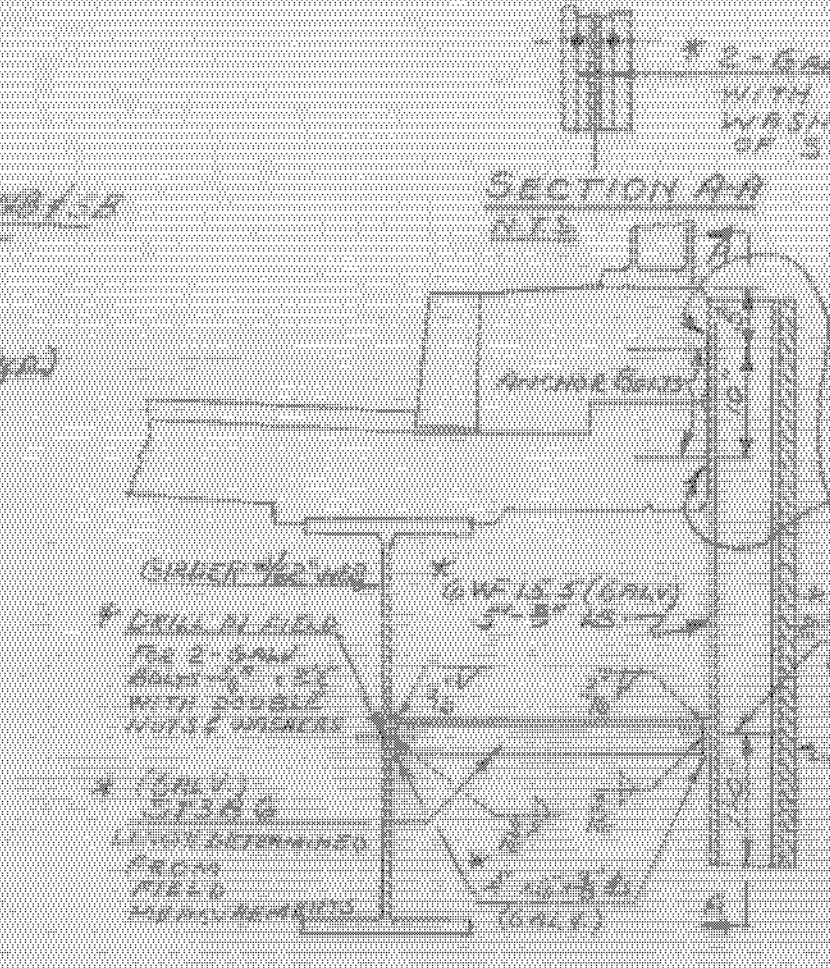
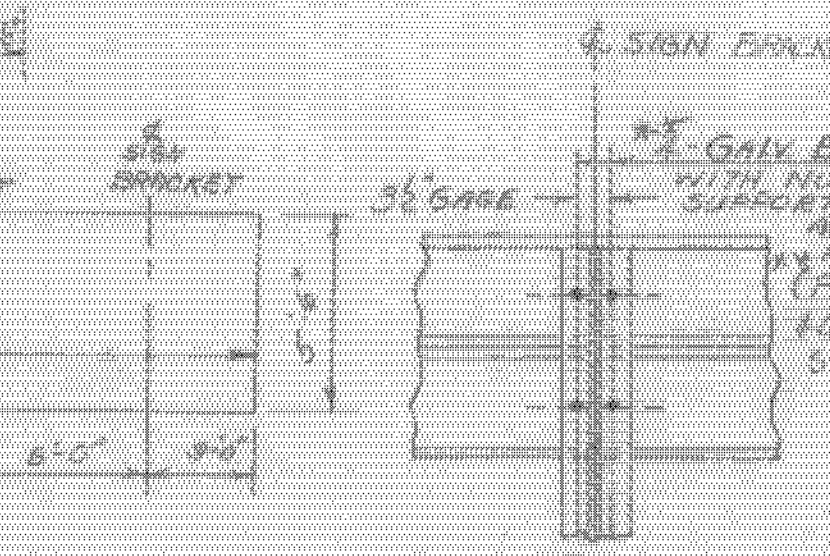
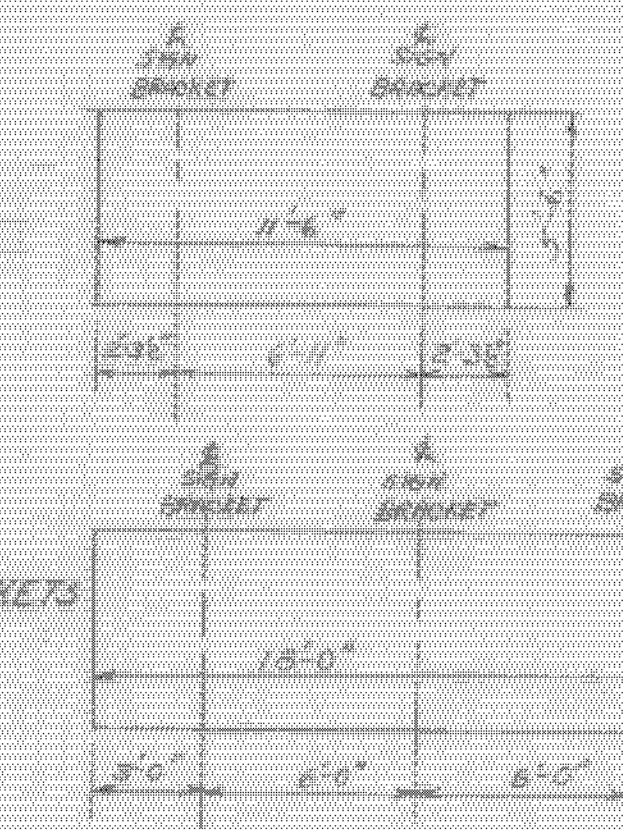
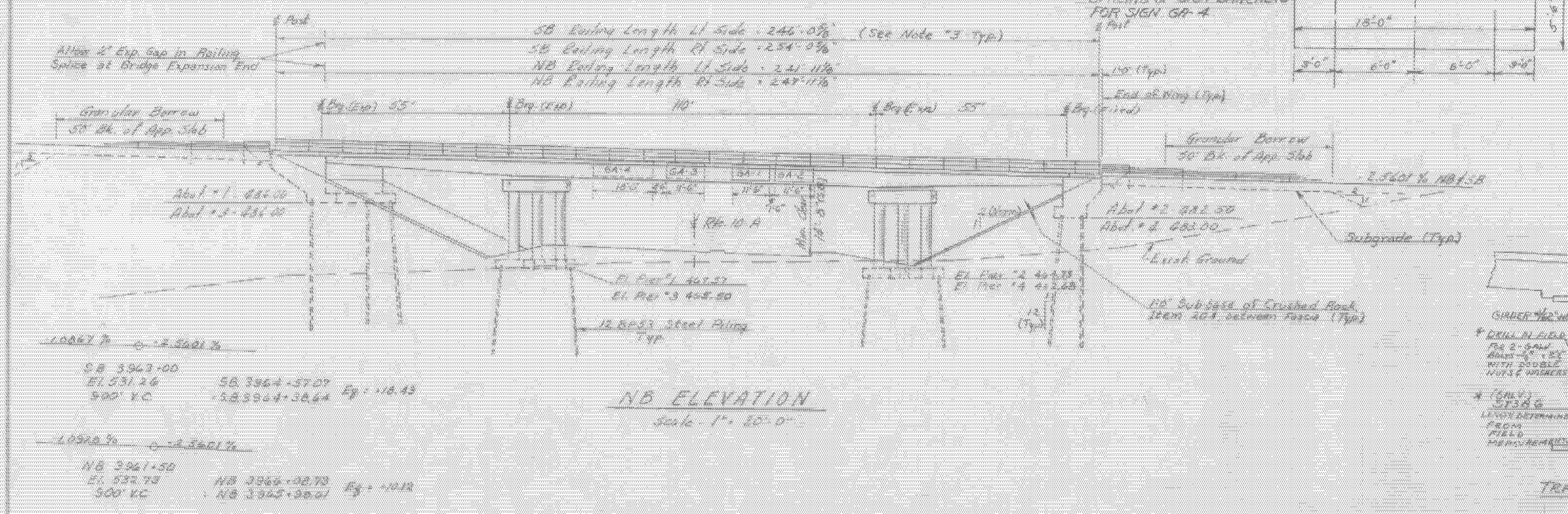
List of Bridge Sheets

By 200	Plan and Elevation, General Notes
201	Quantity Sheet
202	Preliminary Information Sheet
203, 204	Borings
205	Framing Plans
206	S.B. Section and Girder Details
207	N.B. Section and Girder Details
208	Bearing Devices
209, 210	Expansion Dam Details
211-214	Approach Slabs
215-218	Abutments
219, 220	Piers
By 221-223	Reinforcing Steel Schedules

Standard Sheets

SCB-DI-65	2-14-66 R
SCB-D4-65, Curb Details	2-4-65 R
SCB-D6-65, Details A&B	3-1-66 R
SB-R1-64, Sh. 1 of 2	12-5-66 R
SB-R1-64, Sh. 2 of 2	11-8-66 R
SB-R2-65	11-8-66 R

*Note: Traffic sign support material with the exception of bolts cast in bridge fascia is to be furnished and paid for under Item 701 Traffic Signs.



TRAFFIC SIGN SUPPORT DETAIL

STATE OF VERMONT
DEPARTMENT OF HIGHWAYS

WESTMINSTER - NORWICH
IM MEMB(30)
SHEET 27 OF 38
FOR REFERENCE ONLY

PROJECT - NORWICH
TOWN OF - NORWICH
ROUTE No. 191 STA 3978-50'
12 OVER VI. 10-A
PLAN & ELEVATION, GENERAL NOTES
SCALE AS NOTED
IN CHARGE P. Coffey
DRAWN BY J. D. ... CHECKED BY ...
PROJECT NO. 191-2(62)
SHEET 27 OF 38 - BR 200