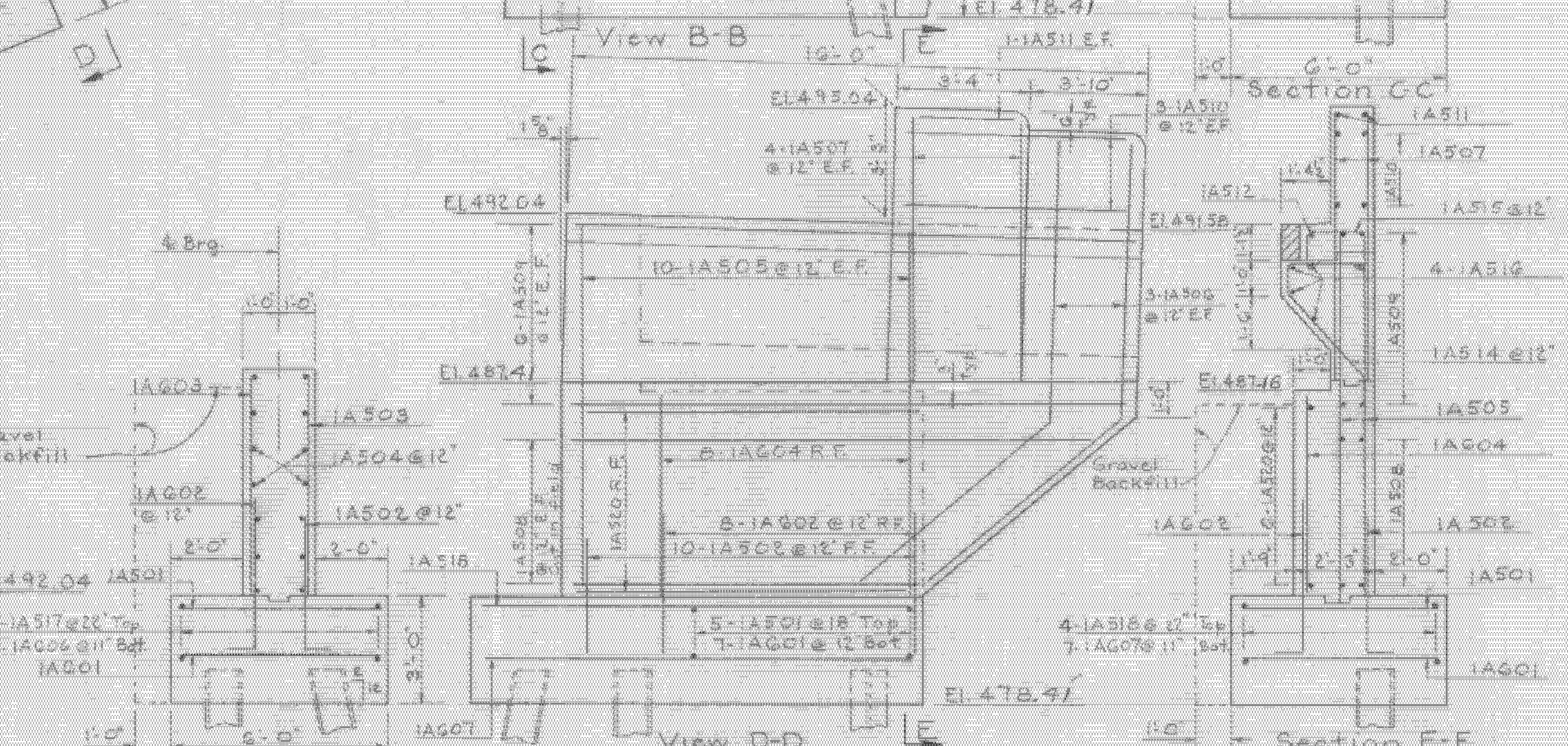
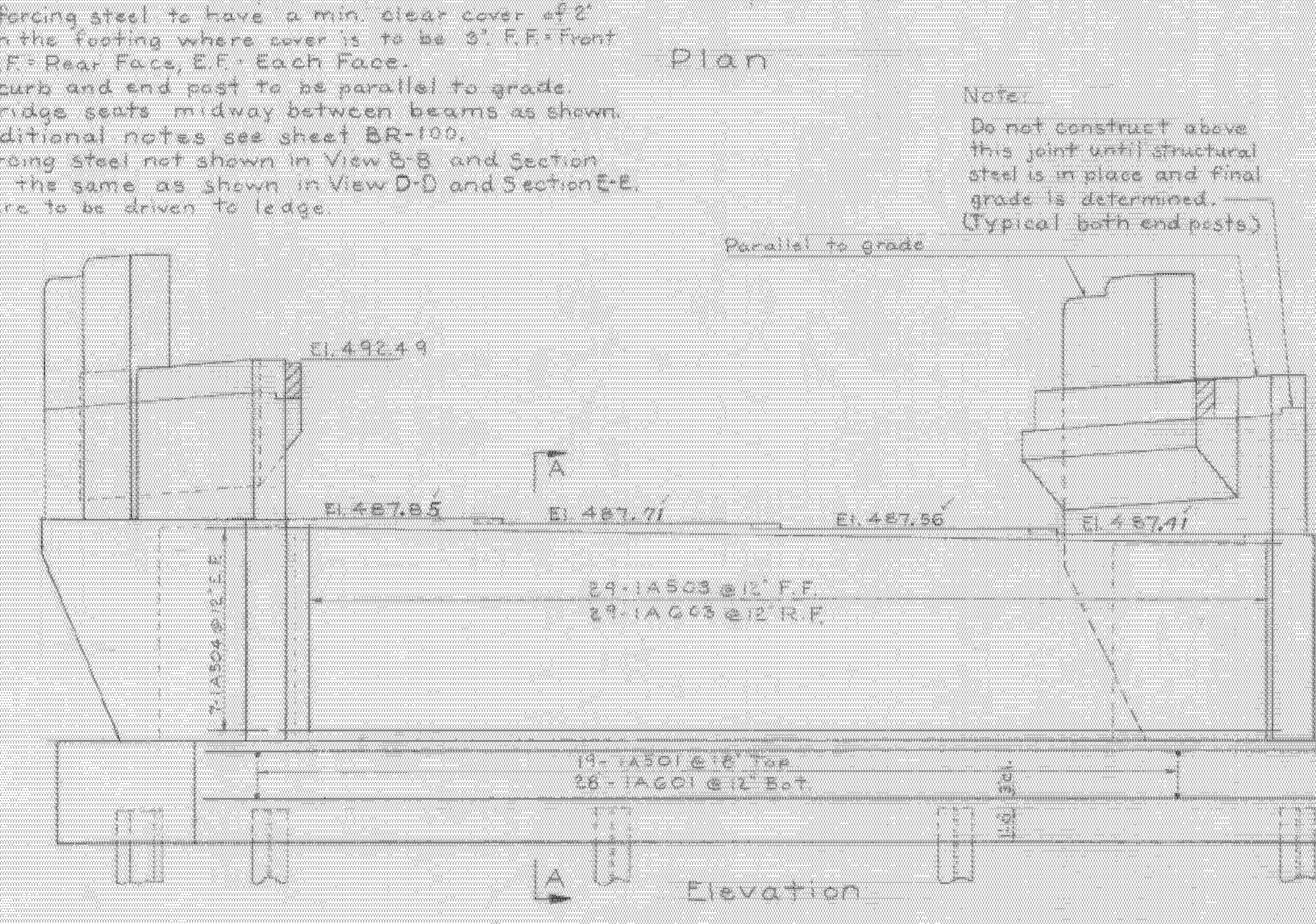
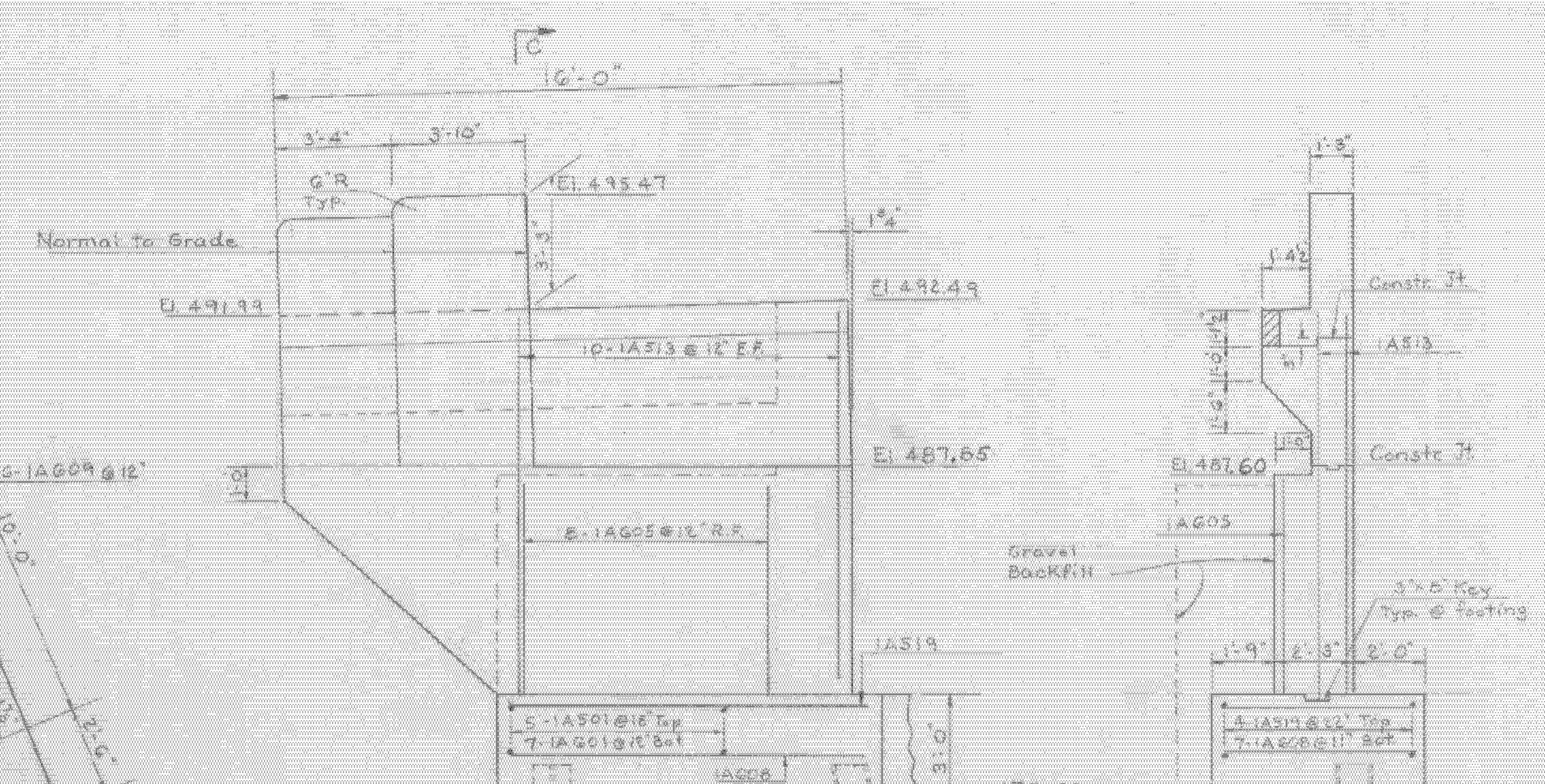
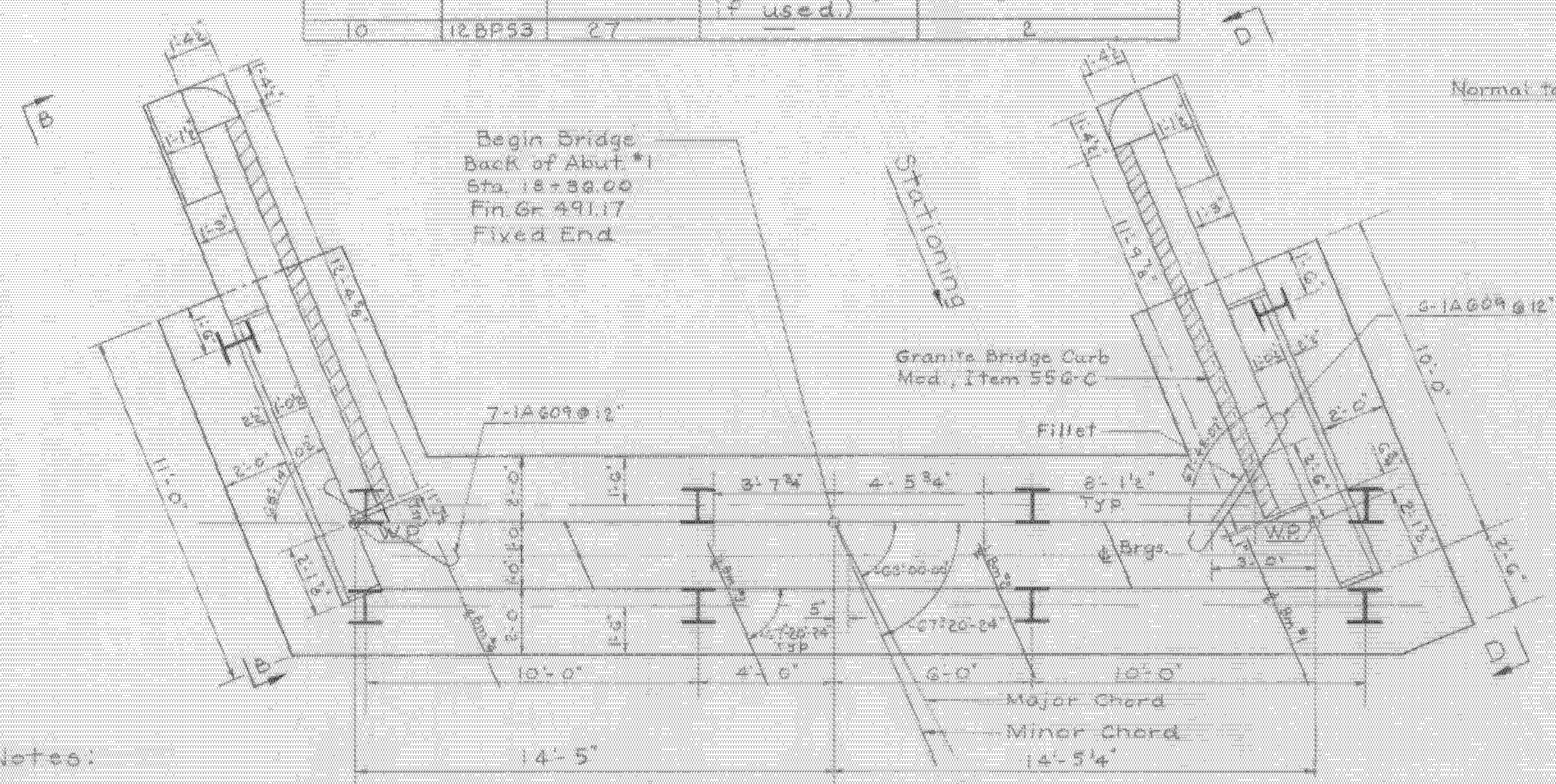


No. Piles	Size	Est Length of Piles	Splices Allowed for Piles not exceeding Plan Length (to be paid for only if used)	Splices Estimated for Piles exceeding Plan Length (to be paid for only if used)
10	12BP53	27		2



ITEM NO.	ITEM	UNIT	NET QUANTITY	TOTAL	FINAL
100-A	CHISEL EDGED OF EARTH	C.Y.			
100-B	CHISEL EDGED OF ROCK	C.Y.			
100-C	LINEAR CHISEL EDGED	C.Y.			
107	CONCRETE BRAY	C.Y.		15	15
200-B	CONC. CLASS B (600)	C.Y.		66	62
400	HPMS STEEL	TON		51.00	51.52
400	ASPHALTIC AIR CURING	S.Y.		3	3
500-B	TREATED DIMER PILING	L.F.			
600	SPLICES FOR STEEL PILING	EA.		2	0
600	STEEL PILING	L.F.		270	218
600-A	UNWEATED TREATED DIMER PILING Cut-offs	L.F.		6	52
222	Gravel Backfill	C.Y.		25	27
204	Sub-base of Crushed Rock Mod. (Under Structure)	C.Y.		45	43
501	Furnishing Equipment for Driving Piles	L.S. (See Bridge Quantity Sheet)			
550-C	Granite Bridge Curb Mod. L.F.			29	29

STATE OF WESTMINSTER - NORWICH
IM MEMB(30)
SHEET 24 OF 38
FOR REFERENCE ONLY

Weatherfield
Town or Windsor - Hartland
Route No. I 91
Abutment #1 Details
Town Rd. #37 over I 91

SCALE 3/8" = 1'-0"

SURVEYED BY Martin

DRAWN BY A.J.C. CHECKED BY F.W.B.

PROJECT No. I 91-(2) Contr. #1

SHEET 24 OF 38