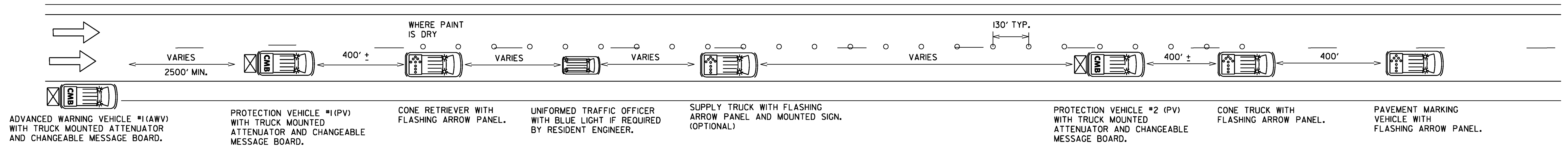


RIGHT LANE CLOSED TRAFFIC CONTROL PLAN

ADVANCE WARNING SIGNS REQUIRED AT ON RAMP AS SHOWN ON RAMP TRAFFIC CONTROL PLANS BELOW



ADVANCED WARNING VEHICLE #1(AWV) WITH TRUCK MOUNTED ATTENUATOR AND CHANGEABLE MESSAGE BOARD.

PROTECTION VEHICLE #1(PV) WITH TRUCK MOUNTED ATTENUATOR AND CHANGEABLE MESSAGE BOARD.

CONE RETRIEVER WITH FLASHING ARROW PANEL.

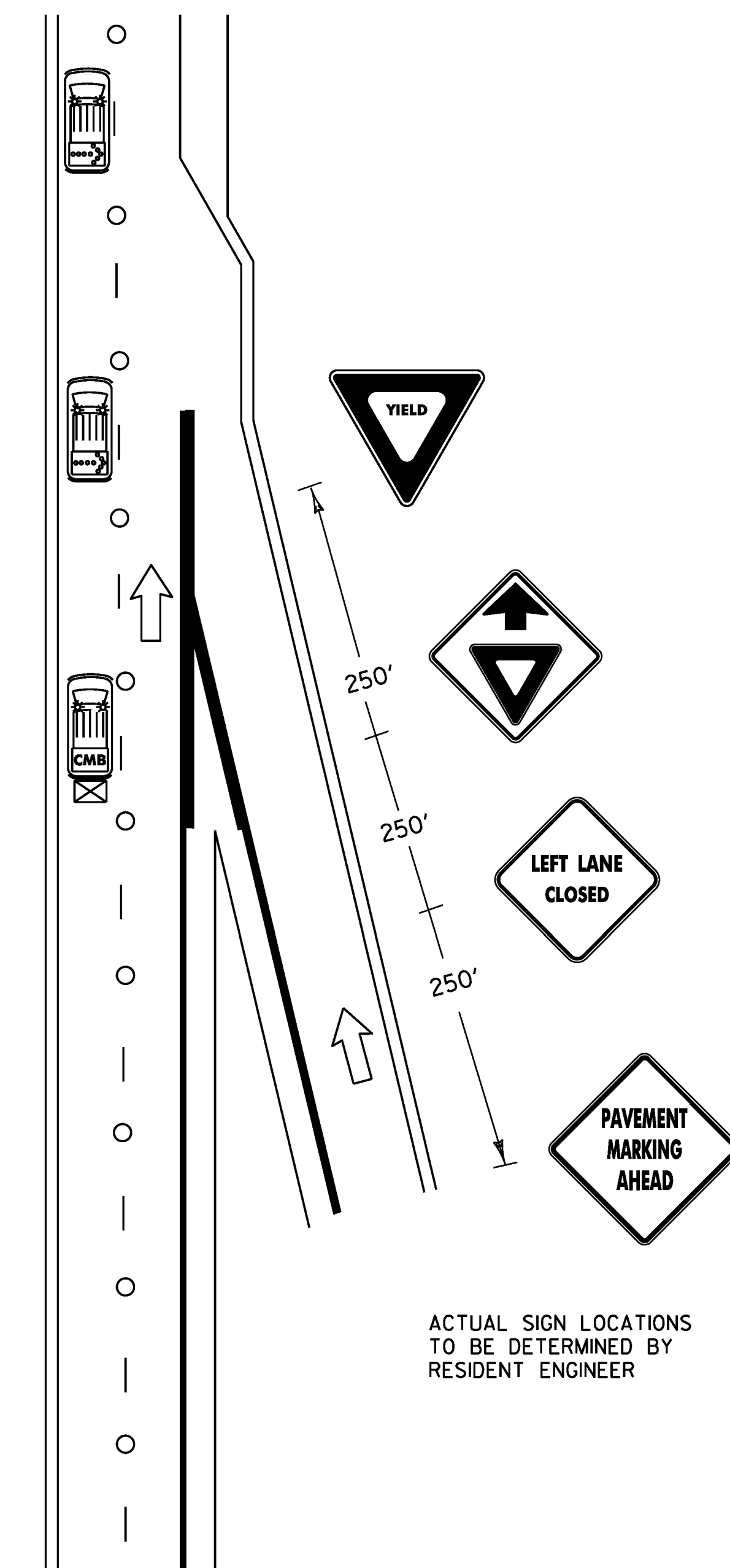
UNIFORMED TRAFFIC OFFICER WITH BLUE LIGHT IF REQUIRED BY RESIDENT ENGINEER.

SUPPLY TRUCK WITH FLASHING ARROW PANEL AND MOUNTED SIGN. (OPTIONAL)

PROTECTION VEHICLE #2 (PV) WITH TRUCK MOUNTED ATTENUATOR AND CHANGEABLE MESSAGE BOARD.

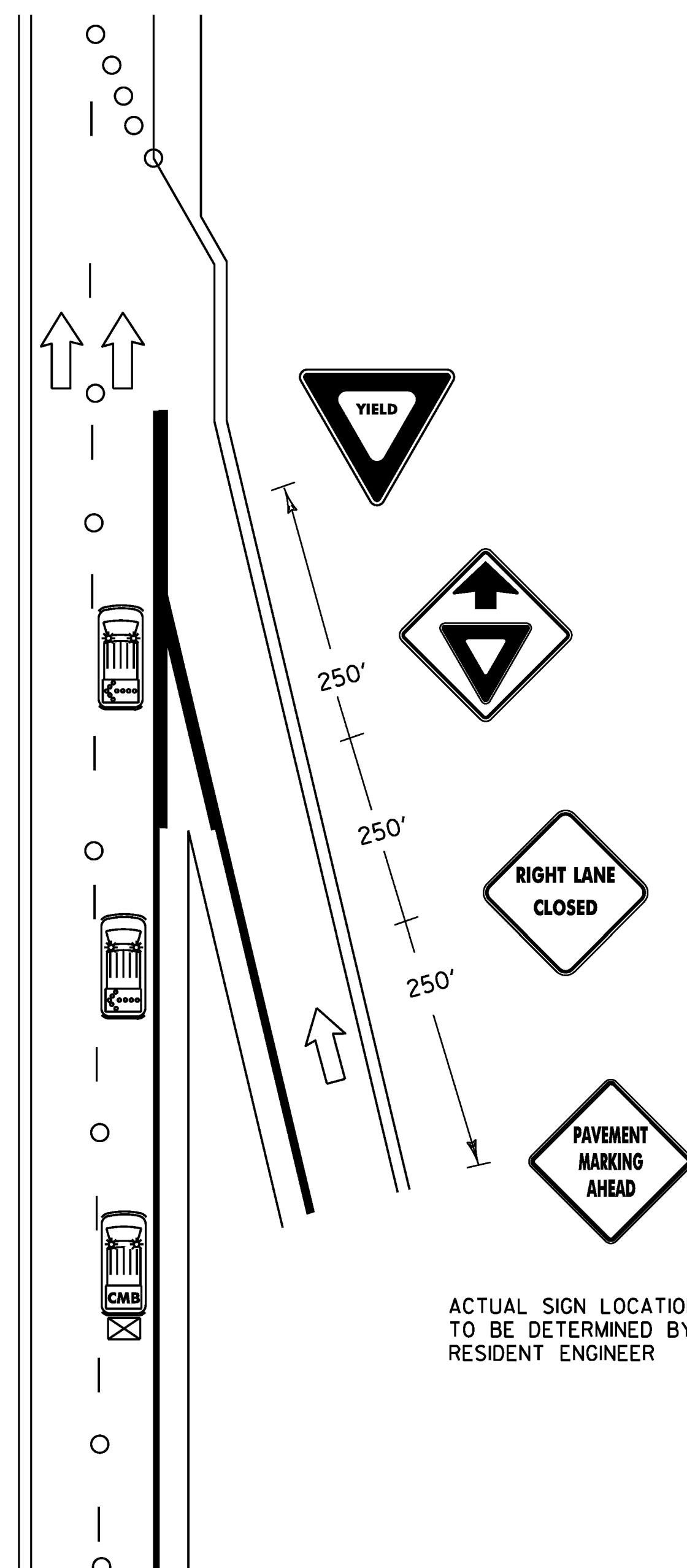
CONE TRUCK WITH FLASHING ARROW PANEL.

PAVEMENT MARKING VEHICLE WITH FLASHING ARROW PANEL.



RAMP TRAFFIC CONTROL PLAN (MAINLINE)

ADVANCED WARNING SIGNS FOR RAMP FOR SIGN DETAILS SEE SHEET 8



RAMP TRAFFIC CONTROL PLAN (EDGE LINE)

NOTES

1. ALL WORK VEHICLES USED ON THE INTERSTATE SHALL DISPLAY HIGH-INTENSITY ROTATING, FLASHING, OSCILLATING OR STROBE LIGHTS.
2. ALL PROTECTION VEHICLES SHALL BE EQUIPPED WITH A TRUCK MOUNTED ATTENUATOR AND A CHANGEABLE MESSAGE BOARD. AND WILL BE PAID FOR UNDER ITEM 900.630 SPECIAL PROVISION (TRUCK MOUNTED ATTENUATOR AWV/PV). SEE SHEET # 29 FOR MESSAGES.
3. FLASHING ARROW PANELS MOUNTED TO VEHICLES WILL NOT BE PAID FOR DIRECTLY, BUT WILL CONSIDERED INCIDENTAL TO ITEM 64.10 (TRAFFIC CONTROL)
4. ADVANCED WARNING VEHICLE #1 SHALL TRAVEL AT A VARYING DISTANCE (2500' MIN.) FROM PROTECTION VEHICLE # 1 TO ENSURE ADEQUATE SIGHT-DISTANCE FOR TRAFFIC APPROACHING FROM THE REAR.
5. UNIFORMED TRAFFIC OFFICER (UTO) REQUIRED FOR NIGHT WORK, WHEN ANY WORK IS BEING DONE ON RAMP AND AT OTHER TIMES AS DIRECTED BY RESIDENT ENGINEER
6. THE NUMBER OF CHANNELIZING DEVICES AND OTHER TRAFFIC CONTROL DEVICES SHOWN ON THIS SHEET ARE FOR ILLUSTRATIVE PURPOSES ONLY. THE ACTUAL NUMBER REQUIRED ARE TO BE DETERMINED BASED ON FIELD CONDITIONS.
7. CHANNELIZING DEVICES SHALL BE PLACED AS FOLLOWS:
TAPERS - DEVICES SHALL BE SPACED A MAXIMUM OF 'S' (THE SPEED LIMIT IN FEET) APART.
TANGENT - DEVICES SHALL BE PLACED 2 X 'S' (THE SPEED LIMIT IN FEET) APART.
8. ALL DISTANCES ARE DESIRABLE MINIMUMS, FIELD CONDITIONS SHALL CONTROL THE ACTUAL PLACEMENT.
9. CONE VEHICLES SHALL HAVE PROTECTIVE CAGES TO PROTECT THE PERSON PLACING AND RETRIEVING CONES.
10. ALL SIGNS SHALL BE PLACED ON RAMP BEFORE MARKING BEGINS IN EITHER LANE.
11. MAXIMUM ALLOWABLE LANE CLOSURE IS 3 MILES.

LEGEND

- INDICATES TRAFFIC FLOW
- FLASHING ARROW PANEL
- TRUCK MOUNTED ATTENUATOR
- CHANGEABLE MESSAGE BOARD
- 28" RETROREFLECTORIZED CONES

NOT TO SCALE

RIGHT LANE TRAFFIC CONTROL PLAN

PROJECT NAME: STATEWIDE
 PROJECT NUMBER: IMG MARK(111)
 DESIGN FILE NAME: Ila008.dgn
 PROJECT MANAGER: A GAMBLE
 IPARM FILE NAME: Ila008TCP2.1

PLOT DATE: 10-MAR-2011
 DRAWN BY: KAS
 SHEET: 7 OF 29