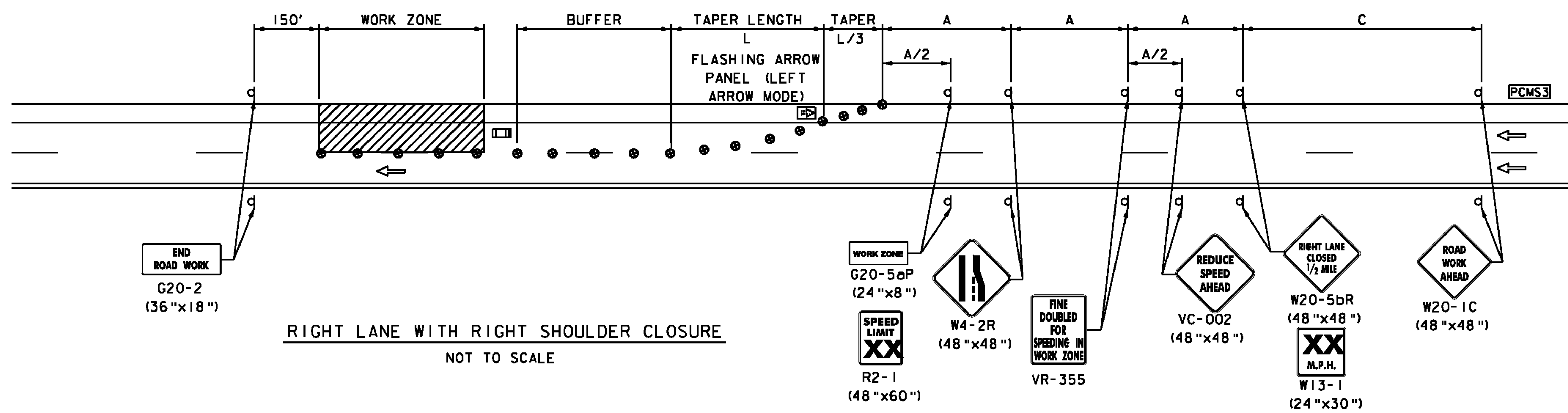
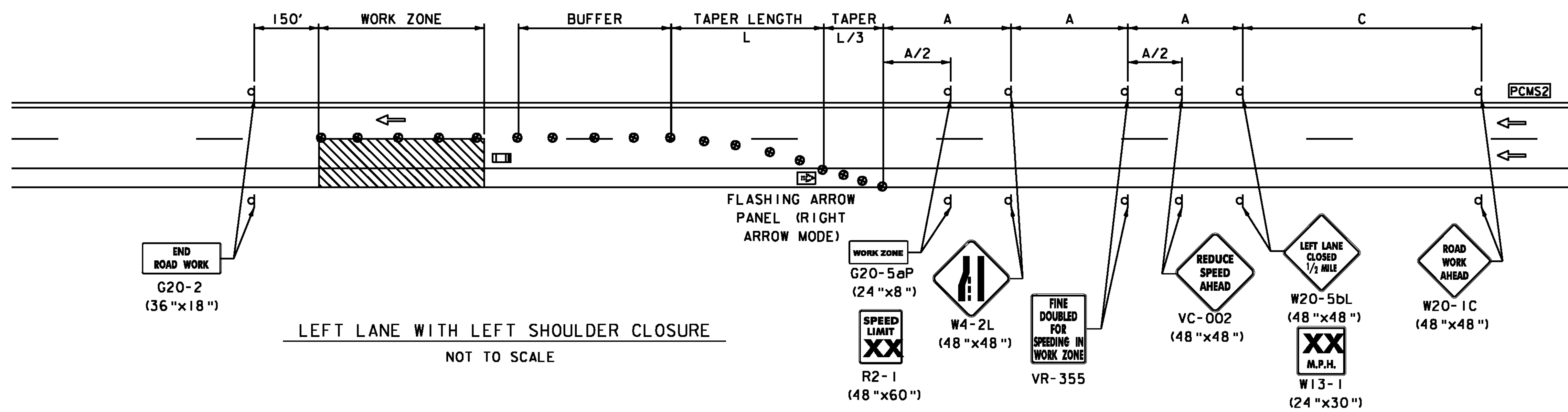


LEFT LANE CLOSURE  
NOT TO SCALE



RIGHT LANE WITH RIGHT SHOULDER CLOSURE  
NOT TO SCALE



LEFT LANE WITH LEFT SHOULDER CLOSURE  
NOT TO SCALE

SUGGESTED WORK ZONE WARNING SIGN SPACING

ROAD TYPE	DISTANCE BETWEEN SIGNS		
	A	B	C
URBAN (LOW SPEED) 25 - 30 MPH*	100 FT.	100 FT.	100 FT.
URBAN (HIGH SPEED) 35 - 40 MPH*	350 FT.	350 FT.	350 FT.
RURAL ROADWAYS*	500 FT.	500 FT.	500 FT.
FREEWAYS AND EXPRESSWAYS*	1,000 FT.	1,500 FT.	2,640 FT.

\* SPEED CATEGORY TO BE DETERMINED BY HIGHWAY AGENCY

SIGN DISTANCES ARE BASED ON VTRANS STANDARD E-103 FOR SPEED REDUCTION.

NOTE: THESE SET-UPS ARE TYPICALS FOR BIDDING PURPOSES ONLY. ROADWAY GEOMETRY MAY REQUIRE THE SET-UPS TO BE LONGER THAN THE LENGTHS NOTED. THIS IS AT THE DISCRETION OF THE ENGINEER AND WITHOUT EXTRA COMPENSATION.

KEY

- REFL. DRUM
- d SIGN
- ▨ WORK ZONE
- ← DIRECTION OF TRAFFIC
- TYPE III PORTABLE BREAKAWAY BARRICADE
- ▢ FLASHING ARROW BOARD
- ⊞ TRUCK MOUNTED ATTENUATOR (TMA)
- PCMS PORTABLE CHANGEABLE MESSAGE SIGN (PCMS)