

SHOULDER CLOSURE  
NOT TO SCALE

PCMS SIGN MESSAGES

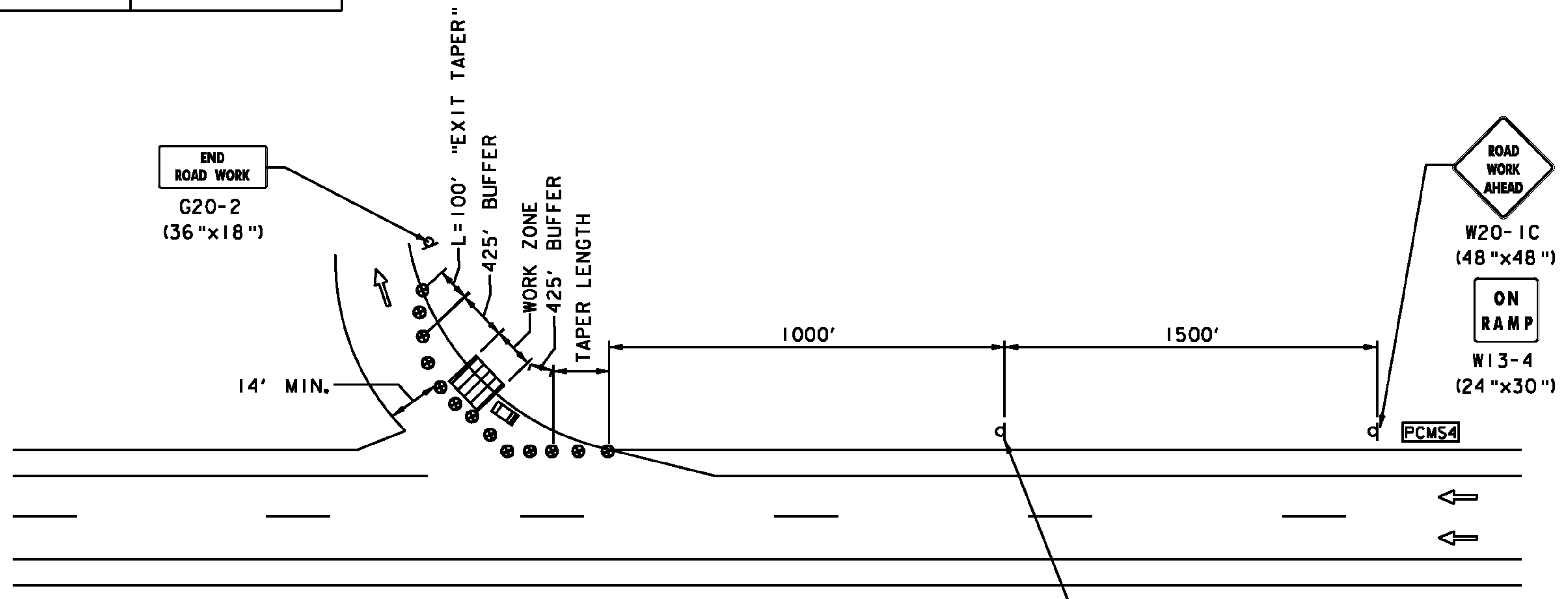
	SCREEN 1	SCREEN 2
PCMS1	SHOULDER CLOSED AHEAD	USE CAUTION
PCMS2	LEFT LANE CLOSED AHEAD	PLEASE MERGE EARLY
PCMS3	RIGHT LANE CLOSED AHEAD	PLEASE MERGE EARLY
PCMS4	RAMP WORK AHEAD	USE CAUTION

SPEED (MPH)	DISTANCE (FT)
45	360
50	425
55	495
60	570
65	645

NOTE: THESE SET-UPS ARE TYPICALS FOR BIDDING PURPOSES ONLY. ROADWAY GEOMETRY MAY REQUIRE THE SET-UPS TO BE LONGER THAN THE LENGTHS NOTED. THIS IS AT THE DISCRETION OF THE ENGINEER AND WITHOUT EXTRA COMPENSATION.

KEY

- REFL. DRUM
- d SIGN
- ▨ WORK ZONE
- ← DIRECTION OF TRAFFIC
- TYPE III PORTABLE BREAKAWAY BARRICADE
- ⊠ FLASHING ARROW BOARD
- ⊞ TRUCK MOUNTED ATTENUATOR (TMA)
- PCMS PORTABLE CHANGEABLE MESSAGE SIGN (PCMS)



PARTIAL EXIT RAMP CLOSURE  
NOT TO SCALE

ROAD TYPE	DISTANCE BETWEEN SIGNS		
	A	B	C
URBAN (LOW SPEED) 25 - 30 MPH*	100 FT.	100 FT.	100 FT.
URBAN (HIGH SPEED) 35 - 40 MPH*	350 FT.	350 FT.	350 FT.
RURAL ROADWAYS*	500 FT.	500 FT.	500 FT.
FREEWAYS AND EXPRESSWAYS*	1,000 FT.	1,500 FT.	2,640 FT.

\* SPEED CATEGORY TO BE DETERMINED BY HIGHWAY AGENCY

SIGN DISTANCES ARE BASED ON VTRANS STANDARD E-103 FOR SPEED REDUCTION.

PROJECT NAME: HARTFORD SHARON  
 PROJECT NUMBER: FITS503  
 FILE NAME: z06e142TM1.dgn  
 PROJECT LEADER: J. YOUNG  
 DESIGNED BY: P. VASILIOU  
 TRAFFIC MANAGEMENT DETAILS 1  
 PLOT DATE: 9/15/2010  
 DRAWN BY: S. GUNN  
 CHECKED BY: J. WILSON  
 SHEET 67 OF 70