

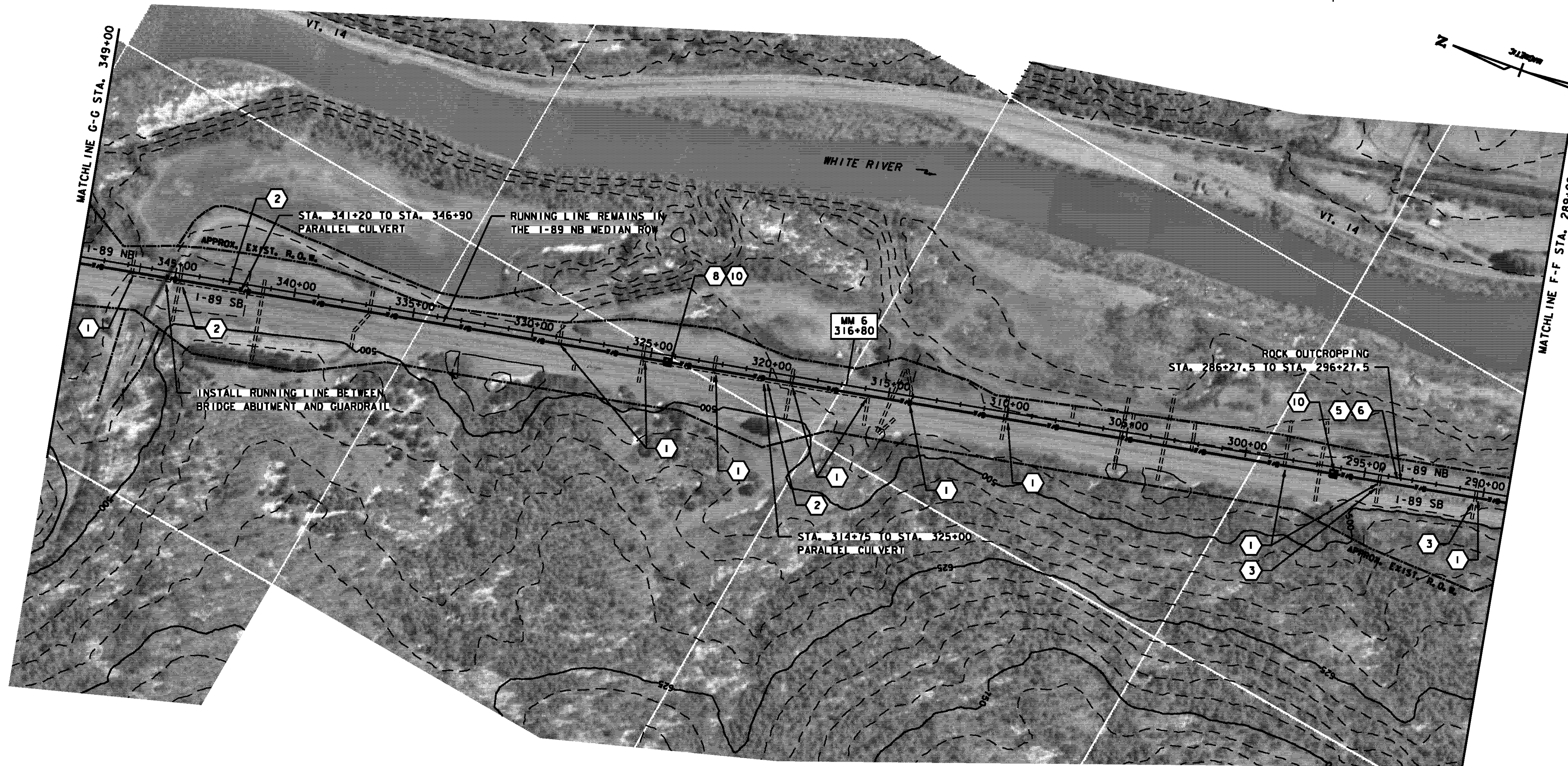
HH#22
324+28

HH#21
296+28








CAT PLOW

CAT PLOW

TRENCH



LEGEND

-  PROPOSED HANDHOLE
-  PROPOSED SPLICE VAULT
-  PROPOSED COMMUNICATION CONDUIT
-  EXISTING LIMIT OF WETLAND
-  CONSTRUCTION NOTE
-  ACTION ITEM
-  EXISTING MANHOLE

LAYOUT PLAN
SCALE 1" = 200'-0"
200 0 200

TABULATION OF CONSTRUCTION METHODOLOGY	
CAT TRACTOR PLOW:	5190'
SPIDER PLOW:	0
TRENCH AND PLACE DUCT OR CONDUIT AS NOTED ON PLAN DRAWINGS:	700'
DIRECTIONAL BORE - 8" BSP CASING:	0
HANDHOLES - 2 AT EACH LOCATION:	2
DIG TEST HOLES - LOCATE FOREIGN STRUCTURES:	11
BRIDGE ATTACHMENT:	0
INSTALL CABLE MARKERS:	9
PULL FIBER OPTIC CABLE INTO DUCT:	6200'
SPLICE VAULT & HANDHOLE SETUP:	0

PROJECT NAME:	HARTFORD SHARON	FILE NAME:	z06e142LA7.dgn	PLOT DATE:	9/15/2010
PROJECT NUMBER:	FITS503	PROJECT LEADER:	J. YOUNG	DRAWN BY:	S. GUNN
		DESIGNED BY:	J. DURANTE	CHECKED BY:	J. YOUNG
		LAYOUT PLAN (SHEET 7 OF 14)		SHEET 17	OF 70