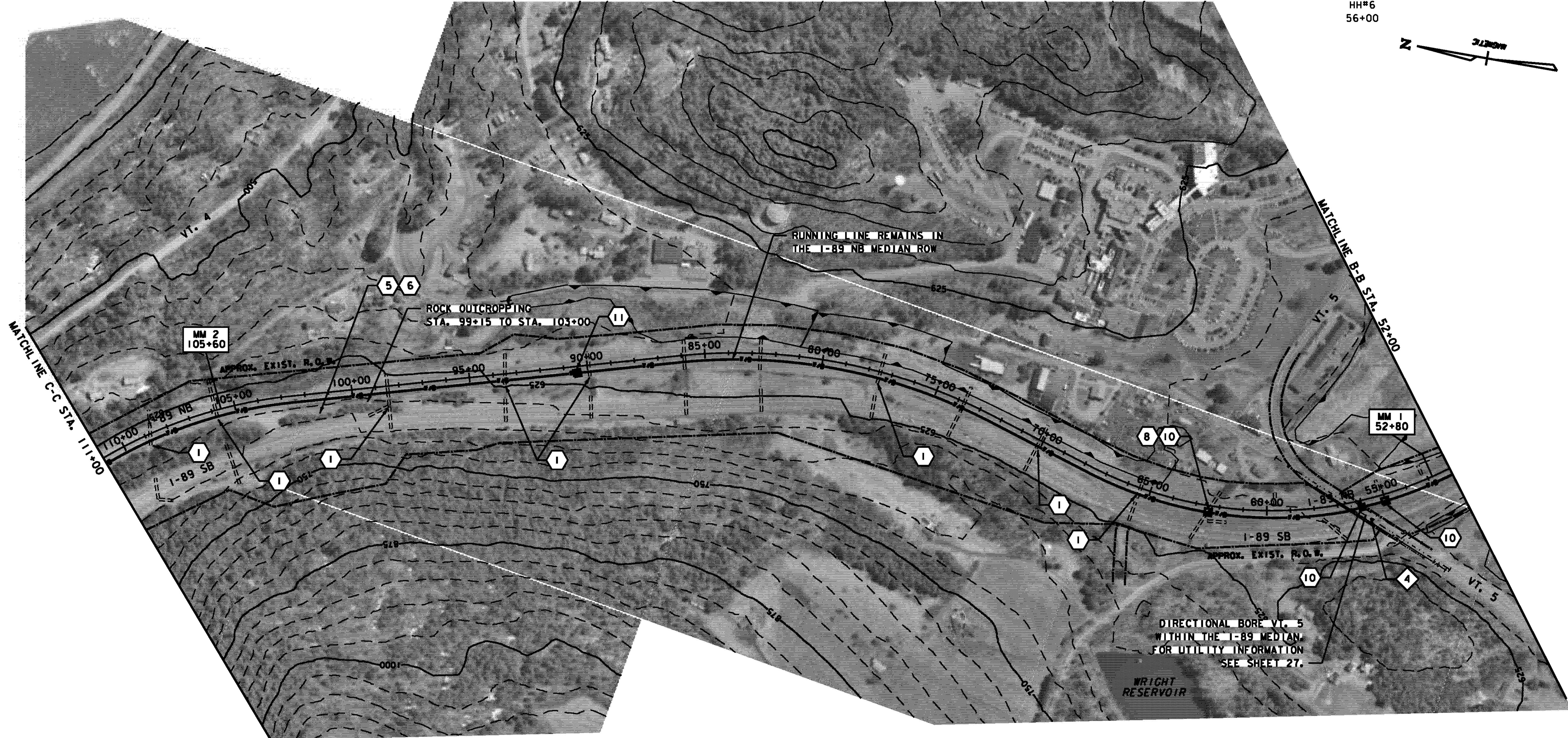


CAT PLOW 103+00 TRENCH 98+00 CAT PLOW HH#8S 90+45 CAT PLOW HH#7 62+30 DIRECTIONAL DRILL/BORE HH#5 55+00 CAT PLOW HH#6 56+00



DIRECTIONAL BORE VT. 5 WITHIN THE I-89 MEDIAN FOR UTILITY INFORMATION SEE SHEET 27.

LEGEND

	PROPOSED HANDHOLE		CONSTRUCTION NOTE
	PROPOSED SPLICE VAULT		ACTION ITEM
	PROPOSED COMMUNICATION CONDUIT		EXISTING MANHOLE
	EXISTING LIMIT OF WETLAND		

LAYOUT PLAN
SCALE 1" = 200'-0"
200 0 200

TABULATION OF CONSTRUCTION METHODOLOGY

CAT TRACTOR PLOW:	3840'
SPIDER PLOW:	0
TRENCH AND PLACE DUCT OR CONDUIT AS NOTED ON PLAN DRAWINGS:	500'
DIRECTIONAL BORE - 8" BSP CASING:	675'
HANDHOLES - 2 AT EACH LOCATION:	4
DIG TEST HOLES - LOCATE FOREIGN STRUCTURES:	8
BRIDGE ATTACHMENT:	0
INSTALL CABLE MARKERS:	11
PULL FIBER OPTIC CABLE INTO DUCT:	6175'
SPLICE VAULT & HANDHOLE SETUP:	0

PROJECT NAME: HARTFORD SHARON	
PROJECT NUMBER: FITS503	
FILE NAME: z06e142LA3.dgn	PLOT DATE: 9/15/2010
PROJECT LEADER: J. YOUNG	DRAWN BY: S. GUNN
DESIGNED BY: J. DURANTE	CHECKED BY: J. YOUNG
LAYOUT PLAN (SHEET 3 OF 14)	SHEET 13 OF 70