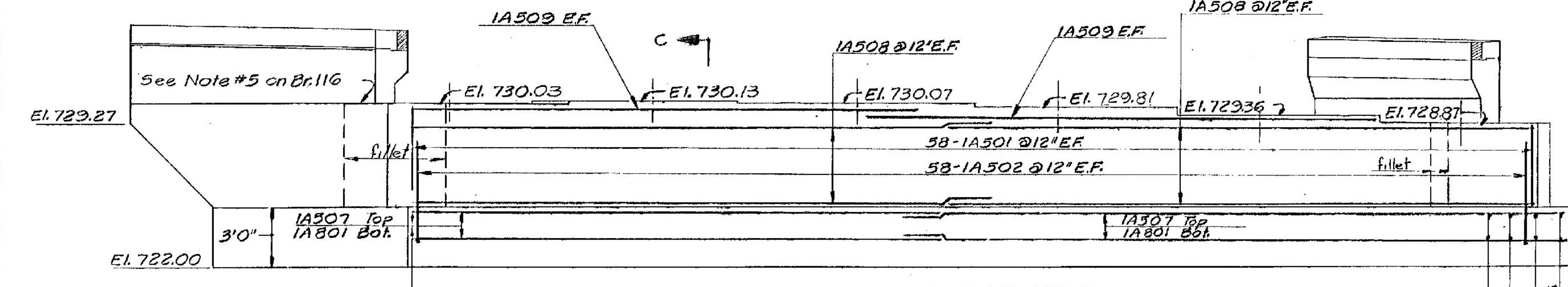
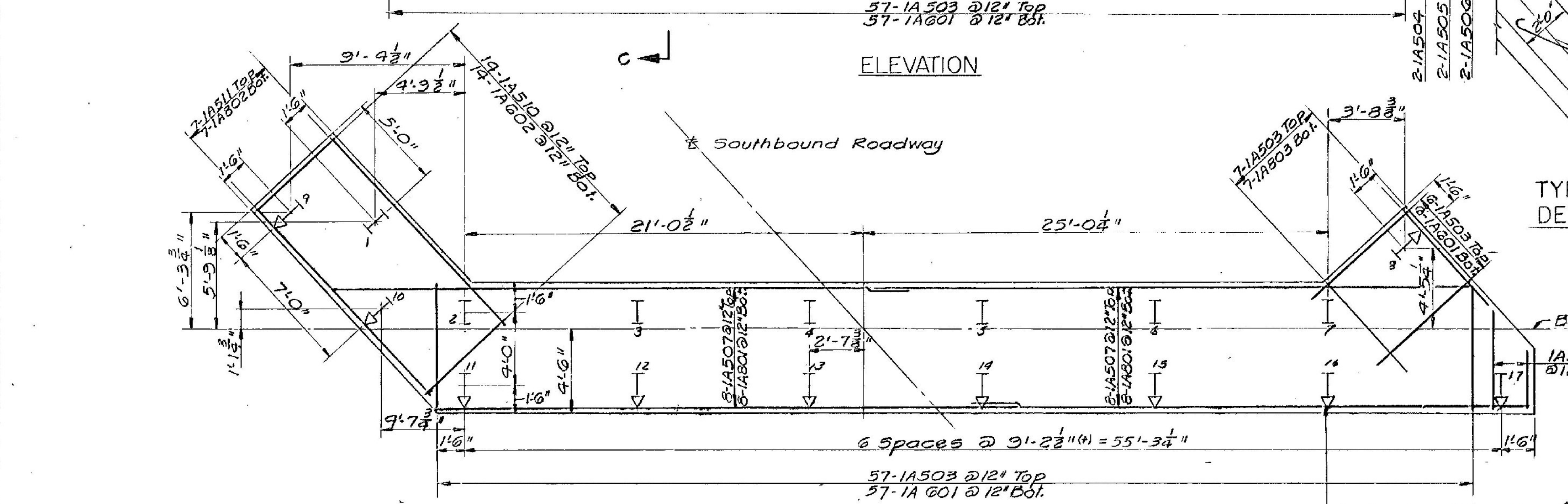


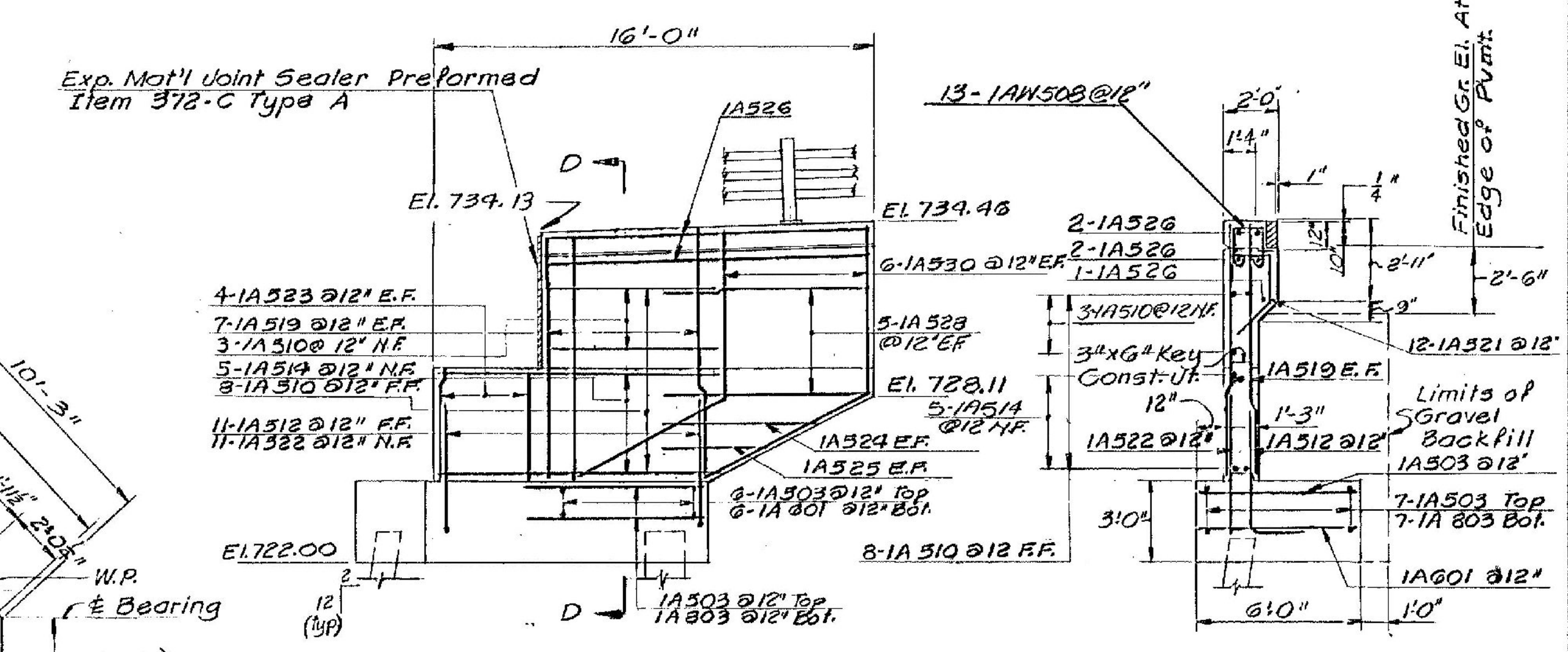
PLAN



ELEVATION

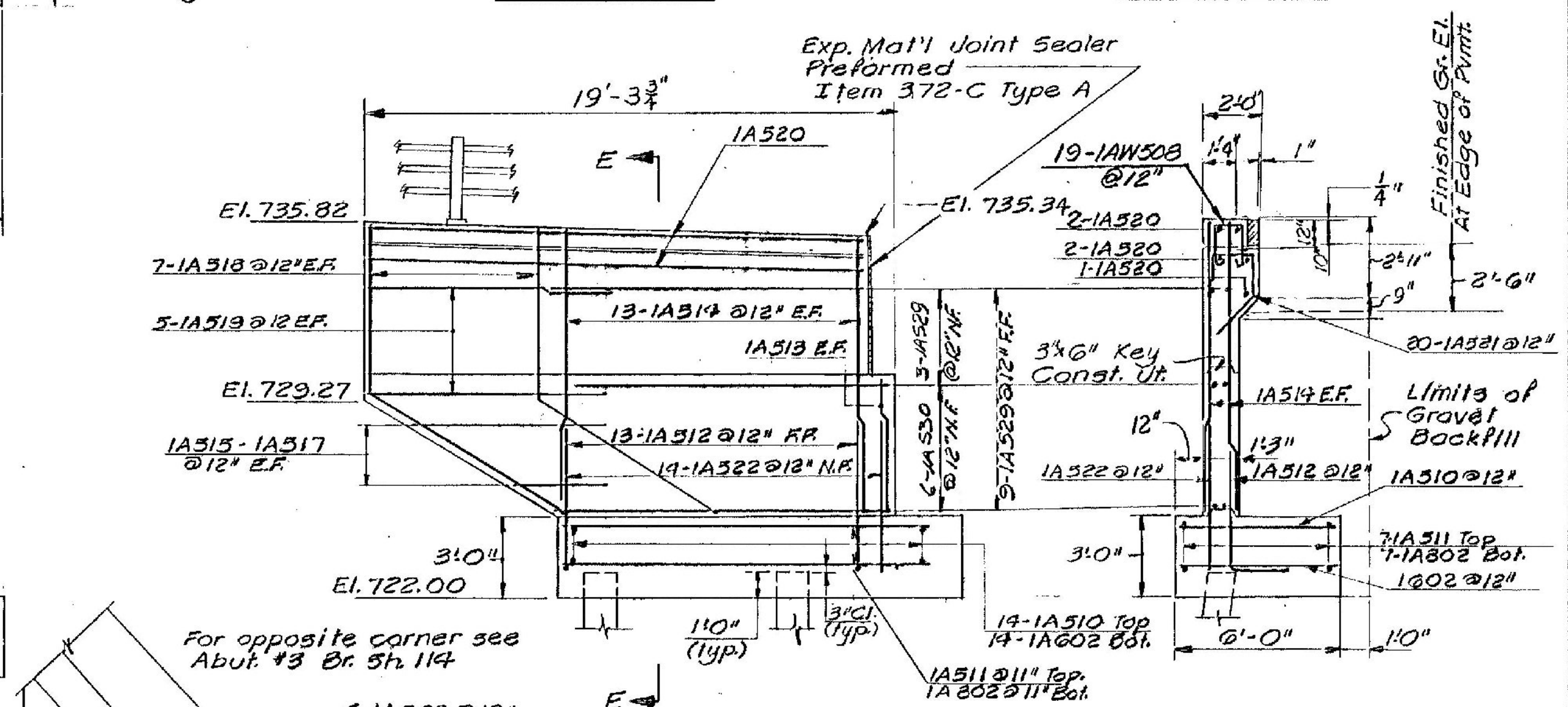


PILING LAYOUT



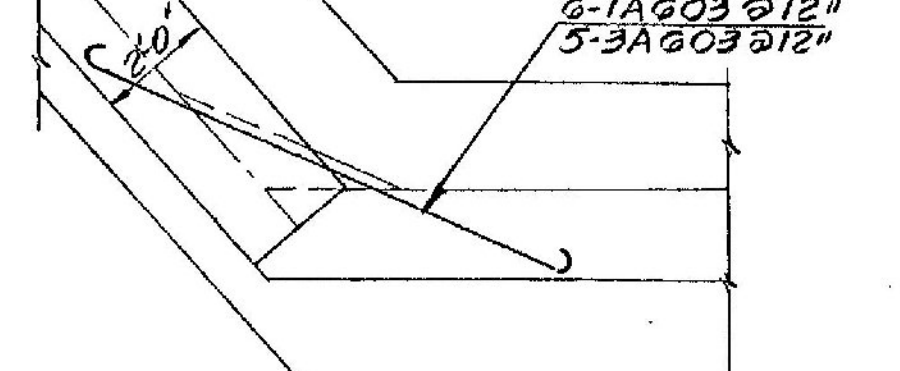
SECTION B-B

SECTION D-D

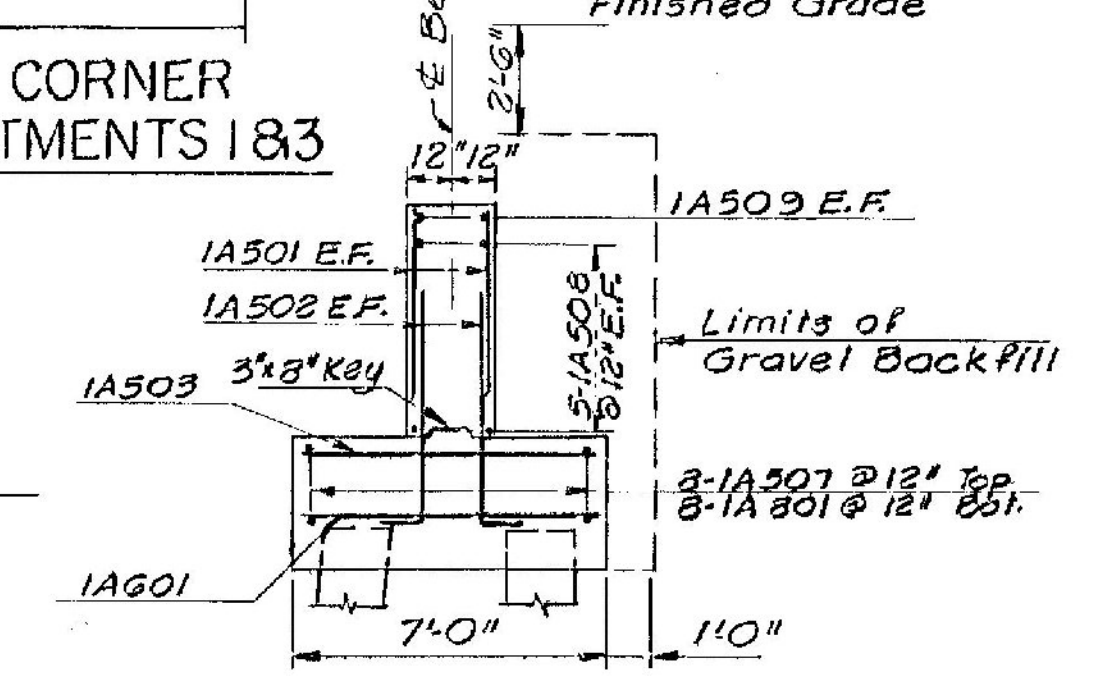


SECTION A-A

SECTION E-E



TYPICAL LT. CORNER DETAIL ABUTMENTS 1&3



SECTION C-C

1. Changed curb from 2'-8" to 2'-0". Curb to curb from 38'-0" to 39'-4". Removed cheekwalls. Changed reinforcing steel accordingly. - R. Resti 3/69 - OK'd by

**STATE OF VERMONT**  
DEPARTMENT OF HIGHWAYS

PROJECT IRASBURG - DERRY  
TOWN OF IRASBURG

ROUTE NO. 191 STA. 2539+  
991 OVER BARTON RIVER AND SA# 3

ABUTMENT # 1

SCALE 1" = 1'-0"

IN CHARGE C. TERENZIO

DRAWN BY J.M.B. CHECKED BY A. CENTORE

PROJECT No. 191-3(8) 9-67  
SHEET 191 OF 605 BR. 112

LYNDON-IRASBURG  
IM MEMB(29)  
SHEET 53 OF 55  
BRIDGE NO. 107S  
FOR REFERENCE ONLY