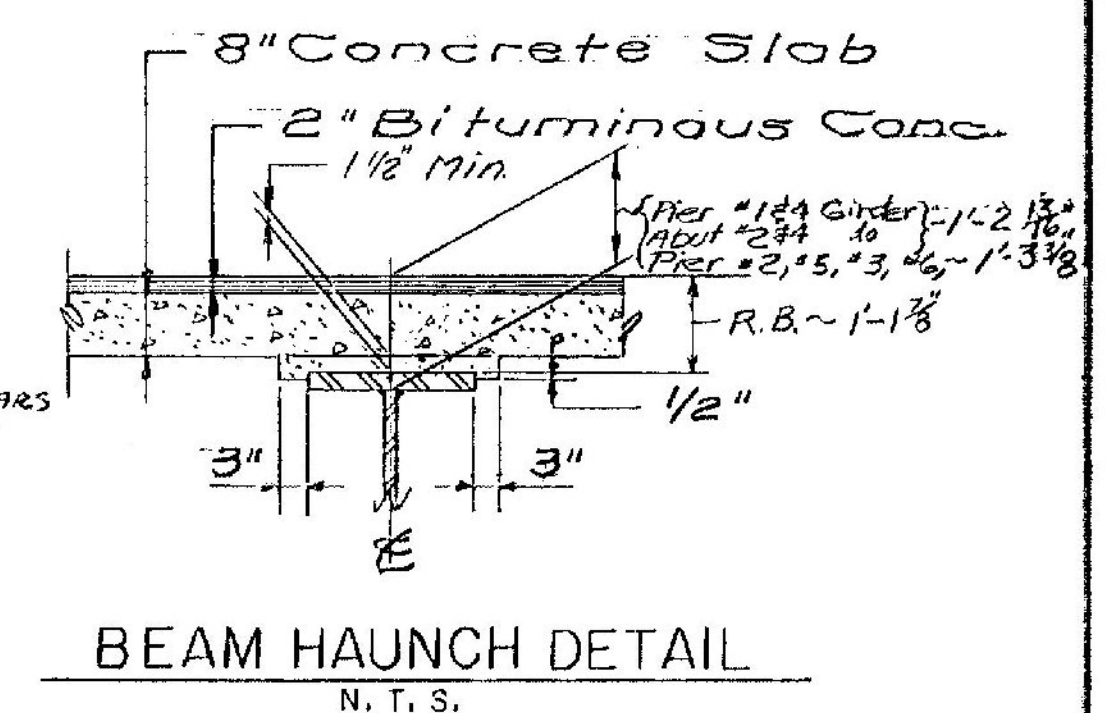


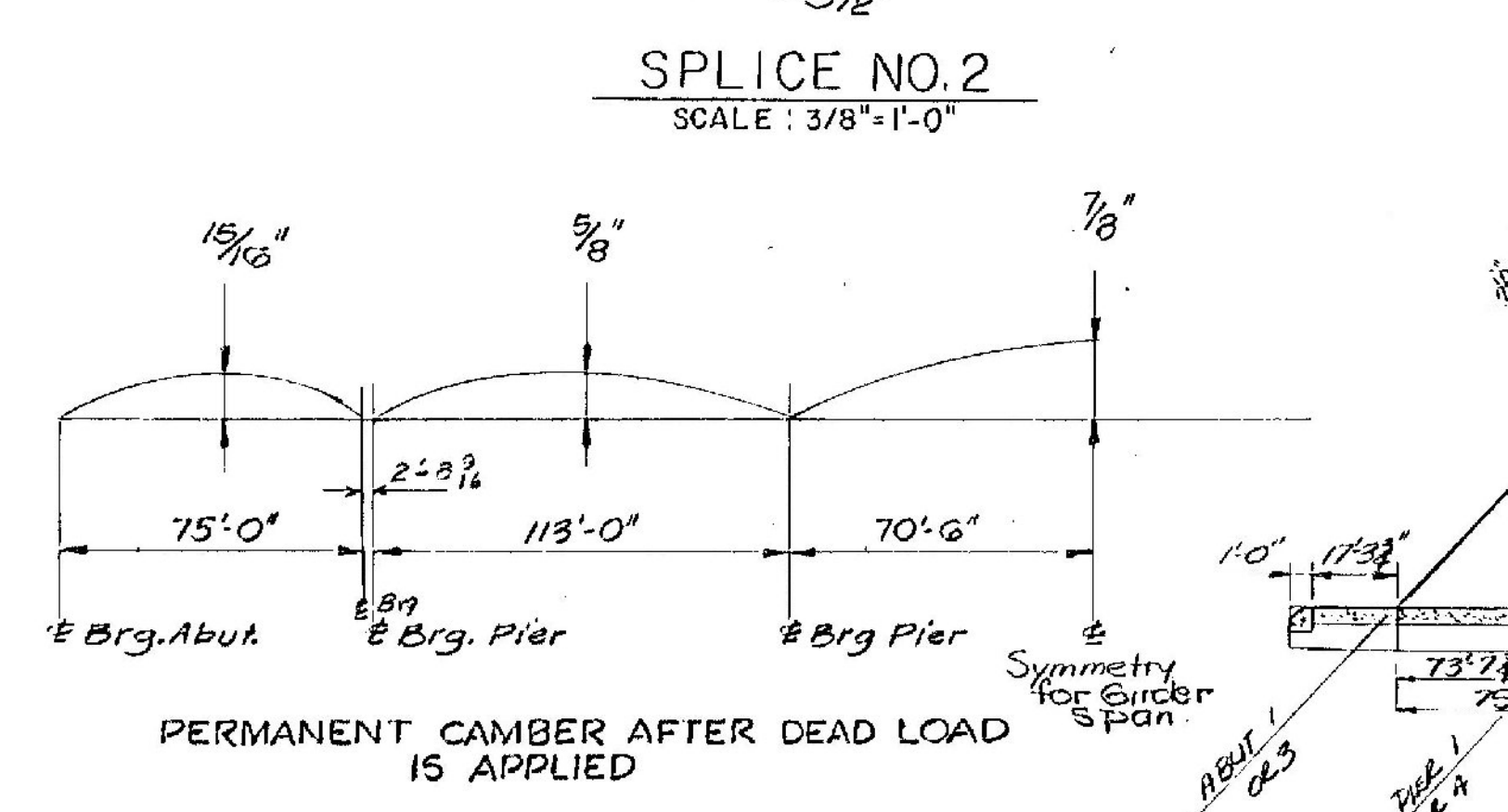
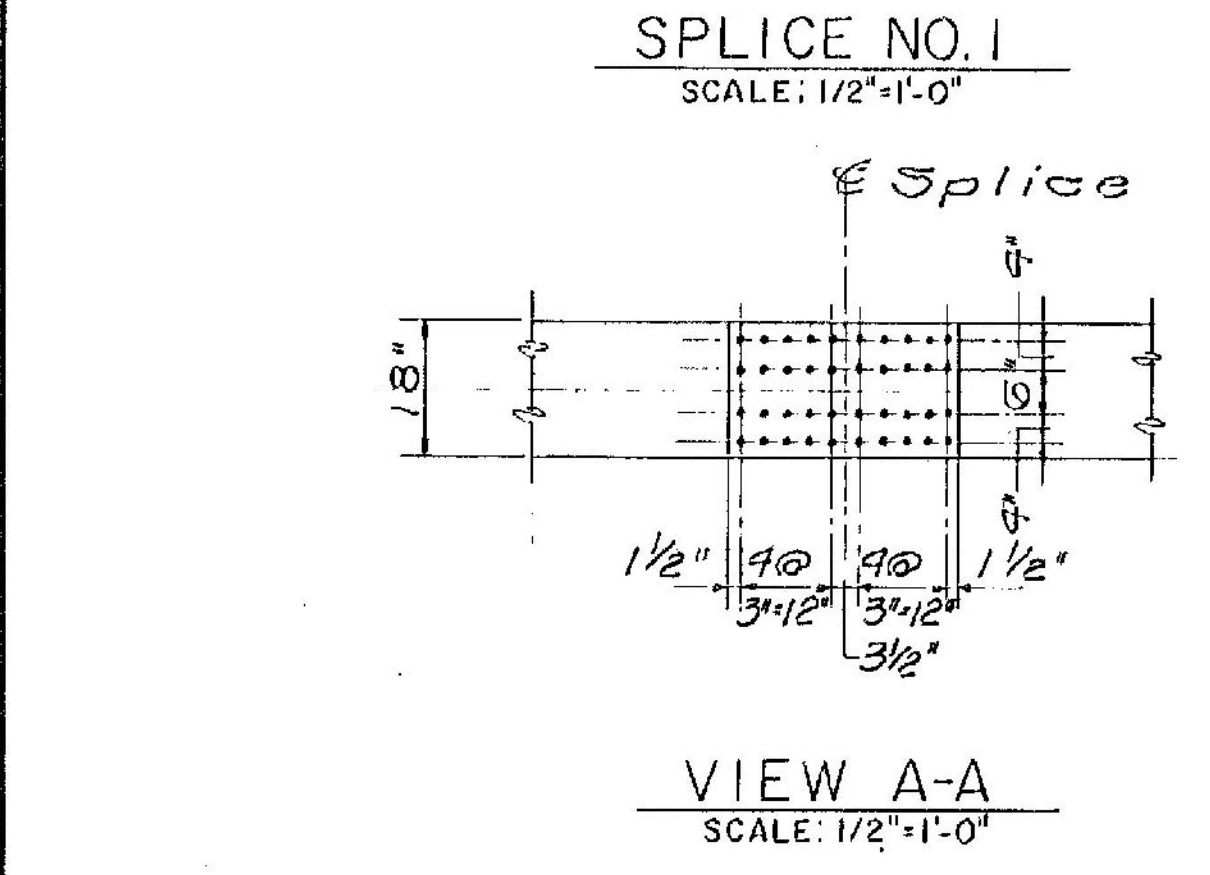
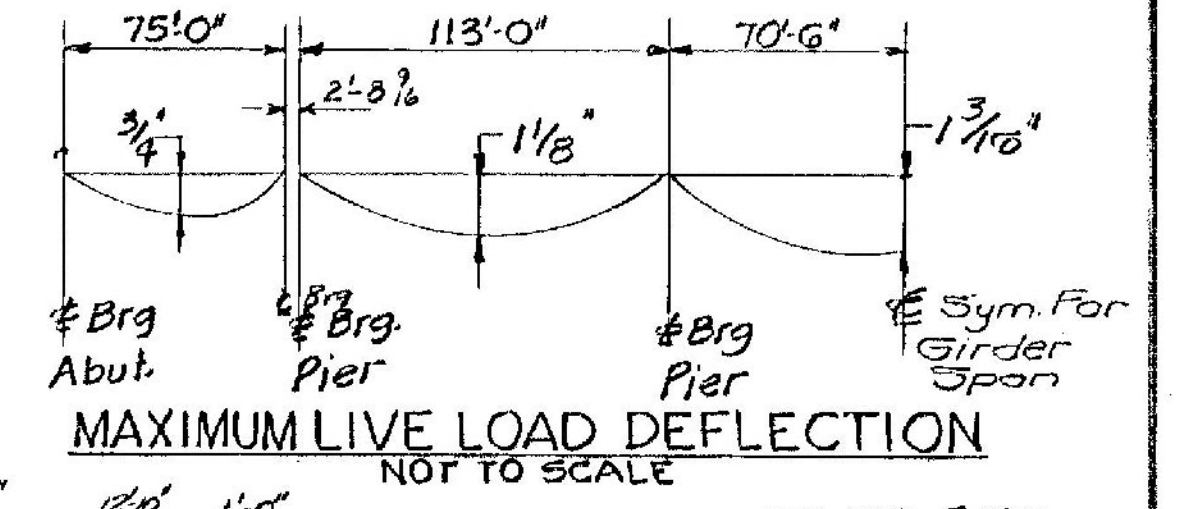
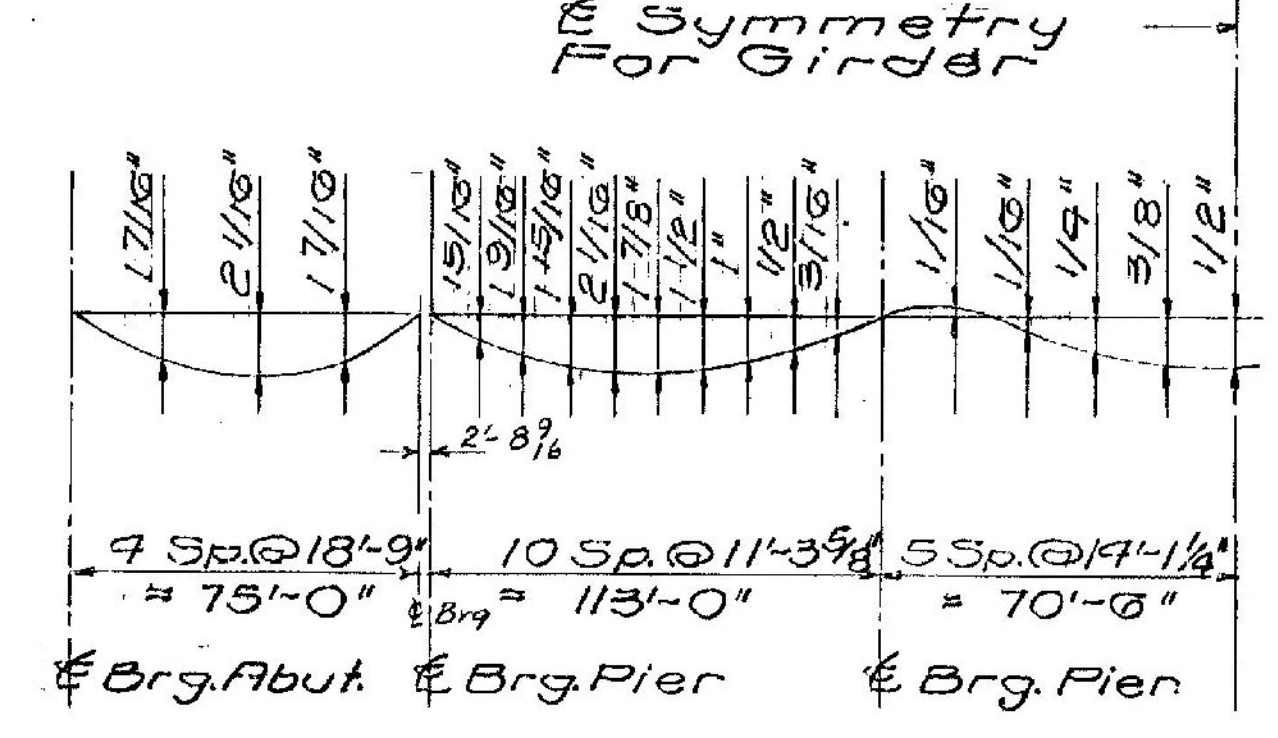
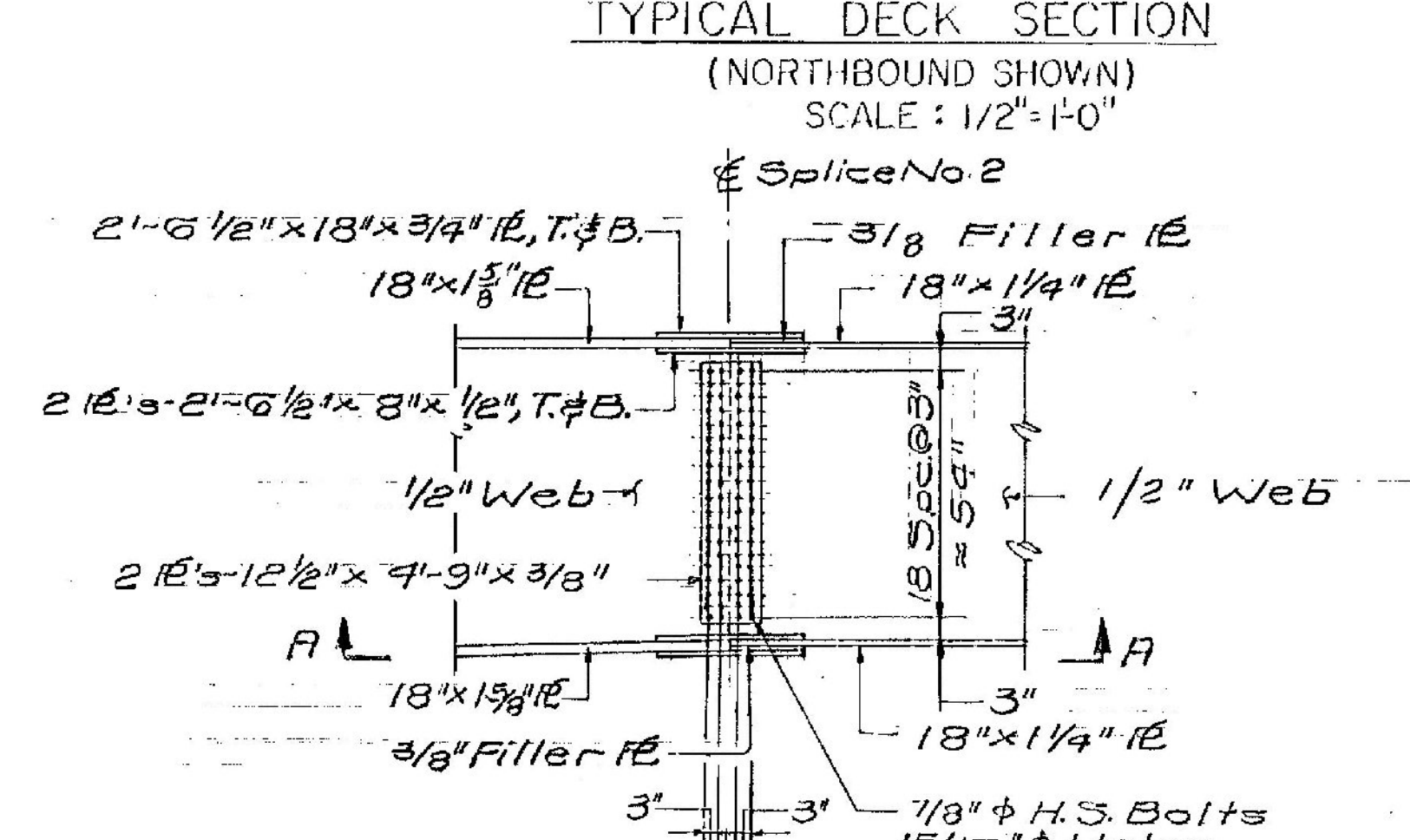
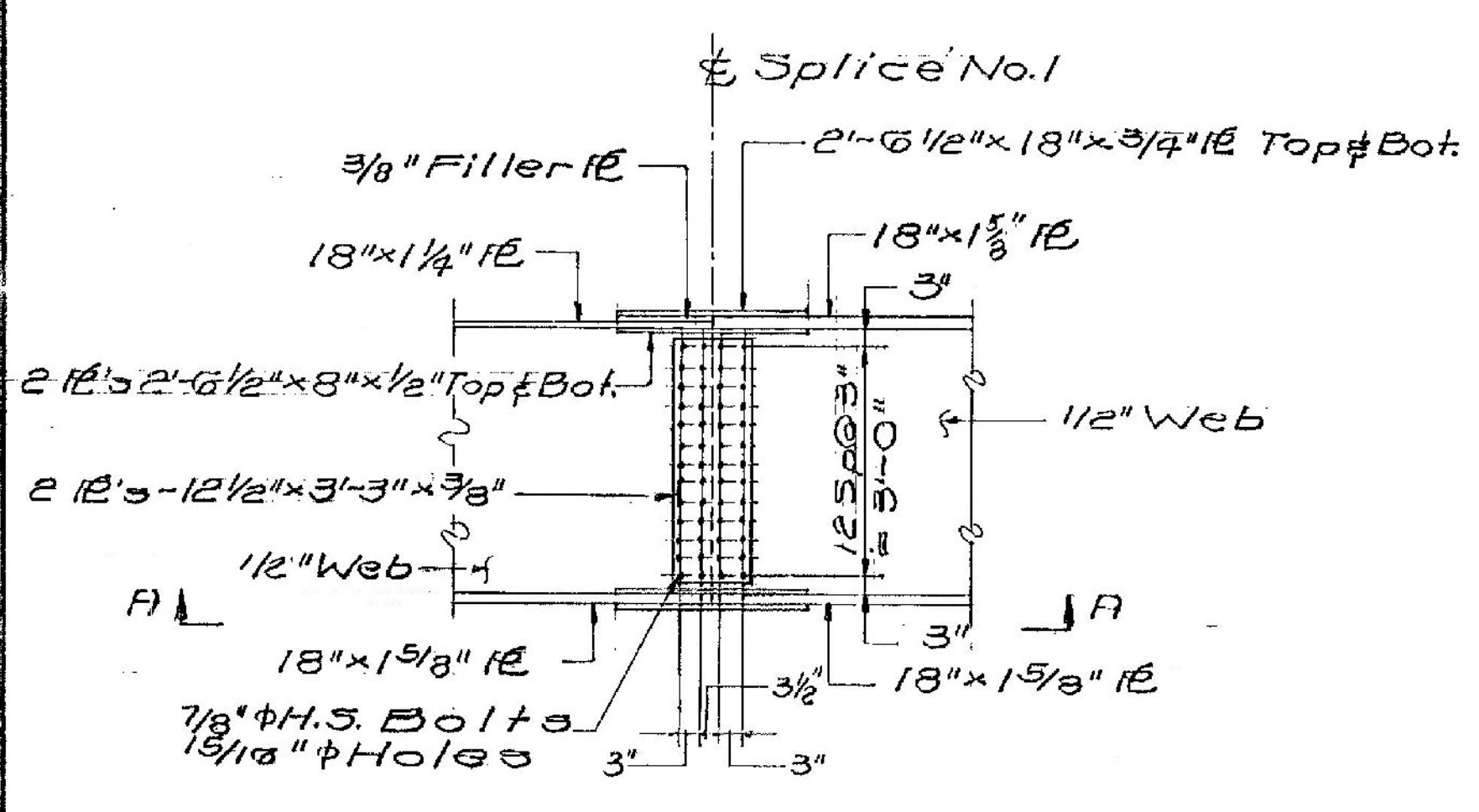
Floor Slab to be concrete, class AA 8' thick, dapped as shown at Beam Haunch, Surface to be finished with a self-propelled concrete finishing machine. Partial parabolic crown, as per detail, to be obtained by stepping bridge seats. Cut 5501 Transverse Bars at skew end and use cut off on opposite end.

Note: Water Repellent, Item 990 Shall Be Used on Top of Safety Walk And on The Fascia And Back To The Fascia Beam Under The Slab.

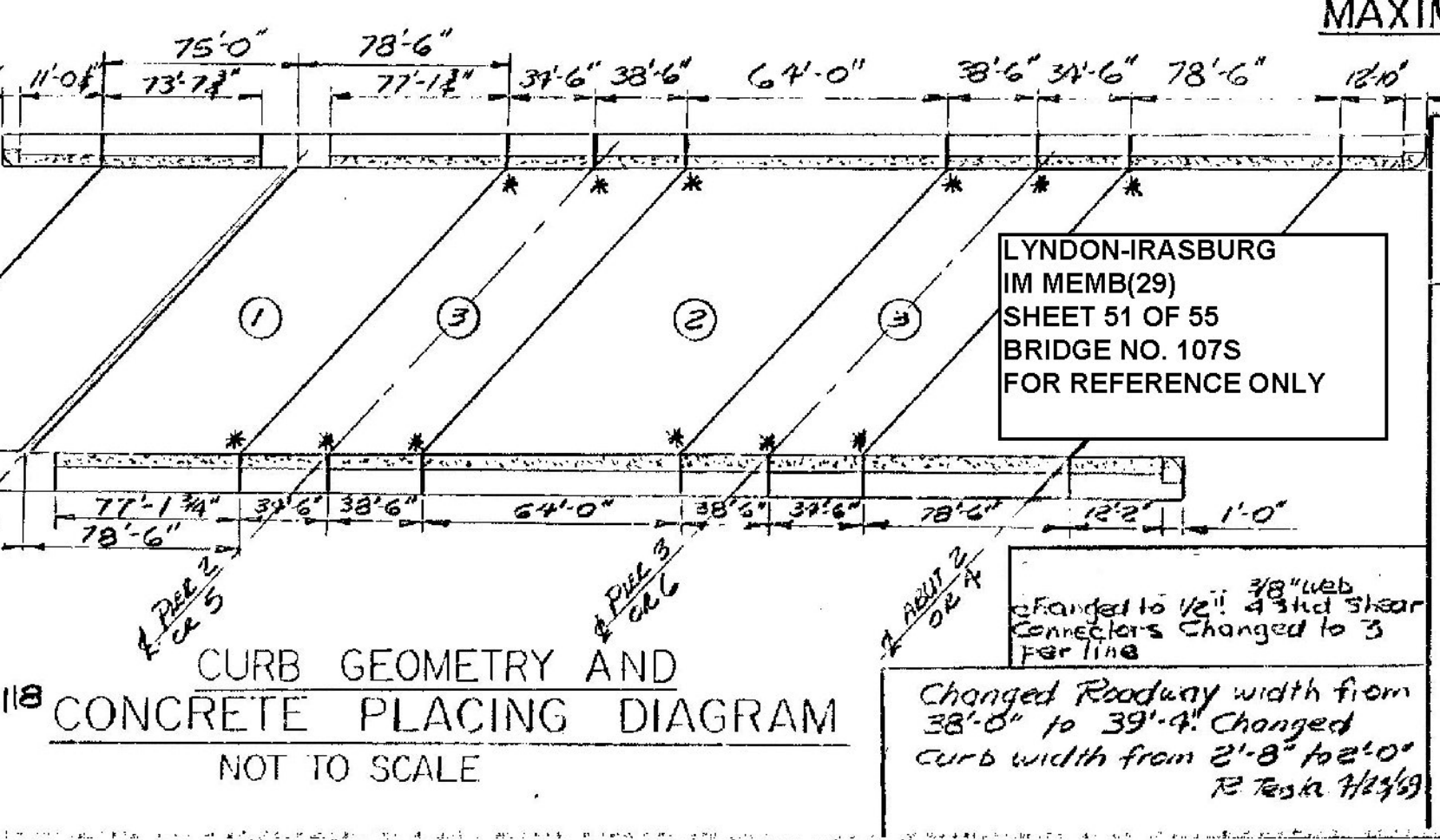


SUPERSTRUCTURE NOTES:

- For general notes and design stresses see std. sh. SCB-D1-67
- For details of shear connectors see std. sh. SCB-D2-67
- For bearing details at abutments see std. sh. SCB-D8-67 & Br 111 & Br 108
- All cover plate welds to be 3/8" fillet continuous shop welds.
- All field connections to be made with 3/4" High Strength Bolts with 1/8" Holes.
- Structural Steel shall be ASTM A-36-62T unless otherwise noted.
- Scuppers to be placed @ 50' (t) except as noted. Do not place above SA-3 or Railroad.
- For curtain wall details, Approach Slab bracket details, See SCB-D2-67, Detail A.



* - For Curb Joint Detail See BR 118
For Detail at Pier 144 See BR 110
For Detail at Abut 143 See BR 117
For Detail at Abut 244 See BR 116



BR 109 of 129

STATE OF VERMONT
DEPARTMENT OF HIGHWAYS

PROJECT IRASBURG-DERBY
TOWN OF IRASBURG

ROUTE No. 191 STA. 2539

191 OVER BARTON RIVER AND SA 3

DECK SECTION AND SPLICE
SCALE AS NOTED

IN CHARGE C. TERENZIO

DRAWN BY J.M.B. CHECKED BY A. CENTORE

PROJECT No. 191-3(8) 9-67
SHEET 178 OF 605 BR 109