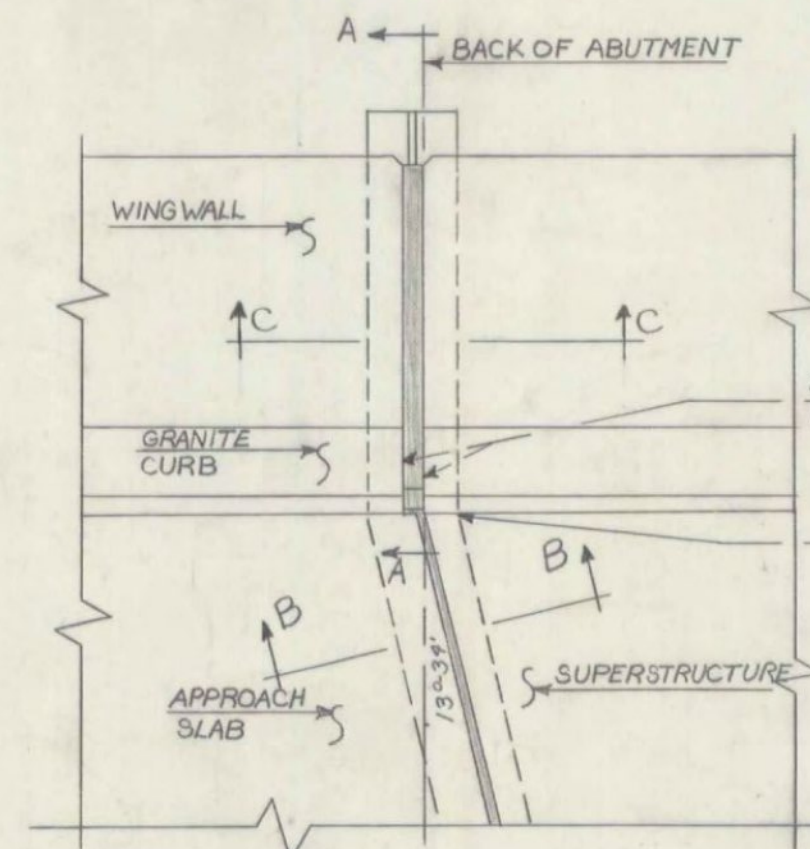
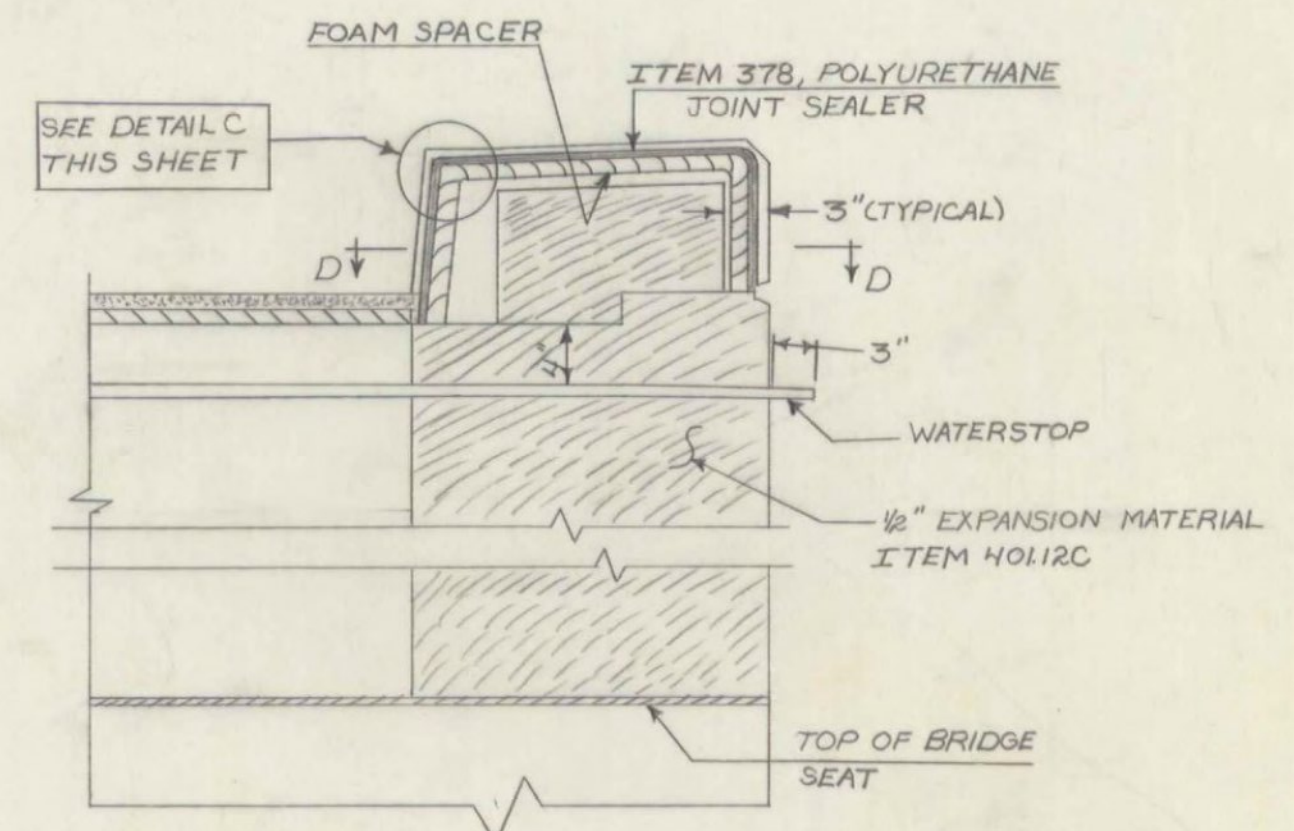


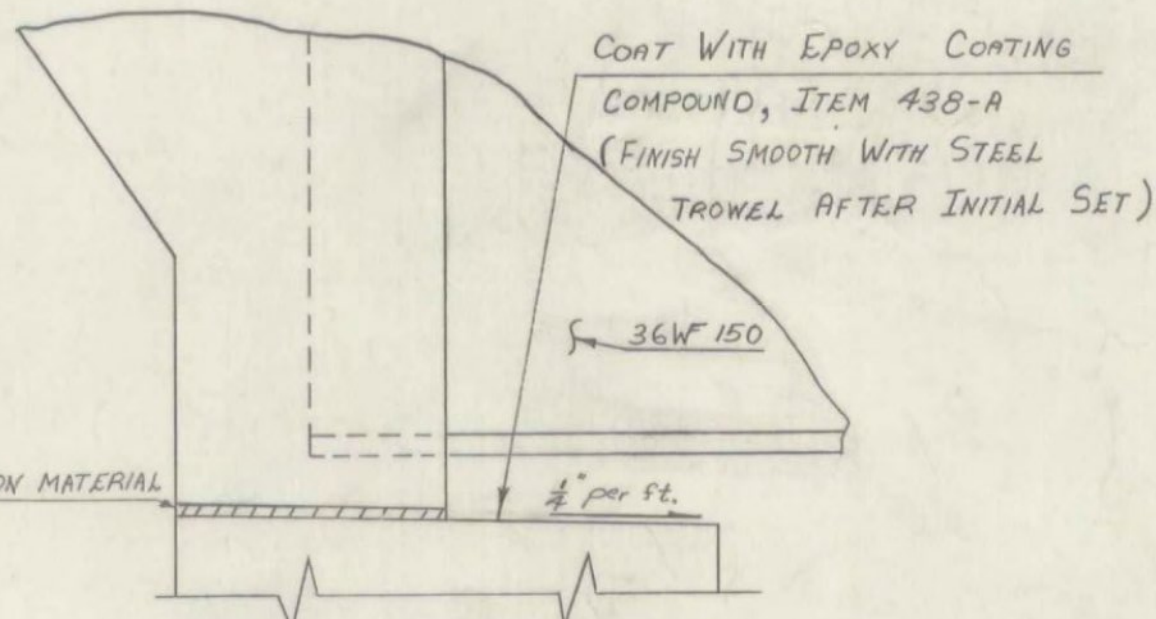
CURTAIN WALL DETAILS (SECTION B-B)
SCALE: 1 1/2\"/>



PLAN
SCALE: 1\"/>



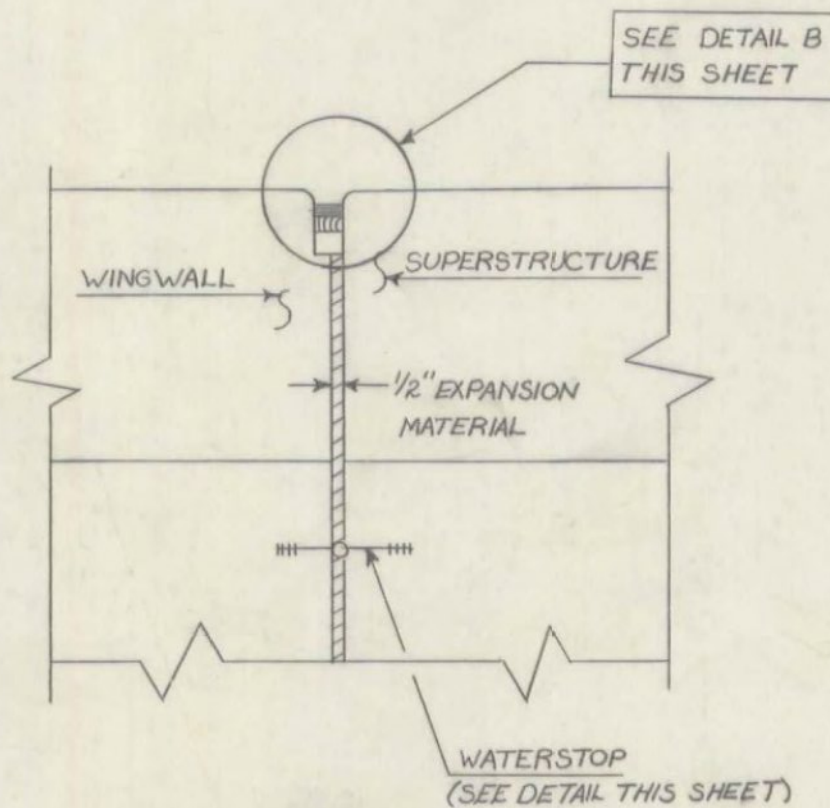
SECTION A-A
SCALE: 1\"/>



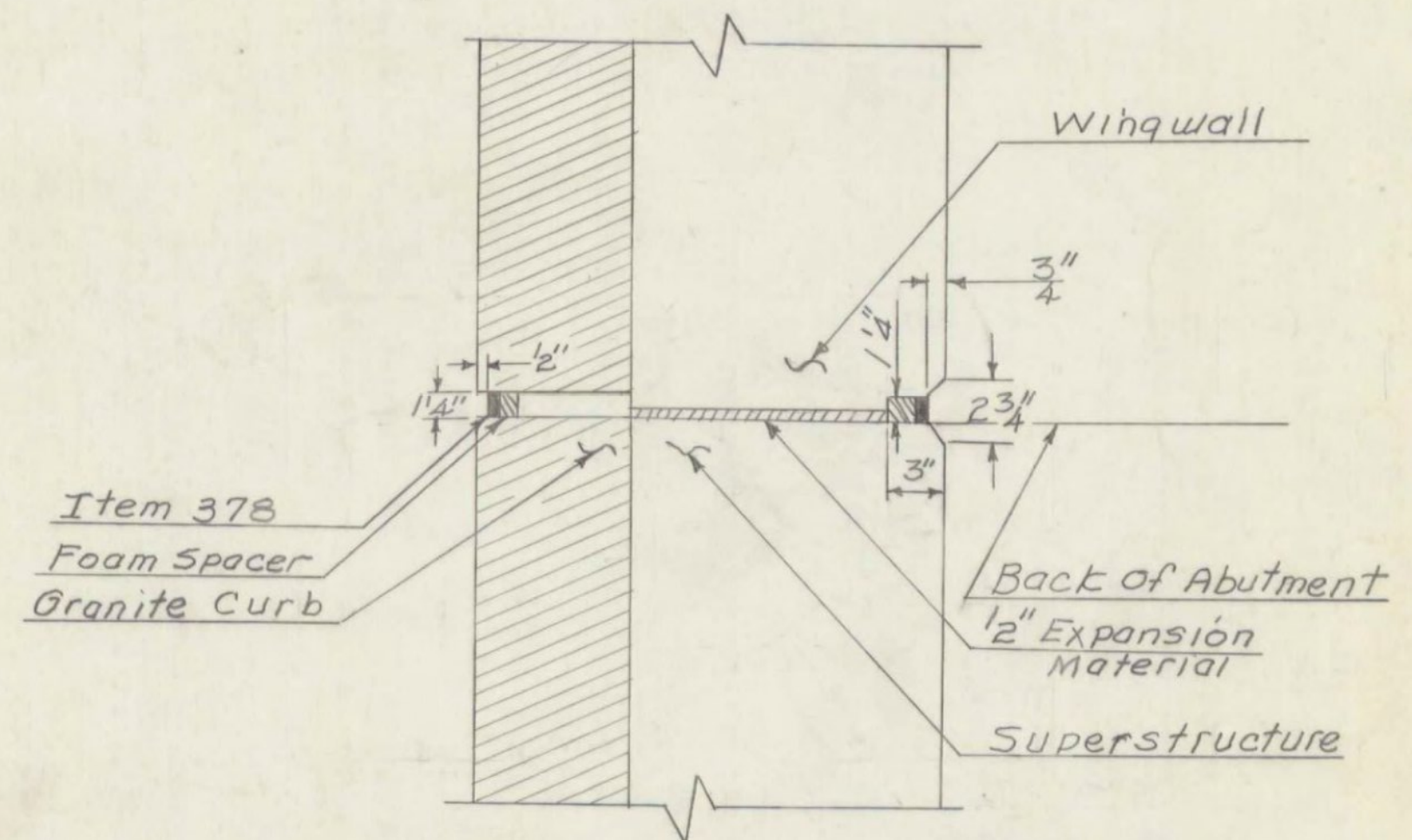
-DETAIL OF BRIDGE SEAT TREATMENT -
FIXED ABUTMENTS

(REFER TO NOTE 14 ON STD. SH. SCB-DI-67 FOR SPECIFICATIONS REGARDING SLOPING OF BRIDGE SEATS)

SCALE: 1 1/2\"/>



SECTION C-C
SCALE: 1 1/2\"/>

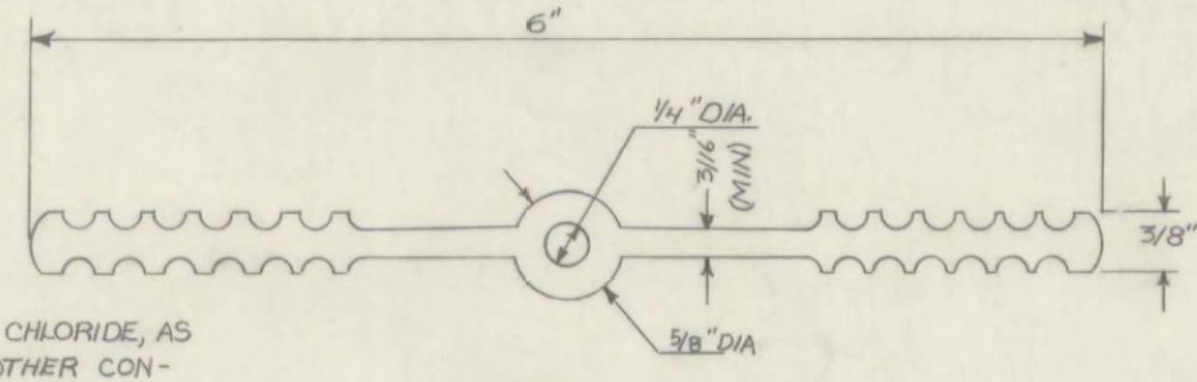


SECTION D-D
SCALE: 1 1/2\"/>

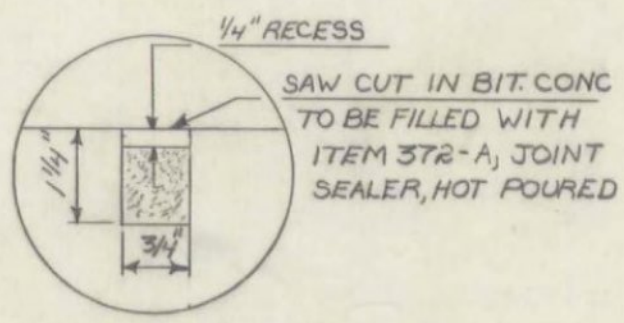
LYNDON-IRASBURG
IM MEMB(29)
SHEET 36 OF 55
BRIDGE NO. 102S
FOR REFERENCE ONLY

NOTES

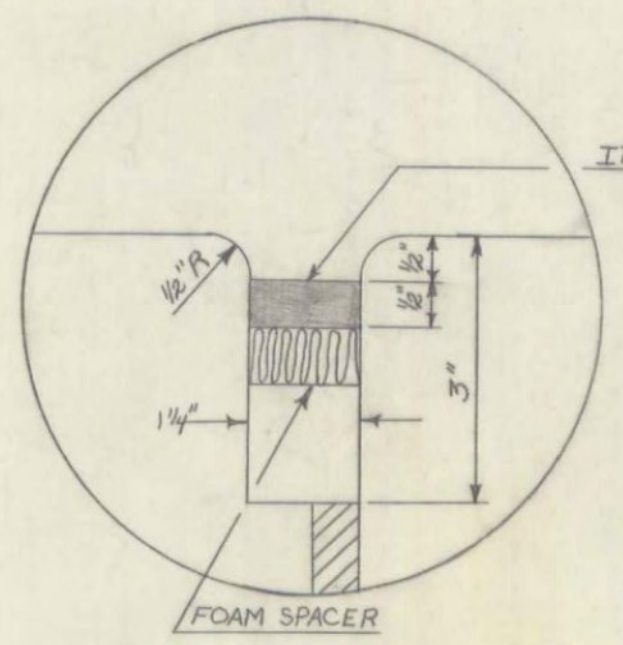
- MATERIAL TO BE POLYVINYL CHLORIDE, AS SPECIFIED IN ITEM 401.2.H. OTHER CONFIGURATIONS, WITH MINOR DIMENSION VARIATIONS, MAY BE USED WITH THE APPROVAL OF THE BRIDGE ENGINEER.
- COST OF THE WATERSTOP AND PAINT WATERPROOFING SHALL BE INCLUDED IN THE UNIT PRICE BID FOR ITEM 401, CONCRETE CLASS A-A, MOD. THE PAINT WATERPROOFING SHALL CONFORM TO THE SPECIFICATIONS FOR ITEM 410.
- THE CONTRACTOR SHALL PROVIDE ADEQUATE SUPPORT TO MAINTAIN ALIGNMENT OF WATERSTOP DURING CONSTRUCTION.



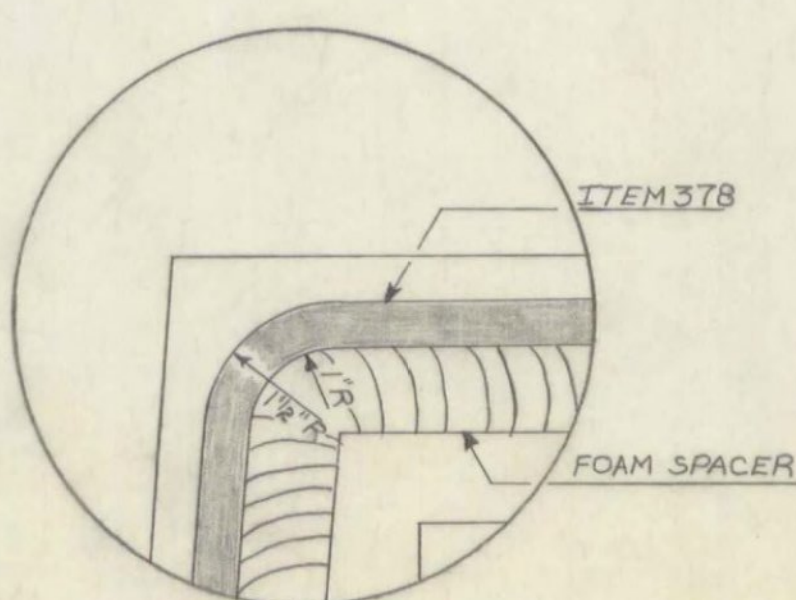
WATERSTOP DETAIL
SCALE: 1\"/>



DETAIL A
SCALE: N.T.S.



DETAIL B
SCALE: 1\"/>



DETAIL C
SCALE: 1\"/>

Stage 1 Construction

STATE OF VERMONT	
DEPARTMENT OF HIGHWAYS	
PROJECT: BARTON TOWN OF BARTON	BR 102
ROUTE No. 191	# STATION 214B±97
INTERSTATE 91 OVER VT 16	
FIXED END DETAILS	
SCALE AS SHOWN	
SECTION SUPERVISOR: F. W. Balkum - 4/70	
DRAWN BY: HOSKING - CHECKED BY: QUELLETTE 4/70	
PROJECT No. 191-3(11)	
SHEET 119 OF 670 BR 102	