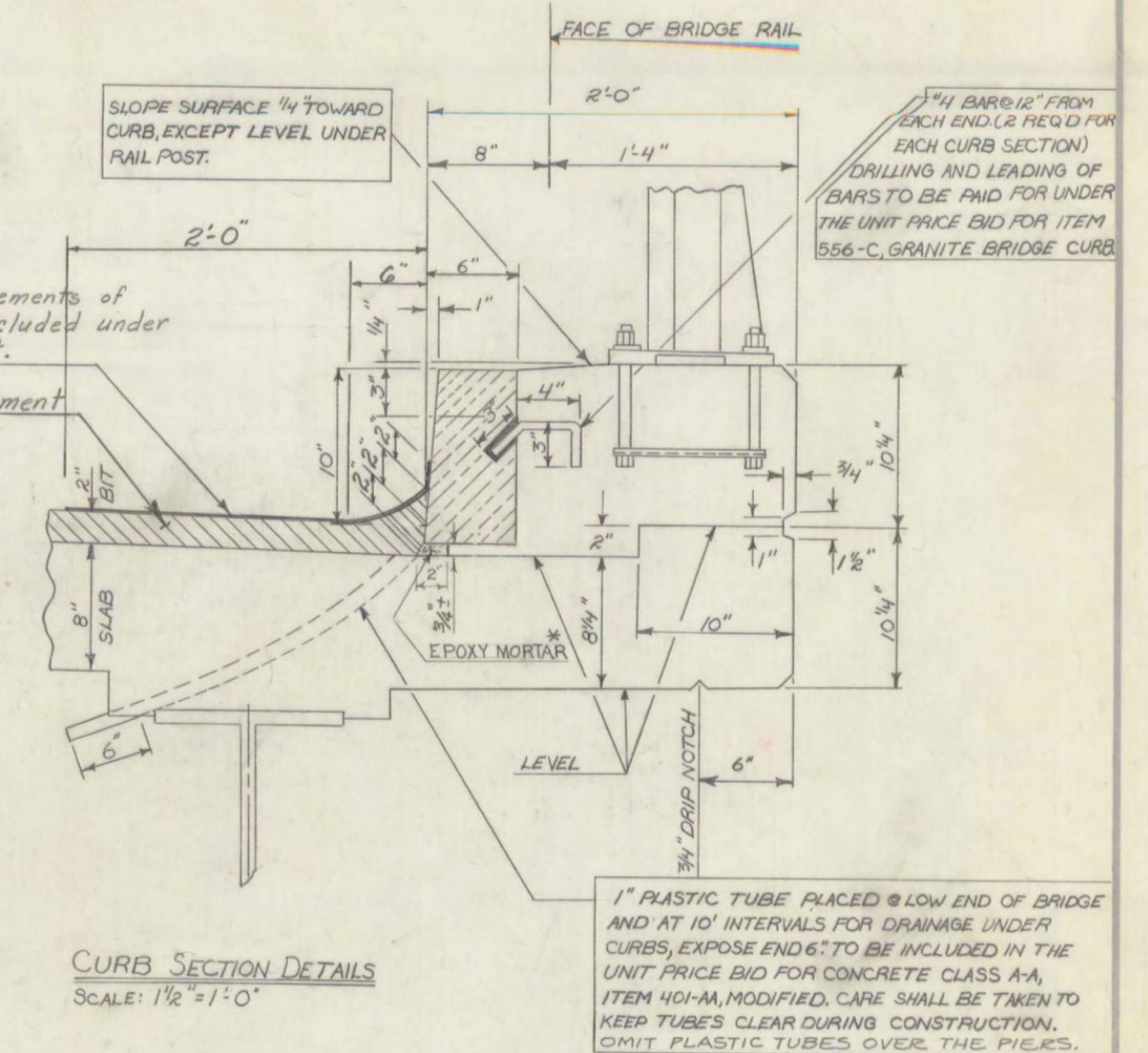
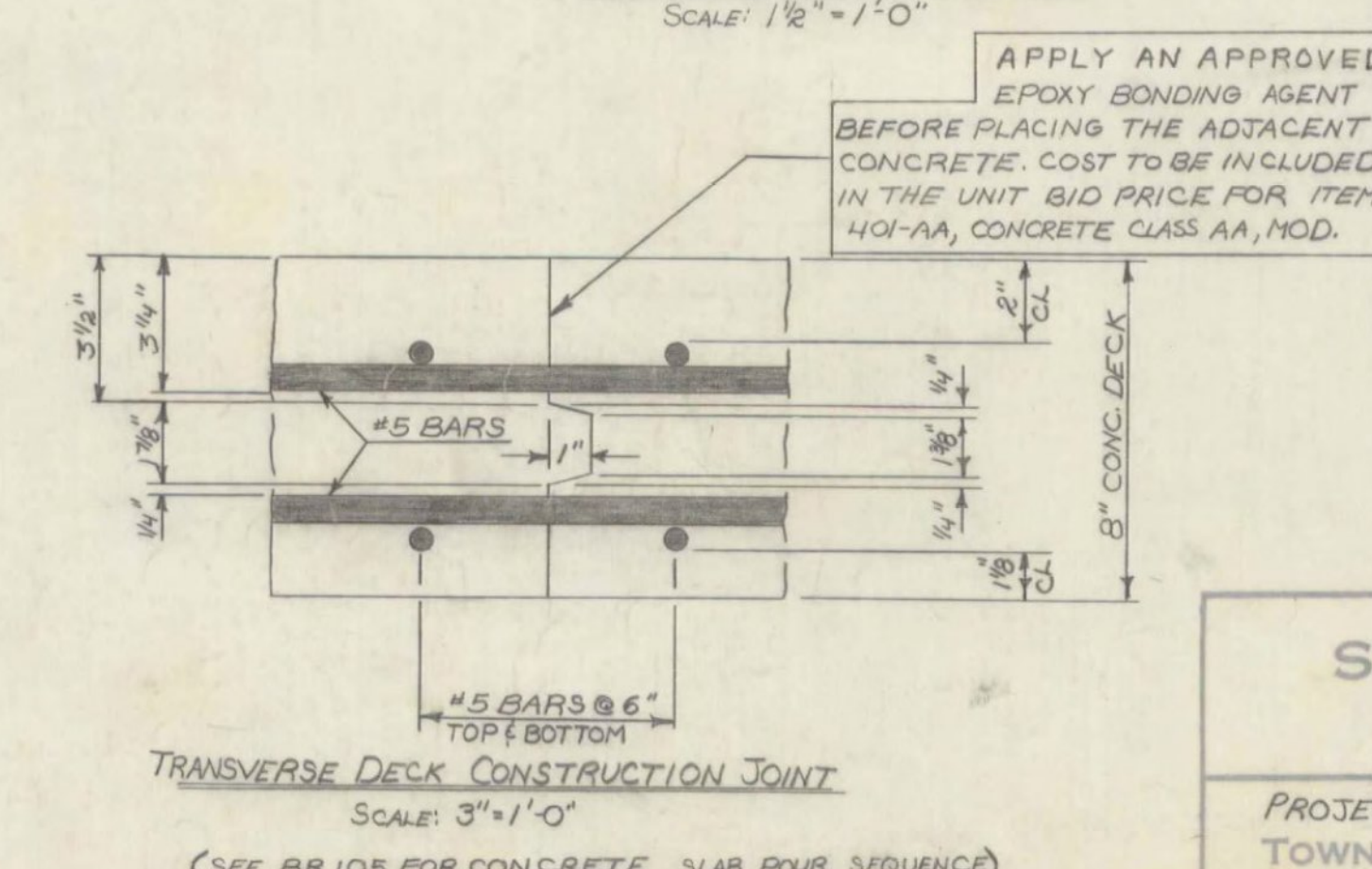
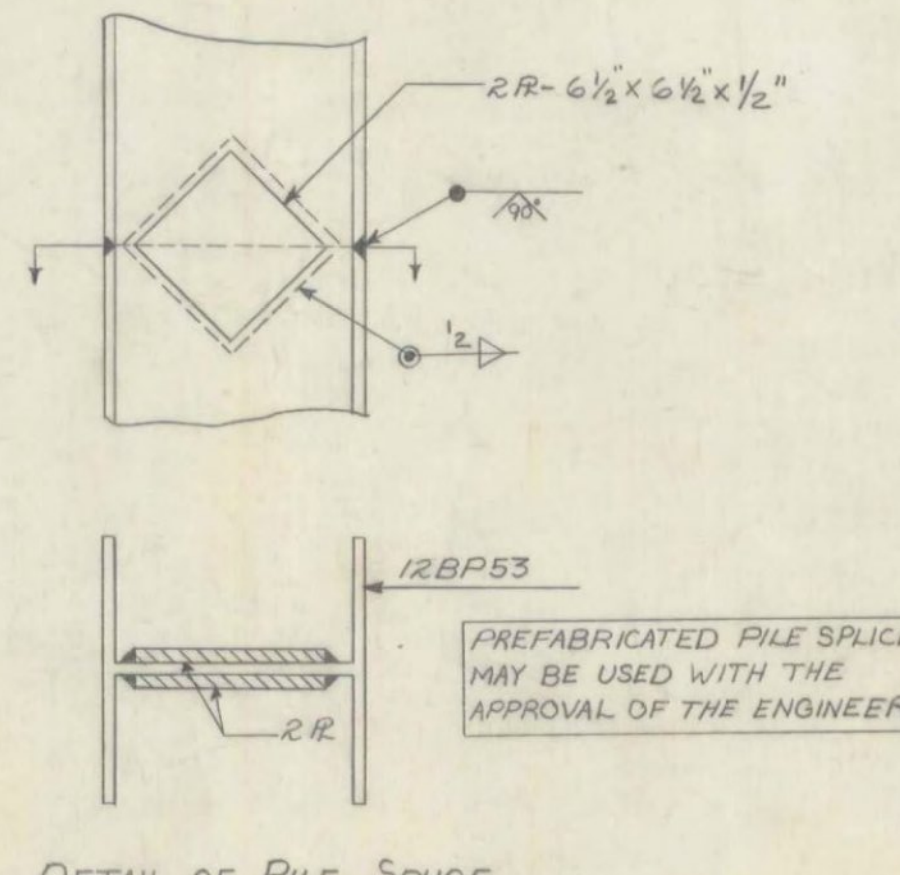
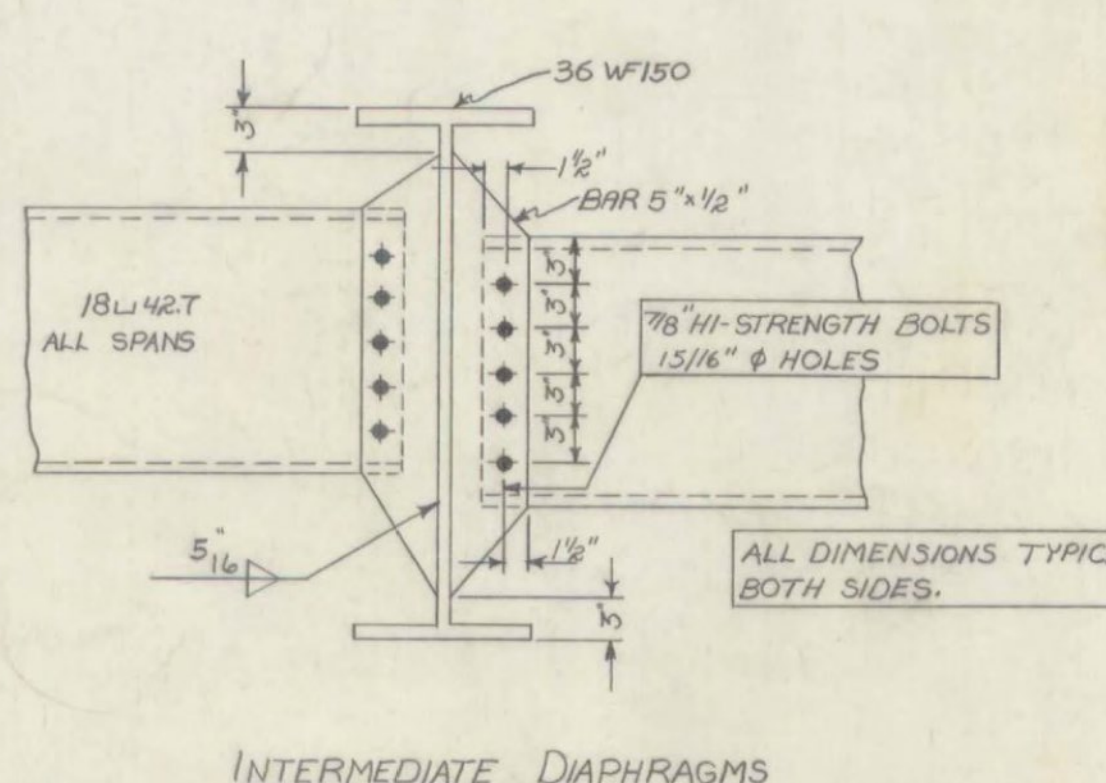
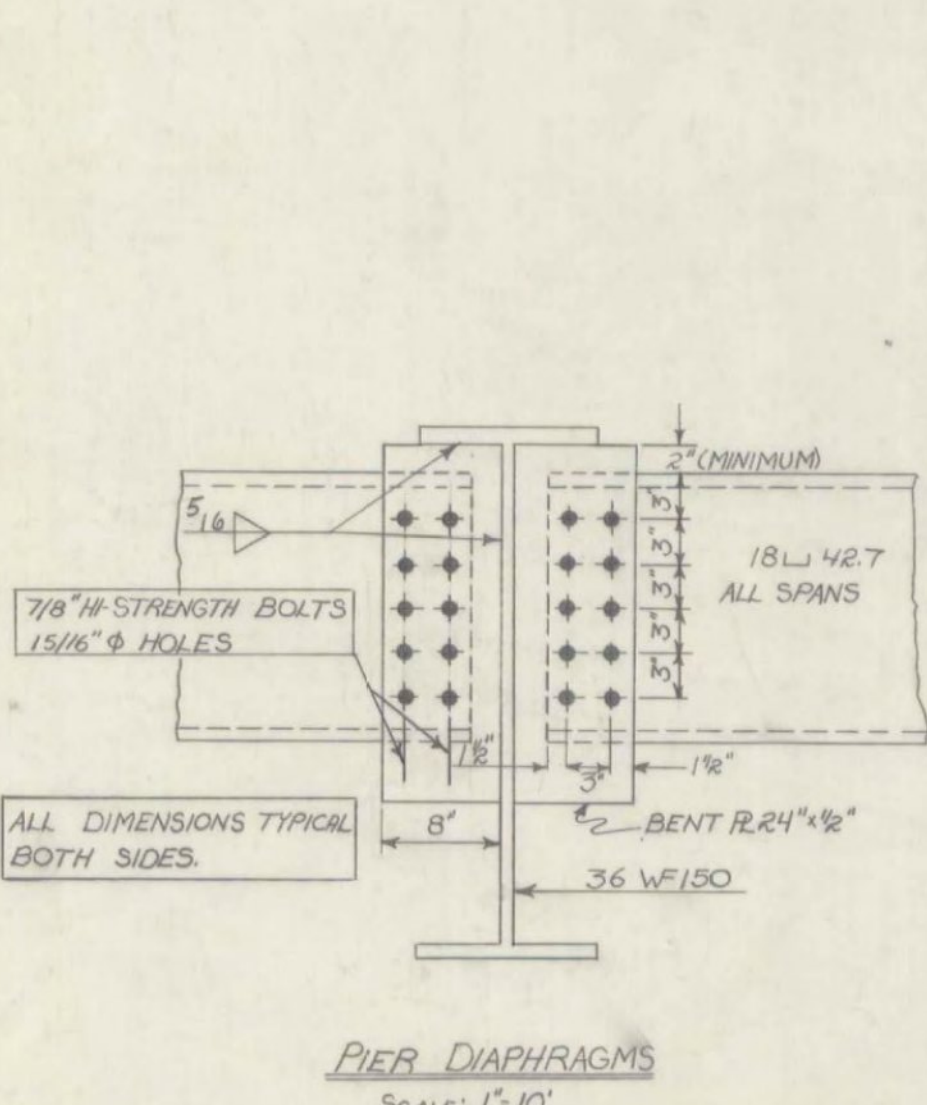
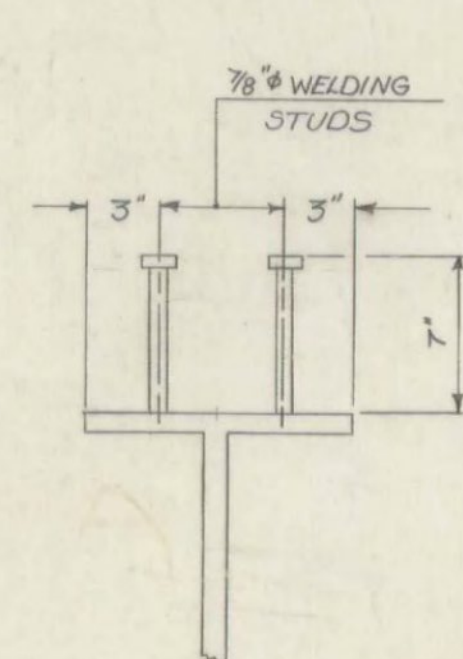
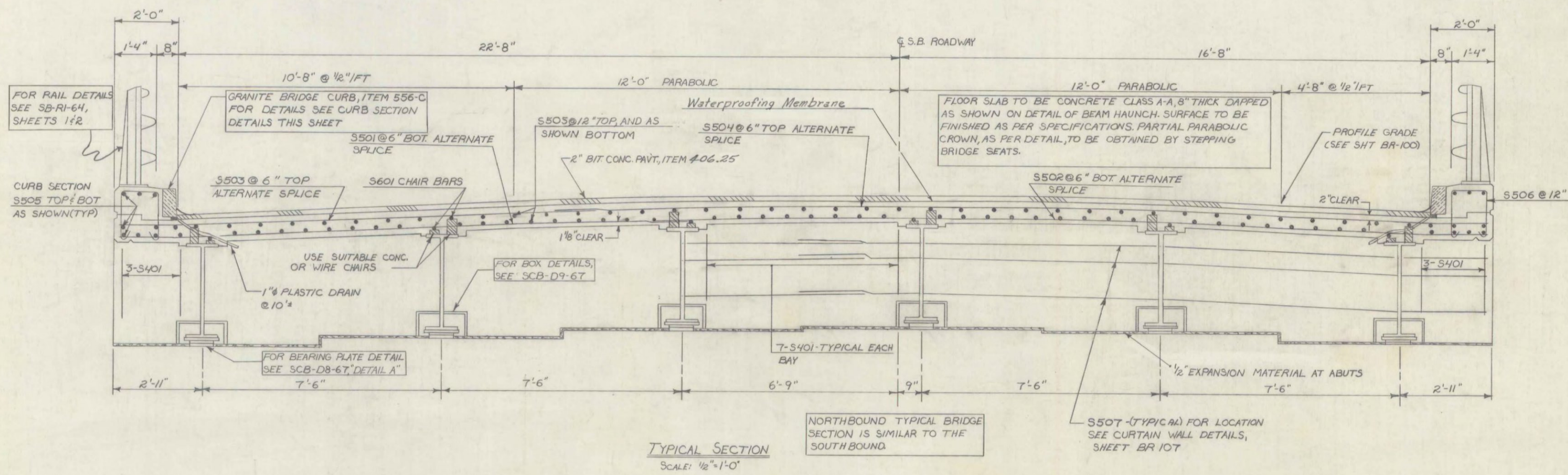


Tar Emulsion, meeting requirements of Item 702.05. Cost to be included under Item 406.25, Bit. Conc. Pav't.

Item 406.25 Bituminous Concrete Pavement



* REFER TO SPECIAL PROVISIONS UNDER ITEM 556-C.02 MATERIALS SUBARTICLE B - MORTAR.



LYNDON-IRASBURG
IM MEMB(29)
SHEET 35 OF 55
BRIDGE NO. 1025
FOR REFERENCE ONLY

STATE OF VERMONT
DEPARTMENT OF HIGHWAYS

PROJECT: BARTON TOWN OF BARTON **BR102**

ROUTE No. I 91 STATION 248+97

INTERSTATE 91 OVER VT-16

SUPERSTRUCTURE DETAILS

SCALE AS SHOWN

SECTION SUPERVISOR: F.W. Balkum - 9/70

DRAWN BY HOSKING CHECKED BY OUELLETTE 3/70

PROJECT No. I 91-3 (18)

SHEET 118 OF 120 BR106

Stage 2 Construction

Stage 1 Construction