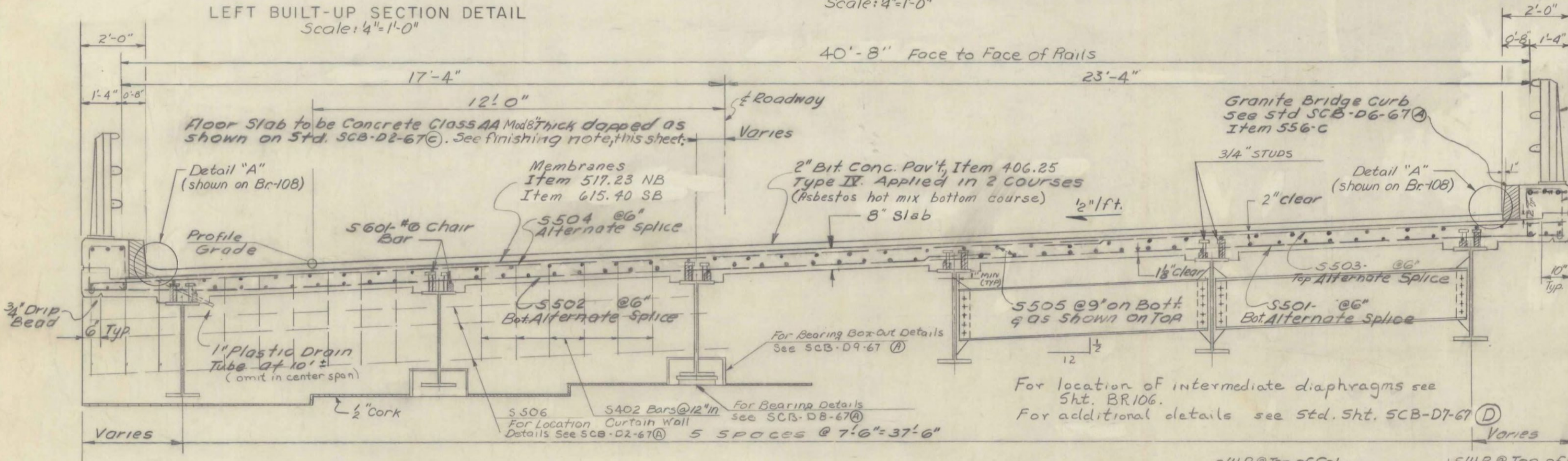
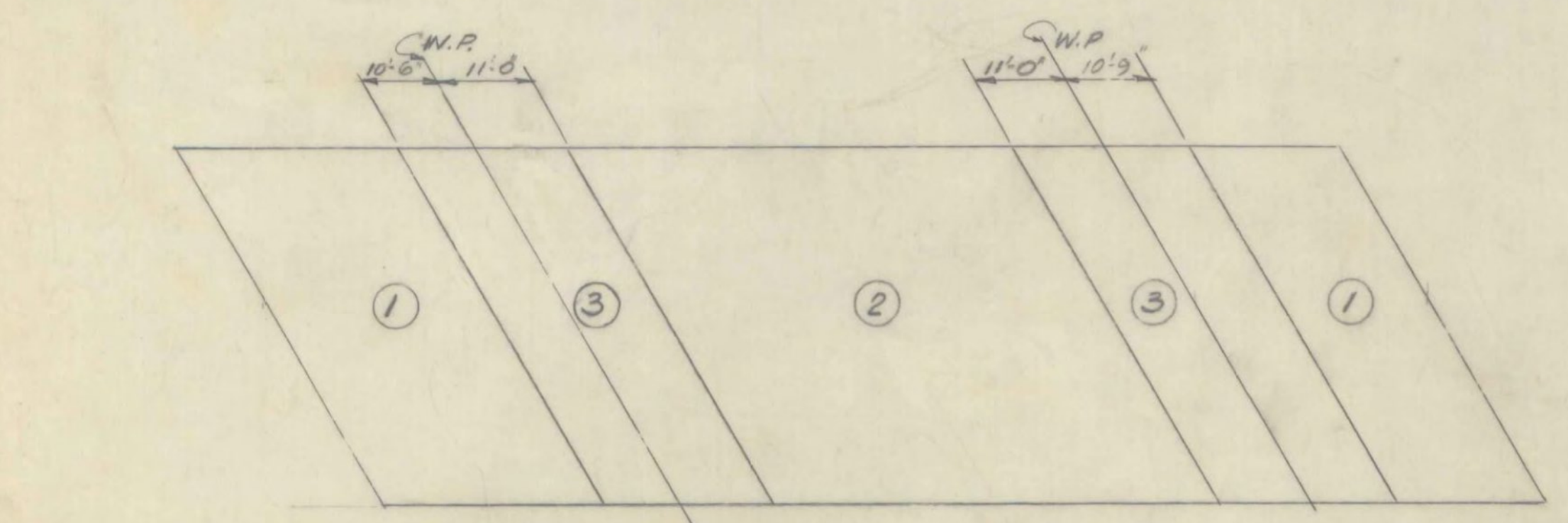


\* Plates indicated thus shall be used on both sides of Interior Frames & on the inside of the Fascia Frames only.

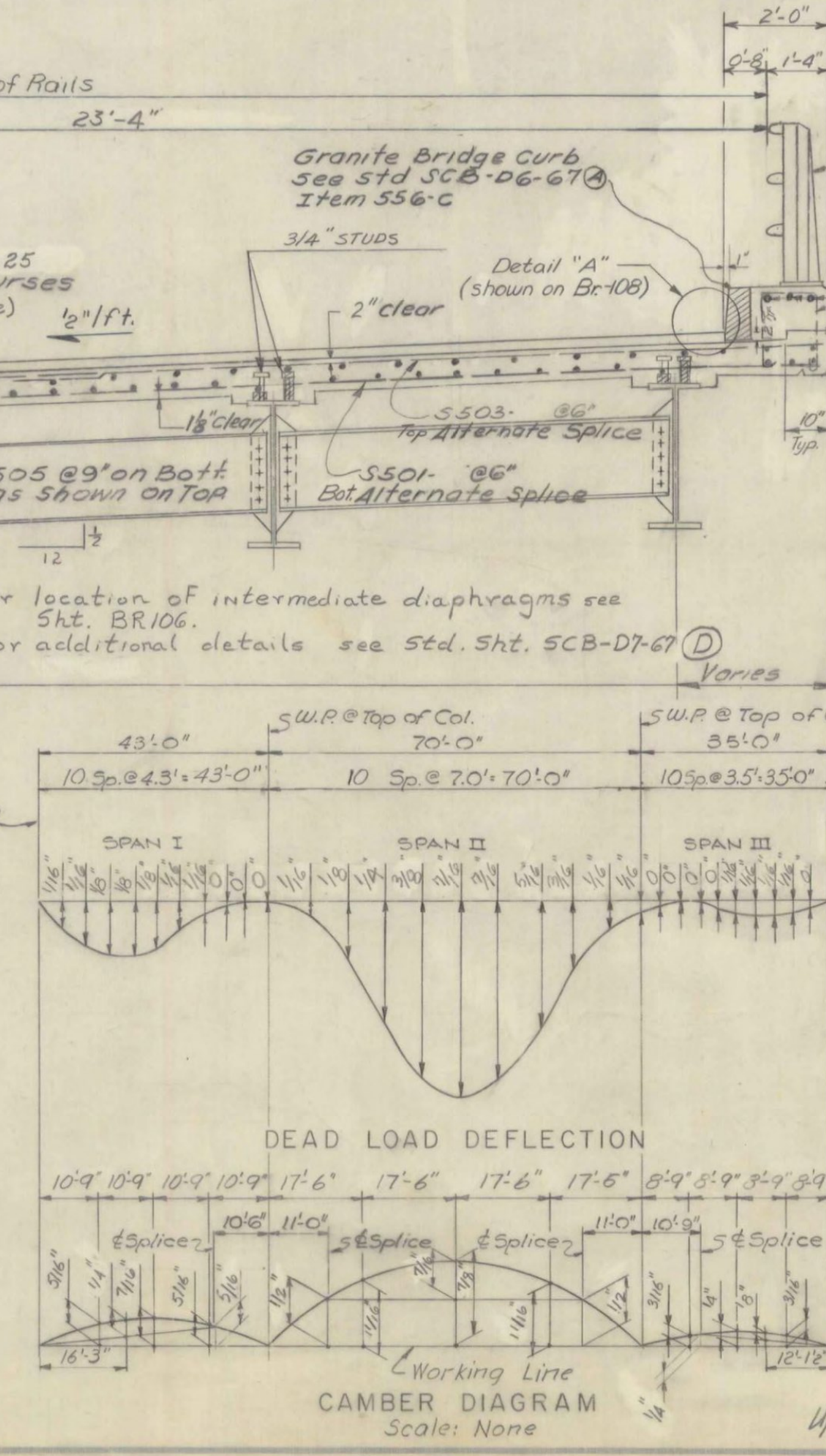
R = Radial Stiffener  
 Δ = Triangular R, see Detail  
 \*\* Plates indicated thus shall be triangular on outside face of Fascia Frames and rectangular 6" x 1/2" on both sides of Interior Frames & inside face of Fascia Frames  
 Stiffener and Connection plates shall be cut from web plate waste material



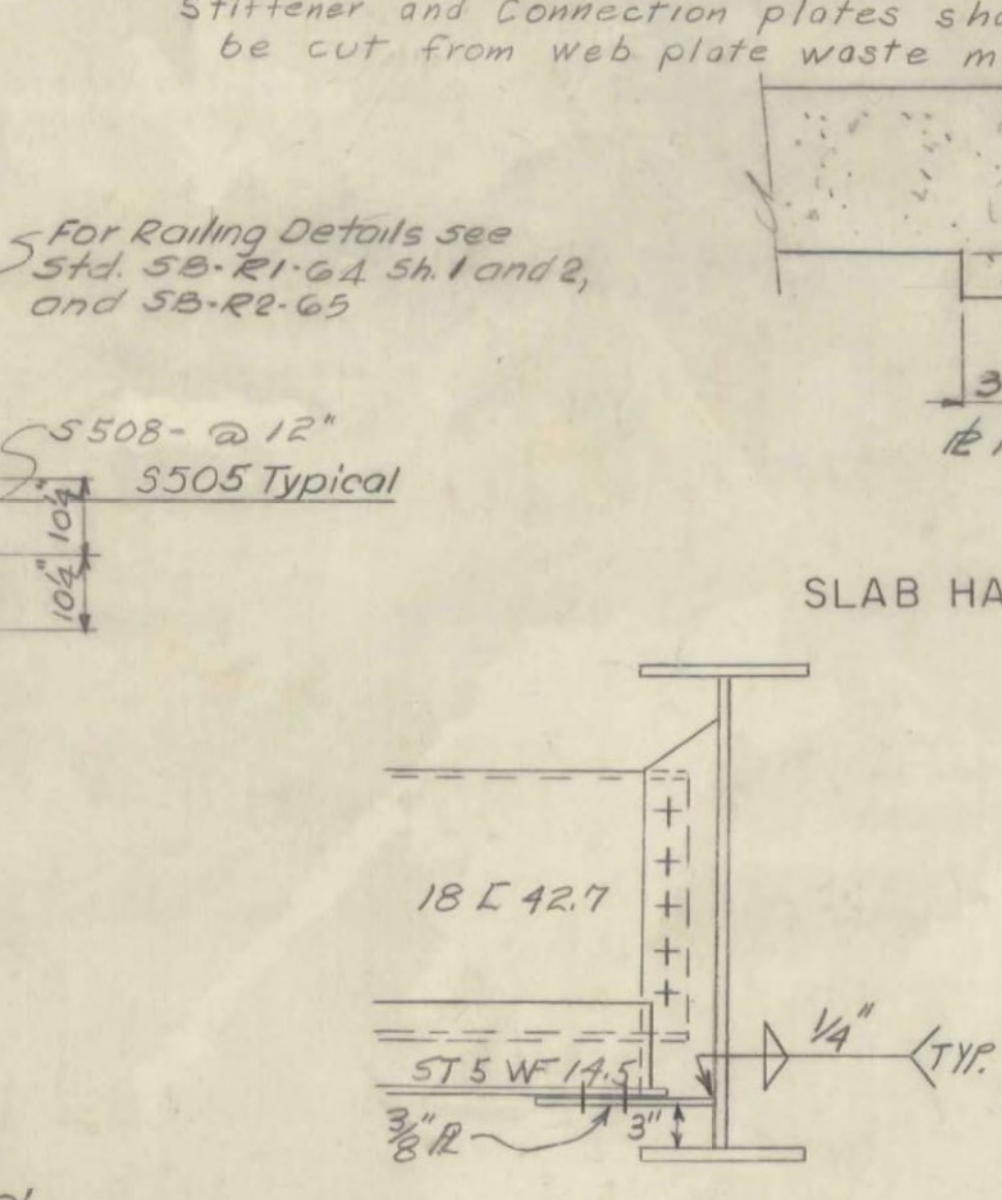
TYPICAL SECTION  
 NORTHBOUND SHOWN - SOUTHBOUND SIMILAR  
 Scale: 2"=1'-0"



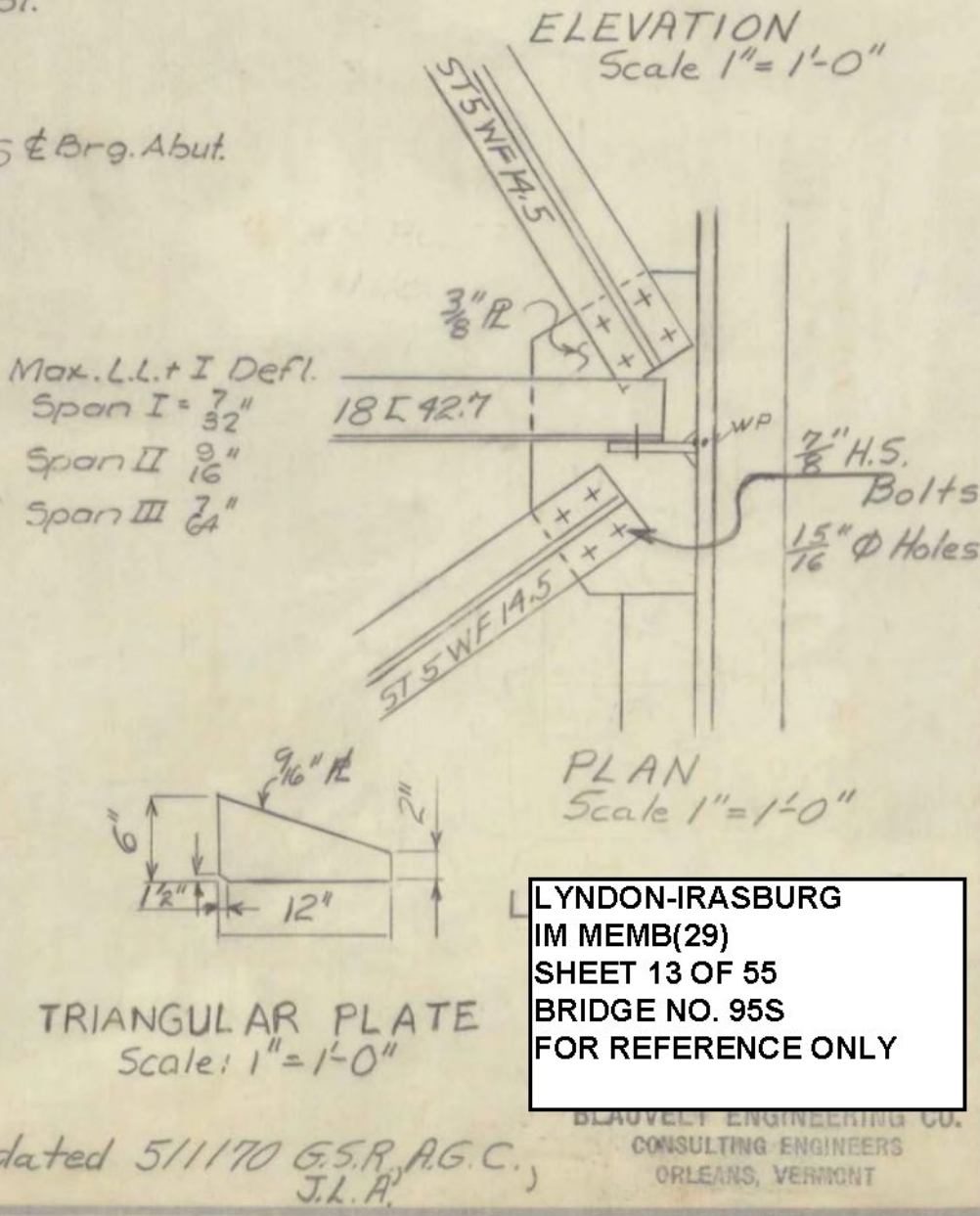
Retarding Admixture for Concrete, Item 408, may be used when called for by the Engineer. The pour sequence shall be followed.



DEAD LOAD DEFLECTION  
 CAMBER DIAGRAM  
 Scale: None



SLAB HAUNCH DETAIL AT COLUMN  
 Scale: 1/2"=1'-0"



ELEVATION  
 TRIANGULAR PLATE  
 Scale: 1"=1'-0"

Notes:  
 For General Notes, see Std Sheet SCB-D167.  
 Anchor bolts shall be grouted and tightened at the abutments immediately after the steel is erected or a temporary support shall be provided to resist transverse loads.  
 For Details of Stud Shear Connectors, see Std Sheet SCB-D2-67 (B).  
 For Framing Plan, see Sheet BR106.

Stage 2 Construction  
 Finishing Note:  
 The floor slab surface shall be finished with a self-propelled concrete finishing machine in accordance with the modifications in Article 401.05, Sub-article I.

CONTRACT 1  
 STAGE 1 CONSTRUCTION

STATE OF VERMONT  
 DEPARTMENT OF HIGHWAYS

PROJECT LYNDON-BARTON  
 TOWN OF LYNDON

ROUTE No. 1-91 LOG STA. 1227  
 STATE AID # 9  
 1-91 OVER TOWN ROAD # 34

TYPICAL SECTION & DETAILS

SCALE AS SHOWN

IN CHARGE H.C. MARGOLIS

DRAWN BY DP CHECKED BY MS. JTC

PROJECT No. 1-91-310 (10)

SHEET 152 OF BR-107

LYNDON-IRASBURG  
 IM MEMB(29)  
 SHEET 13 OF 55  
 BRIDGE NO. 955  
 FOR REFERENCE ONLY

Updated 5/11/70 G.S.R. A.G.C.  
 J.L.H.